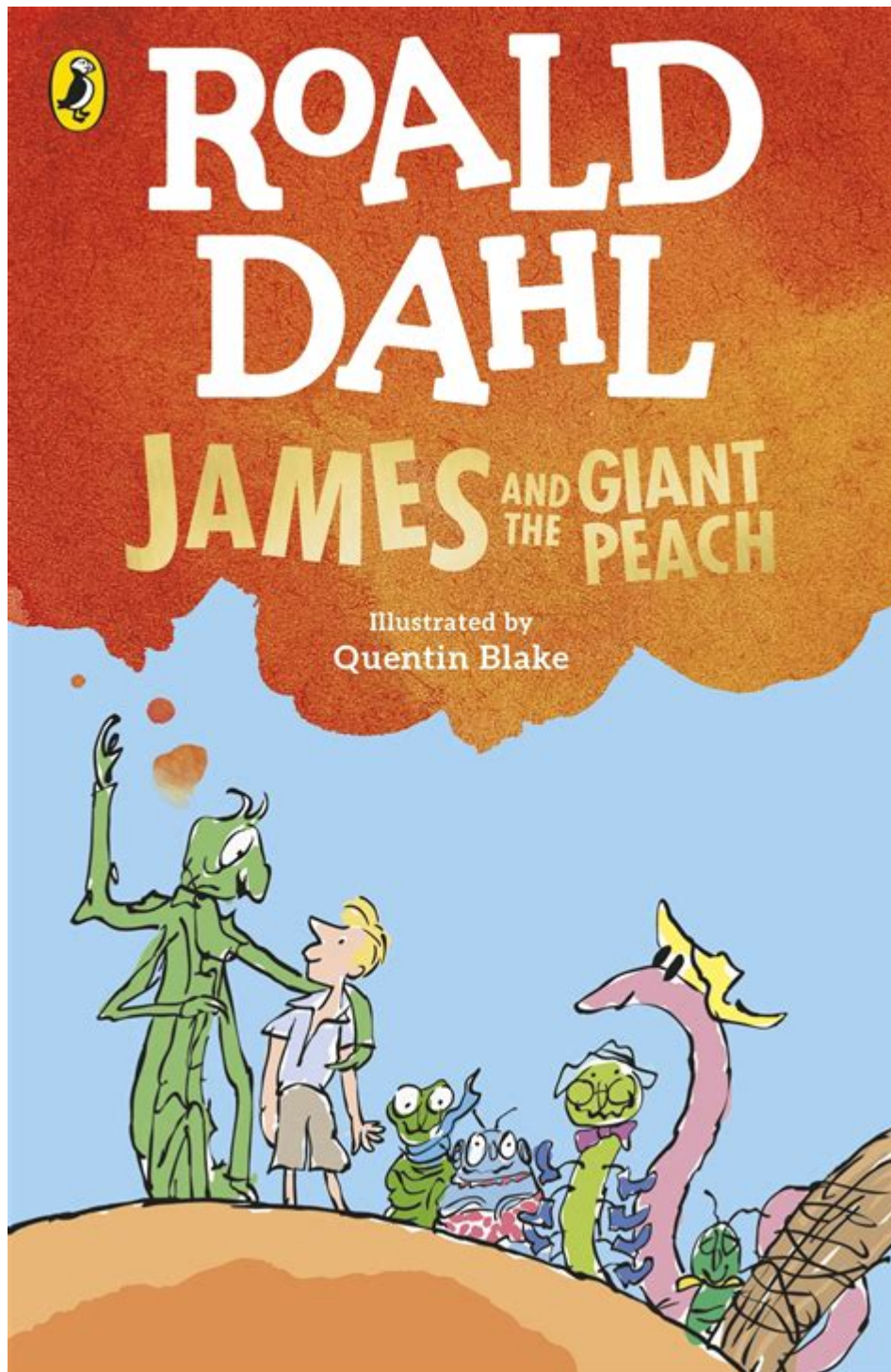


James And The Giant Peach Pages



James and the Giant Peach pages is a beloved children's novel written by Roald Dahl, first published in 1961. This enchanting story follows a young boy named James Henry Trotter who, after a series of unfortunate events, finds himself embarking on an extraordinary adventure inside a giant peach. The pages of this whimsical tale are filled with vivid imagery, imaginative characters, and valuable life lessons. In this article, we will delve into the narrative, themes, and characters of James and the Giant Peach, as well as its impact on literature and popular culture.

Overview of the Story

The plot of *James and the Giant Peach* centers around a young boy named James who lives a miserable life with his cruel aunts, Spiker and Sponge. After a tragic accident leads to the loss of his parents, James is forced to live with his selfish guardians, who make his life a living nightmare. However, everything changes when James encounters a magical bag of green crystals that transforms his life forever.

The Magical Transformation

When James drops the crystals near a barren peach tree, an enormous peach begins to grow. This peach eventually becomes large enough for James to enter. Inside, he meets a group of anthropomorphic insects, each with unique personalities and quirks. These characters include:

1. Grasshopper - The wise and musical leader of the group.
2. Ladybug - A nurturing figure who serves as a motherly presence for James.
3. Earthworm - A pessimistic yet lovable character who often fears danger.
4. Centipede - A brash and adventurous creature with a penchant for mischief.
5. Spider - A gentle soul who provides comfort and wisdom.

Together, they embark on a thrilling journey across the ocean in the giant peach, encountering both perilous challenges and moments of joy. The peach serves as a vessel for their adventure, and it becomes a symbol of hope and friendship.

Thematic Elements

James and the Giant Peach is rich with themes that resonate with readers of all ages. Below are some of the key thematic elements explored in the story:

Overcoming Adversity

James's journey is one of triumph over adversity. From his early life with his cruel aunts to his adventures with the friendly insects, James learns to confront his fears and embrace his individuality. His character development highlights the importance of resilience in the face of challenges.

The Power of Friendship

The friendships formed inside the peach are central to the narrative. Each

insect possesses unique qualities that contribute to the group's success. The bond between James and his new friends exemplifies how relationships can provide support and strength during difficult times.

Imagination and Adventure

Dahl's use of fantastical elements invites readers to explore the power of imagination. The giant peach itself serves as a metaphor for the boundless possibilities that come from creativity and adventure. The story encourages readers to dream big and embrace their unique journeys.

Character Analysis

The characters in *James and the Giant Peach* are vibrant and memorable, each contributing to the overall narrative in significant ways. Here's a closer look at some of the key characters:

James Henry Trotter

James is the protagonist of the story. Initially portrayed as a timid and downtrodden boy, he evolves into a courageous leader throughout the narrative. His willingness to embrace the unknown and form connections with his companions illustrates his growth and resilience.

Aunts Spiker and Sponge

James's aunts represent the antagonistic forces in his life. Their self-serving and cruel behavior serves as a stark contrast to the kindness he finds in his friends within the peach. They symbolize the oppressive realities that children can face, making James's eventual escape all the more poignant.

The Insects

Each insect character brings a distinct personality to the story:

- Grasshopper: Symbolizes wisdom and musicality, guiding the group through challenges.
- Ladybug: Represents nurturing and care, often providing emotional support to James.
- Earthworm: Embodies skepticism but also adds humor, highlighting the

importance of perspective.

- Centipede: Adds a sense of adventure and risk-taking, encouraging James to embrace his journey.
- Spider: Acts as a voice of reason and comfort, showing the importance of compassion.

Artistic Illustrations

The illustrations accompanying the text of *James and the Giant Peach* further enhance the reading experience. Originally illustrated by Nancy Ekholm Burkert, the artwork captures the whimsical nature of Dahl's writing. The illustrations bring the characters and scenes to life, helping young readers visualize the adventure.

Impact of Illustrations

1. Engagement: The colorful and imaginative illustrations keep young readers engaged and entertained.
2. Visualization: Illustrations aid in understanding character dynamics and the fantastical elements of the story.
3. Emotional Connection: Through visual representation, readers can form a deeper emotional connection with the characters and their journeys.

Literary Significance

James and the Giant Peach has secured its place as a classic in children's literature. Dahl's ability to blend fantasy with relatable themes has influenced generations of readers. The book's unique narrative style, characterized by playful language and dark humor, sets it apart from other children's stories.

Influence on Other Works

Dahl's storytelling techniques in *James and the Giant Peach* have inspired numerous authors and creatives:

- Imaginative Storytelling: Many contemporary children's authors adopt Dahl's whimsical style and emphasis on imagination.
- Adaptations: The story has been adapted into various formats, including theater productions and animated films, expanding its reach and impact.

Conclusion

In summary, the pages of *James and the Giant Peach* offer a magical journey filled with adventure, friendship, and self-discovery. Roald Dahl's timeless tale continues to resonate with readers, encouraging them to embrace their uniqueness and face challenges with courage. Through its rich themes, memorable characters, and stunning illustrations, *James and the Giant Peach* remains a cherished classic that will continue to inspire future generations. Whether read as a bedtime story or studied in a classroom, the narrative serves as a reminder of the beauty of imagination and the power of friendship in overcoming life's obstacles.

Frequently Asked Questions

What is the significance of the giant peach in 'James and the Giant Peach'?

The giant peach symbolizes hope and adventure, serving as a vehicle for James to escape his troubled life and embark on a journey of self-discovery and friendship.

How do the characters in 'James and the Giant Peach' contribute to the story's themes?

The characters, such as the anthropomorphic insects, each represent different traits and backgrounds, emphasizing themes of acceptance, teamwork, and the importance of friendship in overcoming challenges.

What role does imagination play in 'James and the Giant Peach'?

Imagination is central to the story, as it allows James to transform his bleak reality into a fantastical adventure, highlighting the power of creativity in facing life's difficulties.

How does Roald Dahl use language and humor in 'James and the Giant Peach'?

Dahl employs playful language, puns, and whimsical descriptions to engage readers, creating a lighthearted tone that contrasts with the darker aspects of James's life.

What are some key lessons that can be learned from 'James and the Giant Peach'?

Key lessons include the importance of resilience in the face of adversity,

the value of friendship and community, and the idea that one's circumstances can change with courage and creativity.

How does the setting influence the events of 'James and the Giant Peach'?

The setting shifts from the grim environment of James's aunts' house to the vibrant and fantastical world inside the peach, reflecting James's emotional journey and the transformation of his life.

What elements of magical realism are present in 'James and the Giant Peach'?

Magical realism is evident through the talking insects, the giant peach, and the surreal adventures that blend the ordinary with the extraordinary, creating a whimsical narrative that captivates readers.

Find other PDF article:

<https://soc.up.edu.ph/51-grid/files?dataid=wZv62-4430&title=robin-lane-fox-the-classical-world.pdf>

[James And The Giant Peach Pages](#)

Connecticut firefighter killed by piece of fire truck

21 hours ago · A Connecticut firefighter was killed after a piece of a fire truck broke free and struck him, state police said.

Connecticut Firefighter Killed in Accident While Fighting a ...

22 hours ago · PLAINVILLE, Conn. (AP) — A Connecticut firefighter was killed after a piece of a fire truck broke free and struck him, state police said.

'May God bless him.' Plainville community grieves veteran firefighter ...

23 hours ago · Flags are at half-staff across the state to honor 60-year-old fallen Plainville firefighter Ray Moreau, who was killed in the line of duty Sunday, leaving his close-knit ...

Connecticut firefighter killed in accident while fighting a house fire

20 hours ago · A Connecticut firefighter was killed after a piece of a fire truck broke free and struck him, state police said. Raymond Moreau, 60, a 35-year veteran of the Plainville Fire ...

Connecticut officials share support for Plainville community after ...

1 day ago · PLAINVILLE, Conn. (WTNH) — After a firefighter was killed in the line of duty after a house fire on Sunday in Plainville, officials and departments across the state are offering ...

Equipment Caused Injuries that Claimed Plainville, CT, Firefighter ...

1 day ago · Raymond "Ray" Alan Moreau, a 35-year member of the Plainville Fire Department, was struck by equipment at a house fire Sunday morning. Plainville Firefighter Raymond ...

Medical Examiner Releases Cause Of Death For CT Firefighter Killed ...

16 hours ago · Medical Examiner Releases Cause Of Death For CT Firefighter Killed In Line Of Duty
The Office of the Chief Medical Examiner has released its findings regarding the death of ...

Connecticut firefighter dies at scene of house fire | AP News

22 hours ago · A Connecticut firefighter has died after being struck by a piece of a fire truck that broke free. State police say Plainville firefighter Raymond Moreau suffered severe leg injuries ...

Plainville firefighter dies after being struck by piece of fire truck ...

1 day ago · Conn. firefighter dies after being struck by piece of fire apparatus at house fire Raymond Moreau, a 35-year volunteer with the Plainville Fire Department, was struck outside ...

Autopsy shows cause of death for firefighter in Plainville house fire

18 hours ago · Fallen Plainville firefighter Raymond Moreau died of blunt force trauma he suffered at the scene of a house fire Sunday, state officials said.

Tägliches Quiz beim SPIEGEL: 7 Fragen zum Allgemeinwissen ...

1 day ago · Testen Sie hier Ihr Wissen! Im täglichen Quiz geht es darum, Ihr Wissen zu den wichtigsten ...

MSPU Tips: Test Your Knowledge With Bing's Weekl...

3 days ago · Check out this easy guide to see how to take part in Bing's weekly news quiz. Have fun, learn, and test your knowledge of recent events!

The Bing Quiz | Take the Quiz | QuizMaker

Whether you're a fan of animated series, video games, or movies, there's something for everyone in this quiz! Learn about Bing's favorite color, ...

How to play the Bing Trends Quiz? - Trybotics

Start the Bing quiz by clicking on the banner that says 'Trends Quiz' on the Bing homepage. You will be asked a series of questions about the most ...

Bing Homepage Quiz: Play Daily and Test Your Knowledge

Launched in 2016, this daily online quiz by Bing has inspired millions to explore the world, one question at a time. Whether you're into history, science, ...

Explore the enchanting world of "James and the Giant Peach" pages! Dive into summaries

[Back to Home](#)