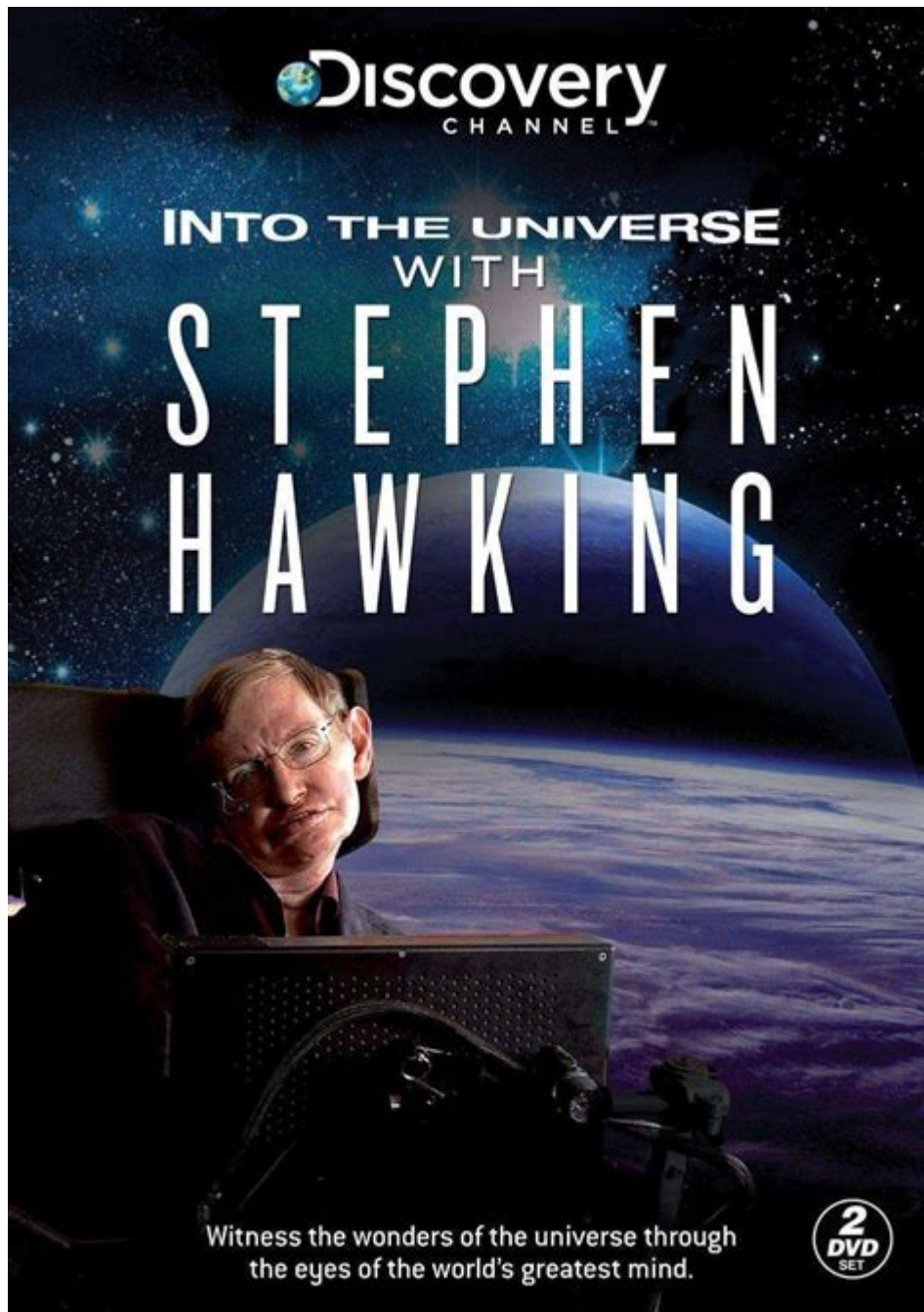


Into The Universe With Stephen Hawking



Into the Universe with Stephen Hawking is a captivating documentary series that takes viewers on an extraordinary journey through the cosmos, guided by one of the greatest scientific minds of our time. Stephen Hawking, renowned for his groundbreaking work in theoretical physics, particularly in the fields of black holes and cosmology, presents complex concepts in an accessible manner, inviting audiences to explore the wonders of the universe. This series not only highlights his scientific contributions but also embodies his philosophy of curiosity and the quest for knowledge.

Overview of the Series

“Into the Universe with Stephen Hawking” premiered on the Discovery Channel in 2010 and consists of three episodes, each delving into different aspects of the universe. The series is notable for its stunning visual effects, blending real scientific principles with imaginative storytelling, and it aims to inspire awe and wonder about the cosmos.

Episode Breakdown

The series is divided into three main episodes:

1. The Story of Everything - This episode explores the beginnings of the universe, discussing the Big Bang theory and the formation of galaxies, stars, and planets. It examines how the universe has evolved over billions of years and the fundamental forces that govern its behavior.
2. Aliens - In this episode, Hawking engages with the intriguing question of extraterrestrial life. He discusses the conditions necessary for life to exist and the implications of potentially discovering intelligent life elsewhere in the universe. This episode raises philosophical questions about humanity's place in the cosmos.
3. The Future of Humanity - The final episode addresses what the future may hold for humanity in the context of the universe. Hawking explores topics such as space travel, the potential for colonization of other planets, and the long-term survival of the human race. He emphasizes the importance of scientific advancement and international cooperation in facing potential global challenges.

Stephen Hawking: A Brief Biography

To fully appreciate the insights presented in “Into the Universe with Stephen Hawking,” it is essential to understand the life and legacy of Stephen Hawking himself.

Early Life and Education

- Born on January 8, 1942, in Oxford, England, Hawking exhibited a passion for science from a young age.
- He attended University College, Oxford, where he earned a degree in physics.
- After completing his undergraduate studies, he moved to the University of Cambridge to pursue a Ph.D. in cosmology.

Major Contributions to Science

Stephen Hawking is best known for several key contributions to theoretical physics:

1. Black Hole Theory - Hawking proposed that black holes are not entirely black; they emit radiation, now known as Hawking radiation, due to quantum effects near the event horizon.
2. Singularity Theorems - Alongside mathematician Roger Penrose, Hawking formulated the singularity theorems, which describe the conditions under which singularities occur in the universe, particularly in the context of the Big Bang and black holes.
3. Popular Science Communication - Hawking authored several popular science books, including the best-selling "A Brief History of Time," which has inspired millions to explore the mysteries of the universe.

Thematic Exploration in the Series

"Into the Universe with Stephen Hawking" not only presents scientific facts but also engages with deeper themes that resonate with viewers.

The Nature of Existence

One of the central themes of the series is the exploration of existence itself. Hawking poses profound questions:

- What is the universe made of?
- How did it come into being?
- What is the fate of the universe?

His explanations encourage viewers to ponder their own existence and the nature of reality.

The Quest for Knowledge

Hawking's relentless curiosity serves as a powerful message throughout the series. He advocates for the importance of asking questions and seeking answers, regardless of how complex or daunting they may seem. This theme is particularly relevant in an era where misinformation can spread rapidly.

Humanity's Place in the Universe

The series delves into humanity's role within the vast expanse of the cosmos. Hawking discusses the possibility of extraterrestrial life, emphasizing that the universe is unimaginably large, and the existence of other intelligent beings cannot be dismissed. This exploration challenges viewers to consider their responsibilities as inhabitants of Earth and the potential implications of contact with other civilizations.

Visual and Technical Aspects

The production quality of “Into the Universe with Stephen Hawking” is exceptional. The series employs cutting-edge visual effects to depict cosmic phenomena that are often difficult to visualize.

Animation and CGI

- The use of computer-generated imagery (CGI) allows viewers to experience events such as the Big Bang and the formation of black holes in a visually engaging manner.
- Animations help illustrate complex scientific concepts, making them more comprehensible to a general audience.

Expert Interviews and Narration

In addition to Hawking’s narration, the series features interviews with leading scientists and astronomers who provide further insights into the topics discussed. This blend of personal narrative and expert commentary enriches the viewer's understanding of the subject matter.

Impact on Popular Culture and Science Communication

“Into the Universe with Stephen Hawking” has had a significant impact on both popular culture and science communication.

Inspiring Future Generations

The series has inspired countless individuals, particularly young people, to pursue careers in science and technology. Hawking’s ability to make complex ideas accessible has encouraged a new generation of thinkers to explore the cosmos and question the nature of reality.

Bridging the Gap Between Science and the Public

By using engaging visuals and storytelling, the series serves as a bridge between the scientific community and the general public. It fosters a greater understanding of science, encouraging viewers to appreciate the value of scientific inquiry and the mysteries that remain unsolved.

Conclusion

“Into the Universe with Stephen Hawking” is more than just a documentary series; it is an invitation to

explore the wonders of the cosmos and ponder fundamental questions about existence, knowledge, and our place in the universe. Through stunning visuals, compelling storytelling, and Hawking's unique perspective, the series captures the imagination and inspires a sense of wonder about the universe we inhabit. As Hawking himself once said, "The greatest enemy of knowledge is not ignorance, it is the illusion of knowledge." This series encourages viewers to question, explore, and seek the truths that lie beyond the stars, making it an essential viewing experience for anyone fascinated by the universe.

Frequently Asked Questions

What is the main premise of 'Into the Universe with Stephen Hawking'?

'Into the Universe with Stephen Hawking' explores the mysteries of the universe, including black holes, the origins of the cosmos, and the possibility of extraterrestrial life, presented through a blend of scientific theory and stunning visual effects.

How does Stephen Hawking explain complex scientific concepts in the series?

Stephen Hawking uses engaging narratives, visual animations, and simple analogies to break down complex scientific concepts, making them accessible to a broad audience without sacrificing scientific accuracy.

What notable episodes are featured in 'Into the Universe with Stephen Hawking'?

The series features several notable episodes, including 'The Story of Everything,' which discusses the Big Bang and the evolution of the universe, and 'The Key to the Universe,' which delves into fundamental questions about life and the cosmos.

What impact did 'Into the Universe with Stephen Hawking' have on popular science communication?

'Into the Universe with Stephen Hawking' significantly impacted popular science communication by inspiring a greater interest in astrophysics and cosmology among the general public, utilizing captivating visuals and Hawking's unique insights.

How does the series address the concept of time travel?

The series addresses the concept of time travel by discussing theoretical frameworks like wormholes and the implications of Einstein's theories, presenting time as a dimension that could potentially be manipulated under certain conditions.

What themes of humanity and existence are explored in the

series?

The series explores themes of humanity's place in the universe, the search for extraterrestrial life, and the existential questions about the future of humanity, encouraging viewers to contemplate their role in the vast cosmos.

Find other PDF article:

<https://soc.up.edu.ph/12-quote/pdf?docid=fKE44-7703&title=chapter-2-lesson-3-carbon-compounds-answer-key.pdf>

[Into The Universe With Stephen Hawking](#)

In-Depth Review of 5V One 1 Channel Relay Module for Arduino

Discover the features of the 5V One Relay Module for Arduino, ideal for hobbyists and advanced users. Explore its pros, cons, and real-world applications.

Amazon.co.uk: 5v Relay Module

Yizhet Relay 5V 4 Channel, DC 5V 230V Relay Shield Module Control Board with Optocoupler for Raspberry Pi Arduino PIC AVR MCU DSP ARM TTL Logic (4 Channel) 522 £599 Buy any 1, Save 10% FREE delivery Mon 7 Jul on your first eligible order to UK or Ireland Or fastest delivery Tomorrow, 5 Jul Add to basket

Single Channel 5V 10A Relay Module - Sun Electronics

This 1 channel relay board operates on 5V. This can be used directly to control 240V power appliance from most of the microcontrollers and other control system circuits.

Generic 1 Channel 5V 10A Relay Module with Optocoupler

This 1 channel 5V 10A relay control board module with optocoupler modules is compliant with international safety standards, control, and load areas isolation trenches it has a single relay a genuine. The inputs of 1 Channel 5V 10A Relay Module are isolated to ...

5V Single Channel Relay Module 10A (CE05137) - Core ...

Sep 27, 2021 · This is a placeholder topic for “5V Single Channel Relay Module 10A” comments. A versatile relay board with opto-isolated input. The relay channel can drive up to 10A @28VDC Read more

How to Use 1-Channel Relay (5V 10A): Examples, Pinouts, and Specs

The 1-Channel Relay (5V 10A) is an electromechanical switch that allows a low-power control signal to operate a high-power device. It is widely used in automation, home appliances, and industrial control systems. This relay module is designed to work with a 5V control signal and can handle loads of up to 10A at 250V AC or 30V DC. Its compact design and ease of use make it ...

Single Channel 5V Relay Module High Level Trigger - ielectroney

Feb 7, 2024 · Single Channel 5V Relay Module High Level Trigger control board module with optocoupler modules is compliant with international safety standards. The inputs of 1 Channel 5V 10A Relay Module are isolated to protect any delicate control circuitry .The power supply and relay

instructions, lit, a disconnect are off.

5V Single Channel Relay Module 10A - Core Electronics

A versatile, compact relay board that can drive up to 10A @28VDC while only drawing approximately 60mA at 5V.

5V 1-Channel Low Level Trigger Relay Module With Optocoupler

The board includes LEDs to indicate the relay output status, and features a low level trigger. 1-Channel 10A 250VAC/30VDC relay rating Operating voltage: 5V Low level will activate the relay ON and HIGH level will deactivate it 2.54mm pitch headers Can be used with Raspberry Pi, Arduino, BeagleBone and many other microcontrollers.

Relay Module 10a Single Channel - Arduino 5v to 240v AC Mains ... - eBay

Find many great new & used options and get the best deals for Relay Module 10a Single Channel - Arduino 5v to 240v AC Mains Control - UK at the best online prices at eBay UK! Free delivery for many products!

5v Single Channel Relay Module 10A (High Trigger)

A single channel 5v relay breakout board which can drive up 10A at 250VAC or 15A at 125VAC. Also, an opto-isolated input is present.

5V 1 Channel Relay Module Without Optocoupler - ...

This single Channel 5V Relay Module operates on 5 VDC. And this a single channel relay module. This Relay Module is without optocoupler. So, the relay and signal both operate from a single power source. This 1 Channel Relay Module has connections for all 3 terminals of the relay i.e. NO, NC, and COM. Specifications: Operating Voltage: 5 VDC Current Rating: 7A @ 250VAC, ...

Email syncing issue - Microsoft Community

Feb 7, 2025 · 4. On my laptop:: Incoming: imap.mail.yahoo.com 993 Outgoing: smtp.mail.yahoo.com 465 On my iPhone .. I can't find that info. This issue just appeared out of ...

Microsoft 365 does not sync with Yahoo Mail

Oct 17, 2024 · The mail account updates for dispositioned emails between my phone / PC / macbook. The emails in my Yahoo account remain in the inbox. I have reinstalled the app. I ...

Yahoo Mail on Classic Outlook 365 Windows 11 - Can't connect to ...

Feb 12, 2025 · I realize that you've encountered a problem when connecting your Yahoo Mail on Classic Outlook for Windows. According to your description, you can connect this account ...

I would like to switch back to yahoo basic - Microsoft Q&A

Jul 6, 2019 · Locked Question. This question was migrated from the Microsoft Support Community. You can vote on whether it's helpful, but you can't add comments or replies or ...

Yahoo Imap not working with updated outlook - Microsoft ...

Jan 22, 2024 · Recently, there was an automatic update for Outlook and since then the yahoo mail is not working, while it was working perfectly before this update.I deleted the yahoo mail ...

one of two yahoo email accounts has stopped syncing with outlook ...

Feb 11, 2025 · my main yahoo email stopped syncing with android outlook on a samsung S23 2 days ago. I have another secondary yahoo mail account that is still syncing. I've tried resetting ...

I have lost access to my yahoo mail because Microsoft does not ...

Jan 24, 2025 · Dear Team, I have lost access to my yahoo mail account because Microsoft no longer send me account log in code. What should I do.

New Outlook Stopped Syncing Email - Microsoft Community

Jan 22, 2025 · Yesterday evening the new Outlook client stopped syncing with my Yahoo (sbcglobal.net) email account. I've tried rebooting my computer, removing and re-adding the ...

My Outlook mail randomly stops syncing with my Yahoo mail

Jun 11, 2024 · I have to use Outlook email for work, but all of my main accounts are in Yahoo. I added my Outlook email to Yahoo and it worked fine, but my Yahoo email will randomly stop ...

0x80190194 in Mail and Calendar / Won't let me login to my ...

Jul 3, 2023 · Based on the description, you are having an issue on Mail and Calendar / Won't let me login to my Outlook account on Outlook Beta. I really appreciate for the information you ...

Join Stephen Hawking on a captivating journey in "Into the Universe with Stephen Hawking." Discover how he explores the mysteries of space and time. Learn more!

[Back to Home](#)