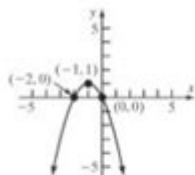


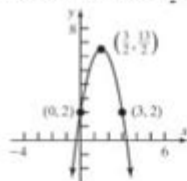
Instructor Solution Manual College Algebra 4th Edition

Section 2.4: Properties of Quadratic Functions



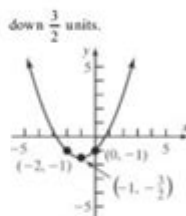
$$\begin{aligned} 30. \quad f(x) &= -2x^2 + 6x + 2 \\ &= -2\left(x^2 - 3x\right) + 2 \\ &= -2\left(x^2 - 3x + \frac{9}{4}\right) + 2 + \frac{9}{2} \\ &= -2\left(x - \frac{3}{2}\right)^2 + \frac{13}{2} \end{aligned}$$

Using the graph of $y = x^2$, shift right $\frac{3}{2}$ units, reflect about the x -axis, stretch vertically by a factor of 2, then shift up $\frac{13}{2}$ units.



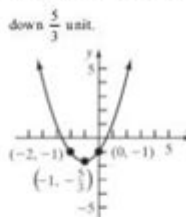
$$\begin{aligned} 31. \quad f(x) &= \frac{1}{2}x^2 + x - 1 \\ &= \frac{1}{2}(x^2 + 2x) - 1 \\ &= \frac{1}{2}(x^2 + 2x + 1) - 1 - \frac{1}{2} \\ &= \frac{1}{2}(x + 1)^2 - \frac{3}{2} \end{aligned}$$

Using the graph of $y = x^2$, shift left 1 unit, compress vertically by a factor of $\frac{1}{2}$, then shift



$$\begin{aligned} 32. \quad f(x) &= \frac{2}{3}x^2 + \frac{4}{3}x - 1 \\ &= \frac{2}{3}(x^2 + 2x) - 1 \\ &= \frac{2}{3}(x^2 + 2x + 1) - 1 - \frac{2}{3} \\ &= \frac{2}{3}(x + 1)^2 - \frac{5}{3} \end{aligned}$$

Using the graph of $y = x^2$, shift left 1 unit, compress vertically by a factor of $\frac{2}{3}$, then shift



33. a. For $f(x) = x^2 + 2x$, $a = 1$, $b = 2$, $c = 0$.
Since $a = 1 > 0$, the graph opens up.
The x -coordinate of the vertex is
$$x = \frac{-b}{2a} = \frac{-(2)}{2(1)} = \frac{-2}{2} = -1.$$

The y -coordinate of the vertex is
$$f\left(\frac{-b}{2a}\right) = f(-1) = (-1)^2 + 2(-1) = 1 - 2 = -1.$$

Thus, the vertex is $(-1, -1)$.
The axis of symmetry is the line $x = -1$.
The discriminant is
$$b^2 - 4ac = (2)^2 - 4(1)(0) = 4 > 0,$$
 so the graph has two x -intercepts.

INSTRUCTOR SOLUTION MANUAL COLLEGE ALGEBRA 4TH EDITION IS A VITAL RESOURCE FOR EDUCATORS TEACHING COLLEGE ALGEBRA COURSES. THIS MANUAL IS DESIGNED TO PROVIDE COMPREHENSIVE SOLUTIONS TO THE PROBLEMS FOUND IN THE TEXTBOOK, OFFERING INSTRUCTORS A VALUABLE TOOL TO ENHANCE THEIR TEACHING AND SUPPORT STUDENT LEARNING. WITH ITS DETAILED EXPLANATIONS AND STEP-BY-STEP METHODS, THE INSTRUCTOR SOLUTION MANUAL SERVES AS A GUIDE FOR EDUCATORS TO FACILITATE CLASSROOM DISCUSSIONS, PREPARE FOR LECTURES, AND ASSIST STUDENTS IN GRASPING COMPLEX ALGEBRAIC CONCEPTS.

OVERVIEW OF COLLEGE ALGEBRA

COLLEGE ALGEBRA IS A FOUNDATIONAL COURSE CRUCIAL FOR STUDENTS PURSUING DEGREES IN VARIOUS FIELDS SUCH AS MATHEMATICS, ENGINEERING, BUSINESS, AND THE SCIENCES. THE 4TH EDITION OF THE COLLEGE ALGEBRA TEXTBOOK ADDRESSES ESSENTIAL ALGEBRAIC PRINCIPLES, INCLUDING:

- FUNCTIONS AND THEIR PROPERTIES
- POLYNOMIAL AND RATIONAL FUNCTIONS
- EXPONENTIAL AND LOGARITHMIC FUNCTIONS
- SYSTEMS OF EQUATIONS AND INEQUALITIES
- SEQUENCES AND SERIES
- MATRICES AND DETERMINANTS

THE TEXTBOOK AIMS TO PROVIDE STUDENTS WITH A SOLID UNDERSTANDING OF ALGEBRAIC CONCEPTS AND PROBLEM-SOLVING TECHNIQUES THAT THEY WILL ENCOUNTER IN ADVANCED MATHEMATICS COURSES.

THE IMPORTANCE OF THE INSTRUCTOR SOLUTION MANUAL

THE INSTRUCTOR SOLUTION MANUAL COLLEGE ALGEBRA 4TH EDITION IS ESSENTIAL FOR SEVERAL REASONS:

1. COMPREHENSIVE SOLUTIONS

THE MANUAL PROVIDES COMPLETE SOLUTIONS TO EVERY PROBLEM IN THE TEXTBOOK. THIS INCLUDES:

- STEP-BY-STEP METHODOLOGIES
- CLEAR EXPLANATIONS OF CONCEPTS
- ALTERNATIVE APPROACHES FOR SOLVING PROBLEMS

THIS COMPREHENSIVE NATURE ENSURES THAT INSTRUCTORS CAN CONFIDENTLY ADDRESS ANY QUESTION POSED BY STUDENTS, BOLSTERING THEIR OWN UNDERSTANDING AND FLUENCY IN THE SUBJECT MATTER.

2. TEACHING SUPPORT

INSTRUCTORS CAN LEVERAGE THE SOLUTION MANUAL TO:

- PREPARE EFFECTIVE LESSON PLANS
- DEVELOP QUIZZES AND EXAMS
- PROVIDE ADDITIONAL RESOURCES FOR STUDENTS STRUGGLING WITH SPECIFIC TOPICS

BY UTILIZING THE MANUAL, EDUCATORS CAN CREATE A MORE ENGAGING AND SUPPORTIVE LEARNING ENVIRONMENT.

3. ENHANCING STUDENT UNDERSTANDING

EDUCATORS CAN USE THE SOLUTION MANUAL TO DEMONSTRATE PROBLEM-SOLVING TECHNIQUES IN CLASS, HELPING STUDENTS TO:

- UNDERSTAND THE REASONING BEHIND EACH STEP
- DEVELOP CRITICAL THINKING SKILLS
- GAIN CONFIDENCE IN THEIR PROBLEM-SOLVING ABILITIES

THE SOLUTIONS CAN ALSO SERVE AS A REFERENCE FOR STUDENTS WHO STUDY OUTSIDE OF CLASS, ENABLING THEM TO CHECK THEIR WORK AND ENSURE THEY ARE ON THE RIGHT TRACK.

KEY FEATURES OF THE INSTRUCTOR SOLUTION MANUAL

THE INSTRUCTOR SOLUTION MANUAL COLLEGE ALGEBRA 4TH EDITION INCLUDES SEVERAL KEY FEATURES THAT MAKE IT AN INVALUABLE RESOURCE FOR EDUCATORS:

1. DETAILED EXPLANATIONS

EACH SOLUTION IS ACCOMPANIED BY DETAILED EXPLANATIONS. THIS NOT ONLY CLARIFIES THE STEPS TAKEN TO ARRIVE AT THE ANSWER BUT ALSO REINFORCES THE UNDERLYING MATHEMATICAL PRINCIPLES. THE EXPLANATIONS CAN HELP INSTRUCTORS CONVEY COMPLEX IDEAS MORE EFFECTIVELY TO THEIR STUDENTS.

2. ORGANIZED STRUCTURE

THE MANUAL IS ORGANIZED IN A MANNER THAT MIRRORS THE TEXTBOOK, MAKING IT EASY FOR INSTRUCTORS TO FIND THE CORRESPONDING SOLUTIONS FOR EACH CHAPTER AND SECTION. THIS ORGANIZATION SAVES TIME AND ENHANCES EFFICIENCY WHEN PREPARING FOR LECTURES OR GRADING ASSIGNMENTS.

3. SUPPLEMENTARY MATERIALS

IN ADDITION TO SOLUTIONS, THE MANUAL MAY INCLUDE SUPPLEMENTARY MATERIALS SUCH AS:

- SAMPLE TEST QUESTIONS
- ADDITIONAL PRACTICE PROBLEMS
- TEACHING TIPS AND STRATEGIES

THESE RESOURCES CAN AID INSTRUCTORS IN DIVERSIFYING THEIR TEACHING METHODS AND ENRICHING THE CLASSROOM EXPERIENCE.

UTILIZING THE INSTRUCTOR SOLUTION MANUAL EFFECTIVELY

TO MAXIMIZE THE BENEFITS OF THE INSTRUCTOR SOLUTION MANUAL COLLEGE ALGEBRA 4TH EDITION, EDUCATORS CAN FOLLOW THESE STRATEGIES:

1. FAMILIARIZE YOURSELF WITH THE CONTENT

BEFORE THE SEMESTER BEGINS, INSTRUCTORS SHOULD THOROUGHLY REVIEW THE SOLUTIONS AND EXPLANATIONS PROVIDED IN THE MANUAL. THIS PREPARATION ALLOWS EDUCATORS TO ANTICIPATE QUESTIONS FROM STUDENTS AND ADDRESS POTENTIAL MISCONCEPTIONS PROACTIVELY.

2. INTEGRATE SOLUTIONS INTO TEACHING

INSTRUCTORS SHOULD INCORPORATE THE SOLUTIONS INTO THEIR TEACHING METHODS. FOR INSTANCE:

- USE SOLUTIONS TO DEMONSTRATE PROBLEM-SOLVING TECHNIQUES DURING LECTURES.
- ASSIGN PRACTICE PROBLEMS FROM THE TEXTBOOK AND DISCUSS THE SOLUTIONS IN CLASS.
- ENCOURAGE STUDENTS TO APPROACH SIMILAR PROBLEMS USING THE METHODS OUTLINED IN THE MANUAL.

3. ENCOURAGE COLLABORATION

INSTRUCTORS CAN FACILITATE GROUP WORK BY ASSIGNING PROBLEMS FROM THE TEXTBOOK AND ALLOWING STUDENTS TO COLLABORATE ON FINDING SOLUTIONS. THE INSTRUCTOR CAN THEN USE THE MANUAL TO GUIDE DISCUSSIONS AND PROVIDE INSIGHTS INTO COMMON ERRORS OR ALTERNATIVE METHODS.

4. PROVIDE FEEDBACK

AS STUDENTS WORK THROUGH PROBLEMS, INSTRUCTORS CAN USE THE SOLUTION MANUAL TO PROVIDE TIMELY FEEDBACK. BY COMPARING STUDENT RESPONSES TO THE MANUAL, EDUCATORS CAN IDENTIFY AREAS WHERE STUDENTS EXCEL OR STRUGGLE, ALLOWING FOR TARGETED INTERVENTIONS.

CHALLENGES AND CONSIDERATIONS

WHILE THE INSTRUCTOR SOLUTION MANUAL COLLEGE ALGEBRA 4TH EDITION IS AN INVALUABLE RESOURCE, THERE ARE CHALLENGES TO CONSIDER:

1. OVER-RELIANCE ON THE MANUAL

EDUCATORS MUST BE CAUTIOUS NOT TO OVERLY RELY ON THE SOLUTION MANUAL FOR THEIR TEACHING. WHILE IT PROVIDES VALUABLE SOLUTIONS, INSTRUCTORS SHOULD STRIVE TO DEVELOP THEIR OWN UNDERSTANDING AND TEACHING METHODS TO ENSURE A ROBUST EDUCATIONAL EXPERIENCE.

2. BALANCING GUIDANCE WITH INDEPENDENCE

INSTRUCTORS SHOULD AIM TO GUIDE STUDENTS USING THE SOLUTION MANUAL WITHOUT DIMINISHING THEIR INDEPENDENCE IN PROBLEM-SOLVING. ENCOURAGING STUDENTS TO TRY PROBLEMS BEFORE CONSULTING THE MANUAL CAN FOSTER CONFIDENCE AND CRITICAL THINKING SKILLS.

3. KEEPING CONTENT FRESH

MATHEMATICS EDUCATION IS CONTINUALLY EVOLVING, AND INSTRUCTORS SHOULD SEEK PROFESSIONAL DEVELOPMENT OPPORTUNITIES TO STAY INFORMED ABOUT NEW TEACHING STRATEGIES AND RESOURCES. WHILE THE SOLUTION MANUAL IS A TREMENDOUS ASSET, IT SHOULD BE COMPLEMENTED WITH CURRENT PEDAGOGICAL PRACTICES.

CONCLUSION

THE INSTRUCTOR SOLUTION MANUAL COLLEGE ALGEBRA 4TH EDITION IS A CRUCIAL TOOL FOR EDUCATORS TEACHING COLLEGE ALGEBRA. IT OFFERS COMPREHENSIVE SOLUTIONS, TEACHING SUPPORT, AND RESOURCES THAT ENHANCE STUDENT UNDERSTANDING. BY UTILIZING THE MANUAL EFFECTIVELY, INSTRUCTORS CAN CREATE A DYNAMIC AND SUPPORTIVE LEARNING ENVIRONMENT THAT FOSTERS STUDENT SUCCESS IN ALGEBRA AND BEYOND. AS EDUCATORS NAVIGATE THE COMPLEXITIES OF TEACHING MATHEMATICS, THE SOLUTION MANUAL SERVES AS A RELIABLE GUIDE, ENSURING THAT BOTH INSTRUCTORS AND STUDENTS CAN CONFIDENTLY TACKLE THE CHALLENGES OF COLLEGE ALGEBRA.

FREQUENTLY ASKED QUESTIONS

WHAT IS AN INSTRUCTOR SOLUTION MANUAL FOR COLLEGE ALGEBRA 4TH EDITION?

AN INSTRUCTOR SOLUTION MANUAL FOR COLLEGE ALGEBRA 4TH EDITION IS A COMPREHENSIVE GUIDE THAT PROVIDES DETAILED SOLUTIONS TO ALL THE PROBLEMS FOUND IN THE TEXTBOOK, INTENDED FOR USE BY EDUCATORS TO AID IN TEACHING AND GRADING.

WHO CAN ACCESS THE INSTRUCTOR SOLUTION MANUAL FOR COLLEGE ALGEBRA 4TH EDITION?

TYPICALLY, THE INSTRUCTOR SOLUTION MANUAL IS AVAILABLE ONLY TO EDUCATORS, SUCH AS COLLEGE PROFESSORS OR INSTRUCTORS, AND IS NOT INTENDED FOR STUDENT USE.

WHERE CAN I FIND THE INSTRUCTOR SOLUTION MANUAL FOR COLLEGE ALGEBRA 4TH EDITION?

THE INSTRUCTOR SOLUTION MANUAL CAN USUALLY BE OBTAINED FROM THE PUBLISHER'S WEBSITE, EDUCATIONAL RESOURCE PROVIDERS, OR THROUGH ACADEMIC INSTITUTIONS THAT HAVE ADOPTED THE TEXTBOOK.

IS THE INSTRUCTOR SOLUTION MANUAL FOR COLLEGE ALGEBRA 4TH EDITION AVAILABLE FOR FREE?

WHILE SOME RESOURCES MAY OFFER FREE SAMPLES OR SECTIONS, THE COMPLETE INSTRUCTOR SOLUTION MANUAL IS TYPICALLY SOLD OR PROVIDED THROUGH EDUCATIONAL INSTITUTIONS AND MAY NOT BE AVAILABLE FOR FREE.

WHAT TOPICS ARE COVERED IN THE COLLEGE ALGEBRA 4TH EDITION INSTRUCTOR SOLUTION MANUAL?

THE MANUAL COVERS A RANGE OF TOPICS INCLUDING FUNCTIONS, EQUATIONS, INEQUALITIES, POLYNOMIALS, RATIONAL FUNCTIONS, AND SYSTEMS OF EQUATIONS, PROVIDING STEP-BY-STEP SOLUTIONS TO EXERCISES IN THESE AREAS.

HOW CAN THE INSTRUCTOR SOLUTION MANUAL IMPROVE TEACHING EFFECTIVENESS?

THE MANUAL CAN ENHANCE TEACHING EFFECTIVENESS BY PROVIDING EDUCATORS WITH CLEAR SOLUTIONS AND TEACHING STRATEGIES, ALLOWING THEM TO ANTICIPATE STUDENT QUESTIONS AND CLARIFY COMPLEX CONCEPTS MORE EASILY.

ARE THERE ANY ONLINE RESOURCES THAT COMPLEMENT THE INSTRUCTOR SOLUTION MANUAL FOR COLLEGE ALGEBRA 4TH EDITION?

YES, MANY PUBLISHERS PROVIDE ONLINE RESOURCES SUCH AS VIDEO TUTORIALS, ADDITIONAL PRACTICE PROBLEMS, AND INTERACTIVE LEARNING TOOLS THAT COMPLEMENT THE INSTRUCTOR SOLUTION MANUAL.

CAN THE INSTRUCTOR SOLUTION MANUAL FOR COLLEGE ALGEBRA 4TH EDITION BE USED FOR SELF-STUDY?

WHILE IT IS PRIMARILY DESIGNED FOR INSTRUCTORS, STUDENTS MAY USE IT FOR SELF-STUDY TO CHECK THEIR ANSWERS AND UNDERSTAND THE PROBLEM-SOLVING PROCESS, BUT IT IS RECOMMENDED TO USE IT ALONGSIDE THE TEXTBOOK.

WHAT ARE THE BENEFITS OF USING AN INSTRUCTOR SOLUTION MANUAL IN TEACHING COLLEGE ALGEBRA?

BENEFITS INCLUDE PROVIDING ACCURATE SOLUTIONS FOR GRADING, SAVING TIME IN PREPARING LECTURES, AND ENHANCING THE QUALITY OF FEEDBACK GIVEN TO STUDENTS ON THEIR WORK.

HOW DOES THE INSTRUCTOR SOLUTION MANUAL FOR COLLEGE ALGEBRA 4TH EDITION DIFFER FROM STUDENT SOLUTIONS MANUALS?

THE INSTRUCTOR SOLUTION MANUAL PROVIDES COMPLETE AND DETAILED SOLUTIONS ALONG WITH TEACHING INSIGHTS, WHILE STUDENT SOLUTIONS MANUALS TYPICALLY OFFER SIMPLIFIED ANSWERS OR SELECTED SOLUTIONS TO PROBLEMS.

Find other PDF article:

<https://soc.up.edu.ph/28-font/pdf?trackid=pDE52-9351&title=history-of-vaping-icd-10.pdf>

Instructor Solution Manual College Algebra 4th Edition

teacher, lecturer, instructor

Oct 26, 2006 · teacher, lecturer, instructorteacher (n.) Teacher is the general term for someone whose job is to teach. There are ...

teacher, lecturer, instructor □ □ □ □ □ □ □ □ □ □ □ □

Jul 14, 2024 · teacher,lecturer,instructor teacher lecturer instructor
* ...

lecturer \square instructor $\square\square\square$ - $\square\square\square\square$

[illegible]

lecturer/instructor -

Aug 9, 2024 · lecturer[]instructor[]Lecturer[]Instructor[]1. []
[]Lecturer[] ...

lecturer/instructor -

Jun 18, 2025 · lecturer[]instructor[]Lecturer[]Instructor[]1. [] Lecturer[]
[] ...

"faculty " "instructor " "teacher " "professor - HiNative

faculty □□□□Instructors and teachers are basically the same. You learn something from both. Faculty is the staff that works at a place. A school faculty is anyone that works for the school. ...

□□□□“□□”□□□□□□□□□□ - □□□□

Dec 14, 2024 · 中国“双碳”目标实现路径与政策建议 - Professor 王强 - Associate Professor 李华 - Lecturer ...

Server is enforcing consistency for this ...

```
sv_consistency 0 "Server is enforcing
consistency for this file" ...
```

```
"instructor" | "tutor" | | | | | HiNative
```

instructorTutor is usually a private teacher that teaches small group of students or single student. Instructor is a person that teaches you some sort of skills such as driving, swimming etc.

Supervisor Instructor Mentor -

Supervisor Instructor Mentor supervisor instructor

teacher, lecturer, instructor

Oct 26, 2006 · teacher, lecturer, instructor teacher (n.) Teacher is the general term for someone whose job is to teach. There are ...

teacher, lecturer, instructor

Jul 14, 2024 · teacher, lecturer, instructor teacher lecturer instructor

lecturer instructor -

Aug 14, 2024 · lecturer instructor lecturer instructor lecturer

lecturer instructor -

Aug 9, 2024 · lecturer instructor Lecturer Instructor 1. Lecturer

lecturer instructor -

Jun 18, 2025 · lecturer instructor Lecturer Instructor 1. Lecturer

"faculty " "instructor " "teacher " "professor - HiNative

faculty Instructors and teachers are basically the same. You learn something from both. Faculty is the staff that works at a place. A school faculty is anyone that works for the school. ...

“” -

Dec 14, 2024 · “” - Professor - Associate Professor - Lecturer ...

2 Server is enforcing consistency for this ...

sv_consistency 0 “Server is enforcing consistency for this file”

"instructor" "tutor" | HiNative

instructor Tutor is usually a private teacher that teaches small group of students or single student. Instructor is a person that teaches you some sort of skills such as driving, swimming etc.

Supervisor Instructor Mentor -

Supervisor Instructor Mentor supervisor instructor

Unlock the full potential of your studies with the Instructor Solution Manual for College Algebra 4th Edition. Discover how it can enhance your learning experience!

[Back to Home](#)