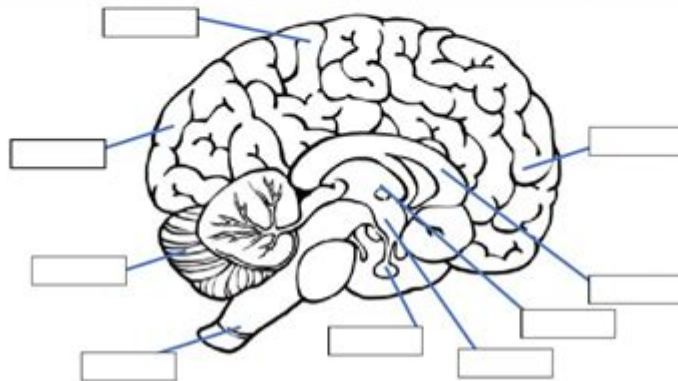


Internal View Of The Brain Worksheet

Answer Key

Internal View of the Brain
This worksheet is worth 10 points

Part I: Label				
Left frontal lobe	Left Parietal Lobe	Left occipital lobe	Cerebellum	Corpus callosum
Thalamus	Hypothalamus	Pituitary gland	Brain stem	



Part II: Matching: Functions and lobes

- | | |
|------------------------|--|
| 1. ___ Frontal Lobe | A. known as the relay center |
| 2. ___ Parietal Lobe | B. responsible for higher level cognitive thought |
| 3. ___ Occipital Lobe | C. responsible for communicating between the hemispheres |
| 4. ___ Cerebellum | D. called the master gland |
| 5. ___ Corpus Callosum | E. responsible for breathing, heart beat |
| 6. ___ Thalamus | F. responsible for homeostasis and hormones |
| 7. ___ Hypothalamus | G. responsible for processing sensory input |
| 8. ___ Pituitary Gland | H. responsible for balance and coordination |
| 9. ___ Brain stem | I. responsible for visual processing |

Internal view of the brain worksheet answer key is a crucial educational resource for students and educators alike. Understanding the complex structure of the human brain is fundamental in numerous fields, including biology, psychology, and medicine. This article will delve into the internal view of the brain, discussing key components, functions, and how worksheets can enhance learning. Additionally, we will provide insights into how to use an answer key effectively for educational purposes.

Understanding the Human Brain

The human brain is an intricate organ, comprising billions of neurons and synapses that work together to control every aspect of our thoughts, emotions, and bodily functions. It is primarily divided into three main parts: the cerebrum, cerebellum, and brainstem. Each component plays a vital role in our daily lives.

The Major Parts of the Brain

1. **Cerebrum:** This is the largest part of the brain, responsible for higher cognitive functions such as reasoning, problem-solving, and emotional regulation. The cerebrum is divided into two hemispheres, each containing four lobes:
 - Frontal Lobe: Involved in decision-making, problem-solving, and planning.
 - Parietal Lobe: Processes sensory information and spatial awareness.
 - Occipital Lobe: Responsible for visual processing.
 - Temporal Lobe: Involved in auditory perception and memory.
2. **Cerebellum:** Located under the cerebrum, the cerebellum is essential for coordination, balance, and fine motor skills. It integrates sensory input to ensure smooth movements.
3. **Brainstem:** This structure connects the brain to the spinal cord and is responsible for regulating vital life functions such as heart rate, breathing, and blood pressure. It includes the midbrain, pons, and medulla oblongata.

The Importance of Worksheets in Learning About the Brain

Worksheets are effective educational tools that can enhance understanding of complex subjects like the internal view of the brain. They provide structured opportunities for students to engage with the material actively.

Benefits of Using Worksheets

- **Interactive Learning:** Worksheets encourage students to participate actively rather than passively absorbing information.
- **Reinforcement of Knowledge:** By completing worksheets, students can reinforce their understanding of the brain's structure and functions.
- **Assessment of Knowledge:** Worksheets often come with answer keys, allowing students to check their understanding and identify areas where they need

improvement.

- Visual Learning: Many worksheets include diagrams and illustrations that help visualize the brain's anatomy.

Creating an Effective Internal View of the Brain Worksheet

When designing a worksheet focused on the internal view of the brain, it is essential to include various elements that cater to different learning styles. Here are some tips for creating an effective worksheet:

Key Components to Include

1. Diagrams: Incorporate labeled diagrams of the brain that highlight its different parts. These visuals can significantly enhance comprehension.
2. Matching Exercises: Create sections where students can match brain parts with their functions.
3. Fill-in-the-Blank Questions: These can help students recall specific terms and definitions related to the brain's anatomy.
4. Short Answer Questions: Encourage critical thinking by asking students to explain the significance of different brain regions.
5. Crossword Puzzles: These can make learning fun and engaging while reinforcing vocabulary.

Using the Answer Key Effectively

An answer key is an essential tool for both teachers and students. It serves multiple purposes in the educational process.

How to Utilize an Answer Key

- Self-Assessment: Students can use the answer key to check their work after completing the worksheet. This immediate feedback helps reinforce learning and identify misconceptions.
- Peer Review: In group settings, students can exchange their worksheets and use the answer key to evaluate each other's understanding.
- Guided Instruction: Teachers can use the answer key to facilitate discussions, clarifying any points of confusion and expanding on topics where students may struggle.
- Targeted Learning: By analyzing incorrect answers, students can focus their studies on specific areas of weakness, optimizing their learning experience.

Conclusion

The **internal view of the brain worksheet answer key** is not just a collection of answers; it is an educational tool that fosters a deeper understanding of one of the most complex organs in the human body. By utilizing worksheets and answer keys effectively, students can enhance their learning experience, engage more deeply with the material, and develop a solid foundation in neuroscience. As we continue to explore the mysteries of the brain, resources like these will remain invaluable in the educational landscape, promoting curiosity and knowledge in the fascinating field of brain science.

Frequently Asked Questions

What is the purpose of the 'internal view of the brain worksheet'?

The worksheet is designed to help students identify and understand the different parts of the brain and their functions by providing a visual representation and corresponding explanations.

What key areas of the brain are typically highlighted in the internal view worksheet?

Key areas often highlighted include the cerebrum, cerebellum, brainstem, limbic system, and various lobes such as the frontal, parietal, temporal, and occipital lobes.

How can teachers effectively use the answer key provided with the internal view of the brain worksheet?

Teachers can use the answer key to facilitate discussions, check for understanding, and provide feedback on students' completed worksheets to ensure they grasp the concepts being taught.

Are there any online resources available to complement the internal view of the brain worksheet?

Yes, many educational websites offer interactive brain models, videos, and quizzes that can enhance learning and provide more context to the information presented in the worksheet.

What age group is the internal view of the brain

worksheet most suitable for?

The worksheet is typically suitable for middle school and high school students, but it can also be adapted for younger learners with simplified explanations.

What skills do students develop by completing the internal view of the brain worksheet?

Students develop critical thinking, spatial awareness, and a better understanding of human anatomy and physiology, as well as skills in labeling and diagram interpretation.

Find other PDF article:

<https://soc.up.edu.ph/27-proof/Book?ID=XjN53-1885&title=history-of-chain-gangs.pdf>

Internal View Of The Brain Worksheet Answer Key

C# internal 内部化 - 内部

ClassB Member1 Member4 Member5 public internal protected internal
ClassA ClassC ClassA ...

LM-studio 内部化 - 内部

LM-studio 内部化

Cursor app 内部化, 内部化 - 内部

Cursor 内部化, network error message. 内部化, 内部化...

Broadcast DVR Server 内部化 ? 内部化 - 内部

win+g “Broadcast DVR server” Broadcast DVR server 内部化
内部化 ...

500 Internal Server Error 内部化 - 内部

500 Internal Server Error 500 内部化 HTTP 内部化 ...

Intel (R) UHD Graphics 内部化

Feb 13, 2025 · Intel (R) UHD Graphics i7-11700 UHD 750 32 内部化
256 内部化 1.3GHz 内部化 ...

IRR 内部化 - 内部

内部化, Modified internal rate of return 内部化 IRR 内部化 NPV=0 内部化 ...

video memory management internal

video memory management internal video memory management internal win10

High definition audioRealtekSep 7, 2023 · Realtekhigh definition audio

0dayScene GroupPTBBSInternal GroupSoW

C# internalClassBMember1Member4Member5publicinternalprotected internalClassA ClassCClassA

LM-studioLM-studio

Cursor appCursor network error message.

Broadcast DVR ServerBroadcast DVR server

500 Internal Server Error500 Internal Server ErrorHTTP

Intel (R) UHD GraphicsFeb 13, 2025 · UHDi7-11700UHD 75032 256 1.3GHz

IRRModified internal rate of return IRR NPV=0

video memory management internalvideo memory management internal win10

High definition audioRealtekSep 7, 2023 · Realtekhigh definition audio

0dayScene GroupPTBBSInternal GroupSoW

Unlock the mysteries of the brain with our 'internal view of the brain worksheet answer key.' Discover how to enhance your understanding today!

[Back to Home](#)