

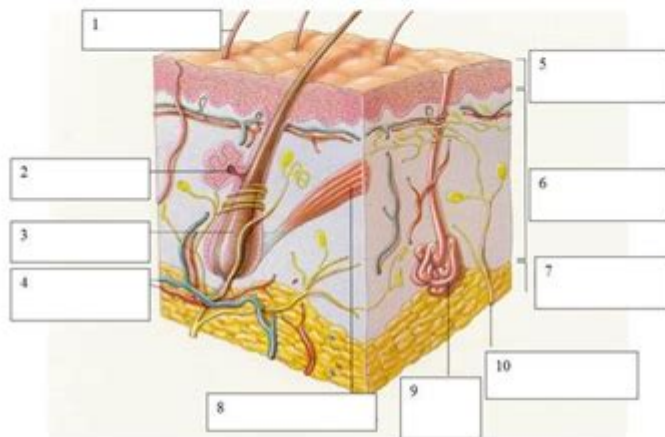
Integumentary System Study Guide Answer Sheet

Name: _____ Period: _____
Unit 2 Integumentary System



5. Be able to label the parts of the skin and accessory structures, even if it is a picture you have never seen before. (2.3, various days)

Word Bank
Sensory receptor, sweat gland, arrector pili muscle, hypodermis, dermis, epidermis, blood vessels, hair follicle, sebaceous gland, hair



6. What is a pigment and what are the two pigments in your skin? (Standard 2.4, Day 30)

7. What are melanocytes? Where are they found? (Standard 2.4, Day 30)

8. Fill in the blanks: The sun can be beneficial because it helps your body make Vitamin _____. Vitamin D is important because it _____.

9. How do melanocytes protect your skin against UV radiation from the sun? (Standard 2.4, Day 30)

INTEGUMENTARY SYSTEM STUDY GUIDE ANSWER SHEET IS A CRUCIAL RESOURCE FOR STUDENTS AND PROFESSIONALS ALIKE WHO ARE STRIVING TO UNDERSTAND THE COMPLEX AND VITAL FUNCTIONS OF THE INTEGUMENTARY SYSTEM. THIS SYSTEM, WHICH COMPRISES THE SKIN, HAIR, NAILS, AND ASSOCIATED GLANDS, PLAYS A KEY ROLE IN PROTECTING THE BODY, REGULATING TEMPERATURE, AND PROVIDING SENSORY INFORMATION. AS YOU PREPARE FOR YOUR EXAMS OR DEEPEN YOUR UNDERSTANDING, HAVING AN EFFECTIVE STUDY GUIDE CAN HELP YOU GRASP THE ESSENTIAL CONCEPTS AND TERMINOLOGY RELATED TO THE INTEGUMENTARY SYSTEM.

UNDERSTANDING THE INTEGUMENTARY SYSTEM

THE INTEGUMENTARY SYSTEM IS THE BODY'S LARGEST ORGAN SYSTEM AND SERVES MULTIPLE FUNCTIONS. TO APPRECIATE ITS COMPLEXITY, IT'S IMPORTANT TO BREAK IT DOWN INTO ITS PRIMARY COMPONENTS AND ROLES.

COMPONENTS OF THE INTEGUMENTARY SYSTEM

THE INTEGUMENTARY SYSTEM CONSISTS OF SEVERAL PARTS, EACH CONTRIBUTING TO ITS OVERALL FUNCTION:

- **SKIN:** THE OUTERMOST LAYER, WHICH INCLUDES THE EPIDERMIS, DERMIS, AND SUBCUTANEOUS TISSUE.
- **HAIR:** PROVIDES INSULATION AND PROTECTION, AS WELL AS SENSITIVITY TO TOUCH.
- **NAILS:** PROTECT THE DISTAL PHALANX AND ENHANCE FINE MOTOR SKILLS.
- **GLANDS:** INCLUDE SWEAT GLANDS AND SEBACEOUS GLANDS, WHICH HELP IN TEMPERATURE REGULATION AND LUBRICATION.

FUNCTIONS OF THE INTEGUMENTARY SYSTEM

THE INTEGUMENTARY SYSTEM PERFORMS SEVERAL VITAL FUNCTIONS:

1. **PROTECTION:** ACTS AS A PHYSICAL BARRIER AGAINST PATHOGENS, HARMFUL CHEMICALS, AND PHYSICAL DAMAGE.
2. **TEMPERATURE REGULATION:** MAINTAINS BODY TEMPERATURE THROUGH SWEAT PRODUCTION AND BLOOD FLOW REGULATION.
3. **SENSORY PERCEPTION:** CONTAINS NERVE ENDINGS THAT DETECT TOUCH, PRESSURE, PAIN, AND TEMPERATURE.
4. **VITAMIN D SYNTHESIS:** FACILITATES THE PRODUCTION OF VITAMIN D WHEN EXPOSED TO SUNLIGHT, WHICH IS ESSENTIAL FOR CALCIUM ABSORPTION.
5. **EXCRETION:** ASSISTS IN THE REMOVAL OF WASTE PRODUCTS THROUGH SWEAT.

KEY TERMS IN INTEGUMENTARY SYSTEM STUDY

FAMILIARIZING YOURSELF WITH KEY TERMS WILL ENHANCE YOUR UNDERSTANDING AND RETENTION OF THE SUBJECT MATTER. BELOW ARE SOME IMPORTANT TERMS RELATED TO THE INTEGUMENTARY SYSTEM:

- **EPIDERMIS:** THE OUTER LAYER OF SKIN, PRIMARILY COMPOSED OF KERATINIZED CELLS.
- **DERMIS:** THE THICKER LAYER BENEATH THE EPIDERMIS, CONTAINING CONNECTIVE TISSUE, HAIR FOLLICLES, AND GLANDS.
- **SUBCUTANEOUS LAYER:** ALSO KNOWN AS HYPODERMIS, IT CONSISTS OF FAT AND CONNECTIVE TISSUES THAT INSULATE THE BODY.
- **KERATINOCYTES:** THE PRIMARY CELL TYPE FOUND IN THE EPIDERMIS, RESPONSIBLE FOR PRODUCING KERATIN.
- **MELANOCYTES:** CELLS THAT PRODUCE MELANIN, CONTRIBUTING TO SKIN PIGMENTATION.

STUDY TECHNIQUES FOR THE INTEGUMENTARY SYSTEM

WHEN STUDYING THE INTEGUMENTARY SYSTEM, IT'S ESSENTIAL TO EMPLOY EFFECTIVE STUDY TECHNIQUES TO ENHANCE COMPREHENSION AND RETENTION. HERE ARE SEVERAL METHODS TO CONSIDER:

1. VISUAL AIDS

UTILIZE DIAGRAMS AND MODELS TO VISUALIZE THE STRUCTURE OF THE SKIN AND ITS COMPONENTS. VISUAL AIDS CAN HELP YOU UNDERSTAND COMPLEX CONCEPTS LIKE THE LAYERS OF THE SKIN AND THE FUNCTION OF VARIOUS GLANDS.

2. FLASHCARDS

CREATE FLASHCARDS FOR KEY TERMS AND DEFINITIONS. THIS METHOD ENCOURAGES ACTIVE RECALL, MAKING IT EASIER TO REMEMBER IMPORTANT INFORMATION.

3. PRACTICE QUIZZES

ENGAGE IN PRACTICE QUIZZES TO TEST YOUR KNOWLEDGE. MANY ONLINE RESOURCES OFFER QUIZZES RELATED TO THE INTEGUMENTARY SYSTEM, ALLOWING YOU TO ASSESS YOUR UNDERSTANDING AND IDENTIFY AREAS FOR IMPROVEMENT.

4. GROUP STUDY SESSIONS

STUDYING IN GROUPS CAN FOSTER DISCUSSION AND ENHANCE UNDERSTANDING. EXPLAINING CONCEPTS TO PEERS REINFORCES YOUR KNOWLEDGE AND EXPOSES YOU TO DIFFERENT PERSPECTIVES.

SAMPLE QUESTIONS FOR INTEGUMENTARY SYSTEM STUDY GUIDE

TO HELP YOU PREPARE EFFECTIVELY, HERE ARE SOME SAMPLE QUESTIONS THAT CAN BE INCLUDED IN YOUR STUDY GUIDE ANSWER SHEET:

MULTIPLE-CHOICE QUESTIONS

1. WHAT IS THE PRIMARY FUNCTION OF THE SEBACEOUS GLANDS?
 - A) TEMPERATURE REGULATION
 - B) PRODUCTION OF SWEAT
 - C) SECRETION OF OIL TO LUBRICATE THE SKIN
 - D) SENSORY RECEPTION
2. WHICH LAYER OF THE SKIN CONTAINS THE MAJORITY OF BLOOD VESSELS?
 - A) EPIDERMIS
 - B) DERMIS
 - C) SUBCUTANEOUS LAYER
 - D) BASEMENT MEMBRANE

TRUE OR FALSE QUESTIONS

1. T/F: THE EPIDERMIS IS RESPONSIBLE FOR PRODUCING SWEAT.
2. T/F: MELANOCYTES ARE FOUND IN THE DERMIS AND ARE RESPONSIBLE FOR SKIN COLOR.

SHORT ANSWER QUESTIONS

1. DESCRIBE THE ROLE OF KERATIN IN THE INTEGUMENTARY SYSTEM.
2. EXPLAIN HOW THE INTEGUMENTARY SYSTEM CONTRIBUTES TO HOMEOSTASIS.

COMMON DISORDERS OF THE INTEGUMENTARY SYSTEM

UNDERSTANDING COMMON DISORDERS CAN ENHANCE YOUR KNOWLEDGE OF THE INTEGUMENTARY SYSTEM'S FUNCTIONS AND VULNERABILITIES. HERE ARE A FEW PREVALENT CONDITIONS:

- **PSORIASIS:** A CHRONIC AUTOIMMUNE CONDITION THAT LEADS TO THE RAPID GROWTH OF SKIN CELLS, RESULTING IN SCALING AND INFLAMMATION.
- **ECZEMA:** A CONDITION CHARACTERIZED BY ITCHY, INFLAMED SKIN, OFTEN TRIGGERED BY ALLERGENS OR IRRITANTS.
- **DERMATITIS:** INFLAMMATION OF THE SKIN, WHICH CAN BE CAUSED BY CONTACT WITH ALLERGENS OR IRRITANTS.
- **SKIN CANCER:** ABNORMAL GROWTH OF SKIN CELLS, OFTEN DUE TO EXCESSIVE SUN EXPOSURE; INCLUDES TYPES LIKE MELANOMA, BASAL CELL CARCINOMA, AND SQUAMOUS CELL CARCINOMA.

CONCLUSION

IN SUMMARY, AN **INTEGUMENTARY SYSTEM STUDY GUIDE ANSWER SHEET** IS AN INVALUABLE TOOL FOR ANYONE DELVING INTO THE COMPLEXITIES OF THIS ESSENTIAL ORGAN SYSTEM. BY UNDERSTANDING THE COMPONENTS, FUNCTIONS, TERMINOLOGY, AND COMMON DISORDERS, YOU CAN DEVELOP A COMPREHENSIVE GRASP OF HOW THE INTEGUMENTARY SYSTEM PROTECTS AND MAINTAINS THE BODY. UTILIZE EFFECTIVE STUDY TECHNIQUES, ENGAGE WITH PRACTICE QUESTIONS, AND CONTINUOUSLY REINFORCE YOUR KNOWLEDGE TO EXCEL IN YOUR STUDIES. WHETHER FOR ACADEMIC PURPOSES OR PERSONAL ENRICHMENT, A THOROUGH UNDERSTANDING OF THE INTEGUMENTARY SYSTEM WILL SERVE YOU WELL IN YOUR ENDEAVORS.

FREQUENTLY ASKED QUESTIONS

WHAT ARE THE PRIMARY FUNCTIONS OF THE INTEGUMENTARY SYSTEM?

THE PRIMARY FUNCTIONS OF THE INTEGUMENTARY SYSTEM INCLUDE PROTECTION, REGULATION OF BODY TEMPERATURE, SENSORY PERCEPTION, AND SYNTHESIS OF VITAMIN D.

WHAT ARE THE MAIN LAYERS OF THE SKIN?

THE MAIN LAYERS OF THE SKIN ARE THE EPIDERMIS, DERMIS, AND SUBCUTANEOUS TISSUE (HYPODERMIS).

WHAT TYPE OF CELLS ARE PRIMARILY FOUND IN THE EPIDERMIS?

THE EPIDERMIS PRIMARILY CONTAINS KERATINOCYTES, BUT ALSO INCLUDES MELANOCYTES, LANGERHANS CELLS, AND MERKEL CELLS.

HOW DOES THE INTEGUMENTARY SYSTEM CONTRIBUTE TO HOMEOSTASIS?

THE INTEGUMENTARY SYSTEM HELPS MAINTAIN HOMEOSTASIS BY REGULATING TEMPERATURE THROUGH SWEAT PRODUCTION AND BLOOD FLOW, AS WELL AS PROTECTING AGAINST ENVIRONMENTAL HAZARDS.

WHAT IS THE ROLE OF MELANIN IN THE SKIN?

MELANIN PROVIDES PIGMENTATION TO THE SKIN AND HELPS PROTECT AGAINST ULTRAVIOLET (UV) RADIATION BY ABSORBING AND DISSIPATING UV RAYS.

WHAT ARE THE COMMON DISORDERS OF THE INTEGUMENTARY SYSTEM?

COMMON DISORDERS INCLUDE ACNE, ECZEMA, PSORIASIS, DERMATITIS, AND SKIN CANCER.

WHAT IS THE SIGNIFICANCE OF SEBACEOUS GLANDS IN THE SKIN?

SEBACEOUS GLANDS PRODUCE SEBUM, WHICH LUBRICATES THE SKIN AND HAIR, AND HELPS PREVENT BACTERIAL GROWTH.

HOW DOES THE INTEGUMENTARY SYSTEM INTERACT WITH THE IMMUNE SYSTEM?

THE INTEGUMENTARY SYSTEM ACTS AS A BARRIER TO PATHOGENS AND CONTAINS IMMUNE CELLS, SUCH AS LANGERHANS CELLS, WHICH HELP DETECT AND FIGHT INFECTIONS.

WHAT ARE THE DIFFERENCES BETWEEN FIRST, SECOND, AND THIRD-DEGREE BURNS?

FIRST-DEGREE BURNS AFFECT ONLY THE EPIDERMIS (REDNESS AND PAIN), SECOND-DEGREE BURNS AFFECT BOTH THE EPIDERMIS AND DERMIS (BLISTERS AND SWELLING), AND THIRD-DEGREE BURNS EXTEND THROUGH THE SKIN TO UNDERLYING TISSUES (CHARRED OR WHITE SKIN, NUMBNESS).

Find other PDF article:

<https://soc.up.edu.ph/41-buzz/pdf?dataid=tVr39-9174&title=milwaukee-bucks-logo-history.pdf>

Integumentary System Study Guide Answer Sheet

22 Best Financial planners in Brighton East VIC with Reviews ...

Here is the definitive list of Brighton East's Financial Planners as rated by the Brighton East, VIC community. See who made the cut and receive up to 3 free quotes today.

Financial Planners in Brighton East, Victoria - Financial Advice ...

Find a Planner in Brighton East, Victoria. Begin your journey to financial freedom today.

The Best Financial Planners and Advisors in Perth in 2025

We've carefully selected the top 10 financial planners in Perth—trusted professionals with proven experience to help you build, grow, and protect your financial future.

THE BEST 10 Financial Planners in Brighton East, Victoria

By providing expert financial advice and ongoing support, we help our clients make the right decisions so they can achieve their financial goals and life plans.

Brighton Financial Advisors & Planners, Stockbrokers & SMSF ...

Individuals, families and not for profits seek our assistance for comprehensive and personalised financial advice.

Financial Planner Brighton - Yield Financial Planning

A dynamic financial planner Brighton, we are experts in wealth creation and retirement planning. Many of our Brighton clients are business owners and professionals and we are best placed to ...

Financial Adviser Brighton And Somerton Park | Coastal Advice ...

Welcome to Coastal Advice Group Brighton and Somerton Park, where we believe in empowering individuals to maximise their lives. While everyone's definition of happiness and success is ...

The 10 Best Financial Planners and Advisors in Perth

Our list of the Top 10 Best Financial Advisor and Planners in Perth will help you make an informed decision. Find your ideal adviser today.

Financial Advisor in Brighton - SMART Financial Advisory

Our certified financial planners and advisors in Brighton have in-depth knowledge and vast industry experience. We've successfully guided countless individuals and families toward ...

Breakwater Financial Planning | Financial Planner in Brighton, Victoria

We offer the option of ongoing reporting and advisory services and will be a source of trusted and consistent advice over the long term. Breakwater Financial Planning is a boutique, privately ...

Financial Advisor Brighton - SetchGroup

Contact us today to schedule a no-obligation consultation with our expert Brighton financial planner team. We'll develop a plan to help you achieve your financial aspirations.

Financial Advisor Brighton | 360 Financial Strategists

As committed financial experts in the Brighton area, we remain at your disposal for all your money related needs. Call us on 03 9427 0855 or simply contact us using our contact form and one of ...

Planners in Brighton - Financial Advice Association Australia

Find a Planner in Brighton, Victoria. Begin your journey to financial freedom today.

Private Wealth Management Perth | Boutique Advisers

We've been recognised as one of the best financial advisors Perth has to offer, and our team of dedicated Perth financial planners consistently ranks among the top wealth management firms ...

25 Best Financial Planners in Brighton VIC with Reviews

Here is the definitive list of Brighton's Financial Planners as rated by the Brighton, VIC community. See who made the cut and receive up to 3 free quotes today.

Evolve Financial Planning | Financial Advisors & Planners Perth

Jul 21, 2025 · Achieving long-term financial success starts with a conversation — and the right guidance from an experienced financial advisor. Online and in-person appointments available.

The Best Financial Advisors in Perth, Australia | WhoDoYou

Sep 11, 2014 · See the most recommended financial advisors in Perth, Australia. Honest opinions shared by friends and neighbors. Want to find out who they refer?

Financial Pathfinders

At home in Perth, Western Australia our advisers are dedicated to the needs of our local, interstate and international clients covering every aspect of personal financial advice and ...

Viridian Advisory Perth - Viridian Advisory

We believe that understanding complex financial matters can brighten your life, no matter who you are or where you stand financially. So, whether you're just starting out or already well on your ...

25 Best Financial Planners in Perth WA with Reviews

Here is the definitive list of Perth's Financial Planners as rated by the Perth, WA community. See who made the cut and receive up to 3 free quotes today. Read real life customer reviews of ...

Australia - Wikipedia

Australia, officially the Commonwealth of Australia, is a country comprising the mainland of the Australian continent, the island of Tasmania and numerous smaller islands. [N 6] It has a total ...

Social Security Maximum Taxable Earnings - Financial Ducks In ...

Here in the Midwest, "getting your ducks in a row" implies organization, which is one of the outcomes of having a better understanding of your financial life. I hope you find the answers you're looking for among the articles here, and perhaps a smile.

Historical FICA Tax Information - Milefoot

Historical FICA Tax Information Social Security and Medicare taxes are based on gross earnings of each employee each year. Self-employment taxes are based on net income of the self-employed person each year.

2016 Social Security Changes

Monthly Social Security and Supplemental Security Income (SSI) benefits will not automatically increase in 2016 as there was no increase in the Consumer Price Index (CPI-W) from the third quarter of 2014 to the third quarter of 2015.

2016 Social Security and Medicare Tax Withholding Rates and Limits

For 2016, the maximum limit on earnings for withholding of Social Security (Old-Age, Survivors, and Disability Insurance) Tax remains \$118,500.00. The Social Security Tax Rate remains at ...

SOCIAL SECURITY (FICA) AND SDI RATES FOR 2016

Below are the FICA and State Disability Insurance (SDI) rates for 2016. The total FICA tax rate is 7.65% for employees and total FICA tax rate is 7.65% for employers. FICA is made up of two parts: OASDI (Old Age Survivor Disability Insurance) and HI (Hospital Insurance), which is ...

Historical Social Security Tax Rates, 1937 to 2022 [1]

Historical Social Security Tax Rates, 1937 to 2022 [1] ... ate refers to the combined rate for employers and employees. [2] OASDI refe s to the "Old-Age, Survivors, and Disability Insurance" p [3] HI refers to Medicare's "Hospital Insurance" program.

Here's What You'll Pay for Social Security and Medicare Tax in 2016

May 23, 2016 · For 2016, your employer will collect Social Security taxes at a rate of 6.2% on the first \$118,500 of your work earnings. That means that regardless of how much money you make, the amount you...

2016 Publication 15-A - Internal Revenue Service

The social security tax rate is 6.2% each for the employee and employer, unchanged from 2015. The social security wage base limit is \$118,500, unchanged from 2015.

Social Security Wage Base, FICA Tax Rates Unchanged For 2016

Oct 19, 2015 · Specifically, the Social Security and Medicare (FICA) tax rates will not change for 2016. Employers and employees will each continue to pay the Social Security tax rate of 6.2% on all wages up to the \$118,500 wage base.

FICA & SECA Tax Rates

In certain years, the effective rate paid by employees, employers, and/or self-employed workers was less than the rate received by the trust funds, with the difference covered by general revenue. See the footnotes for details.

Unlock your understanding of the integumentary system with our comprehensive study guide answer sheet. Learn more and ace your exams today!

[Back to Home](#)