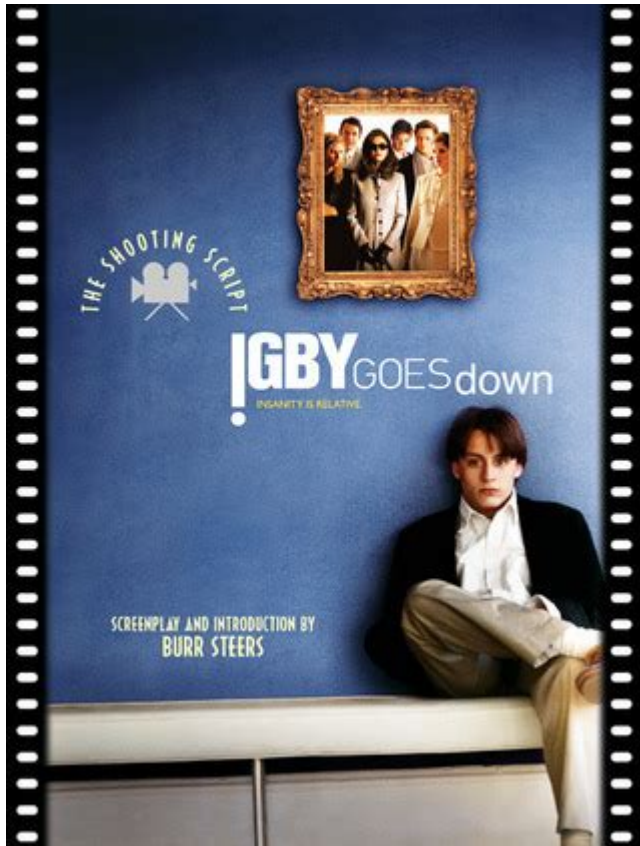


Igby Goes Down The Shooting Script



Igby Goes Down is a film that has captured the attention of audiences and critics alike since its release in 2002. Directed by Burr Steers and based on a screenplay by Steers and the film's star, Kieran Culkin, "Igby Goes Down" delves into the complexities of adolescence and the struggles of growing up in a dysfunctional family. This article examines the shooting script of "Igby Goes Down," exploring its themes, character development, and the overall narrative structure.

Overview of Igby Goes Down

"Igby Goes Down" tells the story of Igby Slocumb, a disaffected teenager living in New York City. The narrative follows Igby as he navigates the tumultuous waters of his family life, friendships, and his own identity. The film is notable for its sharp wit, unique characters, and its exploration of themes surrounding privilege, mental health, and rebellion.

The film features a strong cast, including Kieran Culkin as Igby, Susan Sarandon as his mother, and Ryan Phillippe as a charismatic and troubled character named D.H. The screenplay combines humor and poignancy, making it a resonant coming-of-age story.

The Shooting Script: Structure and Style

The shooting script of "Igby Goes Down" is a testament to the film's clever writing and character-driven storytelling. Analyzing the script reveals the distinct narrative style and structural choices that contribute to the film's overall impact.

Act Structure

The screenplay is divided into three acts, each marking a significant phase in Igby's journey:

1. Act One: Introduction of Characters and Conflict

- The story begins with an introduction to Igby and his dysfunctional family. The audience is quickly made aware of the strained relationships between Igby, his mother, and his brother. This act sets the stage for the conflict and establishes the primary themes of rebellion and disenchantment with privilege.

2. Act Two: Escalation of Conflict

- In the second act, Igby's struggles intensify. He grapples with his mental health, develops relationships outside of his family, and begins to question his identity. This act includes critical moments that build tension and deepen the character dynamics.

3. Act Three: Resolution and Reflection

- The final act sees Igby confronting the consequences of his choices. It culminates in a resolution that is both poignant and reflective, leaving the audience with a sense of closure while still pondering the complexities of the characters' lives.

Character Development

The depth of character development in "Igby Goes Down" is one of its standout features, underscored by the screenplay's attention to dialogue and internal monologue. Each character serves a purpose in illustrating the film's themes.

- Igby Slocumb (Kieran Culkin): The protagonist's journey is marked by his cynicism and desire for freedom. The script effectively captures his inner turmoil, showcasing both his rebellious spirit and vulnerability.
- Sookie Slocumb (Susan Sarandon): Igby's mother embodies the complexities of parental relationships. Her character provides insight into the impact of family dysfunction on mental health and personal identity.
- D.H. (Ryan Phillippe): D.H. serves as a foil to Igby, representing a different approach to dealing with privilege and pressure. Their interactions highlight Igby's struggle to find his own path.

Thematic Exploration

The screenplay of "Igby Goes Down" masterfully weaves several thematic elements throughout the narrative. Here are the prominent themes:

1. Privilege and Disillusionment

The film critiques the lives of the privileged elite, exploring how wealth can create a facade of happiness that ultimately leads to disillusionment. Characters grapple with the expectations placed upon them by their social status, and Igby's rebellion against these norms serves as a central conflict.

2. Mental Health

Mental health is a recurring theme throughout the film. Igby's struggles with depression and anxiety are depicted with raw honesty, reflecting the challenges faced by many adolescents. The screenplay addresses how familial relationships can exacerbate mental health issues, providing a realistic portrayal of the impact of these struggles.

3. Identity and Self-Discovery

As Igby navigates his turbulent life, he embarks on a journey of self-discovery. The screenplay captures his search for identity, emphasizing the importance of personal growth and the challenges of finding one's place in a world that often feels confining.

Dialogue and Wit

The dialogue in "Igby Goes Down" is sharp, witty, and often laced with humor. The screenplay utilizes clever banter and incisive observations to convey character dynamics and thematic depth. The use of humor serves to lighten the heavier themes, making the film more accessible while still provoking thought.

Notable Quotes

Several quotes from the screenplay have become iconic, reflecting the film's tone and thematic concerns:

- "You know, I think that I'm going to be a writer. I'll be a writer, and I'll write about how I was raised by monsters."
- "I'm not going to just sit around and wait for life to happen to me."

These quotes exemplify Igby's defiance and his struggle against the expectations of his family and society.

Impact and Legacy

The shooting script of "Igby Goes Down" has left a lasting impact on the landscape of independent cinema. Its exploration of complex themes through

relatable characters resonated with audiences and continues to be relevant today.

Cult Following

Since its release, "Igby Goes Down" has garnered a cult following, with fans praising its unique blend of humor and drama. The film's portrayal of teenage angst and rebellion has made it a touchstone for many who have experienced similar struggles.

Influence on Future Filmmakers

The screenplay has also influenced a new generation of filmmakers, showcasing the power of character-driven stories and the importance of addressing mental health issues in cinema. Its legacy can be seen in contemporary films that tackle similar themes with honesty and wit.

Conclusion

In conclusion, the shooting script of "Igby Goes Down" is a rich text that offers insights into the complexities of growing up in a privileged yet dysfunctional environment. Through its exploration of themes such as privilege, mental health, and identity, the screenplay remains a significant work in the realm of independent film. The memorable characters and sharp dialogue ensure that "Igby Goes Down" continues to resonate with audiences, solidifying its place as a modern classic in the coming-of-age genre.

Frequently Asked Questions

What is the central theme of 'Igby Goes Down' as depicted in the shooting script?

The central theme of 'Igby Goes Down' revolves around the struggles of adolescence, identity, and the impact of familial relationships on personal development.

How does the shooting script of 'Igby Goes Down' portray the character of Igby?

The shooting script portrays Igby as a disillusioned and rebellious teenager, grappling with his privileged upbringing while seeking authenticity and purpose in a world he finds superficial.

What stylistic elements are notable in the shooting script of 'Igby Goes Down'?

The shooting script features sharp, witty dialogue, a nonlinear narrative structure, and a blend of dark humor with poignant emotional moments,

creating a unique storytelling style.

How does the setting influence the narrative in 'Igby Goes Down'?

The setting, primarily in New York City, serves as a backdrop for Igby's existential crises, highlighting the contrast between his affluent lifestyle and his internal struggles for meaning.

What role do secondary characters play in Igby's journey as outlined in the shooting script?

Secondary characters, such as Igby's family and friends, serve to challenge and reflect Igby's perspectives, contributing to his growth and understanding of his own identity and desires.

In what ways does the shooting script address mental health issues?

The shooting script addresses mental health issues through Igby's experiences with anxiety and depression, as well as his coping mechanisms and the dysfunctional dynamics within his family.

What is the significance of the ending in 'Igby Goes Down' as per the shooting script?

The ending signifies a turning point for Igby, suggesting a glimmer of hope and self-acceptance despite the chaos he faces, leaving audiences to ponder the complexities of growing up.

How does 'Igby Goes Down' reflect societal issues through its characters and plot according to the shooting script?

The film reflects societal issues such as privilege, mental illness, and the search for genuine connections, using Igby's interactions and conflicts to critique the superficial nature of upper-class society.

Find other PDF article:

<https://soc.up.edu.ph/15-clip/Book?ID=Zrt43-1954&title=crane-flow-of-fluids-technical-paper-410.pdf>

[Igby Goes Down The Shooting Script](#)

IGBT -

IGBT IGBT ...

IGBT -

1 p emitter (IGBT) Vcesat ...

IGBT -

IGBT 100A IGBT ...

IGBT -

Aug 1, 2018 · 8 IGBT ...

IGBT ...

H-FS IGBT 2017 ...

MOS -

MOS PN IGBT PNP ...

IGBT -

IGBT MOSFET BVDSS ...

RC-IGBT -

RC-IGBT Insulated Gate Bipolar Transistor RC Resistor-Capacitor IGBT ...

~**E06** -

Apr 29, 2023 · ~E06

-

...

IGBT -

IGBT ...

IGBT -

1 p emitter (IGBT) Vcesat ...

IGBT -

IGBT 100A IGBT ...

IGBT -

Aug 1, 2018 · 8 IGBT ...

IGBT ...

H-FS IGBT 2017 ...

...

MOS -

MOS PNP IGBT PNP IGBT ...

IGBT -

IGBT MOSFET BVDSS ...

RC-IGBT -

RC-IGBT IGBT Insulated Gate Bipolar Transistor RC Resistor-Capacitor IGBT ...

~E06? -

Apr 29, 2023 · ~E06?

-

...

Explore the 'Igby Goes Down' shooting script in detail. Discover how this cult classic was crafted and what makes it a unique cinematic experience. Learn more!

[Back to Home](#)