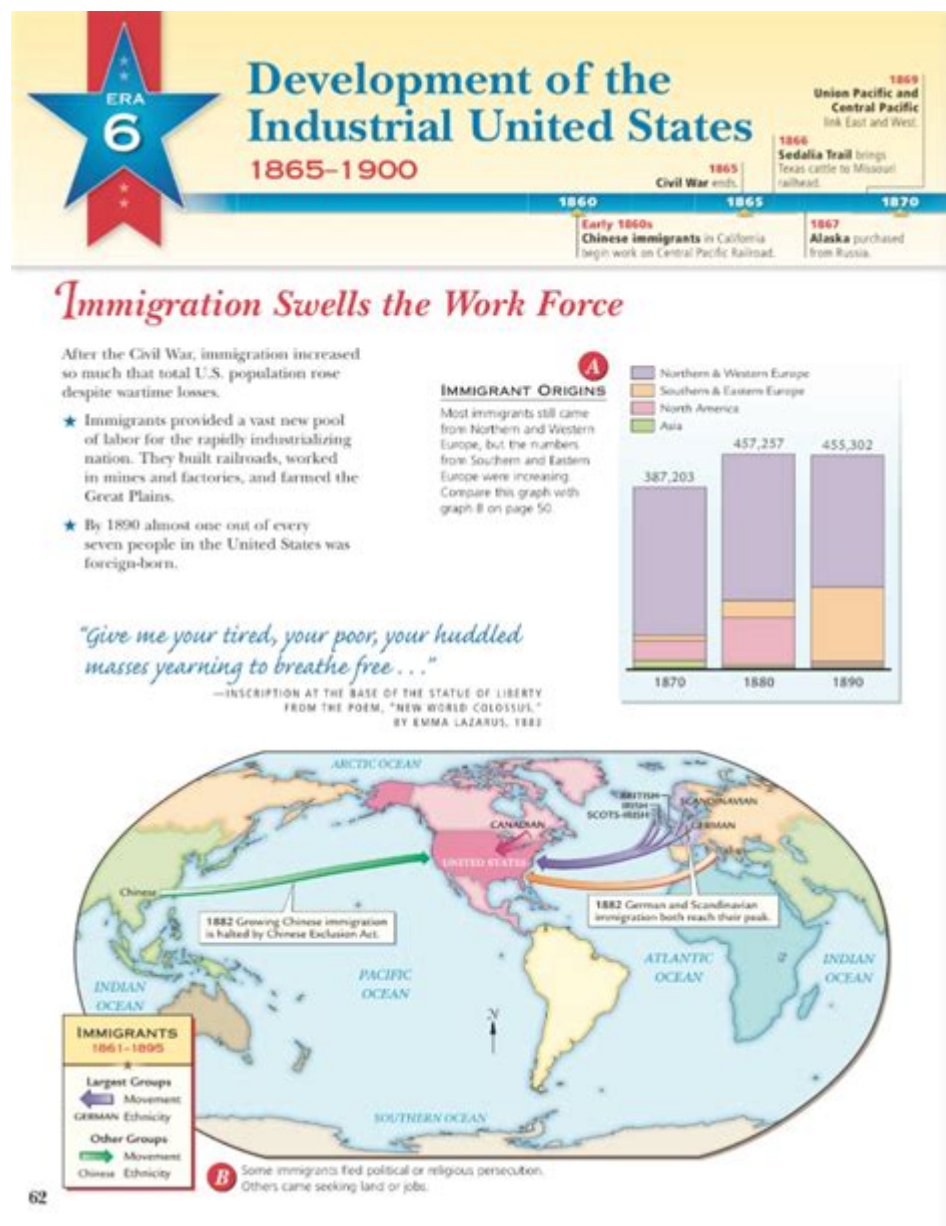


# Immigration Swells The Workforce Answer Key



Immigration swells the workforce in many ways, contributing significantly to economic growth and diversification. As countries around the world grapple with labor shortages due to aging populations and declining birth rates, immigration has emerged as a vital solution to bolster the workforce. This article explores the multifaceted impact of immigration on the workforce, examining economic benefits, social dynamics, challenges, and policy implications.

## Understanding the Workforce Dynamics

# **The Role of Immigration in Workforce Growth**

Immigration plays a crucial role in expanding the labor force. Here are some key points to understand:

1. **Filling Labor Gaps:** Immigrants often take jobs that are difficult to fill, especially in industries such as agriculture, construction, and hospitality. These sectors frequently struggle to attract local workers, leading to a reliance on immigrant labor.
2. **Enhancing Skills and Diversity:** Immigrants bring diverse skills and experiences, enriching the workforce. This diversity fosters innovation and creativity, which are essential for competitive economies.
3. **Economic Contributions:** Immigrants contribute to the economy not only through their labor but also by paying taxes, consuming goods and services, and creating jobs. A study by the National Academy of Sciences found that immigrants contribute significantly to GDP growth.

## **Demographic Changes and Labor Shortages**

Countries facing demographic challenges, such as low birth rates and aging populations, are increasingly reliant on immigration to sustain their labor force. Several key trends include:

- **Aging Population:** Many developed nations are witnessing a significant increase in the elderly population, leading to a higher dependency ratio. This trend necessitates a larger working-age population to support economic stability.
- **Declining Birth Rates:** In several countries, sustained low birth rates have led to a shrinking workforce. Immigration is seen as a primary solution to counteract this decline.
- **Increasing Demand for Labor:** As economies recover from downturns, the demand for labor increases. Immigrants can quickly fill these roles, ensuring that businesses can operate efficiently.

## **The Economic Impact of Immigration**

### **Boosting Economic Growth**

The economic impact of immigration is profound and multifaceted. Here are several ways immigration boosts economic growth:

- **Job Creation:** Immigrants not only fill existing jobs but also create new ones. Entrepreneurs with immigrant backgrounds often start businesses that contribute to job creation and economic dynamism.
- **Increased Consumer Spending:** Immigrants contribute to local economies by spending on housing,

food, and services, which stimulates demand and encourages business growth.

- **Innovation and Entrepreneurship:** Immigrants are often more likely to start businesses than native-born citizens. According to the Kauffman Foundation, immigrants founded 25% of all new businesses in the United States in 2016.

## **Tax Contributions and Public Finances**

Immigrants contribute significantly to public finances through taxes. Some key points include:

- **Income Taxes:** Immigrants pay income taxes, which help fund vital public services such as education, healthcare, and infrastructure.

- **Social Security Contributions:** Many immigrants contribute to social security systems, helping support the benefits of retirees and other eligible citizens.

- **Economic Multiplier Effect:** The spending power of immigrants generates additional economic activity, leading to further job creation and tax revenues.

## **Social Dynamics and Cultural Enrichment**

### **Cultural Diversity and Community Building**

Immigration brings cultural diversity, which enriches societies in numerous ways:

- **Cultural Exchange:** Different cultures contribute to a vibrant social fabric, bringing new perspectives, traditions, and cuisines.

- **Community Development:** Immigrant communities often establish networks that provide support for new arrivals, fostering cohesion and integration.

- **Social Innovation:** Diverse groups can lead to innovative solutions to social challenges, enhancing problem-solving capacities within communities.

## **Addressing Misconceptions about Immigration**

Despite the numerous benefits, misconceptions about immigration persist. Key misunderstandings include:

- **Job Competition:** While some argue that immigrants take jobs from native-born workers, research shows that immigrants often complement rather than compete with local labor, filling gaps in the job market.

- Welfare Dependency: Many believe that immigrants are a burden on public resources. However, studies indicate that immigrants are less likely to use welfare services than native-born citizens.
- Cultural Threat: Fears of cultural dilution are common, yet evidence suggests that diversity can strengthen societal resilience and innovation.

## Challenges and Considerations

### Integration and Adaptation

While immigration swells the workforce, it also presents challenges related to integration:

- Language Barriers: Many immigrants face language challenges that can hinder their ability to fully participate in the workforce and society.
- Recognition of Qualifications: Immigrants may struggle to have their foreign qualifications recognized, limiting their employment opportunities despite having the necessary skills.
- Social Integration: Ensuring that immigrants integrate into their new communities can be challenging, requiring targeted policies and support systems.

### Policy Implications

Effective immigration policy is essential to maximizing the benefits of immigration while addressing challenges. Key considerations include:

- Pathways to Legal Status: Providing pathways for undocumented immigrants to gain legal status can enhance their contributions to the economy and society.
- Support for Integration: Programs that assist immigrants with language acquisition, job training, and cultural orientation can facilitate smoother integration.
- Balancing Security and Openness: Policymakers must balance national security concerns with the need for a robust and inclusive immigration system.

## Conclusion

In conclusion, immigration swells the workforce by filling labor gaps, boosting economic growth, and enriching cultural diversity. While challenges exist, the benefits of immigration are substantial, making it a critical component of sustainable economic development. As countries continue to face demographic shifts and labor shortages, embracing immigration through thoughtful policies can lead to a more prosperous and dynamic future. Addressing misconceptions and supporting integration will be key to harnessing the full potential of immigration in the workforce.

# Frequently Asked Questions

## **How does immigration contribute to workforce growth?**

Immigration introduces a diverse pool of talent, filling labor shortages and enhancing productivity in various industries, thereby contributing to workforce growth.

## **What are the economic benefits of immigration to the workforce?**

Economic benefits include increased innovation, higher GDP growth, and the creation of new jobs as immigrants often start their own businesses.

## **What demographic trends are influencing immigration and workforce dynamics?**

A declining birth rate in many countries is leading to an aging population, making immigration essential to maintain and grow the workforce.

## **How do immigrants impact wages in the labor market?**

While there are concerns about wage suppression, many studies show that immigrants often complement rather than compete with native workers, helping to raise overall productivity and wages.

## **What role do immigrant workers play in essential industries?**

Immigrant workers are vital in essential industries such as healthcare, agriculture, and construction, often filling critical roles that support economic stability and growth.

## **Can immigration reform help manage workforce needs?**

Yes, well-structured immigration reform can align labor supply with demand, ensuring that industries have access to the workers they need while addressing economic and social concerns.

## **What challenges do immigrants face in the workforce?**

Immigrants often face challenges such as language barriers, credential recognition, and discrimination, which can hinder their full participation in the workforce.

Find other PDF article:

<https://soc.up.edu.ph/46-rule/files?dataid=Aes06-2733&title=personal-ethics-and-business-ethics.pdf>

## **[Immigration Swells The Workforce Answer Key](#)**

Immigration - 移民

PR6 (SC) (PR) — 2. (SC) (PR) 21 ...

Immigrationmigration\_

Immigrationmigration 1 Immigration ( ) The character of this country has ...

Address line1Address line2\_

Add line 1: + + /Address line2: + + Address line1 ...

Why it's time to rethink migration - The World Economic Forum

Jun 16, 2023 · It is time to rethink migration. Over much of the world, birth rates are plunging and populations are ageing. This means that there will be fewer workers to support older people ...

U -

4. convert G:/fs:ntfs win10,win11 G U G,D 5. U NTFS ...

How immigration has changed the world - for the better

Immigration is good. And in the age of globalization, barriers to migration pose a threat to economic growth and sustainability. Free migration, like totally free trade, remains a utopian ...

20257 ...

20257 8 9400 8 Gen3 9200 ...

ā á â ã ä å ã ö ø ã ê ë é ě è ĭ í î ï ū ú ů ù ů ů ů ů ů ...

Aug 5, 2011 · ā á â ã ä å ã ö ø ã ê ë é ě è ĭ í î ï ū ú ů ù ů ů ů ů ů QQ 1 QQ 2 QQ ...

These 3 charts explain the complex history of US immigration

Feb 1, 2017 · Immigration to the US over the last century has come in waves and troughs. The 1900s saw significant arrivals as part of the so-called ‘third-wave’. Industrialization brought ...

2023 was a big year for cybercrime - The World Economic Forum

Jan 10, 2024 · 91% of business and cyber leaders surveyed believed geopolitical instability could drive a far-reaching cyber event in the next two years.

Immigration - 移民

PR6 (SC) (PR) — 2. (SC) (PR) 21 ...

Immigrationmigration\_

Immigrationmigration 1 Immigration ( ) The character of this country has ...

Address line1Address line2\_

Add line 1: + + /Address line2: + + Address line1 ...

