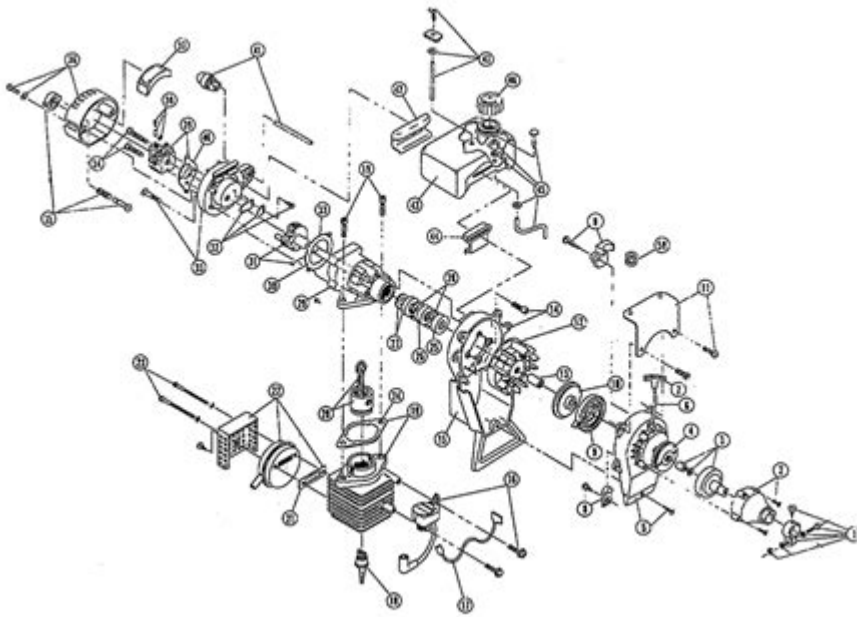


Idc Model 400 1 Cultivator Service Manual



IDC Model 400 1 Cultivator Service Manual

The IDC Model 400 1 cultivator is a versatile piece of agricultural equipment designed to enhance soil preparation and crop cultivation. As with any mechanical equipment, regular maintenance and proper servicing are crucial to ensure optimal performance and longevity. This article provides a comprehensive overview of the IDC Model 400 1 cultivator service manual, detailing essential maintenance procedures, troubleshooting tips, and safety measures.

Overview of the IDC Model 400 1 Cultivator

The IDC Model 400 1 cultivator is engineered to meet the demands of modern farming. It is characterized by its robust construction and efficient design, making it suitable for a variety of soil types and farming applications. Key features include:

- Adjustable tines for different soil conditions

- Durable frame construction for enhanced stability
- Easy attachment to tractors and other farming equipment
- Compact design for maneuverability in tight spaces

Understanding the functionality and features of the IDC Model 400 1 cultivator is vital for effective operation and maintenance.

Service Manual Structure

The service manual for the IDC Model 400 1 cultivator is structured to provide users with clear, step-by-step instructions for maintenance and repair. It typically includes the following sections:

1. Introduction

This section provides an overview of the cultivator, its specifications, and the importance of regular maintenance. It may also include safety warnings and disclaimers.

2. Safety Information

Safety is paramount when operating and servicing the cultivator. This section outlines essential safety precautions, including:

- Always wear appropriate personal protective equipment (PPE).
- Ensure the cultivator is turned off and disconnected from the power source before performing maintenance.
- Keep hands and loose clothing away from moving parts.

3. Maintenance Schedule

A proactive maintenance schedule is crucial for keeping the IDC Model 400 1 cultivator in optimal working condition. The manual typically includes a recommended maintenance schedule that outlines daily, weekly, monthly, and annual tasks. Here is a sample maintenance checklist:

- Daily:
 - Inspect for loose or damaged parts.
 - Clean tines and frame from dirt and debris.
 - Lubricate moving parts as necessary.

- Weekly:
 - Check and tighten all bolts and nuts.
 - Inspect and replace worn tines as needed.
 - Ensure all safety guards are in place.

- Monthly:
 - Grease bearings and joints.
 - Check hydraulic fluid levels and top up if necessary.
 - Inspect hoses for signs of wear or leaks.

- Annually:
 - Conduct a thorough inspection of the entire unit.
 - Replace oil and filters as specified.
 - Perform a test run to ensure all functions operate smoothly.

4. Operating Instructions

Proper operation is key to maximizing the effectiveness of the IDC Model 400 1 cultivator. This section

includes:

- Step-by-step instructions for attaching the cultivator to a tractor.
- Guidelines for adjusting the depth and angle of the tines.
- Recommendations for optimal speed and settings based on soil conditions.

5. Troubleshooting Guide

Despite careful maintenance, issues may arise during operation. The troubleshooting guide offers solutions to common problems, such as:

- Cultivator Not Operating:
 - Check for power supply issues.
 - Inspect fuses and electrical connections.
- Poor Tine Performance:
 - Ensure tines are sharp and free of debris.
 - Adjust the depth to match soil conditions.
- Excessive Vibrations:
 - Check for loose bolts or damaged components.
 - Ensure the frame is properly aligned.

For each issue, the manual provides diagnostic steps and potential solutions to help users resolve problems quickly.

6. Parts List

A detailed parts list is essential for any maintenance and repair work. This section includes:

- A breakdown of all components of the IDC Model 400 1 cultivator.
- OEM part numbers for easy ordering.
- Diagrams to help users identify parts quickly.

7. Repair Procedures

This section covers specific repair procedures, including:

- Replacing worn tines:

1. Remove the retaining bolts.
2. Replace the tine and reattach the bolts securely.

- Repairing hydraulic systems:

1. Identify leaks and replace faulty hoses.
2. Bleed the system to remove air pockets.

- Electrical repairs:

1. Inspect wiring for damage.
2. Replace fuses and test electrical connections.

Detailed illustrations accompany these procedures, making it easier for users to follow along.

Importance of Regular Maintenance

Regular maintenance of the IDC Model 400 1 cultivator is vital for several reasons:

- Performance: Well-maintained equipment operates more efficiently, leading to better crop yields and reduced operational costs.
- Longevity: Routine checks and repairs extend the lifespan of the cultivator, delaying the need for

costly replacements.

- Safety: Proper maintenance reduces the risk of accidents caused by mechanical failure, protecting operators and other personnel.

Conclusion

The IDC Model 400 1 cultivator service manual is an invaluable resource for anyone using this equipment. By following the guidelines for maintenance, operation, troubleshooting, and repairs, users can ensure their cultivator remains in optimal condition for years to come. Investing time in understanding and implementing the practices outlined in the manual will ultimately yield better agricultural results and enhance the overall efficiency of farming operations. Regular servicing not only improves performance but also guarantees safety, making it an essential aspect of using the IDC Model 400 1 cultivator.

Frequently Asked Questions

What is the purpose of the IDC Model 400 1 cultivator service manual?

The IDC Model 400 1 cultivator service manual provides detailed instructions for the maintenance, operation, and repair of the cultivator, ensuring optimal performance and longevity.

Where can I find the IDC Model 400 1 cultivator service manual?

The service manual for the IDC Model 400 1 cultivator can typically be found on the manufacturer's website, through authorized dealers, or in agricultural equipment libraries.

What are the key maintenance tips outlined in the IDC Model 400 1 cultivator service manual?

Key maintenance tips include regular inspection of the tines, lubrication of moving parts, checking tire pressure, and ensuring all bolts and screws are tightened.

Does the IDC Model 400 1 cultivator service manual include troubleshooting guides?

Yes, the IDC Model 400 1 cultivator service manual includes troubleshooting guides to help users diagnose and fix common issues that may arise during operation.

Is there a digital version of the IDC Model 400 1 cultivator service manual available?

Yes, many manufacturers offer a digital version of the IDC Model 400 1 cultivator service manual, which can be downloaded from their official website or accessed through online agricultural equipment resources.

Find other PDF article:
<https://soc.up.edu.ph/10-plan/pdf?docid=bxM80-2992&title=business-of-the-21-century.pdf>

[Idc Model 400 1 Cultivator Service Manual](#)

CDNIDC ...
IDC Cloud 3
IDC ...

2024IDC65 -
Jun 3, 2024 · IDC-IDC.pdf IDC-IDC MarketScape
2023~2024.pdf

IDC -
IDC's analysis and insight helps IT professionals, business executives, and the investment community to make fact-based technology decisions and to achieve their key business objectives.

Founded in 1964, IDC is a wholly-owned subsidiary of International Data Group (IDG), the world's leading tech media, data and marketing services company.

Internet Data Center (IDC) 是国际数据集团 (IDG) 旗下的全资子公司，专注于为全球企业提供互联网数据中心 (IDC) 服务。IDC 提供包括服务器托管、网络接入、云计算、大数据存储及分析等在内的全方位解决方案，助力企业数字化转型。...

IDC 是国际数据集团 (IDG) 旗下的全资子公司，专注于为全球企业提供互联网数据中心 (IDC) 服务。IDC 提供包括服务器托管、网络接入、云计算、大数据存储及分析等在内的全方位解决方案，助力企业数字化转型。...

IDC 是国际数据集团 (IDG) 旗下的全资子公司，专注于为全球企业提供互联网数据中心 (IDC) 服务。IDC 提供包括服务器托管、网络接入、云计算、大数据存储及分析等在内的全方位解决方案，助力企业数字化转型。...

unicode (IDC) 是国际数据集团 (IDG) 旗下的全资子公司，专注于为全球企业提供互联网数据中心 (IDC) 服务。IDC 提供包括服务器托管、网络接入、云计算、大数据存储及分析等在内的全方位解决方案，助力企业数字化转型。...

是国际数据集团 (IDG) 旗下的全资子公司，专注于为全球企业提供互联网数据中心 (IDC) 服务。IDC 提供包括服务器托管、网络接入、云计算、大数据存储及分析等在内的全方位解决方案，助力企业数字化转型。...

2025 IDC 110 是国际数据集团 (IDG) 旗下的全资子公司，专注于为全球企业提供互联网数据中心 (IDC) 服务。IDC 提供包括服务器托管、网络接入、云计算、大数据存储及分析等在内的全方位解决方案，助力企业数字化转型。...

IDC 是国际数据集团 (IDG) 旗下的全资子公司，专注于为全球企业提供互联网数据中心 (IDC) 服务。IDC 提供包括服务器托管、网络接入、云计算、大数据存储及分析等在内的全方位解决方案，助力企业数字化转型。...

CDN IDC 是国际数据集团 (IDG) 旗下的全资子公司，专注于为全球企业提供互联网数据中心 (IDC) 服务。IDC 提供包括服务器托管、网络接入、云计算、大数据存储及分析等在内的全方位解决方案，助力企业数字化转型。...

2024 IDC 65 是国际数据集团 (IDG) 旗下的全资子公司，专注于为全球企业提供互联网数据中心 (IDC) 服务。IDC 提供包括服务器托管、网络接入、云计算、大数据存储及分析等在内的全方位解决方案，助力企业数字化转型。...

IDC 是国际数据集团 (IDG) 旗下的全资子公司，专注于为全球企业提供互联网数据中心 (IDC) 服务。IDC 提供包括服务器托管、网络接入、云计算、大数据存储及分析等在内的全方位解决方案，助力企业数字化转型。...

Internet Data Center (IDC) 是国际数据集团 (IDG) 旗下的全资子公司，专注于为全球企业提供互联网数据中心 (IDC) 服务。IDC 提供包括服务器托管、网络接入、云计算、大数据存储及分析等在内的全方位解决方案，助力企业数字化转型。...

IDC 是国际数据集团 (IDG) 旗下的全资子公司，专注于为全球企业提供互联网数据中心 (IDC) 服务。IDC 提供包括服务器托管、网络接入、云计算、大数据存储及分析等在内的全方位解决方案，助力企业数字化转型。...

idc -

1u ip 5000 2u ip 6000 1u 4000 2u 5000 ip ...

unicode (IDC) ...

Apr 16, 2017 · unicode (IDC) ...

-

1 cninfo.com.cn/new/index ...

2025 IDC 110 —

Jun 25, 2025 · IDC-2025.pdf -IDC AIDC.pdf -IDC ...

IDC ...

Nov 19, 2024 · ...

Unlock the full potential of your IDC Model 400-1 cultivator with our comprehensive service manual. Learn more about maintenance tips and troubleshooting today!

[Back to Home](#)