

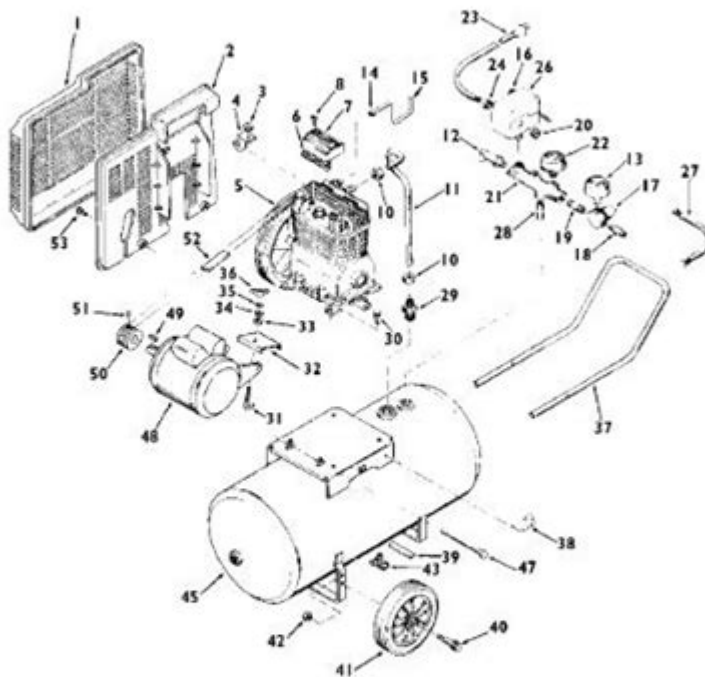
Illustrated Parts Manual

For replacement parts contact: Allparts Equipment and Accessories Inc.

1-877-475-5660

www.allpartsinc.com

L2512



Oil Lube Port/Gas Repair Manual

1

September, 2000
TAB: 2.5 HP Oil Lube Portable

For replacement parts contact: Allparts Equipment and Accessories Inc.

1-877-475-5660

www.allpartsinc.com

Illustrated parts manual is an essential tool for professionals across various industries, providing detailed visual representations and descriptions of components found in machinery, vehicles, and equipment. These manuals are invaluable for technicians and engineers, enabling them to understand the intricacies of complex systems. In this article, we will explore the significance of illustrated parts manuals, their key components, benefits, and best practices for creating and utilizing them effectively.

What is an Illustrated Parts Manual?

An illustrated parts manual (IPM) is a comprehensive guide that contains visual diagrams, photographs, and part numbers for specific components of a machine or system. These manuals are designed to assist users in identifying, ordering, and replacing parts efficiently. They often include:

- Detailed illustrations or photographs of parts
- Part numbers and descriptions
- Assembly and disassembly instructions
- Maintenance guidelines

The Importance of Illustrated Parts Manuals

Illustrated parts manuals serve multiple critical functions in various industries:

1. Simplifying Complex Information

Complex machinery can be daunting to understand, especially for those who are not intimately familiar with its components. Illustrated parts manuals break down complex information into digestible visuals, making it easier for technicians to identify parts and understand their functions.

2. Streamlining Maintenance and Repairs

When machinery breaks down, time is of the essence. Illustrated parts manuals expedite the repair process by providing clear illustrations and part numbers that technicians can refer to quickly. This reduces downtime and helps maintain productivity.

3. Reducing Errors

A significant risk in maintenance and repair is misidentifying parts, which can lead to incorrect orders and additional costs. By using illustrated parts manuals, technicians can accurately identify components, reducing the likelihood of errors and ensuring that the correct parts are ordered and installed.

4. Supporting Training and Development

Illustrated parts manuals are excellent training resources for new technicians. They provide a visual reference that can help newcomers familiarize themselves with the equipment they will be working on. This can be especially beneficial for apprentices and interns who are learning the ropes.

Key Components of an Illustrated Parts Manual

An effective illustrated parts manual comprises several key elements that enhance its usability:

1. Detailed Images

High-quality images or diagrams that clearly depict each part are fundamental to an effective IPM. These illustrations should be large enough to show intricate details, allowing users to identify parts accurately.

2. Clear Descriptions and Specifications

Each part should be accompanied by a clear description, including specifications such as dimensions, materials, and applicable models. This information helps users understand the context and application of each component.

3. Part Numbers

Every component in the manual should have a unique part number. This is crucial for ordering replacements and ensuring compatibility with the respective machinery.

4. Assembly Instructions

Illustrated parts manuals should also include step-by-step assembly and disassembly instructions. These instructions guide technicians through the process, reducing the risk of mistakes and streamlining repairs.

5. Maintenance Tips

Including maintenance tips within the manual can help prolong the life of the equipment. These tips may cover routine checks, cleaning procedures, and recommended replacement intervals for specific parts.

Benefits of Using Illustrated Parts Manuals

The advantages of utilizing illustrated parts manuals extend beyond just the immediate convenience of identifying parts:

1. Cost Efficiency

By reducing errors and streamlining the ordering process, illustrated parts manuals can significantly cut costs associated with unnecessary orders and prolonged downtime.

2. Enhanced Customer Service

For businesses involved in sales or service, having accurate and comprehensive illustrated parts manuals can improve customer satisfaction. Customers appreciate quick, effective service, and having the right information readily available helps achieve this.

3. Improved Safety

Clear diagrams and instructions contribute to safer maintenance and repair practices. When technicians can easily identify parts and understand their functions, the likelihood of accidents due to misinterpretation decreases.

4. Increased Lifespan of Equipment

Proper maintenance, guided by illustrated parts manuals, can lead to a longer lifespan for machinery. Regularly following the maintenance suggestions outlined in the manual helps prevent premature wear and tear.

Best Practices for Creating an Illustrated Parts Manual

Creating a high-quality illustrated parts manual requires careful consideration and attention to detail. Here are some best practices to follow:

1. Use High-Quality Visuals

Invest in high-resolution images or professional diagrams to ensure clarity. The quality of illustrations directly impacts the usability of the manual.

2. Organize Content Logically

Structure the manual in a logical manner, grouping parts by categories or assembly locations. This organization makes it easier for users to navigate the manual.

3. Update Regularly

As machinery evolves and parts change, it's essential to keep the illustrated parts manual up to date. Regular revisions ensure that users have the most current information at their disposal.

4. Gather Feedback

After distributing the manual, seek feedback from users. Their insights can help identify areas for improvement and enhance the overall effectiveness of the manual.

5. Ensure Accessibility

Make the illustrated parts manual easily accessible, whether in print or digital format. Digital manuals can be particularly beneficial as they can be easily updated and shared.

Conclusion

In conclusion, an illustrated parts manual is a vital resource that offers numerous benefits in maintenance, repairs, and training across various industries. By simplifying complex information, reducing errors, and supporting efficient repair processes, these manuals significantly enhance operational efficiency. Businesses and technicians that prioritize the creation and use of high-quality illustrated parts manuals are likely to experience improved productivity, cost savings, and overall satisfaction. Investing in this essential tool not only supports the current needs of users but also contributes to long-term success in equipment management and maintenance.

Frequently Asked Questions

What is an illustrated parts manual?

An illustrated parts manual is a comprehensive guide that shows detailed images and diagrams of parts for equipment or machinery, along with part numbers and descriptions to assist in maintenance and repairs.

Why are illustrated parts manuals important for maintenance?

They help technicians and mechanics quickly identify parts, understand assembly and disassembly processes, and ensure the correct parts are ordered and installed, reducing downtime.

How can I obtain an illustrated parts manual for my

equipment?

You can typically obtain an illustrated parts manual from the manufacturer's website, through authorized dealers, or by request from customer service.

Are illustrated parts manuals available in digital format?

Yes, many manufacturers provide digital versions of illustrated parts manuals that can be downloaded or accessed online, making them easily searchable and portable.

Can I use an illustrated parts manual for troubleshooting?

While primarily designed for identifying parts, illustrated parts manuals can also assist in troubleshooting by providing insights into the assembly and function of components.

What should I look for in a good illustrated parts manual?

A good illustrated parts manual should include clear, high-quality images, detailed part descriptions, part numbers, and a logical layout that makes it easy to find and identify parts.

How often should I refer to an illustrated parts manual?

You should refer to an illustrated parts manual whenever performing maintenance, repairs, or part replacements to ensure accuracy and efficiency.

Are there any online resources for accessing illustrated parts manuals?

Yes, several websites and forums provide access to illustrated parts manuals for various equipment and machinery, often shared by users or provided by manufacturers.

Find other PDF article:

<https://soc.up.edu.ph/42-scope/Book?trackid=hZG56-6022&title=movement-assessment-battery-for-children.pdf>

Illustrated Parts Manual

Cheap Car Rentals

You'll be offered cheap prices to save big dollars with internationally renowned rental companies like Alamo Rent A Car, Enterprise, Sixt, Budget, Hertz, Avis, and Thrifty.

Discount car rental rates and rental car deals | Budget Car Rental

Budget offers reliable car rentals at low rates. Easily book a sedan, SUV, truck, or EV for your next trip. Get started today!

Cheap Car Rental, Price Match Guarantee - Rentalcars.com

Find the best rental prices on luxury, economy, and family rental cars with FREE amendments in over 60,000 locations worldwide, reserve online today!

Car Rentals: Find Cheap Car Rentals & Rental Car Deals - KAYAK

Whether you are looking for an airport car rental or just a cheap car rental near you, you can compare discount car rentals and find the best deals faster at KAYAK.

Car Rental with Great Rates & Service | Enterprise Rent-A-Car

Enjoy easy booking with thousands of airport and city locations near you. Lock in great rates when you book a rental car with Enterprise.

Find Cheap Car Rental Deals & Discount Car Rental Rates - Hotwire

Compare cheap car rental deals from top brand-name rental agencies for as low as \$8.99 / day.

Car Rental: Save More on Rental Cars, Vans & Trucks | Hertz

In airports around the world and rental car locations near you, get a great selection and price on rental cars, vans and trucks. Click to reserve your vehicle today.

Car Rental: Find Cheap Rental Car Deals | Expedia.ca

Search hundreds of cheap car rentals and deals. Make the most of your next trip with rental car deals.

Rental Cars - Low Price Finder | Costco Travel

Search, price, and compare rental cars with Costco Travel. Our Low Price Finder shops all the coupons, codes, discounts and deals and returns the lowest price based on your search criteria.

Rental Car Low Price Finder | Costco Travel

Unless otherwise noted, optional services such as airfare, airport transfers, shore excursions, land tour excursions, etc. are not included and are available for an additional cost. Enter your criteria ...

Barrio Santa cruz - Mapa - Sevilla, Andalucía, España - Mapcarta

Barrio Santa cruz está en Sevilla, Provincia de Sevilla, Andalucía. Mapcarta, el mapa abierto.

Santa Cruz (Sevilla) - Wikipedia, la enciclopedia libre

Santa Cruz es un barrio histórico de Sevilla (Andalucía, España) que se asienta en parte de la antigua judería de la ciudad. La judería ocupaba lo que hoy son los barrios de Santa Cruz, Santa ...

Mapa Sevilla Santa Cruz color - congreso.us.es

Camina despacio y disfruta aquí de un paseo por una de las calles más románticas de Sevilla para llegar a la plaza que da nombre al barrio, con su famosa Cruz de la Cerrajería en el centro, obra ...

Ruta Barrio de Santa Cruz | Turismo de la Provincia de Sevilla

Este barrio de Santa Cruz era una parte de la antigua judería de Sevilla. Empezamos la visita por el Patio de Banderas. Desde aquí parte la acodada calle Judería que nos introducirá de lleno en un ...

Descubre el encanto del Barrio Santa Cruz en Sevilla: Mapa, ...

Apr 18, 2025 · Para ayudarte a explorar el Barrio Santa Cruz, te recomendamos utilizar un mapa turístico de la zona. Esto te permitirá ubicar fácilmente los diferentes puntos de interés y ...

Santa cruz de Sevilla mapa - Barrio de santa cruz mapa de Sevilla ...

El Barrio de santa cruz de Sevilla mapa. Santa cruz mapa de Sevilla (Andalucía - España) para

imprimir. Santa cruz mapa de Sevilla (Andalucía - España) para descargar.

Santa Cruz - Mapa - Plaza - Sevilla, Andalucía, España

Santa Cruz es un barrio histórico de Sevilla que se asienta en parte de la antigua judería de la ciudad. La judería ocupaba lo que hoy son los barrios de Santa Cruz, Santa María la Blanca y el ...

18 imprescindibles del barrio de Santa Cruz - Sevilla Secreta

Aug 30, 2023 · Qué ver, qué hacer y dónde comer en el barrio de Santa Cruz, la judería de Sevilla y uno de las zonas más populares de la ciudad.

Análisis detallado del mapa del encantador Barrio Santa Cruz en Sevilla ...

Apr 24, 2025 · Puedes obtener un mapa detallado del barrio Santa Cruz en Sevilla a través de sitios web turísticos, aplicaciones de mapas o visitando la oficina de turismo local.

Barrio de Santa Cruz - Turismo Sevilla - ViaMichelin

Barrio de Santa Cruz - Sevilla: la opinión de la Guía Verde Michelin, información práctica, mapa y cálculo de ruta para tu viaje Sevilla

Unlock the secrets of efficient repairs with our illustrated parts manual. Dive in to explore detailed diagrams and guides. Learn more for hassle-free maintenance!

[Back to Home](#)