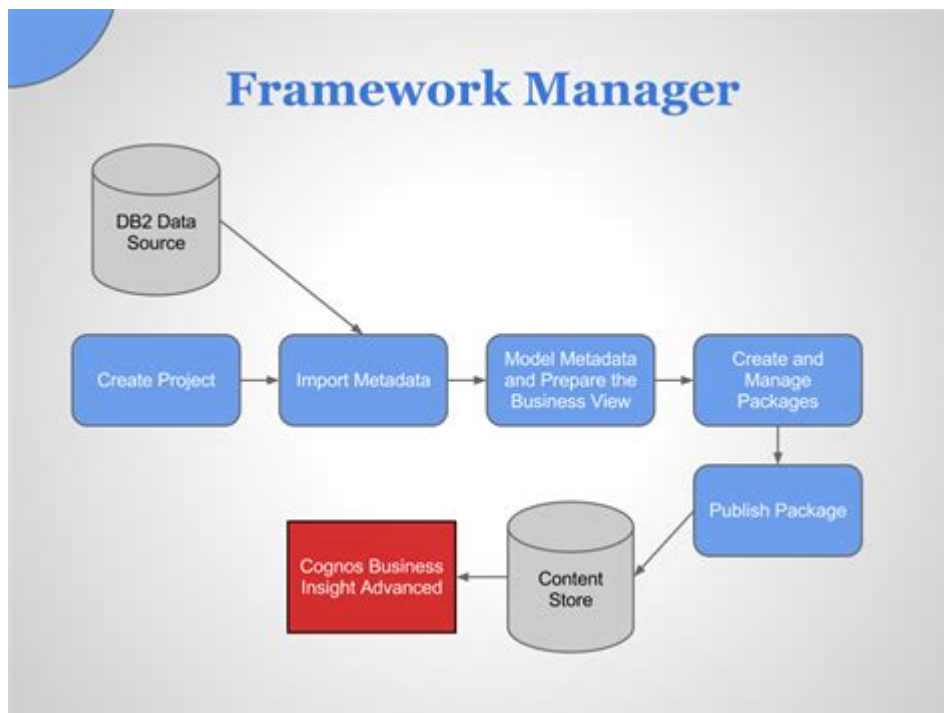


Ibm Cognos Framework Manager User Guide



IBM Cognos Framework Manager User Guide

IBM Cognos Framework Manager is a powerful tool that serves as a metadata modeling environment for IBM Cognos Business Intelligence. It allows users to create and manage metadata models, which are essential for generating reports and dashboards. This guide aims to provide a comprehensive overview of the functionalities, features, and best practices for using Framework Manager effectively.

Overview of IBM Cognos Framework Manager

Cognos Framework Manager is designed to simplify the process of building and maintaining a metadata model that serves as a bridge between data sources and end-users. This section will cover the key components, architecture, and workflow of the Framework Manager.

Key Components

1. **Projects:** Framework Manager operates within a project, which is a collection of metadata, including data source connections, queries, and data models.
2. **Data Sources:** Users can connect to various data sources such as relational databases, OLAP sources, and flat files.
3. **Models:** Models are the backbone of Framework Manager, representing the logical structure of the data.
4. **Queries:** Queries define how data is retrieved from the data sources and how it is presented to users.

5. Packages: Packages are created from models and serve as the interface for report authors to access and use data.

Architecture

Framework Manager employs a three-tier architecture that consists of:

- Data Tier: This layer includes the actual data sources such as databases, cubes, and data warehouses.
- Business Logic Tier: Framework Manager operates in this layer, allowing users to define the relationships, calculations, and rules for the data.
- Presentation Tier: This layer consists of Cognos Report Studio, Query Studio, and other tools that consume the models created in Framework Manager.

Getting Started with IBM Cognos Framework Manager

To begin using Framework Manager, follow these steps:

1. Installation: Ensure that IBM Cognos Analytics is installed on your machine or server. Framework Manager is usually part of the Cognos package.
2. Launching Framework Manager: Open the application from your Cognos installation directory. You may need administrative privileges to access certain features.
3. Creating a New Project:
 - Select 'File' > 'New' > 'Project'.
 - Name your project and specify the location for saving it.
 - Choose the appropriate model type based on your needs (i.e., relational or dimensional).

Creating a Metadata Model

Creating a metadata model in Framework Manager involves several steps. The following sections will guide you through the process.

Connecting to Data Sources

1. Data Source Connections:
 - Navigate to the 'Data Sources' tab.
 - Click on 'New Data Source' and select the type of source (e.g., relational).
 - Enter the connection details, including the database type, server name, and authentication credentials.
 - Test the connection to ensure it is successful.
2. Importing Metadata:
 - Once connected, right-click on the data source and select 'Import Metadata'.

- Choose the tables or views you want to include in your model.
- Specify any filters or transformations necessary for the imported data.

Defining Relationships

Establishing relationships between tables is crucial for a coherent data model.

- Creating Joins:
 - Drag and drop tables onto the model workspace.
 - Click on the 'Create Join' button to define relationships.
 - Choose the join type (inner, outer, etc.) and specify the join keys.
- Setting Cardinality:
 - Define the cardinality (one-to-one, one-to-many) for each relationship to improve query performance and accuracy.

Creating Calculations and Filters

1. Calculated Fields:
 - Right-click on the data item in the model and select 'Create Calculation'.
 - Use the expression editor to define calculations, such as aggregations or conditional expressions.
2. Filters:
 - To restrict data, you can apply filters at the model level.
 - Right-click on the data item and select 'Create Filter' to define the criteria that must be met for the data to be included in reports.

Publishing Packages

Once your model is complete, the next step is to publish it as a package, allowing report authors to access the data.

1. Creating a Package:
 - Right-click on the model and select 'Create Package'.
 - Define the package properties, including the name, description, and available data items.
 - Select the security settings to control access.
2. Publishing the Package:
 - After defining the package, navigate to the 'Publish' option.
 - Choose the Cognos content store where the package will be saved.
 - Click on 'Publish' to complete the process.

Best Practices for Using Framework Manager

To maximize the effectiveness of IBM Cognos Framework Manager, consider the following best practices:

1. Plan Your Model:

- Before creating a model, take the time to understand your data sources and the reporting requirements of end-users.

2. Use Naming Conventions:

- Consistent naming conventions for data items, calculations, and packages help maintain clarity and ease of use.

3. Optimize Performance:

- Regularly review and optimize your queries and calculations to ensure they perform well, especially with large datasets.

4. Document Your Work:

- Maintain thorough documentation for your models, including descriptions of calculations, relationships, and data sources, to facilitate future maintenance.

5. Test Extensively:

- Before releasing models and packages to end-users, conduct thorough testing to identify and rectify any issues.

Conclusion

IBM Cognos Framework Manager is a vital tool for organizations looking to leverage their data effectively. By following this user guide, you can create robust metadata models that facilitate insightful reporting and analysis. Whether you're a beginner or an experienced user, understanding the functionalities and best practices of Framework Manager will enhance your ability to deliver valuable business intelligence solutions. With careful planning, execution, and maintenance, Framework Manager can significantly improve data accessibility and reporting efficiency within your organization.

Frequently Asked Questions

What is IBM Cognos Framework Manager?

IBM Cognos Framework Manager is a metadata modeling tool that allows users to create and manage data models for reporting and analysis in the IBM Cognos Business Intelligence suite.

How do I start a new project in IBM Cognos Framework

Manager?

To start a new project, open IBM Cognos Framework Manager, select 'File' > 'New' > 'Project', and then follow the prompts to define your project settings.

What are the key components of a Framework Manager model?

The key components of a Framework Manager model include namespaces, data sources, queries, model packages, and security settings.

How can I import data into Framework Manager?

You can import data into Framework Manager by connecting to a data source, selecting the tables or views you want to include, and then using the 'Import' feature to bring them into your model.

What is a model package in Framework Manager?

A model package in Framework Manager is a collection of metadata and data objects that can be published to the Cognos Connection for use in reports and dashboards.

How do I publish a model from Framework Manager?

To publish a model, go to 'File' > 'Publish', select the model package you want to publish, and follow the prompts to set up the publishing options.

Can I create calculated fields in Framework Manager?

Yes, you can create calculated fields in Framework Manager by defining new data items within your queries and using expressions to calculate values based on existing data.

What is the purpose of data source connections in Framework Manager?

Data source connections in Framework Manager allow you to connect to various databases and data sources, enabling you to pull in data for your models and reports.

How do I handle security in Framework Manager?

Security in Framework Manager can be managed by setting up user roles and permissions at the model, package, and data item levels to control access to sensitive data.

What are some best practices for using Framework Manager?

Some best practices include organizing your model logically, documenting your work, using naming conventions for objects, regularly testing your models, and optimizing performance through proper indexing and queries.

Find other PDF article:

<https://soc.up.edu.ph/55-pitch/files?dataid=cQj70-9514&title=sprouts-one-pan-meal-cooking-instruct>

Dec 28, 2013 · IBMIBM Corporation
IBMIBM Corporation PCIBM Corporation IBM...IBM Corporation

IBM...

Nov 11, 2014 · thinkpadthinkpad thinkpad ...

```
IBM 2002 IBM Consulting 20 IBM 2021 10 IBM Consulting IBM
IBM 2021 11 IBM ...
```

IBM POWER X86 2013 IBM 154 X86 49 IBM
POWER X86

Nov 3, 2022 · BLM (Business Leadership Model), 100% 100%, IBM BLM, 100% SWOT 100% ...




ThinkPad , , ThinkPad T14, Thinkpad X1 carbon, ThinkPad , , , ThinkPad ,
 , iPad,

IBM SPSS Statistics 20.0.0.0 (64-bit) [2018.10.11] - [2018.10.11] IBM SPSS Statistics
macOS 10.14.6 (18G2022) ...

4 IBM ...
IBM ...

IBM x86 9 10

IBM

Dec 28, 2013 · IBM  IBM  IBM PC  IBM... 
 IBM  ...

