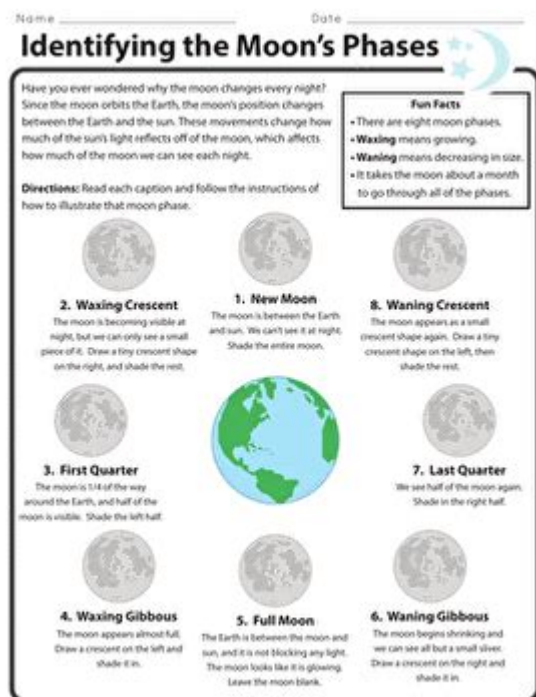


Identifying Phases Of The Moon Answer Key



Identifying phases of the moon answer key is an essential topic for astronomy enthusiasts and students alike. The moon goes through a cyclical pattern of phases, which can be observed from Earth. Understanding these phases not only helps in appreciating the beauty of the night sky but also plays a crucial role in various cultural, agricultural, and scientific contexts. In this article, we'll delve deep into the lunar phases, how to identify them, their significance, and provide an answer key that will help you grasp this celestial phenomenon.

Understanding the Moon Phases

The moon phases are a result of the relative positions of the Earth, moon, and sun. The moon does not generate its own light; instead, it reflects the sunlight that hits its surface. As the moon orbits the Earth, different portions of its surface become illuminated, creating the various phases we observe.

The Lunar Cycle

The lunar cycle lasts approximately 29.5 days and consists of eight main phases:

1. New Moon
2. Waxing Crescent
3. First Quarter

4. Waxing Gibbous
5. Full Moon
6. Waning Gibbous
7. Last Quarter
8. Waning Crescent

This cycle begins anew with the next New Moon phase. Understanding each of these phases is crucial for identifying the moon's appearance on any given night.

Identifying the Phases of the Moon

Identifying the phases of the moon can be simple if you know what to look for. Here's a breakdown of each phase, including tips on how to recognize them.

1. New Moon

- Description: The moon is positioned between the Earth and the sun, making it invisible to the naked eye.
- Identification Tip: Look for a completely dark sky; the moon is not visible.

2. Waxing Crescent

- Description: A small sliver of the moon becomes visible as it starts to move away from the New Moon phase.
- Identification Tip: Look for a crescent shape illuminated on the right side if you are in the Northern Hemisphere.

3. First Quarter

- Description: Half of the moon's surface is illuminated, and it appears as a half-circle.
- Identification Tip: The illuminated part is the right half in the Northern Hemisphere.

4. Waxing Gibbous

- Description: More than half of the moon is illuminated, but it is not yet full.
- Identification Tip: Look for a large, bulbous shape that is brighter than the First Quarter.

5. Full Moon

- Description: The entire face of the moon is illuminated, making it bright and round.
- Identification Tip: Look for a perfectly round and bright moon in the night sky.

6. Waning Gibbous

- Description: After the Full Moon, the illumination starts to decrease, but more than half is still visible.
- Identification Tip: The left side starts to darken while the right side remains bright.

7. Last Quarter

- Description: Similar to the First Quarter, but the illuminated half is now on the left.
- Identification Tip: Look for the left half of the moon illuminated.

8. Waning Crescent

- Description: A small sliver of the moon is visible, but it is decreasing in size.
- Identification Tip: The crescent shape will be illuminated on the left side.

Why Understanding Moon Phases is Important

Identifying phases of the moon is not just an academic exercise. It has practical applications and cultural significance that can enhance your appreciation of the night sky.

Agricultural Practices

Farmers have long relied on the moon's phases to determine the best times for planting, harvesting, and other agricultural activities. The lunar cycle influences water tables and plant growth, making it essential for those in agriculture.

Cultural Significance

Various cultures have different beliefs and traditions associated with the moon phases. For example:

- New Moon: A time for new beginnings and setting intentions.
- Full Moon: Often associated with celebrations, harvests, and ritualistic practices.

Navigation and Maritime Activities

Historically, sailors used the moon phases and its position in the night sky for navigation. Understanding the moon's cycle can also help in planning voyages and anticipating tides.

Moon Phase Calendar

Having a moon phase calendar can aid in identifying the current phase of the moon. Here's how you can create or find one:

- Check lunar calendars available online or in local libraries.
- Use a moon phase app on your smartphone to get real-time updates.
- Create your own calendar by marking the new moon and tracking the phases over a month.

Answer Key for Identifying Moon Phases

To help you solidify your understanding, here's a straightforward answer key for the moon phases based on the descriptions provided:

1. New Moon - Invisible
2. Waxing Crescent - Right side illuminated
3. First Quarter - Right half illuminated
4. Waxing Gibbous - More than half illuminated
5. Full Moon - Fully illuminated
6. Waning Gibbous - Left side starting to darken
7. Last Quarter - Left half illuminated
8. Waning Crescent - Left side illuminated

Conclusion

Identifying phases of the moon answer key provides a foundation for understanding one of nature's most fascinating cycles. By observing the moon regularly and using the tips outlined in this article, you can become proficient in identifying the moon's phases. Whether for practical purposes, scientific inquiry, or personal enjoyment, knowledge of lunar phases enriches our connection to the universe. So, grab a telescope or simply step outside on a clear night, and start identifying the moon's beautiful transformations!

Frequently Asked Questions

What are the main phases of the moon?

The main phases of the moon are New Moon, First Quarter, Full Moon, and Last Quarter.

How can I identify the current phase of the moon?

You can identify the current phase of the moon by observing its shape in the sky or using a lunar calendar or moon phase app.

What is the significance of the moon phases in astronomy?

The phases of the moon are significant in astronomy for understanding the lunar cycle, predicting eclipses, and studying tidal patterns on Earth.

What tools can help in identifying moon phases?

Tools such as moon phase calendars, apps, and astronomy software can help in identifying the current and upcoming phases of the moon.

Why does the moon appear to change shape?

The moon appears to change shape due to its position relative to the Earth and the Sun, which affects how much of its surface is illuminated from our perspective.

Find other PDF article:

<https://soc.up.edu.ph/25-style/Book?dataid=Gcv84-5590&title=good-housekeeping-slow-cooker-recipes.pdf>

[Identifying Phases Of The Moon Answer Key](#)

Witchcraft - Wikipedia

Witchcraft is the use of magic by a person called a witch. Traditionally, "witchcraft" means the use

of supernatural forces to bring about a desired outcome. [1] According to Encyclopedia ...

Witchcraft | Definition, History, Trials, Witch Hunts, & Facts

Witchcraft is a term usually applied to harm brought upon others through the use of supernatural or occult powers. The person engaging in witchcraft is called a witch, while the act of causing ...

A Beginner's Guide to Witchcraft: Spells, Tools, Rituals, and Magic

Jun 15, 2025 · This beginner's guide to witchcraft will help you get started with magic. Learn the basics of spells, tools, rituals, what witchcraft is, and much more.

Witchcraft Beginner Basics - Start Your Magical Journey

Discover the essentials of witchcraft with WiccaNow's Beginner Basics. Learn the fundamental concepts and practices to begin your journey into witchcraft.

What is witchcraft? The definition, the varieties and the history.

Oct 15, 2022 · Witchcraft is open to interpretation depending on the practitioner or scholar. It dates back to the 10th century, but there are modern practitioners.

Witches: Real Origins, Hunts & Trials - HISTORY

Sep 12, 2017 · Witches were perceived as evil beings by early Christians in Europe, inspiring the iconic Halloween figure.

Witchcraft & Witches | Wicca, Paganism, Magic (Magick) Spells,

WitchcraftandWitches.com is one of the largest online resources for Witches, Witchcraft, Wicca, Pagan, Magic (Magick), and Spells. For beginners to adepts.

50 Types of Witches: Witchcraft Knowledge For Beginners

Apr 19, 2025 · Witchcraft is an incredibly diverse and ancient practice that continues to evolve and adapt over time. There are countless paths for witches to follow, each with its own unique ...

How Witchcraft Works - HowStuffWorks

Witchcraft dates back countless centuries, and with all of the mythology floating around, it's hard to decipher fact from fiction. Do witches worship Satan? Do they cast spells? Find out about ...

What is Witchcraft? How the Spirit of Magic Lives in the Everyday

Jan 15, 2025 · What is Witchcraft? Witchcraft uses rituals, spells, and natural elements to manipulate and influence the world around you. It usually involves a strong connection with ...

THE 10 BEST Hotels in Seattle 2025

View deals from \$95 per night, see photos and read reviews for the best Seattle hotels from travelers like you - then compare today's prices from up to 200 sites on Tripadvisor.

The 10 Best Seattle Hotels (From \$148) - Booking.com

Jul 27, 2012 · Great savings on hotels in Seattle, United States online. Good availability and great rates. Read hotel reviews and choose the best hotel deal for your stay.

25 Best Hotels in Seattle for 2025 | U.S. News Travel

U.S. News evaluates top hotels in Seattle using expert insights, awards, class ratings and guest reviews.

16 Best Hotels in Seattle. Hotels from \$64/night - KAYAK

Discover the top hotels in Seattle, handpicked by local expert Naomi Tomky. Most of Seattle's good hotels sit within the Downtown Corridor, and for good reason – the steep hill rising from ...

The 17 Best Hotels in Seattle for 2025 - Time Out

Dec 19, 2024 · Your search for somewhere to lay your head down (preferably on a soft, fluffy pillow) starts here with our list of the best hotels in Seattle from Downtown to Belltown and ...

Hotels in Seattle

Flexible booking options on most hotels. Compare 2,999 hotels in Seattle using 37,304 real guest reviews. Pay what you see with upfront pricing on all hotels.

10 Best Hotels in Seattle From \$112 - Hopper

Compare 106 hotels in Seattle and find deals as low as \$112 per night. Browse reviews, prices and hotels with flexible cancellation options to find the best hotel for your trip.

THE BEST 10 HOTELS in SEATTLE, WA - Updated 2025 - Yelp

Best Hotels in Seattle, WA - Staypineapple, Hotel FIVE, Downtown Seattle, Grand Hyatt, Staypineapple, The Maxwell Hotel, Seattle Center Seattle, Inn at the Market, Hotel 1000, LXR ...

The Best Hotels in Seattle - Travel

Nov 15, 2024 · From music-themed hotels on Puget Sound to cozy inns at Pike Place Market, these are the best hotels in Seattle.

Lodging - Hotels - Accommodations | Visit Seattle

Whatever you want for your stay, you can find it at Seattle's wide variety of hotels. The city's diverse lodging options range from historic and elegant accommodations in the heart of the ...

Unlock the secrets of the lunar cycle with our comprehensive guide on identifying phases of the moon answer key. Discover how to enhance your moon knowledge today!

[Back to Home](#)