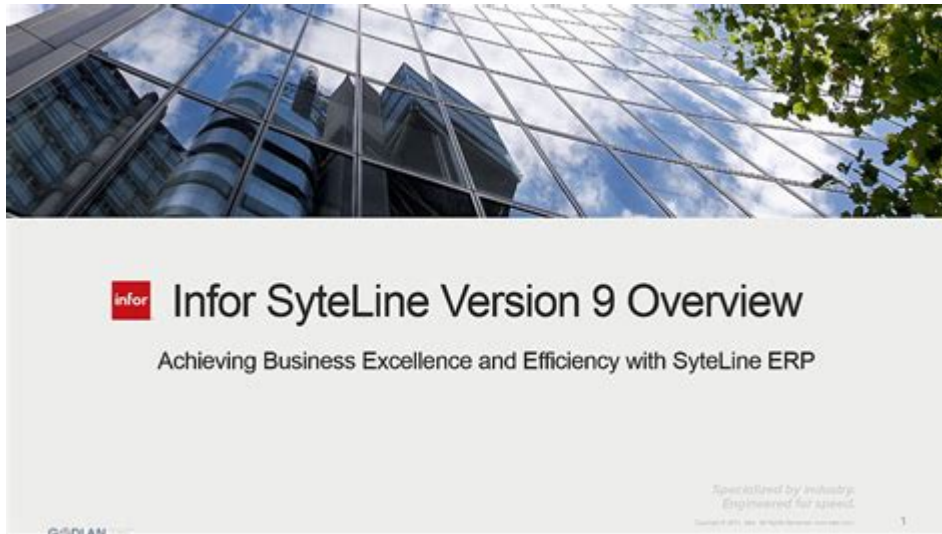


Infor Syteline Training Manuals



Infor Syteline training manuals are essential resources for companies using Infor Syteline, a robust enterprise resource planning (ERP) solution designed specifically for manufacturers and distributors. These training manuals provide comprehensive guidance on navigating the software, understanding its features, and optimizing its use for business processes. In this article, we will delve into the components and significance of Infor Syteline training manuals, outlining their structure, content, and best practices for effective learning.

Understanding Infor Syteline

Before exploring the training manuals, it is vital to understand what Infor Syteline is and why training is crucial. Infor Syteline, now known as Infor CloudSuite Industrial, is a cloud-based ERP solution that caters to the unique needs of manufacturing companies. It offers tools for:

- Supply chain management
- Customer relationship management (CRM)
- Financial management
- Project management
- Production planning and scheduling

Given the complexity and breadth of its functionality, comprehensive training becomes necessary to ensure that users can fully leverage the capabilities of the software.

The Importance of Training Manuals

Training manuals for Infor Syteline serve several purposes, including:

- Standardization of Procedures: They ensure that all users have access to the same information,

promoting consistency in operations.

- Knowledge Transfer: Manuals facilitate the onboarding process for new employees, helping them understand how to use the software effectively.
- Reference Material: Users can refer back to the manuals for troubleshooting or when they encounter unfamiliar features.
- Skill Development: Training manuals help users build their skills progressively, allowing them to explore advanced functionalities as they become more comfortable with the software.

Components of Infor Syteline Training Manuals

A well-structured training manual typically includes several components designed to enhance the learning experience:

1. User Guides

User guides are comprehensive documents that outline the basic functions of Infor Syteline. They usually contain:

- Step-by-step instructions for performing common tasks
- Screenshots and visuals to help users navigate the interface
- Tips and tricks for maximizing efficiency within the software

2. Quick Reference Guides

These are shorter documents that provide concise instructions for specific tasks. Quick reference guides are particularly useful for experienced users who need a refresher on particular features without wading through extensive material.

3. Video Tutorials

Many training manuals incorporate video tutorials that visually demonstrate how to use various features of Infor Syteline. These can be particularly beneficial for visual learners who may struggle with text-based instructions.

4. FAQ Sections

Including a frequently asked questions (FAQ) section can address common concerns and queries that users may have. This section can serve as a valuable resource for troubleshooting and resolving issues without the need for additional support.

5. Exercises and Scenarios

Practical exercises and real-world scenarios allow users to apply what they have learned. These exercises can range from simple tasks to complex projects, reinforcing knowledge and building confidence.

6. Appendices and Glossaries

Appendices can provide additional resources, such as a glossary of terms, keyboard shortcuts, and industry-specific terminology that users may encounter while working with Infor Syteline.

Best Practices for Using Infor Syteline Training Manuals

To maximize the effectiveness of Infor Syteline training manuals, users should consider the following best practices:

1. Set Clear Learning Objectives

Before diving into the training material, users should identify their learning goals. This helps to focus their training efforts and ensures that they are acquiring the necessary skills for their specific roles.

2. Utilize Multiple Learning Modalities

Different people learn in different ways. Combining various formats—such as reading, watching videos, and engaging in hands-on practice—can enhance understanding and retention of information.

3. Take Notes and Document Insights

Encouraging users to take notes while studying the manuals can help reinforce learning. Documenting insights and questions can also facilitate discussions with trainers or colleagues.

4. Engage in Peer Learning

Collaborating with colleagues who are also learning Infor Syteline can provide a supportive learning environment. Peer discussions can lead to shared insights and problem-solving strategies.

5. Regularly Review and Update Knowledge

Infor Syteline is continually evolving, with updates and new features rolled out regularly. Users should make it a habit to review the training manuals periodically to stay up-to-date with changes and enhancements in the software.

6. Provide Feedback on Training Materials

Users should feel encouraged to provide feedback on the training manuals. This feedback can help improve the materials over time, making them more effective for future learners.

Common Challenges in Learning Infor Syteline

Despite the availability of training manuals, users may encounter several challenges when learning Infor Syteline:

1. Complexity of the Software

Infor Syteline is a powerful tool with a vast array of features, which can be overwhelming for new users. Breaking down the training into manageable sections can help ease the learning curve.

2. Lack of Real-World Application

Users may struggle to connect theoretical knowledge from training manuals to practical application in their daily tasks. Integrating case studies and real-life examples in the training process can bridge this gap.

3. Varying Levels of Technical Proficiency

Not all users will have the same level of comfort with technology, which can impact their learning experience. Tailoring training materials to accommodate different skill levels can enhance overall effectiveness.

Conclusion

Infor Syteline training manuals are invaluable tools for organizations looking to enhance their workforce's competency in using this powerful ERP solution. By providing structured guidance and resources, these manuals empower users to navigate the software confidently and efficiently.

Companies that invest in comprehensive training—using well-designed manuals—are likely to see improved productivity, reduced errors, and a more streamlined approach to their business processes. Embracing a culture of continuous learning and adaptation will ensure that users not only become proficient in Infor Syteline but also contribute to their organization's overall success.

Frequently Asked Questions

What are the key features of Infor Syteline training manuals?

Infor Syteline training manuals typically include detailed instructions on system navigation, module functionalities, best practices, troubleshooting tips, and real-world examples to enhance user understanding.

How can I access Infor Syteline training manuals?

Access to Infor Syteline training manuals can usually be obtained through the Infor support portal, your organization's Infor account, or by contacting your Infor representative for specific resources.

Are there any online resources available for Infor Syteline training?

Yes, Infor offers a variety of online resources including webinars, video tutorials, and community forums that complement the training manuals, providing users with additional support and insights.

How often are Infor Syteline training manuals updated?

Infor Syteline training manuals are updated regularly to reflect new software features, enhancements, and best practices. It's advisable to check for updates frequently or subscribe to notifications from Infor.

Can I customize Infor Syteline training manuals for my organization?

Yes, many organizations choose to customize Infor Syteline training manuals to align with their specific processes and workflows, ensuring that the training is relevant and tailored to their needs.

What role do training manuals play in onboarding new employees to Infor Syteline?

Training manuals serve as essential onboarding tools for new employees, providing them with structured, comprehensive information about system functionalities, workflows, and best practices, which helps accelerate their learning curve.

Is there a community or forum for discussing Infor Syteline training manuals?

Yes, Infor has user communities and forums where users can discuss training manuals, share tips, ask questions, and collaborate on solutions related to Infor Syteline.

<https://soc.up.edu.ph/58-view/Book?ID=dcw52-4370&title=the-book-of-the-law-aleister-crowley.pdf>

Infor Events Schedule | B2B Software Events | Infor

infor ERP □□□ □□□□

ao3□□□□□□□□□□ □□□□

Infor SAP E...

Inform SAP ERP ... erp ...

infor ERP □□□ □□□□

Jul 20, 2024 · Infor ERP

Infor Events Schedule | B2B Software Events | Infor

Feb 3, 2025 · Platform Pillars Featured Products Infor Marketplace Infor Marketplace provides complete visibility into all the innovations available for industry-specific customer needs ...

infor ERP □□□ □□□□

Información de contacto:

ao3□□□□□□□□□□ □□□□

Feb 20, 2024 · AO3 Archive of Our Own ...

Infor SAP ...

Infor SAP ERP 10 ERP

infor ERP □□□ □□□□

Jul 20, 2024 · Infor ERP ...
Infor ERP ...

mcno further information

```
mc[no further information] mc[mc] ...
```

```
python inferCNVpy -
```

Aug 21, 2024 · Python InferCNVpy (CNV) R InferCNV

scanpy

info info
Jun 2, 2023 · info information “ ” info
 ...

SUN -
SUN Infor Sun Systems FMS ERP 70000
 ...

OP (+ +) ...
OP (+ + +) :2572192678@qq.com OP Cras numquam scire - -
 - Yucca feat.Hugh Anthony ...

Unlock the full potential of Infor SyteLine with our comprehensive training manuals. Discover how to streamline your processes and enhance productivity. Learn more!

[Back to Home](#)