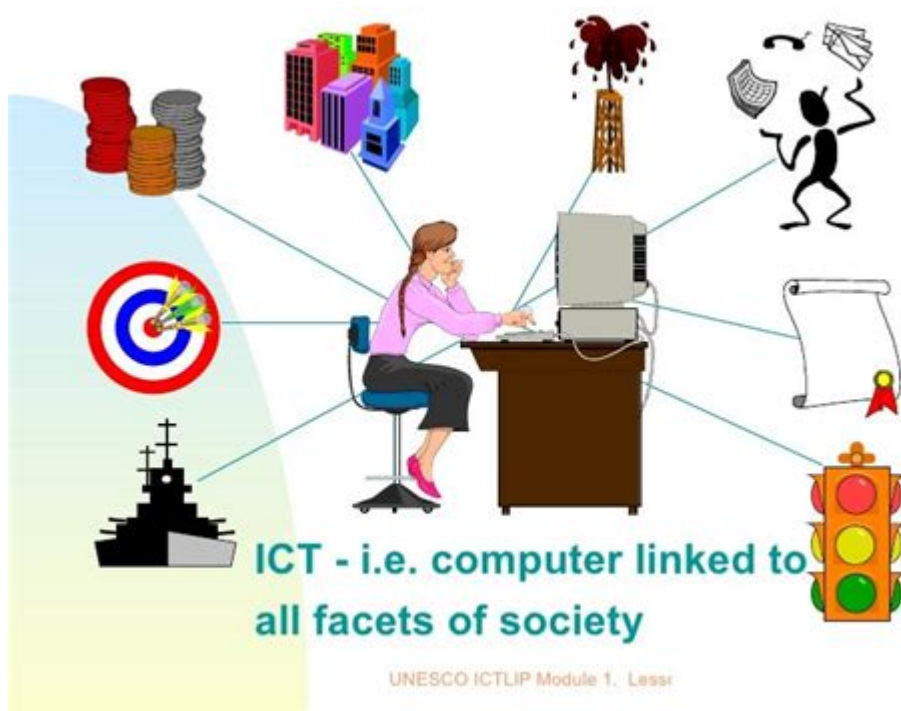


# Impact Of The Computer On Society



## Impact of the Computer on Society

The impact of the computer on society has been both profound and transformative, marking the transition into the digital age and reshaping nearly every facet of human life. From personal communication to global commerce, the computer has revolutionized the way individuals interact with one another and the world around them. This article explores the various dimensions of this impact, analyzing how computers have influenced education, healthcare, business, and social interactions, as well as the challenges they present.

## Revolutionizing Education

Computers have drastically changed the landscape of education, enhancing both teaching and learning processes. The integration of technology into education has led to several significant advancements.

### Access to Information

- Information at Fingertips: Computers give students and educators access to a vast array of information and resources. Online databases, e-books, and educational websites have made learning materials accessible from anywhere.
- Global Learning Communities: Students can connect with peers and educators around the world, fostering collaborative learning experiences.

## **Innovative Teaching Methods**

- E-Learning Platforms: Online courses and platforms like Coursera, Khan Academy, and edX have emerged, allowing learners to pursue education at their own pace and schedule.
- Interactive Learning Tools: Software and applications like simulations, educational games, and virtual labs enhance engagement and understanding of complex subjects.

## **Challenges in Education**

- Digital Divide: Not all students have equal access to technology, leading to disparities in educational opportunities.
- Distraction and Overreliance: With the abundance of information comes the risk of distraction, and students may become overly reliant on technology for answers instead of developing critical thinking skills.

## **Transforming Healthcare**

The healthcare sector has also been significantly impacted by the rise of computers, leading to improved patient care, research, and management.

## **Enhanced Patient Care**

- Electronic Health Records (EHRs): EHRs allow for the efficient management of patient data, improving accuracy and accessibility for healthcare providers.
- Telemedicine: Remote consultations have become commonplace, enabling patients to receive care without the need for physical visits, which is particularly beneficial in rural areas.

## **Research and Development**

- Data Analysis: Computers facilitate the analysis of vast amounts of data, accelerating research in drug development, genetics, and epidemiology.
- Artificial Intelligence: AI applications in healthcare are helping to predict patient outcomes, diagnose diseases, and personalize treatment plans.

## **Challenges in Healthcare**

- Privacy Concerns: The digitalization of health records raises concerns about patient privacy and data security.
- Healthcare Inequities: Similar to education, disparities in access to technology can lead to inequities in healthcare delivery.

# Transforming Business Practices

The business landscape has undergone a significant transformation due to computers, leading to the emergence of new business models and practices.

## Operational Efficiency

- Automation: Computers streamline operations through automation of repetitive tasks, which increases productivity and reduces human error.
- Data Management: Businesses can analyze data to make informed decisions, improving operational efficiency and strategic planning.

## Globalization of Markets

- E-Commerce: The rise of online shopping platforms has allowed businesses to reach global markets, enabling consumers to purchase goods and services from around the world.
- Remote Work: Computers have facilitated a shift towards remote work, allowing companies to hire talent from various geographical locations.

## Challenges in Business

- Cybersecurity Risks: As businesses become more reliant on technology, they face increasing threats from cyberattacks, requiring robust security measures.
- Job Displacement: Automation may lead to job losses in certain sectors, raising concerns about the future of work.

## Changing Social Interactions

The way individuals interact socially has been fundamentally altered by the introduction of computers and the internet.

## Online Communication

- Social Media: Platforms like Facebook, Twitter, and Instagram have transformed how people connect, share, and communicate, creating a global network of interactions.
- Instant Messaging: Communication has become more instantaneous, allowing people to connect with others across distances in real time.

## **Impact on Relationships**

- New Forms of Relationships: Online dating and virtual friendships have become commonplace, leading to new dynamics in personal relationships.
- Community Building: Online communities enable individuals with shared interests to connect, fostering a sense of belonging.

## **Challenges in Social Interactions**

- Isolation and Loneliness: While online interactions can connect people, they may also lead to feelings of isolation and loneliness, as face-to-face interactions decline.
- Misinformation: The rapid spread of information online can lead to the dissemination of misinformation, affecting public perception and behavior.

## **Ethical and Environmental Considerations**

The widespread use of computers raises important ethical and environmental considerations that society must address.

### **Ethical Considerations**

- Data Privacy: The collection, storage, and use of personal data by companies raise ethical questions about consent and privacy rights.
- Artificial Intelligence Ethics: The rise of AI and machine learning poses ethical dilemmas regarding bias, accountability, and the potential for job displacement.

### **Environmental Impact**

- E-Waste: The disposal of outdated or broken electronics contributes to environmental pollution, prompting the need for sustainable disposal practices.
- Energy Consumption: Data centers and the overall use of computers contribute to significant energy consumption, necessitating a push towards more sustainable energy sources.

## **Conclusion**

The impact of the computer on society is undeniable and multifaceted. Computers have enhanced education, transformed healthcare, revolutionized business practices, and changed social interactions. However, they also present challenges that require careful consideration and proactive solutions. As society continues to navigate the digital landscape, it is imperative to harness the potential of computers while addressing the ethical, social, and environmental implications they

bring. By doing so, we can ensure that the benefits of this technology are realized for all, paving the way for a more equitable and sustainable future.

## **Frequently Asked Questions**

### **How has the computer changed the way we communicate?**

Computers have revolutionized communication by enabling instant messaging, video calls, and social media platforms, allowing people to connect across the globe in real-time.

### **What role do computers play in education today?**

Computers facilitate online learning, provide access to vast educational resources, and support interactive learning environments, making education more accessible and customizable.

### **How has the computer impacted the job market?**

Computers have created new job opportunities in tech fields while automating many manual tasks, leading to a shift in required skills and increasing the demand for digital literacy.

### **In what ways do computers influence our daily lives?**

Computers manage various aspects of daily life, from online banking and shopping to health monitoring and navigation, enhancing convenience but also leading to increased dependency.

### **What are the privacy concerns associated with computer use?**

The widespread use of computers raises significant privacy concerns, including data breaches, surveillance, and the potential misuse of personal information by companies and governments.

### **How do computers affect social interactions?**

While computers enable new forms of social interaction through online platforms, they can also lead to decreased face-to-face communication and potential isolation for some individuals.

### **What is the environmental impact of computers?**

The production and disposal of computers contribute to electronic waste and environmental pollution, prompting a push for sustainable practices in the tech industry.

### **How have computers transformed the healthcare industry?**

Computers have improved healthcare through electronic health records, telemedicine, and data analysis, enhancing patient care and operational efficiency in medical facilities.

### **What are the ethical considerations of computer technology in society?**

Ethical considerations include issues of AI bias, data privacy, and the digital divide, necessitating

discussions on responsible use and equitable access to technology.

Find other PDF article:

<https://soc.up.edu.ph/44-slide/files?ID=Ilx87-3741&title=ohwoai-security-camera-manual.pdf>

## Impact Of The Computer On Society

*effect, affect, impact* “” -

effect, affect, impact 1. effect. To effect ( ) ← which is an effect ( ) The new rules will effect ( ), which is an ...

**2025win11** -

win11: win7 win7 win11 win10 ...

“Genshin Impact” -

Impact 3 Impact 3

SCI JCR SCI ...

Jan 16, 2024 · JCR Impact Factor ...

**Communications Earth & Environment** -

Feb 20, 2025 · Communications Earth & Environment Nature Geoscience Nature...

**Should the verb "impact" be always followed by "on"?**

Dec 22, 2018 · 1 Impact will be followed by 'on' if it is a noun. This circumstance will have an impact to my life. However, it should not be followed by 'on' if it is verb. This circumstance ...

JACS Au -

JACS Au JACS JACS Launching in 2020, this fully open access journal will allow for the rapid dissemination ...

**csgo rating rws kast** ...

Feb 20, 2021 · rating rating 0.9 KD 1 ...

Nature synthesis -

Nature Synthesis JACS Nature Synthesis ...

Impact - verb - to impact on? | WordReference Forums

Jul 18, 2021 · Is there a grammarians' consensus as to the usage of impact (as a verb)? Should it always take the preposition on or is it a matter of personal preference?

## effect, affect, impact “” -

effect, affect, impact 1. effect. To effect ( ), which is an effect ( ) The new rules will effect ( ), which is an effect ( ) ...

## 2025win11 -

win11: win7 win7 win11 win10 ...

## “Genshin Impact” -

Impact 3 Impact 3

## SCI JCR SCI ...

Jan 16, 2024 · JCR Impact Factor ...

## Communications Earth & Environment -

Feb 20, 2025 · Communications Earth & Environment Nature Geoscience Nature...

## Should the verb "impact" be always followed by "on"?

Dec 22, 2018 · 1 Impact will be followed by 'on' if it is a noun. This circumstance will have an impact to my life. However, it should not be followed by 'on' if it is verb. This circumstance impacts my ...

## JACS Au -

JACS Au JACS JACS Launching in 2020, this fully open access journal will allow for the rapid dissemination of ...

## csgo rating rws kast ...

Feb 20, 2021 · rating 0.9 KD 1 ...

## Nature synthesis -

Nature Synthesis JACS Nature Synthesis ...

## Impact - verb - to impact on? | WordReference Forums

Jul 18, 2021 · Is there a grammarians' consensus as to the usage of impact (as a verb)? Should it always take the preposition on or is it a matter of personal preference?

Explore the profound impact of the computer on society

[Back to Home](#)