

Ib Math HL Paper 1

Subject - Math AA(Higher Level)
Topic - Functions
Year - May 2021 - Nov 2022
Paper -1
Questions

Question 1

[Maximum mark: 5]

The functions f and g are defined such that $f(x) = \frac{x+3}{4}$ and $g(x) = 8x+5$.

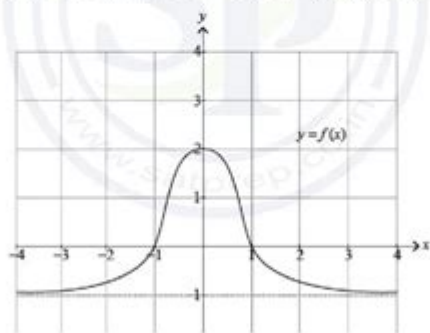
(a) Show that $(g \circ f)(x) = 2x + 11$. [2]

(b) Given that $(g \circ f)^{-1}(a) = 4$, find the value of a . [3]

Question 2

[Maximum mark: 5]

The following diagram shows the graph of $y = f(x)$. The graph has a horizontal asymptote at $y = -1$. The graph crosses the x -axis at $x = -1$ and $x = 1$, and the y -axis at $y = 2$.



On the following set of axes, sketch the graph of $y = [f(x)]^2 + 1$, clearly showing any asymptotes with their equations and the coordinates of any local maxima or minima.

IB Math HL Paper 1 is a crucial examination for students pursuing the International Baccalaureate (IB) Diploma Programme, particularly those specializing in higher-level mathematics. This assessment not only tests students' mathematical skills but also their ability to apply these skills in various contexts. The paper is designed to measure understanding, problem-solving abilities, and the capacity to think critically about mathematical concepts. In this article, we will explore the structure, content, preparation strategies, and essential tips for succeeding in the IB Math HL Paper 1.

Structure of IB Math HL Paper 1

The IB Math HL Paper 1 is a written examination that consists of several components designed to assess a

wide range of mathematical skills. Understanding the structure can significantly enhance students' performance.

Format of the Examination

- Duration: The exam lasts for 2 hours.
- Total Marks: The paper is graded out of 100 marks.
- Question Types: The exam comprises a variety of question types, including:
 - Short-answer questions
 - Extended response questions
- Calculator Use: This paper is non-calculator based, which means students must rely on their analytical skills and mental mathematics.

Content Areas Covered

The content of IB Math HL Paper 1 aligns with the curriculum outlined by the IB. The main topics covered include:

1. Algebra
 - Polynomial functions
 - Sequences and series
 - Complex numbers
2. Functions and Equations
 - Properties of functions
 - Inverse functions
 - Exponential and logarithmic functions
3. Geometry and Trigonometry
 - Coordinate geometry
 - Trigonometric functions
 - Area and volume calculations
4. Statistics and Probability
 - Descriptive statistics
 - Probability distributions
 - Hypothesis testing
5. Calculus
 - Differentiation and integration

- Applications of derivatives and integrals
- Differential equations

6. Discrete Mathematics

- Graph theory
- Matrices
- Combinatorics

Preparation Strategies

Preparing for the IB Math HL Paper 1 requires a structured approach and consistent practice. Here are effective strategies that can help students excel.

Understand the Syllabus

- Review the IB Mathematics HL syllabus to familiarize yourself with the content areas.
- Identify the weightage of each topic in terms of marks to allocate your study time effectively.

Practice Past Papers

- Importance of Past Papers: Practicing past examination papers helps students understand the format and types of questions that appear in the exam.
- Time Management: Simulate exam conditions by timing yourself while practicing.
- Marking Schemes: After completing past papers, review marking schemes to understand how marks are allocated for different types of answers.

Conceptual Understanding

- Focus on understanding the underlying concepts rather than rote memorization.
- Use visual aids, such as graphs and diagrams, to help comprehend complex ideas.

Study Groups and Tutoring

- Collaborate with peers to discuss challenging topics and share different problem-solving approaches.
- Consider hiring a tutor if you struggle with specific concepts or require additional guidance.

Utilize Online Resources

- Take advantage of online platforms that offer resources, such as video tutorials and interactive practice questions.
- Websites like Khan Academy, IB Math Resources, and others provide comprehensive support.

Effective Study Techniques

To maximize your study sessions and retain information, consider the following techniques.

Active Learning

- Engage in problem-solving rather than passive reading. Work through problems and seek to explain your reasoning.
- Use flashcards for formulas and key concepts to enhance memory retention.

Regular Revision

- Create a revision schedule that includes regular reviews of material.
- Break down study sessions into manageable chunks to avoid burnout.

Mock Exams

- Organize mock exams with classmates to simulate real exam conditions.
- Review your performance after each mock exam to identify areas for improvement.

Tips for Success on Exam Day

As the exam day approaches, students need to be well-prepared not just academically, but mentally as well. Here are some tips for success.

Get Adequate Rest

- Ensure you get enough sleep the night before the exam to stay focused and alert.
- Avoid last-minute cramming, as this can increase anxiety.

Arrive Prepared

- Bring necessary materials, including pens, pencils, erasers, and a ruler.
- Double-check any specific requirements set by the IB for the exam.

Read Questions Carefully

- Take your time to understand each question before attempting to solve it.
- Highlight or underline key terms that indicate what the question is asking.

Manage Your Time Wisely

- Allocate time for each question based on its mark value.
- If you encounter a challenging question, move on and return to it later if time permits.

Check Your Work

- If time allows, review your answers to catch any errors or omissions.
- Ensure that your final answers are clearly presented and justified.

Conclusion

In conclusion, the IB Math HL Paper 1 is a comprehensive assessment that requires a deep understanding of various mathematical concepts and effective problem-solving skills. By familiarizing themselves with the exam structure, utilizing effective preparation strategies, and employing smart study techniques, students can enhance their chances of success. Remember to maintain a balanced approach to studying, ensuring adequate rest and mental preparation leading up to the exam day. With dedication and the right strategies, students can navigate the challenges of the IB Math HL Paper 1 confidently and effectively.

Frequently Asked Questions

What topics are typically covered in IB Math HL Paper 1?

IB Math HL Paper 1 generally covers topics such as algebra, functions, statistics, calculus, and geometry. It emphasizes problem-solving and requires a strong understanding of mathematical concepts.

How is IB Math HL Paper 1 structured?

IB Math HL Paper 1 is structured as a non-calculator examination consisting of around 13 questions. The questions range in difficulty and assess a variety of mathematical skills and knowledge.

What resources can students use to prepare for IB Math HL Paper 1?

Students can prepare for IB Math HL Paper 1 by utilizing past paper exams, revision guides, online resources, and study groups. Engaging with practice problems and mock exams is particularly beneficial.

What is the best strategy for time management during IB Math HL Paper 1?

A good strategy for time management is to quickly skim through the questions, allocate fixed time for each question, and tackle easier questions first to secure marks before moving on to more challenging ones.

Are there any specific types of questions that frequently appear in IB Math HL Paper 1?

Yes, common question types include those that require proofs, calculations, and applications of theorems. Students often encounter questions that involve graphing and interpreting functions as well.

How can students effectively review for IB Math HL Paper 1?

Students can effectively review by creating a study schedule, focusing on weak areas, practicing with past papers, and seeking help from teachers or tutors for difficult concepts.

What are some common mistakes to avoid in IB Math HL Paper 1?

Common mistakes include misreading the questions, poor time management, neglecting to show work for calculations, and not checking answers for accuracy. Being mindful of these can help improve performance.

Find other PDF article:

<https://soc.up.edu.ph/26-share/pdf?dataid=PYC50-6552&title=growing-your-own-vegetable-garden.pdf>

Ib Math Hl Paper 1

IB

IB International Baccalaureate IBO 3-19 ...

IB -

IB IB IBO A-Level +AP
3-19 ...

A-level *IB* *AP* *SAT* *ACT* -

IB K12 12 IB IB
A-Level ...

IB AP A-LEVEL ...

IB IB International Baccalaureate IBO 3-19 IB ...

IB -

IB 國際 Baccalaureate Organization 3-19 ...

IB□□□□□□□□ - □□

IB 45 IB IB ...

□ ...

3 21 3 27 ...

CoIP/IP, IB, HA (tag) ~

Apr 5, 2013 · IB immunoblotting Western Blotting HA HA HA
Input IP IB ...

ibic - **ibic**

Oct 31, 2024 · `ib` `ic` `IA` `IB` `IC` `IA` `0` `1` `2` `IB` ...

UniMelb2025 ...

Apr 6, 2025 · 1872 ...

□□□□□□□□*IB*□□□□□□□□ - □□

IB International Baccalaureate IBO 3-19 ...

□□□*IB*□□□□□ - □□

IB IB IB A-Level + AP
3-19 ...

