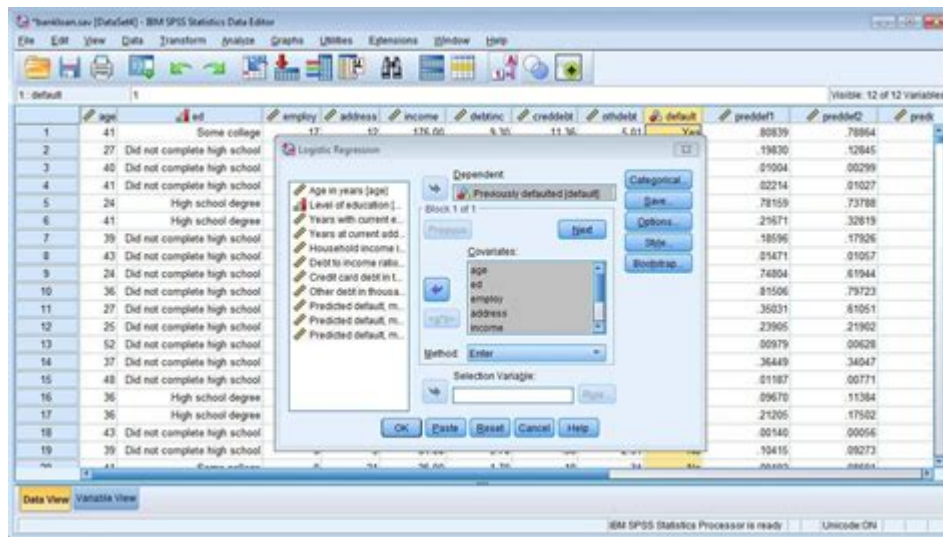


Ibm Spss Statistics Student Version



IBM SPSS Statistics Student Version is a powerful statistical software package designed to assist students in performing advanced statistical analysis and data management. Widely used in various academic disciplines, including psychology, social sciences, health, and business, the student version of IBM SPSS Statistics provides essential tools for data analysis, enabling learners to understand and interpret complex data sets effectively. This article explores the features, benefits, installation process, and best practices for using the IBM SPSS Statistics Student Version, making it an essential resource for students and educators alike.

What is IBM SPSS Statistics?

IBM SPSS Statistics is a comprehensive software solution that allows users to analyze data and draw meaningful conclusions. Originally developed in the late 1960s, SPSS (Statistical Package for the Social Sciences) has evolved into a leading tool for statistical analysis. The software supports various functions, including:

- Descriptive statistics
- Inferential statistics
- Regression analysis
- ANOVA (Analysis of Variance)
- Non-parametric tests
- Data visualization

The student version is tailored specifically for academic users, providing access to most of the core features of the full version while being cost-effective and user-friendly.

Key Features of IBM SPSS Statistics Student Version

The IBM SPSS Statistics Student Version includes several essential features that cater to the statistical needs of students:

1. User-Friendly Interface

One of the standout aspects of SPSS is its intuitive, user-friendly interface. The software features a menu-driven design, making it easy for users with varying levels of statistical knowledge to navigate through the program. Key features include:

- Drop-down menus for easy access to functions
- Contextual help options
- A syntax editor for advanced users

2. Comprehensive Statistical Techniques

The student version includes a wide range of statistical techniques, allowing users to engage with various types of data analysis. Some of the techniques available include:

- Descriptive statistics (mean, median, mode)
- Correlation and regression analysis
- T-tests and ANOVA
- Chi-square tests
- Factor analysis and cluster analysis

3. Data Management Capabilities

Effective data management is crucial for any analysis, and SPSS delivers robust tools for handling data. Features include:

- Data transformation and manipulation
- Variable management
- Missing value analysis
- Data integration from different sources

4. Graphical Output and Visualization

SPSS provides powerful visualization tools to help users present their findings clearly. The software offers:

- Bar charts, histograms, and scatterplots
- Boxplots and line graphs
- Customizable chart options
- Exportable graphics for presentations and reports

5. Documentation and Support

IBM SPSS Statistics Student Version comes with extensive documentation and support resources, including:

- Built-in tutorials and guides
- Online forums and community support
- Access to IBM's knowledge base

System Requirements

Before installing IBM SPSS Statistics Student Version, it is essential to ensure that your computer meets the necessary system requirements. While these may vary slightly based on the specific version, the general requirements include:

- Operating System: Windows 10 or later, macOS 10.13 or later
- Processor: Intel or AMD processor (64-bit recommended)
- RAM: At least 4 GB (8 GB recommended for larger datasets)
- Hard Disk Space: Minimum of 4 GB free space for installation
- Display: 1024 x 768 resolution or higher

Installation Process

Installing IBM SPSS Statistics Student Version is a straightforward process. Follow these steps to get started:

Step 1: Purchase and Download

1. Visit the IBM SPSS website or an authorized educational retailer.
2. Purchase the student version, ensuring you have a valid student ID or proof of enrollment.
3. Download the installation file for your operating system.

Step 2: Installation

1. Locate the downloaded installation file and double-click it to start the installation process.
2. Follow the on-screen prompts to accept the license agreement and choose the installation location.
3. Enter your activation code when prompted. This code is typically provided upon purchase.
4. Complete the installation and restart your computer if required.

Step 3: Getting Started

1. Launch the software from your applications folder or desktop shortcut.
2. Familiarize yourself with the interface by exploring the menus and help resources.
3. Import or enter your data and begin performing analyses.

Best Practices for Using IBM SPSS Statistics

To maximize the benefits of IBM SPSS Statistics Student Version, consider the following best practices:

1. Understanding Your Data

Before diving into analysis, take the time to understand the structure, type, and quality of your data. Ensure that all variables are correctly defined and that you address any missing values or outliers.

2. Learning the Basics of Statistics

A solid foundation in statistical principles is vital for interpreting the results correctly. Resources such as textbooks, online courses, and tutorials can help you grasp essential concepts.

3. Utilizing Help Resources

Make use of the extensive help resources available within SPSS, including tutorials and user guides. Online forums and communities can also provide valuable insights and answers to specific questions.

4. Keeping Your Work Organized

Maintain organized files for your data sets, output, and syntax. Proper documentation and labeling will make it easier to revisit your work or share it with others.

5. Practicing Regularly

The best way to become proficient in using IBM SPSS Statistics is through practice. Regularly engage with the software, experimenting with different analyses and exploring its features.

Conclusion

The IBM SPSS Statistics Student Version is an invaluable tool for students looking to enhance their statistical analysis capabilities. With its user-friendly interface, comprehensive statistical techniques, and robust data management features, students can effectively analyze data and draw meaningful conclusions. By following best practices and utilizing available resources, students can maximize their learning experience and apply their newfound skills in various academic and research settings. Whether you are a novice or an experienced user, the IBM SPSS Statistics Student Version offers a wealth of opportunities for academic growth and success.

Frequently Asked Questions

What is IBM SPSS Statistics Student Version?

IBM SPSS Statistics Student Version is a software package designed for students to perform statistical analysis, offering a wide range of functionalities similar to the professional version but at a reduced cost for educational purposes.

How can students obtain the IBM SPSS Statistics Student Version?

Students can obtain the IBM SPSS Statistics Student Version through their educational institution, which may provide it at a discounted rate, or they can purchase it directly from IBM's website or authorized resellers.

What are the key features of the IBM SPSS Statistics Student Version?

Key features include data management, statistical analysis, regression analysis, advanced modeling, and the ability to create various types of graphs and charts. It also supports syntax for automation of tasks.

Is there a time limit for using the IBM SPSS Statistics Student Version?

Yes, the IBM SPSS Statistics Student Version typically has a limited license duration, often around 12 months, after which students may need to renew or upgrade to a full version.

Can the IBM SPSS Statistics Student Version be used for commercial purposes?

No, the IBM SPSS Statistics Student Version is intended solely for educational use and not for commercial purposes or professional work.

What are the system requirements for installing the IBM SPSS Statistics Student Version?

The system requirements usually include a compatible Windows or macOS operating system, a minimum amount of RAM (typically 4GB or more), and sufficient hard drive space for installation and data storage.

Are there any tutorials or resources available for learning IBM SPSS Statistics Student Version?

Yes, IBM provides various resources, including user guides, tutorials, and online forums, along with many educational institutions offering workshops or classes to help students learn how to use the software effectively.

Find other PDF article:

<https://soc.up.edu.ph/66-gist/pdf?dataid=Mnt18-8648&title=what-is-occult-science.pdf>

Ibm Spss Statistics Student Version

IBM 2002 IBM Consulting 20 IBM 2021 10 IBM Consulting IBM
 IBM 2021 ...

IBM POWER X86 2013 IBM 154 X86 49 IBM
POWER X86

[Back to Home](#)