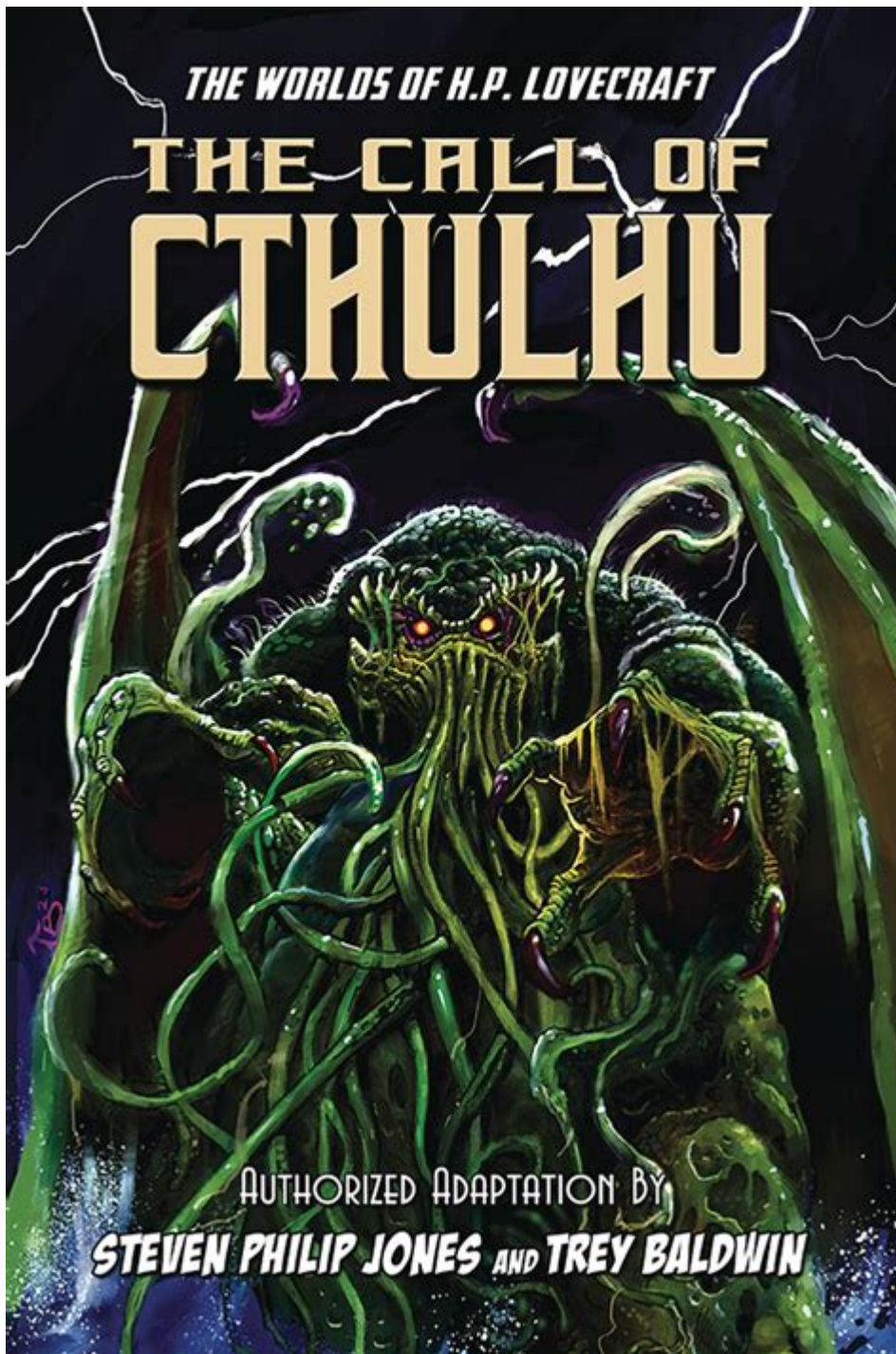


Hp Lovecraft The Call Of Cthulhu



H.P. Lovecraft's "The Call of Cthulhu" is a seminal work in the genre of weird fiction, published in 1928 in the pulp magazine "Weird Tales." This short story not only showcases Lovecraft's unique narrative style but also introduces readers to a universe filled with cosmic horror, ancient deities, and the insignificance of humanity. The tale is structured through multiple narratives, presenting a complex tapestry of characters, settings, and ideas that have captivated readers and inspired countless adaptations and discussions since its release. This article will delve into the themes, characters, and impact of "The Call of Cthulhu," as well as its significance within Lovecraft's broader body of work.

Background of H.P. Lovecraft

H.P. Lovecraft (1890-1937) is one of the most influential figures in American literature, especially within the horror genre. Despite his limited recognition during his lifetime, Lovecraft's reputation has grown significantly posthumously. His writing is characterized by:

- Cosmic Horror: A belief in the insignificance of humanity in the face of incomprehensible forces.
- Antiquarianism: A fascination with ancient history and mythology.
- Weird Fiction: Blending horror with science fiction and fantasy elements.

Lovecraft's life experiences, including his struggles with poverty and mental health, greatly influenced his writing style and thematic concerns. "The Call of Cthulhu" exemplifies these themes and serves as a cornerstone of his literary legacy.

Plot Summary

"The Call of Cthulhu" is divided into three distinct parts, each narrated from the perspective of different characters. This multi-layered approach allows Lovecraft to build a complex narrative, intertwining multiple viewpoints to enhance the story's depth and breadth.

Part 1: The Horror from the Sea

The story begins with the narrator, Francis Wayland Thurston, who discovers the notes of his late grand-uncle, Professor George Gammell Angell, an expert in ancient languages. Angell had been investigating a strange cult that worships Cthulhu, an ancient cosmic entity. As Thurston delves deeper into Angell's research, he uncovers the following:

- The Cult of Cthulhu: A secretive group that believes in the return of Cthulhu and engages in dark rituals.
- The Statues: Angell's research leads him to a bizarre idol representing Cthulhu, which was found in a remote island in the South Pacific.
- The Dreams: Angell had a series of disturbing dreams linked to Cthulhu, suggesting that the entity can influence the minds of individuals.

Through this exploration, Lovecraft introduces readers to the concept of cosmic horror, emphasizing how ordinary people can be driven to madness upon encountering the unknowable.

Part 2: The Tale of Inspector Legrasse

The second part of the story shifts focus to Inspector John Raymond Legrasse, who, while investigating a series of brutal murders in the swamps of Louisiana, discovers evidence of the Cthulhu cult. During a raid on a cult gathering, Legrasse witnesses:

- Ritualistic Practices: The cultists perform horrific ceremonies to summon Cthulhu, revealing their

worship of the creature.

- The Connection: Legrasse learns about the shared beliefs of various cults around the world, suggesting that Cthulhu's influence spans across cultures and continents.

This section of the story deepens the reader's understanding of Cthulhu's reach and the fear it instills in those who encounter it.

Part 3: The Madness from the Sea

The final part of the story recounts the harrowing experiences of a Norwegian sailor named Henry Anthony Wilcox. Wilcox's ship encounters a mysterious island, which is later identified as R'lyeh, Cthulhu's resting place. His account includes:

- The Awakening of Cthulhu: The crew inadvertently awakens the sleeping entity, leading to chaos and destruction.
- Survival and Madness: Wilcox is one of the few survivors, haunted by the visions of Cthulhu and the terror of what he witnessed.

This climax reveals the enormity of Cthulhu's power and the fragility of human sanity when confronted with the cosmic unknown.

Thematic Elements

"The Call of Cthulhu" explores various themes that contribute to its lasting impact on literature and culture.

Cosmic Insignificance

At the core of Lovecraft's philosophy is the idea that humanity is insignificant in the grand scheme of the universe. Cthulhu embodies this theme, representing forces beyond human comprehension. The story conveys that our understanding of reality is limited, and there are ancient entities that exist beyond our perception.

Fear of the Unknown

Lovecraft masterfully builds tension through the unknown. The gradual revelation of Cthulhu's existence, coupled with the characters' psychological unraveling, evokes a deep sense of dread. The fear of what lies beyond human understanding is a central pillar of Lovecraft's work.

The Nature of Reality

The blending of dreams and reality in "The Call of Cthulhu" raises questions about the nature of existence. The thin line between sanity and madness is explored as characters grapple with their experiences. Lovecraft suggests that reality itself may be more malleable and deceptive than it appears.

Impact and Legacy

"The Call of Cthulhu" has had a profound influence on not only horror literature but also popular culture as a whole. Its themes and characters have inspired countless works across various media.

Influence on Literature

Many authors have drawn inspiration from Lovecraft's work, contributing to the evolution of the horror genre. Notable writers influenced by Lovecraft include:

- Robert E. Howard: Creator of Conan the Barbarian, who incorporated elements of cosmic horror in his stories.
- Clark Ashton Smith: A contemporary of Lovecraft, known for his poetic and weird tales.
- Thomas Ligotti: A modern writer who explores similar themes of existential dread and horror.

Adaptations in Popular Culture

The character of Cthulhu has transcended literature, appearing in various forms of media:

- Films: Adaptations of Lovecraft's work, including "The Call of Cthulhu," have been made, with varying degrees of fidelity to the source material.
- Games: The tabletop role-playing game "Call of Cthulhu" allows players to explore Lovecraftian themes in interactive storytelling.
- Music: Various bands and artists have referenced Cthulhu in their lyrics, drawing on the entity's cultural significance.

Conclusion

H.P. Lovecraft's "The Call of Cthulhu" stands as a monumental achievement in horror literature, encapsulating the author's unique blend of cosmic horror, existential dread, and the fear of the unknown. Through its intricate narrative structure and profound themes, the story challenges readers to confront their own perceptions of reality and humanity's place in the universe. As a foundational text in the genre of weird fiction, "The Call of Cthulhu" continues to resonate with audiences, inspiring new generations of writers, filmmakers, and artists to explore the dark corners of existence. Its legacy endures, a testament to Lovecraft's enduring influence on the world of speculative fiction.

Frequently Asked Questions

What is the main theme of H.P. Lovecraft's 'The Call of Cthulhu'?

The main theme of 'The Call of Cthulhu' revolves around cosmic horror and the insignificance of humanity in the face of incomprehensible and ancient cosmic entities.

How does 'The Call of Cthulhu' influence modern horror literature?

'The Call of Cthulhu' has significantly influenced modern horror by introducing the concept of cosmic horror, inspiring writers to explore themes of existential dread, forbidden knowledge, and the unknown.

What are the key elements of the Cthulhu Mythos introduced in this story?

Key elements introduced include the Great Old Ones, particularly Cthulhu, the Necronomicon, and the idea of ancient beings that exist beyond human understanding and have the power to drive people insane.

Who are the main characters in 'The Call of Cthulhu'?

The main character is the unnamed narrator, who investigates the cult of Cthulhu, along with notable figures like Professor Henry Anthony Wilcox and Inspector John Raymond Legrasse, who have their own encounters with the mythos.

What narrative techniques does Lovecraft use in 'The Call of Cthulhu'?

Lovecraft employs an unreliable narrator, non-linear storytelling, and a mix of first-person accounts and scholarly articles to create a sense of realism and build suspense.

Why is 'The Call of Cthulhu' considered a seminal work in horror fiction?

'The Call of Cthulhu' is considered seminal because it established a new subgenre of horror that focuses on the unknown and the unknowable, influencing countless writers, filmmakers, and artists in the horror genre.

Find other PDF article:

<https://soc.up.edu.ph/62-type/files?trackid=nxb91-0072&title=therapy-dogs-in-schools-statistics.pdf>

[Hp Lovecraft The Call Of Cthulhu](#)

Laptop Computers, Desktops, Printers, Ink & Toner | HP® C...

Learn about HP printers, laptops, desktops and more at the Official HP® Website

Official HP® Drivers and Software Download | HP® Su...

Download the latest drivers, software, firmware, and diagnostics for your HP products from the official HP ...

HP Smart

HP Smart allows you to print, scan, and manage your printer from any device.

HP Laptops - Best Buy Canada

With BestBuy.ca's wide selection of HP laptops you'll find the perfect machine for you and enjoy great deals at the ...

HP Store Canada

Find a great collection of Laptops, Printers, Desktop Computers and more at HP Canada. Enjoy Low Prices and ...

Laptop Computers, Desktops, Printers, Ink & Toner | HP® Canada

Learn about HP printers, laptops, desktops and more at the Official HP® Website

Official HP® Drivers and Software Download | HP® Support

Download the latest drivers, software, firmware, and diagnostics for your HP products from the official HP Support website.

HP Smart

HP Smart allows you to print, scan, and manage your printer from any device.

HP Laptops - Best Buy Canada

With BestBuy.ca's wide selection of HP laptops you'll find the perfect machine for you and enjoy great deals at the best price with our Lowest Price Guarantee.

HP Store Canada

Find a great collection of Laptops, Printers, Desktop Computers and more at HP Canada. Enjoy Low Prices and Free Shipping when you buy now online.

Official HP® Support

Find support and customer service options to help with your HP products including the latest drivers and troubleshooting articles.

Meet the All-New HP App: One App for All Your HP Devices replacing HP ...

Jul 22, 2025 · The HP App is the next generation of HP Smart, offering a streamlined way to set up, manage, and troubleshoot all your HP printers, laptops, tablets, and accessories — all in ...

HP Instant Ink

Manage your privacy preferences for HP Instant Ink subscription services.

HP Printers & Scanners | staples.ca

Find the best HP printer or scanner for you with HP Officejet, Deskjet, and Inkjet printers for a perfect home or office print job.

Contact Official HP® Support - Canada | HP® Support

Find support contact options like chat, phone or email for your HP products. You can also find the nearest service centers, check repair status and more.

Dive into the eerie world of H.P. Lovecraft's "The Call of Cthulhu." Explore its themes

[Back to Home](#)