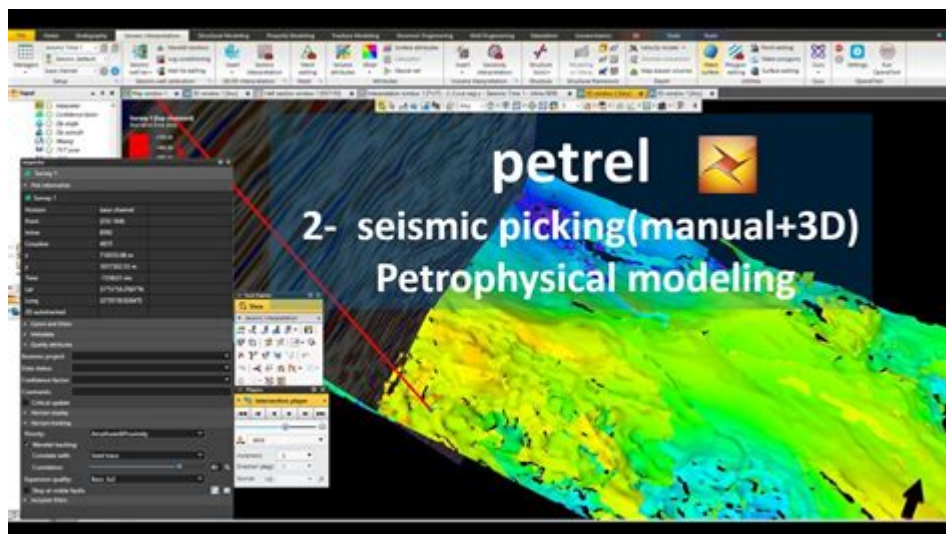


How To Use Petrel Manual



How to use Petrel Manual effectively is essential for geoscientists and engineers in the oil and gas industry. The Petrel software, developed by Schlumberger, is a powerful tool for subsurface modeling, reservoir simulation, and data management. It integrates various processes and provides a collaborative environment for professionals to work on projects efficiently. In this article, we will explore the key features of Petrel, how to navigate its manual, and tips for maximizing your use of this robust software.

Understanding the Petrel Software

Petrel is an advanced software platform that allows users to visualize and analyze subsurface data. Its primary applications include:

- Geological modeling: Creating accurate models of subsurface environments.
- Reservoir simulation: Predicting the behavior of oil and gas reservoirs over time.
- Seismic interpretation: Analyzing seismic data to identify potential hydrocarbon reserves.
- Well planning: Designing drilling programs and evaluating well performance.

As a comprehensive solution, Petrel combines multiple functionalities that enable users to make informed decisions based on detailed analyses.

Getting Started with the Petrel Manual

Navigating the Petrel manual is crucial for users looking to make the most of the software's features. Here are some steps to help you effectively utilize the manual:

1. Accessing the Manual

The Petrel manual can be accessed in several ways:

- Online Help: In the Petrel software, you can access the help documentation directly from the toolbar. This includes a searchable database of topics.
- PDF Manual: A downloadable PDF version of the manual is available on the Schlumberger website. This format is handy for offline reading and printing.
- Training Materials: Schlumberger often provides training resources, including webinars and tutorials, which can be found on their website or through authorized training centers.

2. Familiarizing Yourself with the Structure

The Petrel manual is organized into several sections, making it easier to find the information you need. Key sections include:

- Introduction: Overview of the software and its capabilities.
- User Interface: Detailed descriptions of the various tools and menus within the software.
- Workflow Guides: Step-by-step instructions for specific tasks, such as building geological models or conducting reservoir simulations.
- Reference Materials: Technical information, including algorithms and mathematical models used in Petrel.

Key Features of the Petrel Manual

To make the most of the Petrel manual, it is essential to understand its key features:

1. Search Functionality

The online help system includes a robust search function that allows users to quickly find specific topics or keywords. This feature is especially useful when you need immediate answers while working on a project.

2. Interactive Tutorials

The Petrel manual often includes interactive tutorials that guide users through various processes. These tutorials provide practical, hands-on experience and can help users become more proficient with the software.

3. Examples and Case Studies

The manual also contains examples and case studies that demonstrate how to apply Petrel in real-world scenarios. These examples can serve as valuable references when tackling similar projects.

Utilizing the Petrel Manual for Different Tasks

Understanding how to leverage the manual for specific tasks can significantly enhance your workflow. Below are common tasks and how the manual can assist you:

1. Building Geological Models

When creating geological models, refer to the manual for:

- Basic Concepts: Familiarize yourself with the geological concepts employed in Petrel, such as stratigraphy and structural geology.
- Step-by-Step Instructions: Follow the workflow guides that outline the process of building a model, including data import, grid generation, and property assignment.
- Best Practices: Review tips and best practices for ensuring accuracy and efficiency in your modeling efforts.

2. Seismic Interpretation

For seismic interpretation, the manual can help with:

- Data Preparation: Instructions on importing and preparing seismic data for analysis.
- Visualization Techniques: Guidance on utilizing visualization tools to interpret seismic data effectively.
- Integration with Other Data: Information on how to integrate seismic data with geological and petrophysical information.

3. Reservoir Simulation

To conduct reservoir simulations, use the manual for:

- Simulation Setup: Detailed steps on setting up a simulation project, including defining reservoir properties and boundary conditions.
- Parameter Calibration: Instructions for calibrating model parameters to match historical production data.
- Result Interpretation: Tips on interpreting simulation results and making informed decisions based on the output.

Tips for Maximizing Your Use of the Petrel Manual

Here are some practical tips to enhance your experience with the Petrel manual:

1. Bookmark Frequently Used Sections

As you become more familiar with the manual, consider bookmarking sections that you refer to frequently. This will save time when you need to revisit specific topics.

2. Take Notes

While going through the manual, take notes on key processes or tips that you find particularly useful. This will create a personalized reference guide tailored to your needs.

3. Participate in Community Forums

Engage with other Petrel users through forums and online communities. Sharing experiences and solutions can provide valuable insights and enhance your understanding of the software.

4. Regularly Update Your Knowledge

Petrel is continually evolving, with regular updates and new features. Make it a habit to check for updates in the manual to stay informed about the latest functionalities and improvements.

Conclusion

In summary, knowing how to use the Petrel manual effectively can greatly enhance your productivity and efficiency in using the software. By familiarizing yourself with its structure, taking advantage of its features, and applying the guidance provided for specific tasks, you can become proficient in utilizing Petrel for geological modeling, reservoir simulation, and more. Remember to engage with the community and regularly update your knowledge as you continue to explore the powerful capabilities of Petrel.

Frequently Asked Questions

What is the Petrel manual used for?

The Petrel manual provides guidance on using Petrel software for subsurface modeling, including

geological, geophysical, and reservoir simulation applications.

Where can I find the Petrel manual?

The Petrel manual can typically be found within the software itself under the Help menu, or it can be downloaded from the official Schlumberger website.

How do I navigate the Petrel manual effectively?

You can navigate the Petrel manual by using the table of contents for an overview, the index for specific topics, or the search function to find keywords quickly.

What are the key sections of the Petrel manual?

Key sections of the Petrel manual include installation instructions, user interface overview, data management, modeling techniques, and troubleshooting tips.

Are there tutorials included in the Petrel manual?

Yes, the Petrel manual often includes tutorials and practical examples to help users learn how to perform specific tasks within the software.

How can I get support if I cannot find what I need in the Petrel manual?

If you can't find what you need in the Petrel manual, you can seek support through the Schlumberger customer support portal or user forums where experienced users share advice.

Is the Petrel manual updated regularly?

Yes, the Petrel manual is updated regularly to reflect the latest software features, enhancements, and best practices as new versions of the software are released.

Can I access the Petrel manual offline?

Yes, you can download the Petrel manual as a PDF for offline access, allowing you to refer to it without an internet connection.

How do I report errors or suggest improvements to the Petrel manual?

You can report errors or suggest improvements by contacting Schlumberger support directly or through the feedback options typically provided in the manual or software.

Find other PDF article:

<https://soc.up.edu.ph/56-quote/pdf?ID=iZB92-3276&title=student-exploration-longitudinal-waves-answer-key.pdf>

[How To Use Petrel Manual](#)

Create a Gmail account - Google Help

Create an account Tip: To use Gmail for your business, a Google Workspace account might be better for you than a personal Google Account. With Google Workspace, you get increased ...

[Chat Support Help](#)

Official Chat Support Help Center where you can find tips and tutorials on using Chat Support and other answers to frequently asked questions.

Download and install Google Chrome

To use Chrome on Mac, you need macOS Big Sur 11 and up. If you don't know the admin password, drag Chrome to a place on your computer where you can make edits, like your ...

[Make Google your default search engine - Google Search Help](#)

To get results from Google each time you search, you can make Google your default search engine. Set Google as your default on your browser If your browser isn't listed below, check its ...

Get started with Google Play

What you can do with Google Play Get games for Android devices and Chromebooks. Download Google Play Games Mobile App. Rent or buy movies and TV shows. Download the Google TV ...

Printer keeps going "offline" Windows 11 - Microsoft Community

Feb 18, 2024 · My printer has worked fine until a month or two. Since then it keeps going offline. I have updated software drivers etc. I need to poke around with troubleshooters etc every time ...

M365 Copilot-created file placed at unreachable URL: - Microsoft ...

Jun 25, 2025 · When I asked M365 Copilot to generate a PPT for me, it said it had done so and placed it at a link beginning with "sandbox:/mnt/data". However, this is not a clickable link and I ...

Microsoft Support and Recovery Assistant for Office 365

Doesn't support MFA. Tried to diagnose Outlook 2016 (with ADAL enabled) that keeps asking for authentication, but the tool says I need to use an app password. Enabling ADAL means you ...

Someone sent me a contact group as an attachment. I want to ...

Someone sent me a contact group as an attachment. I want to save it in my contacts. How do I do this?

[Get started with Google Photos - Computer - Google Photos Help](#)

The activity-based personalization setting allows Google Photos to show you even more personalized memories based on how you interact with features in Photos. To further ...

[Create a Gmail account - Google Help](#)

Create an account Tip: To use Gmail for your business, a Google Workspace account might be better for you than a personal Google Account. With Google Workspace, you get increased ...

[Chat Support Help](#)

Official Chat Support Help Center where you can find tips and tutorials on using Chat Support and other answers to frequently asked questions.

Download and install Google Chrome

To use Chrome on Mac, you need macOS Big Sur 11 and up. If you don't know the admin password, drag Chrome to a place on your computer where you can make edits, like your desktop. Tip: To ...

Make Google your default search engine - Google Search Help

To get results from Google each time you search, you can make Google your default search engine. Set Google as your default on your browser If your browser isn't listed below, check its help ...

Get started with Google Play

What you can do with Google Play Get games for Android devices and Chromebooks. Download Google Play Games Mobile App. Rent or buy movies and TV shows. Download the Google TV ...

Printer keeps going "offline" Windows 11 - Microsoft Community

Feb 18, 2024 · My printer has worked fine until a month or two. Since then it keeps going offline. I have updated software drivers etc. I need to poke around with troubleshooters etc every time to ...

M365 Copilot-created file placed at unreachable URL: - Microsoft ...

Jun 25, 2025 · When I asked M365 Copilot to generate a PPT for me, it said it had done so and placed it at a link beginning with "sandbox:/mnt/data". However, this is not a clickable link and I ...

Microsoft Support and Recovery Assistant for Office 365

Doesn't support MFA. Tried to diagnose Outlook 2016 (with ADAL enabled) that keeps asking for authentication, but the tool says I need to use an app password. Enabling ADAL means you don't ...

Someone sent me a contact group as an attachment. I want to save ...

Someone sent me a contact group as an attachment. I want to save it in my contacts. How do I do this?

Get started with Google Photos - Computer - Google Photos Help

The activity-based personalization setting allows Google Photos to show you even more personalized memories based on how you interact with features in Photos. To further personalize ...

Discover how to use the Petrel manual effectively with our comprehensive guide. Enhance your skills and optimize workflows. Learn more today!

[Back to Home](#)