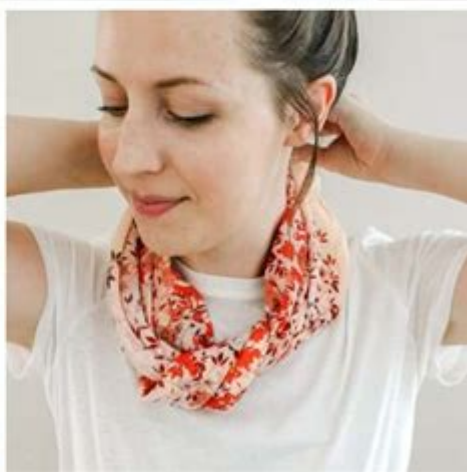


How To Wear A Scarf Necklace



How to wear a scarf necklace is a question many fashion enthusiasts ponder as they look to add

versatility and style to their outfits. Scarf necklaces combine the elegance of traditional scarves with the chic appeal of statement jewelry, making them a perfect accessory for any occasion. In this article, we will explore various ways to wear a scarf necklace, discuss the types available, and provide tips on how to style them for different occasions. Whether you're dressing up for a formal event or looking for a casual accessory, a scarf necklace can elevate your look effortlessly.

Understanding Scarf Necklaces

Before diving into the different ways to wear a scarf necklace, it's essential to understand what they are and how they differ from regular scarves. A scarf necklace merges the lightweight fabric of a scarf with a structured design, often featuring embellishments such as beads, chains, or metal rings. This combination allows for a unique accessory that can be styled in various ways.

Types of Scarf Necklaces

1. **Infinity Scarf Necklaces:** These are continuous loops of fabric that can be doubled or tripled around the neck, creating a layered effect. They often feature a variety of prints and textures, making them versatile.
2. **Lariat Scarf Necklaces:** Long and slender, lariat scarves can be tied in knots or loops, allowing for creativity in styling. They provide an elegant draping effect and can be worn in multiple ways.
3. **Multi-Strand Scarf Necklaces:** These feature several strands of scarf material, often combined with beads or chains. They add significant volume and texture, making them a statement piece.
4. **Metal and Fabric Combinations:** Some scarf necklaces incorporate metal elements with fabric, offering a modern and edgy look. These typically have a structured design and can be worn as a choker or a longer necklace.

How to Wear a Scarf Necklace

Now that we have an understanding of what scarf necklaces are, let's explore the various ways to wear them. Each method offers a unique style that can suit different occasions and outfits.

1. Classic Loop

The classic loop is one of the simplest and most elegant ways to wear a scarf necklace.

- Step 1: Take your scarf necklace and hold it at the center.
- Step 2: Drape it around your neck, allowing both ends to hang down your chest.
- Step 3: Adjust the length of each side to your preference, ensuring the ends are even or styled asymmetrically.

This method works well with both casual and formal outfits, adding a touch of sophistication without overwhelming the look.

2. Double Loop

For a more layered look, the double loop is an excellent choice.

- Step 1: Start with the classic loop method.
- Step 2: Instead of leaving the ends hanging, take one end of the scarf necklace and wrap it around your neck again.
- Step 3: Secure it in place, either by tucking it under the other side or allowing it to hang loosely.

This style adds volume and can enhance the overall silhouette, particularly when paired with a fitted top or dress.

3. Knotted Style

For a playful and artistic look, consider the knotted style.

- Step 1: Drape the scarf necklace around your neck as you would in the classic loop.
- Step 2: Take both ends and tie them in a loose knot at the front.
- Step 3: Adjust the knot to your desired tightness and position.

This method allows for personal expression and can add a bohemian flair to your outfit.

4. Asymmetrical Drape

The asymmetrical drape is ideal for those looking to create an eye-catching look.

- Step 1: Drape the scarf necklace around your neck in the classic loop style.
- Step 2: Allow one end to hang longer than the other, creating an asymmetrical effect.
- Step 3: Adjust the length of the longer side to ensure it complements your outfit.

This style works particularly well with off-the-shoulder tops or dresses, drawing attention to the neckline.

5. Layered with Other Necklaces

For a trendy, layered look, you can combine your scarf necklace with other types of necklaces.

- Step 1: Start with your scarf necklace draped around your neck using the classic loop or double loop method.
- Step 2: Choose a couple of shorter necklaces with different lengths and textures to layer on top.

- Step 3: Ensure the colors and styles complement each other for a cohesive look.

This method is perfect for casual outings, adding depth and interest to your ensemble.

Styling Tips for Different Occasions

Now that you know how to wear a scarf necklace in various ways, let's look at how to style them for different occasions.

Casual Outings

- Pair with a T-Shirt: Combine a vibrant scarf necklace with a simple t-shirt and jeans for a laid-back yet stylish look.
- Accessorize with Denim: A scarf necklace works beautifully with denim jackets or chambray shirts, adding texture to your outfit.
- Go for Fun Prints: Choose scarves with playful patterns to add a fun element to your casual attire.

Work Attire

- Opt for Subtle Colors: For a professional setting, select scarf necklaces in neutral or muted tones that complement your work outfit.
- Layer with Blazers: Drape your scarf necklace over a fitted blazer for a polished appearance.
- Keep It Simple: Avoid overly complicated styles; a classic loop or double loop is often best for the workplace.

Evening Events

- Choose Statement Pieces: For a night out, opt for more dramatic scarf necklaces that feature bold colors or intricate designs.
- Pair with Elegant Dresses: A scarf necklace can add a touch of glamour to evening gowns or cocktail dresses.
- Experiment with Textures: Combining a silk scarf necklace with a sequined outfit can create an eye-catching contrast.

Caring for Your Scarf Necklace

To keep your scarf necklace looking beautiful, proper care is essential.

- Store Properly: Avoid tangling by storing your scarf necklace flat or hanging it up on a jewelry organizer.
- Clean Gently: Use a soft cloth to wipe off any dust or dirt. If the fabric is washable, follow the care

instructions provided.

- **Avoid Excessive Pulling:** Be gentle when putting on or taking off your scarf necklace to prevent stretching or damage.

Conclusion

In conclusion, learning how to wear a scarf necklace can enhance your fashion repertoire and offer endless styling possibilities. From classic loops to layered looks, scarf necklaces provide versatility suitable for any occasion. By understanding the various types available and incorporating styling tips tailored to different events, you can confidently accessorize any outfit. Remember to care for your scarf necklace properly to ensure it remains a cherished part of your accessory collection. With a scarf necklace, you can express your unique style and make a statement wherever you go.

Frequently Asked Questions

What is a scarf necklace?

A scarf necklace is a versatile accessory that combines the elegance of a scarf with the structured look of a necklace. It can be styled in various ways, often featuring a long, thin scarf that can be tied or wrapped around the neck.

How can I style a scarf necklace for a casual outfit?

For a casual outfit, you can simply drape the scarf necklace around your neck and let it hang loosely. Pair it with a basic tee and jeans for a laid-back yet stylish look.

Can a scarf necklace be worn with formal attire?

Yes, a scarf necklace can elevate formal attire. Try tying it in a chic knot or loop it around your neck to add a touch of sophistication to dresses or blouses.

What types of scarves work best as necklace scarves?

Lightweight, silky scarves work best as necklace scarves due to their drape and flexibility. Look for scarves with vibrant colors or patterns to make a statement.

Are there specific knot styles for wearing a scarf necklace?

Yes, popular knot styles include the basic knot, the infinity loop, and the twisted wrap. Each style offers a different look and can be adjusted for comfort and aesthetics.

How do I maintain the shape of my scarf necklace?

To maintain its shape, store your scarf necklace flat or rolled up rather than hanging. Avoid heavy pressure or folding to prevent creases and damage to the fabric.

Can I wear a scarf necklace in different seasons?

Absolutely! A scarf necklace can be adapted for all seasons. In warmer months, opt for lightweight materials, while in colder months, choose thicker fabrics that also provide warmth.

Find other PDF article:

<https://soc.up.edu.ph/47-print/pdf?dataid=NgS51-9476&title=poems-on-long-distance-relationship.pdf>

How To Wear A Scarf Necklace

□□□□□□□□□□ - WEAR

ZOZO WEAR 1400 ...

Dickies/13 ... - WEAR

Dickies/13 shorts 320 ...

BURBERRY□□□□/□□□□□□□□□□... - WEAR

BURBERRY 840 ...

[illegible]

320

[illegible]

3700 ...

□□□□□□□□□□ - *WEAR*

[illegible]

Dickies/ 13 ... - WEAR

Dickies/13 shorts

BURBERRY  ... - WEAR

BURBERRY 840 ...

320 ...

[illegible][illegible]

Discover how to wear a scarf necklace with style! Explore versatile looks and tips to elevate your outfit. Learn more and transform your accessories today!

[Back to Home](#)