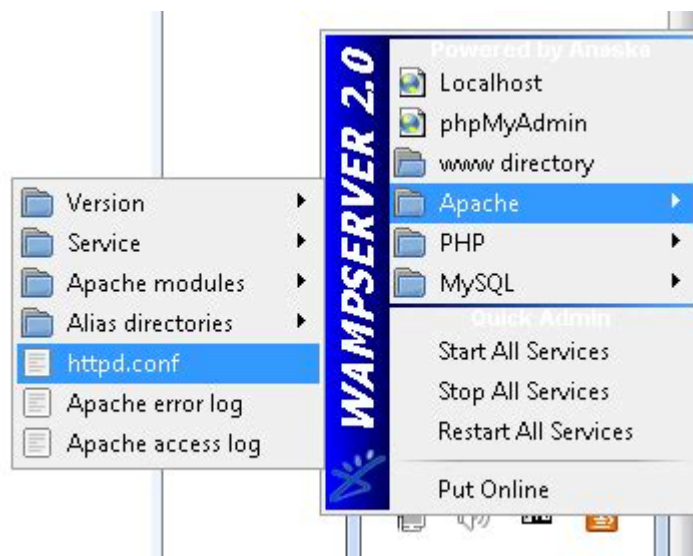


How To Use Wamp Server



WAMP Server is a powerful tool that allows developers to create and manage web applications on a local server environment. It stands for Windows, Apache, MySQL, and PHP, and it provides a simplified way of managing a development environment for building and testing web applications. In this article, we will explore how to use WAMP Server effectively, covering installation, configuration, and common use cases.

What is WAMP Server?

WAMP Server is a software stack that includes the following components:

- Windows: The operating system on which WAMP runs.
- Apache: The web server software that handles requests and serves web pages.
- MySQL: The database management system used for storing and retrieving data.
- PHP: The programming language that allows developers to create dynamic web pages.

With WAMP Server, developers can set up a local environment to develop and test applications before deploying them to a live server. This is particularly useful for web developers who need to ensure their applications function correctly in a controlled setting.

Installing WAMP Server

To get started with WAMP Server, you first need to install it on your Windows machine. Follow these steps for a successful installation:

Step 1: Download WAMP Server

1. Visit the official WAMP Server website:
[WAMP Server](http://www.wampserver.com/en/).
2. Click on the "Download" section.
3. Choose the version compatible with your system (32-bit or 64-bit).

Step 2: Run the Installer

1. Locate the downloaded file (usually in your Downloads folder).
2. Double-click the installer to run it.
3. Follow the on-screen prompts to agree to the license agreement.
4. Choose the destination folder where you want to install WAMP Server (the default is usually fine).

Step 3: Select Default Browser

1. During installation, you will be prompted to select your default web browser. Choose your preferred browser (e.g., Chrome, Firefox).
2. Click "Next" to proceed.

Step 4: Choose SMTP Server

1. WAMP Server will ask for an SMTP server for sending emails. You can leave it as default if you do not plan to use this feature.
2. Click "Next" and then "Install" to complete the installation process.

Step 5: Launch WAMP Server

1. After installation, you can start WAMP Server by finding the WAMP icon on your desktop or in the Start Menu.
2. Double-click the icon. You should see a green WAMP icon in your system tray, indicating that the server is running properly.

Configuring WAMP Server

Once you have installed WAMP Server, you may need to configure it to suit your development needs.

Step 1: Accessing the WAMP Server Dashboard

1. Left-click on the WAMP icon in the system tray.
2. From the menu, select "phpMyAdmin" to access the MySQL database management interface.
3. You can also select "Localhost" to view the WAMP Server dashboard in your web browser.

Step 2: Changing Apache Port

By default, WAMP Server runs on port 80. If you have another application using this port (like Skype), you may need to change it.

1. Left-click on the WAMP icon.
2. Go to "Apache" > "httpd.conf" to open the configuration file.
3. Look for the line ``Listen 80`` and change it to ``Listen 8080`` (or another port number).
4. Change the line ``ServerName localhost:80`` to ``ServerName localhost:8080``.
5. Save the file and restart WAMP Server for the changes to take effect.

Step 3: Managing MySQL User Accounts

1. Open phpMyAdmin by left-clicking the WAMP icon and selecting "phpMyAdmin."
2. The default username is "root," and the password is blank.
3. After logging in, you can create new databases, manage users, and set permissions.

Creating Your First Project

Now that you have WAMP Server installed and configured, let's create your first web project.

Step 1: Creating a Project Folder

1. Navigate to the WAMP server directory (usually ``C:\wamp64\www`` for 64-bit installations).
2. Create a new folder for your project (e.g., ``my_first_project``).

Step 2: Creating an HTML File

1. Inside your project folder, create a new file named `index.php`.
2. Open the file in a text editor and add the following PHP code:

```
```php
<?php
echo "
```

## Welcome to My First WAMP Project

```
";
?>
```
```

3. Save the changes.

Step 3: Accessing Your Project in a Browser

1. Open a web browser and type `http://localhost/my_first_project/index.php` in the address bar.
2. You should see the message "Welcome to My First WAMP Project" displayed on the page.

Common Uses of WAMP Server

WAMP Server is widely used by developers for various purposes. Here are some common use cases:

1. Developing PHP Applications

WAMP Server provides an excellent environment for developing PHP applications. You can test your code in real-time and see changes instantly.

2. Learning and Practicing Web Development

If you are a beginner in web development, WAMP Server is a great tool to practice HTML, CSS, PHP, and MySQL without needing a live server.

3. Testing Database-Driven Applications

You can create and manage MySQL databases using phpMyAdmin, allowing you to

test database-driven applications locally before deployment.

4. Hosting a Local Development Site

WAMP Server allows you to create a local development site that can be accessed by other devices on the same network, making it easier for team collaboration.

Troubleshooting Common Issues

While using WAMP Server, you may encounter some common issues. Here are a few troubleshooting tips:

1. WAMP Icon is Orange or Red

If the WAMP icon is orange or red, it indicates that Apache or MySQL services are not running. To resolve this:

- Check if another application is using port 80.
- Restart WAMP Server.
- Check the Apache error logs via the WAMP menu.

2. "Access Denied" Error in phpMyAdmin

If you encounter an "Access Denied" error when trying to log in to phpMyAdmin:

- Ensure you are using the correct username and password (default: root with no password).
- Check the `config.inc.php` file in the `phpMyAdmin` directory for user settings.

3. PHP Errors

If your PHP scripts are not working as expected:

- Check your PHP error logs for messages that can help diagnose the issue.
- Ensure your PHP code is correctly written and free of syntax errors.

Conclusion

Using WAMP Server makes local web development easy and efficient. By following the steps outlined in this article, you can install and configure WAMP Server, create your first project, and troubleshoot common issues. Whether you are a beginner looking to learn or an experienced developer needing a local test environment, WAMP Server is an invaluable tool in your web development toolkit. Happy coding!

Frequently Asked Questions

What is WAMP server and why should I use it?

WAMP server is a Windows-based web development environment that allows you to create web applications with Apache2, PHP, and MySQL. It's useful for developers who want to test their applications locally before deploying them to a live server.

How do I install WAMP server on my Windows machine?

To install WAMP server, download the latest version from the official WAMP server website. Once downloaded, run the installer and follow the on-screen instructions to complete the installation. Make sure to select the appropriate PHP version and install any required dependencies.

How can I start and stop the WAMP server?

To start the WAMP server, double-click the WAMP icon on your desktop or use the Start menu. Once it's running, the WAMP icon in the system tray will turn green. To stop the server, right-click the WAMP icon and select 'Stop All Services'.

How do I access my local website using WAMP server?

You can access your local website by opening a web browser and typing 'http://localhost/' in the address bar. If you have created a project folder inside the 'www' directory of WAMP, you can access it by typing 'http://localhost/your_project_folder_name'.

How can I create a new database using WAMP server?

To create a new database, first, open phpMyAdmin by navigating to 'http://localhost/phpmyadmin' in your browser. Log in (default username is 'root' and password is blank). Then, click on the 'Databases' tab, enter your desired database name, and click 'Create'.

What should I do if the WAMP server icon is orange or red?

If the WAMP server icon is orange or red, it indicates that some services are not running properly. Check the Apache and MySQL error logs for more details. Common issues include port conflicts (e.g., with Skype) or missing dependencies. Ensure that the required ports are free and restart the services.

Find other PDF article:

<https://soc.up.edu.ph/26-share/pdf?docid=kVx23-6437&title=handwriting-without-tears-worksheet.pdf>

How To Use Wamp Server

Create a Gmail account - Google Help

Create an account Tip: To use Gmail for your business, a Google Workspace account might be better for you than a personal Google Account. With Google Workspace, you get increased ...

Chat Support Help

Official Chat Support Help Center where you can find tips and tutorials on using Chat Support and other answers to frequently asked questions.

Download and install Google Chrome

To use Chrome on Mac, you need macOS Big Sur 11 and up. If you don't know the admin password, drag Chrome to a place on your computer where you can make edits, like your ...

Make Google your default search engine - Google Search Help

To get results from Google each time you search, you can make Google your default search engine. Set Google as your default on your browser If your browser isn't listed below, check its ...

Get started with Google Play

What you can do with Google Play Get games for Android devices and Chromebooks. Download Google Play Games Mobile App. Rent or buy movies and TV shows. Download the Google TV ...

Printer keeps going "offline" Windows 11 - Microsoft Community

Feb 18, 2024 · My printer has worked fine until a month or two. Since then it keeps going offline. I have updated software drivers etc. I need to poke around with troubleshooters etc every time ...

M365 Copilot-created file placed at unreachable URL: - Microsoft ...

Jun 25, 2025 · When I asked M365 Copilot to generate a PPT for me, it said it had done so and placed it at a link beginning with "sandbox:/mnt/data". However, this is not a clickable link and I ...

Microsoft Support and Recovery Assistant for Office 365

Doesn't support MFA. Tried to diagnose Outlook 2016 (with ADAL enabled) that keeps asking for

authentication, but the tool says I need to use an app password. Enabling ADAL means you ...

Someone sent me a contact group as an attachment. I want to ...

Someone sent me a contact group as an attachment. I want to save it in my contacts. How do I do this?

Get started with Google Photos - Computer - Google Photos Help

The activity-based personalization setting allows Google Photos to show you even more personalized memories based on how you interact with features in Photos. To further ...

Create a Gmail account - Google Help

Create an account Tip: To use Gmail for your business, a Google Workspace account might be better for you than a ...

Chat Support Help

Official Chat Support Help Center where you can find tips and tutorials on using Chat Support and other answers to ...

Download and install Google Chrome

To use Chrome on Mac, you need macOS Big Sur 11 and up. If you don't know the admin password, drag Chrome to a ...

Make Google your default search engine - Google Search Help

To get results from Google each time you search, you can make Google your default search engine. Set Google as your ...

Get started with Google Play

What you can do with Google Play Get games for Android devices and Chromebooks. Download Google Play ...

Learn how to use WAMP Server effectively with our step-by-step guide

[Back to Home](#)