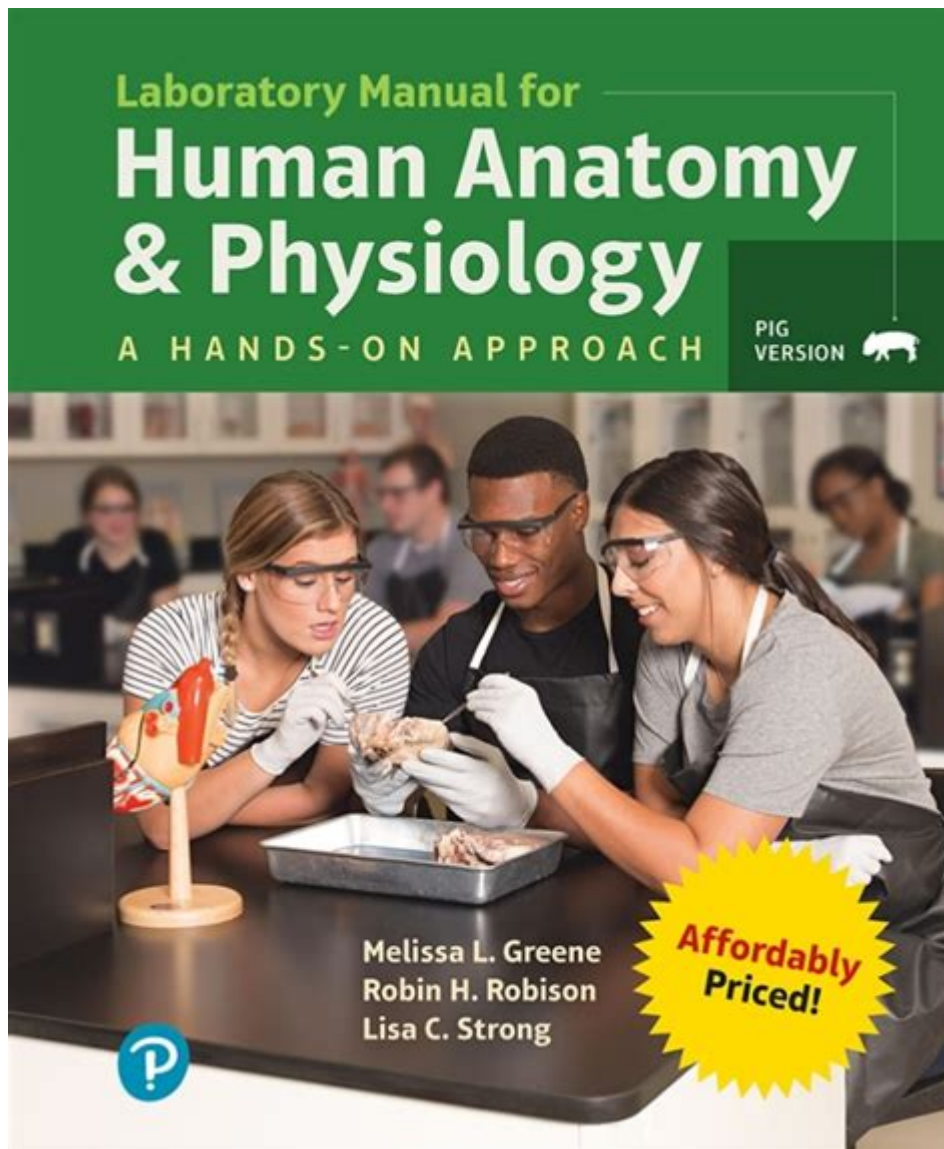


Human Anatomy And Physiology Lab Manual 13th Edition



Human Anatomy and Physiology Lab Manual 13th Edition is an essential resource for students and educators in the fields of biology, health sciences, and medicine. This comprehensive manual provides a hands-on approach to understanding the structure and function of the human body. By engaging with the content, students can deepen their knowledge of human anatomy and physiology through practical experiments, dissections, and in-depth lab activities. This article will explore the key features of the 13th edition, highlight its educational benefits, and discuss how it can enhance the learning experience for students.

Overview of the Human Anatomy and Physiology Lab Manual 13th Edition

The 13th edition of the Human Anatomy and Physiology Lab Manual is a meticulously updated version that reflects the latest advancements in the study of human biology. It is designed to cater to a diverse audience, including undergraduate students, educators, and healthcare professionals.

Key Features

This edition includes several notable features that enhance its usability and effectiveness:

- **Comprehensive Coverage:** The manual covers a wide range of topics, including the muscular, skeletal, nervous, and cardiovascular systems. Each section provides detailed descriptions and illustrations to help students visualize complex structures.
- **Engaging Lab Activities:** The manual includes hands-on laboratory exercises that encourage active learning. These activities often involve dissections, microscopy, and experiments that foster a deeper understanding of anatomical and physiological concepts.
- **Updated Illustrations:** High-quality images and diagrams accompany each chapter, providing students with clear visual aids that complement the text and facilitate learning.
- **Critical Thinking Questions:** Each lab exercise is paired with questions that promote critical thinking and application of knowledge, ensuring that students do not merely memorize facts but truly understand the material.
- **Safety Guidelines:** The manual emphasizes laboratory safety, outlining best practices and protocols to ensure a safe learning environment for all students.

Importance of Anatomy and Physiology in Education

Understanding human anatomy and physiology is crucial for students pursuing careers in healthcare, physical therapy, nursing, and related fields. The Human Anatomy and Physiology Lab Manual 13th Edition serves as a foundational tool to prepare students for advanced study in these disciplines.

Real-World Applications

Knowledge of anatomy and physiology is not only important academically but also has real-world applications. Here are some examples:

1. **Clinical Practice:** Healthcare professionals utilize their understanding of human anatomy and physiology to diagnose and treat patients

effectively.

2. **Research and Development:** Scientists rely on anatomical and physiological knowledge to conduct research and develop new medical technologies and treatments.
3. **Education and Advocacy:** Educators use this knowledge to teach future generations about health and wellness, promoting public health initiatives.
4. **Emergency Response:** First responders apply their understanding of the human body to provide immediate care in critical situations.

Structure of the Lab Manual

The Human Anatomy and Physiology Lab Manual 13th Edition is thoughtfully organized to facilitate learning. Each chapter typically follows a consistent structure that enhances comprehension.

Typical Chapter Breakdown

Each chapter generally includes the following components:

- **Introduction:** An overview of the anatomical and physiological concepts covered in the chapter.
- **Objectives:** Clear learning objectives that outline what students are expected to achieve by the end of the lab.
- **Materials List:** A detailed list of materials and equipment needed for the lab exercises.
- **Procedures:** Step-by-step instructions for conducting experiments or dissections.
- **Analysis and Discussion:** Questions and prompts that encourage students to analyze their findings and engage in discussion.
- **Conclusion:** A summary that reinforces the key points and concepts from the lab experience.

Enhancing the Learning Experience

The Human Anatomy and Physiology Lab Manual 13th Edition not only provides valuable information but also enhances the overall learning experience for students. Here are some ways it achieves this:

Interactive Learning

The manual's emphasis on hands-on laboratory activities allows students to actively engage with the material. This interactive approach has several benefits:

- **Improved Retention:** Students are more likely to remember information when they can connect it to real-life experiences.
- **Development of Practical Skills:** Hands-on activities help students develop essential laboratory skills that are crucial for their future careers.
- **Collaboration:** Working in lab groups fosters teamwork and communication skills, which are vital in healthcare settings.

Supporting Diverse Learning Styles

The manual accommodates various learning styles by incorporating different teaching methods. Visual learners benefit from diagrams and illustrations, while kinesthetic learners gain knowledge through hands-on activities. Additionally, the inclusion of critical thinking questions caters to analytical learners, ensuring a well-rounded educational experience.

Conclusion

The **Human Anatomy and Physiology Lab Manual 13th Edition** is an invaluable resource for students and educators alike. Its comprehensive coverage, engaging lab activities, and emphasis on critical thinking make it an essential tool in the study of human biology. By providing students with the opportunity to explore and understand the complexities of the human body, this manual plays a crucial role in preparing future healthcare professionals for successful careers. Whether you are a student looking to deepen your understanding or an educator seeking to enhance your curriculum, this lab manual is a worthy investment in the journey of anatomical and physiological exploration.

Frequently Asked Questions

What are the main features of the 'Human Anatomy and Physiology Lab Manual 13th Edition'?

The 13th edition includes updated illustrations, enhanced laboratory exercises, and new content that reflects the latest research in anatomy and physiology.

How does the 13th edition differ from previous editions of the lab manual?

This edition features revised lab activities, improved clarity in instructions, and additional online resources for both students and instructors.

What types of laboratory exercises are included in the 13th edition?

The manual includes exercises on histology, dissection, physiological experiments, and models to help students understand anatomical structures and functions.

Is there an online component available for the 13th edition of the lab manual?

Yes, the 13th edition offers access to online resources, including videos, quizzes, and virtual lab simulations to enhance learning.

Who is the target audience for the 'Human Anatomy and Physiology Lab Manual 13th Edition'?

The manual is designed for undergraduate students taking courses in human anatomy and physiology, particularly those in health and medical fields.

What is the recommended approach to using the lab manual effectively?

Students should read the related chapters in their anatomy and physiology textbooks, follow the lab procedures carefully, and engage in discussions with peers and instructors.

Are there any specific safety guidelines outlined in the 13th edition?

Yes, the manual includes comprehensive safety guidelines to ensure a safe laboratory environment, including proper handling of specimens and use of equipment.

What resources are included for instructors in the 13th edition?

Instructors receive access to a comprehensive instructor's manual, answer keys, and teaching tips to facilitate effective lab sessions.

Can the lab manual be used for online or hybrid courses?

Yes, the manual is adaptable for online and hybrid courses, with exercises and resources that can be integrated into digital learning platforms.

What is the importance of hands-on lab work as

emphasized in the 13th edition?

Hands-on lab work is crucial for reinforcing theoretical knowledge, developing practical skills, and enhancing understanding of complex anatomical and physiological concepts.

Find other PDF article:

<https://soc.up.edu.ph/07-post/Book?trackid=atF51-2721&title=arkshire-financial-pyramid-scheme.pdf>

Human Anatomy And Physiology Lab Manual 13th Edition

Please verify the CAPTCHA before proceed

Please verify the CAPTCHA before proceed

ms? -

220-240 150 167 5% ...

Human/humans -

Human/humans [] [] human/humans Human ... 8

person/people/human being/man/human ...

person persons eg: she's an interesting person. people there are so many people travelling here. people peoples How many different peoples are in China human human research/human activities human being ...

CURSOR sign in -

CURSOR sign in Can't verify t...

Mankind, Human, Man, Human-being? -

human: a human being, especially a person as distinguished from an animal or (in science fiction) an alien human-being: a man, woman, or child of the species Homo sapiens (), distinguished from other animals by superior mental development, power of articulate speech, and upright stance humankind: human beings considered collectively (used as a neutral alternative to ...

sci -

InVisor ~ SCI/SSCI SCOPUS CPCI/EI ta invisor003 ...

stackoverflow ...

stackoverflow

14 192ms ...

