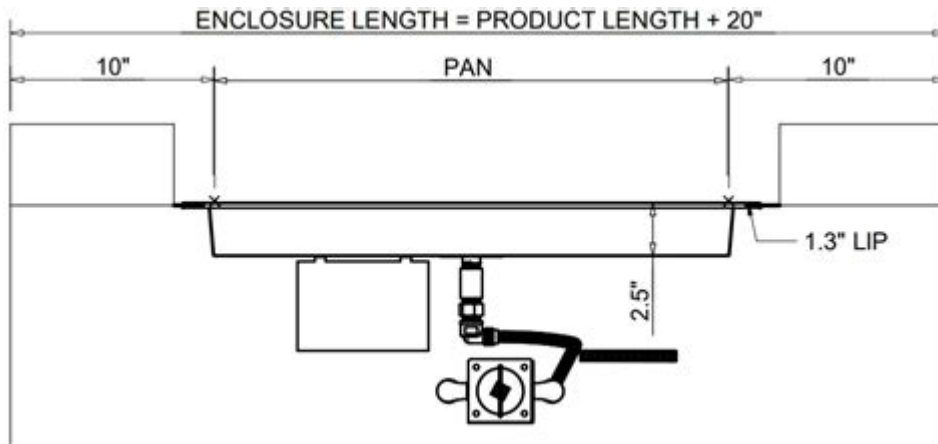


Hpc Fire Pit Manual



HPC Fire Pit Manual

Fire pits have become a popular addition to outdoor living spaces, providing warmth, ambiance, and a gathering place for friends and family. The HPC (Hearth Products Controls) fire pit is a versatile and high-quality option that many homeowners choose to enhance their outdoor experience. This article will cover everything you need to know about the HPC fire pit, including its features, installation process, maintenance tips, and troubleshooting advice.

Understanding HPC Fire Pits

HPC fire pits are designed for both residential and commercial use. They are known for their reliability, safety features, and aesthetic appeal. Here are some key aspects of HPC fire pits:

Features of HPC Fire Pits

1. Variety of Designs: HPC offers a wide range of fire pit styles, from traditional wood-burning models to modern gas fire pits.
2. Material Quality: Constructed from durable materials, such as stainless steel and aluminum, these fire pits are built to withstand the elements.
3. Safety Features: Many HPC fire pits come equipped with safety shut-off valves, flame sensors, and other features to ensure safe operation.
4. Ease of Use: The ignition systems are user-friendly, allowing for a quick and hassle-free lighting process.
5. Customizable Options: HPC provides various accessories and customization options, including fire glass, burners, and covers.

Installation of HPC Fire Pits

Installing an HPC fire pit can be a straightforward process if you follow the appropriate steps. Here is a guide to ensure proper installation:

Preparation Steps

1. Choose a Location: Select a suitable spot for your fire pit, ensuring it is at least 10-15 feet away from structures, trees, or any flammable materials.
2. Check Local Regulations: Before installation, check local codes and regulations regarding fire pits. Some areas may have restrictions on open flames or require permits.
3. Gather Tools and Materials: You will need the following tools and materials:
 - Measuring tape
 - Level
 - Shovel
 - Gravel or sand
 - Fire pit kit (burner, gas line, etc.)
 - Safety equipment (gloves, goggles)

Installation Steps

1. Prepare the Ground:
 - Clear the area of grass, debris, and any obstacles.
 - Level the ground to ensure a stable base for your fire pit.
2. Build a Base:
 - Depending on your fire pit design, you may need to create a base using gravel or sand to allow for proper drainage.
 - Lay down a layer of gravel or sand, approximately 2-4 inches deep, and level it.
3. Install the Fire Pit:
 - Follow the manufacturer's instructions for assembling the fire pit. Most HPC fire pits come with a detailed manual.
 - If using a gas fire pit, connect the gas line according to the provided guidelines. Ensure all connections are secure and leak-free.
4. Test the Setup:
 - Before lighting the fire pit, check for gas leaks using a solution of soap and water on the connections.
 - Turn on the gas and ignite the burner with a long lighter or match, following safety procedures.
5. Final Touches:
 - Add decorative fire glass or stones to the fire pit if desired.
 - Place a protective cover over the fire pit when not in use to prolong its life.

Maintenance of HPC Fire Pits

Proper maintenance is crucial to ensure the longevity and safe operation of your HPC fire pit. Consider the following maintenance tips:

Regular Cleaning

- Remove Debris: After use, allow the fire pit to cool down before removing any ash, debris, or leftover materials.
- Clean the Burner: Periodically inspect and clean the burner to prevent blockage. Use a soft brush to remove dirt and debris.
- Check for Corrosion: Examine the fire pit for any signs of rust or corrosion, especially if it is made of metal. Treat or replace affected areas as necessary.

Inspect Gas Connections

- Regularly check all gas connections for leaks.
- Ensure that hoses are not cracked or damaged.
- Replace any worn or damaged parts to maintain safe operation.

Seasonal Care

- Winter Storage: If you live in an area with harsh winters, consider storing your fire pit indoors to protect it from snow and ice.
- Covering: Use a weather-resistant cover when the fire pit is not in use to prevent water and debris from accumulating.

Troubleshooting Common Issues

Even with careful maintenance, you may encounter some issues with your HPC fire pit. Here are common problems and how to resolve them:

Low Flame or No Flame

- Check Gas Supply: Ensure that the gas supply is turned on and that there are no leaks in the line.
- Inspect the Burner: Clean the burner ports to ensure they are not blocked.
- Adjust the Regulator: Sometimes, adjusting the gas pressure regulator can help increase the flame height.

Uneven Flames

- Level the Fire Pit: Ensure the fire pit is level and properly installed to avoid uneven burning.
- Clean Burner: Blockages in the burner can cause uneven flames; clean it thoroughly.

Ignition Issues

- Check Ignition System: If your fire pit has an electronic ignition, inspect the batteries and connections.
- Manual Ignition: If the electronic ignition fails, you can always resort to manual lighting with a long lighter or match.

Conclusion

HPC fire pits are an excellent investment for anyone looking to enhance their outdoor living space. With their variety of designs, safety features, and ease of use, they can provide years of enjoyment. Proper installation and maintenance are essential for safety and longevity. By following the guidelines in this HPC fire pit manual, you can ensure a reliable and enjoyable experience for all your outdoor gatherings. Whether for warmth on a chilly evening or for creating an inviting atmosphere, an HPC fire pit can be the centerpiece of your outdoor retreat.

Frequently Asked Questions

What safety precautions should I take when using my HPC fire pit?

Always ensure that your fire pit is placed on a stable, non-flammable surface. Keep a safe distance from flammable materials, and have a fire extinguisher or water source nearby. Never leave the fire unattended.

How do I properly light my HPC fire pit for the first time?

Refer to the manual for specific instructions, but generally, you should ensure all gas connections are secure, turn on the gas, and use a long lighter to ignite the burner while standing at a safe distance.

What maintenance is required for my HPC fire pit?

Regularly inspect and clean the burner and ignition system, check for gas leaks, and ensure the fire pit is free from debris. Follow the manual for detailed maintenance schedules.

Can I use wood logs in my HPC fire pit?

Most HPC fire pits are designed for propane or natural gas use. Using wood logs can damage the fire pit and void the warranty, so always check the manual for compatibility.

What should I do if my HPC fire pit won't ignite?

Check the gas supply and ensure the ignition system is functioning. Inspect for any blockages in the burner. If the problem persists, refer to the troubleshooting section of the manual or contact customer support.

Is it safe to use my HPC fire pit during windy conditions?

It's generally advisable to avoid using the fire pit in strong winds, as they can cause flames to flare up unexpectedly. Always check the weather before using the fire pit and follow the manual's guidelines.

How do I winterize my HPC fire pit?

Clean the fire pit thoroughly, disconnect the gas supply, and store it in a dry location if possible. If left outside, cover it with a waterproof cover to protect it from the elements.

What types of fuel can I use with my HPC fire pit?

HPC fire pits typically use either propane or natural gas. Always refer to the manual to confirm the fuel type suitable for your specific model.

Find other PDF article:

<https://soc.up.edu.ph/54-tone/Book?dataid=1SZ07-4950&title=small-boat-design-for-beginners.pdf>

Hpc Fire Pit Manual

¶ HPC ¶ High Performance Computing ¶ ¶ ¶ ¶ - ¶

HPC (High Performance Computing) 3 GHz 30 HPC ...

□□HPC□High Performance Computing□□□□□□ - □□

□ HPC □ □ □ GPU □ □ □ □ □ □ □ Intersect360 □ □ 50 □ □ □ □ □ □ □ (HPC) □ □ □ □ □ □ □ GPU □ □ □ □ □ □

□□□□□□□□□□□□□□ - □□

CS HPC 815

-

```

#####
HPC#####HPC#####

```

☐ — ☐

_____ - _____

paper verilog cuda "C++
io paper idea hpc ...

ansys cpu 25% ...

CAE ANSYS WORKBENCH CPU 30

workbenchCAECPUCPUWorkbenchCPU
ANSYS WORKBENCH ...

-
HDMI

AI-
Operator AI
Kernel Tensor ...

hpc-
hpc c/c++linuxc++hpc
... 315

HPCWindows or Linux
HPCLinux1Windows...

HPCHigh Performance Computing-
HPC (High Performance Computing) 3 GHz
...

HPCHigh Performance Computing-
HPCGPUIntersect36050(HPC)GPU

-
CSHPC 815

-
HPC
...

-
paperverilogcudac++
...

ansyscpu25%
CAEANSYS WORKBENCHCPU30
workbench ...

-
HDMI

AI-
Operator AI
...

hpc-
hpc c/c++linuxc++hpc
... ..

HPCWindows or Linux

