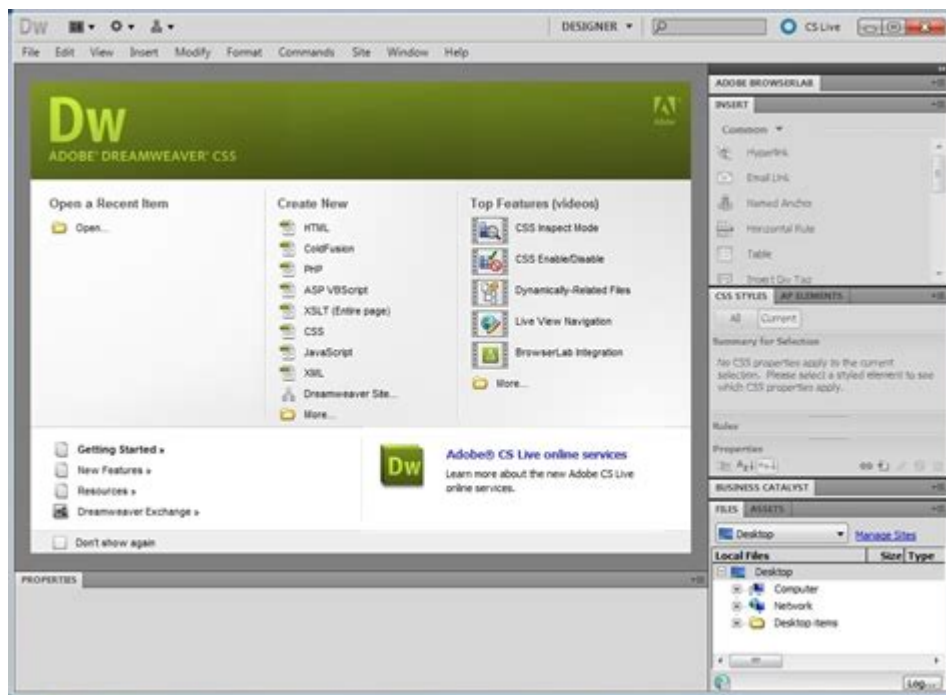


How To Use Adobe Dreamweaver Cs5



HOW TO USE ADOBE DREAMWEAVER CS5 IS A QUESTION THAT MANY BUDDING WEB DEVELOPERS AND DESIGNERS ASK AS THEY EMBARK ON THEIR JOURNEY TO CREATE STUNNING WEBSITES. ADOBE DREAMWEAVER CS5 IS A POWERFUL WEB DEVELOPMENT TOOL THAT OFFERS A COMPREHENSIVE SET OF FEATURES FOR DESIGNING, CODING, AND MANAGING WEBSITES. IN THIS ARTICLE, WE WILL EXPLORE THE VARIOUS FUNCTIONALITIES OF DREAMWEAVER CS5, GUIDING YOU THROUGH THE ESSENTIAL STEPS TO MAKE THE MOST OUT OF THIS SOFTWARE.

GETTING STARTED WITH ADOBE DREAMWEAVER CS5

BEFORE DIVING INTO HOW TO USE ADOBE DREAMWEAVER CS5, IT'S ESSENTIAL TO UNDERSTAND ITS INTERFACE AND FEATURES. THE PROGRAM IS DESIGNED TO PROVIDE BOTH A VISUAL (WYSIWYG) AND CODE EDITING EXPERIENCE, MAKING IT AN EXCELLENT CHOICE FOR USERS AT ALL LEVELS.

INSTALLATION AND SETUP

TO BEGIN, YOU'LL NEED TO INSTALL ADOBE DREAMWEAVER CS5 ON YOUR COMPUTER. FOLLOW THESE STEPS:

1. **PURCHASE AND DOWNLOAD:** OBTAIN ADOBE DREAMWEAVER CS5 FROM THE ADOBE WEBSITE OR A REPUTABLE SOFTWARE RETAILER.
2. **RUN THE INSTALLER:** OPEN THE DOWNLOADED FILE AND FOLLOW THE ON-SCREEN INSTRUCTIONS.
3. **ACTIVATE THE SOFTWARE:** AFTER INSTALLATION, LAUNCH DREAMWEAVER AND ENTER YOUR PRODUCT KEY TO ACTIVATE THE SOFTWARE.

ONCE INSTALLED, FAMILIARIZE YOURSELF WITH THE USER INTERFACE, WHICH CONSISTS OF SEVERAL PANELS, MENUS, AND A WORKSPACE THAT YOU CAN CUSTOMIZE.

UNDERSTANDING THE INTERFACE

THE DREAMWEAVER CS5 INTERFACE IS DESIGNED TO STREAMLINE THE WEB DEVELOPMENT PROCESS. HERE ARE THE KEY COMPONENTS:

WORKSPACE

THE WORKSPACE IS WHERE YOU'LL DO MOST OF YOUR WORK. YOU CAN SWITCH BETWEEN DIFFERENT VIEWS:

- DESIGN VIEW: A VISUAL REPRESENTATION OF YOUR WEBPAGE.
- CODE VIEW: A TEXT-BASED REPRESENTATION WHERE YOU CAN WRITE AND EDIT HTML, CSS, AND JAVASCRIPT.
- SPLIT VIEW: A COMBINATION OF BOTH DESIGN AND CODE VIEWS, ALLOWING YOU TO SEE CHANGES IN REAL-TIME.

PANELS

ADOBE DREAMWEAVER CS5 INCLUDES VARIOUS PANELS THAT HELP MANAGE YOUR PROJECT:

- FILES PANEL: DISPLAYS YOUR SITE'S DIRECTORY STRUCTURE AND FILES.
- PROPERTIES PANEL: SHOWS PROPERTIES OF SELECTED ELEMENTS, ALLOWING FOR QUICK EDITS.
- CSS STYLES PANEL: LETS YOU MANAGE THE STYLES APPLIED TO YOUR WEBPAGE.

YOU CAN CUSTOMIZE THE WORKSPACE BY DRAGGING PANELS AROUND AND CREATING A SETUP THAT WORKS BEST FOR YOU.

CREATING YOUR FIRST WEBSITE

NOW THAT YOU ARE FAMILIAR WITH THE INTERFACE, LET'S CREATE YOUR FIRST WEBSITE IN ADOBE DREAMWEAVER CS5.

STEP 1: SET UP A NEW SITE

1. OPEN DREAMWEAVER CS5.
2. GO TO SITE IN THE MENU BAR AND SELECT NEW SITE.
3. ENTER A NAME FOR YOUR SITE.
4. SPECIFY A LOCAL SITE FOLDER WHERE YOU WILL STORE ALL YOUR PROJECT FILES BY CLICKING ON THE FOLDER ICON.
5. CLICK SAVE.

STEP 2: CREATE A NEW PAGE

1. IN THE FILES PANEL, RIGHT-CLICK ON YOUR SITE FOLDER AND SELECT NEW FILE.
2. NAME YOUR NEW FILE (E.G., INDEX.HTML).
3. DOUBLE-CLICK THE FILE TO OPEN IT IN THE WORKSPACE.

STEP 3: ADD CONTENT

- INSERT TEXT: CLICK ON THE DESIGN VIEW AND START TYPING. YOU CAN FORMAT YOUR TEXT USING THE PROPERTIES PANEL.
- INSERT IMAGES: GO TO INSERT  IMAGE AND CHOOSE AN IMAGE FILE FROM YOUR COMPUTER.

- CREATE LINKS: HIGHLIGHT THE TEXT YOU WANT TO TURN INTO A LINK, THEN CLICK THE LINK ICON IN THE PROPERTIES PANEL AND ENTER THE URL.

STYLING YOUR WEBSITE WITH CSS

CSS (CASCADING STYLE SHEETS) IS ESSENTIAL FOR STYLING YOUR WEBSITE. DREAMWEAVER CS5 MAKES IT EASY TO APPLY CSS TO YOUR HTML ELEMENTS.

STEP 1: CREATE A CSS FILE

1. RIGHT-CLICK ON YOUR SITE FOLDER IN THE FILES PANEL AND SELECT NEW FILE.
2. NAME YOUR CSS FILE (E.G., STYLES.CSS).
3. LINK THE CSS FILE TO YOUR HTML DOCUMENT BY ADDING THE FOLLOWING LINE IN THE `<head>` SECTION OF YOUR HTML FILE:

```
<head>
```

```
<link href="styles.css" type="text/css" rel="stylesheet">
```

STEP 2: ADDING STYLES

1. OPEN YOUR CSS FILE IN DREAMWEAVER.
2. START ADDING STYLES. FOR EXAMPLE, TO CHANGE THE BACKGROUND COLOR OF THE BODY, YOU CAN WRITE:


```
body {  
background-color: #f0f0f0;  
}
```

3. SAVE THE CSS FILE AND REFRESH YOUR HTML DOCUMENT TO SEE THE CHANGES.

USING TEMPLATES IN DREAMWEAVER CS5

TEMPLATES CAN SIGNIFICANTLY SPEED UP YOUR WEB DEVELOPMENT PROCESS. THEY ALLOW YOU TO CREATE A CONSISTENT LAYOUT ACROSS MULTIPLE PAGES.

STEP 1: CREATE A TEMPLATE

1. CREATE A NEW PAGE THAT WILL SERVE AS YOUR TEMPLATE.
2. DESIGN YOUR LAYOUT, INCLUDING HEADERS, FOOTERS, AND NAVIGATION.
3. GO TO FILE  SAVE AS TEMPLATE AND NAME YOUR TEMPLATE.

STEP 2: CREATE PAGES FROM THE TEMPLATE

1. GO TO FILE  NEW.
2. SELECT TEMPLATE AND CHOOSE YOUR SAVED TEMPLATE.

3. MAKE NECESSARY CHANGES FOR THE SPECIFIC PAGE AND SAVE IT.

PREVIEWING AND TESTING YOUR WEBSITE

BEFORE LAUNCHING YOUR WEBSITE, IT'S CRUCIAL TO PREVIEW AND TEST IT ACROSS DIFFERENT BROWSERS.

PREVIEWING IN DREAMWEAVER

- USE THE PREVIEW IN BROWSER OPTION TO SEE HOW YOUR SITE LOOKS IN VARIOUS WEB BROWSERS. YOU CAN SET UP DIFFERENT BROWSERS BY GOING TO EDIT [?](#) PREFERENCES [?](#) PREVIEW IN BROWSER.

TESTING FOR COMPATIBILITY

- CHECK YOUR WEBSITE FOR COMPATIBILITY ISSUES BY TESTING IT IN POPULAR BROWSERS LIKE CHROME, FIREFOX, AND SAFARI.
- USE TOOLS LIKE BROWSERSTACK OR CROSSBROWSERTESTING FOR A MORE COMPREHENSIVE TEST ACROSS VARIOUS DEVICES AND BROWSERS.

PUBLISHING YOUR WEBSITE

ONCE YOU ARE SATISFIED WITH YOUR WEBSITE, IT'S TIME TO PUBLISH IT.

STEP 1: SET UP FTP SETTINGS

1. GO TO SITE [?](#) MANAGE SITES.
2. SELECT YOUR SITE AND CLICK EDIT.
3. UNDER SERVERS, CLICK THE ADD NEW SERVER BUTTON.
4. ENTER YOUR FTP DETAILS (SERVER NAME, FTP ADDRESS, USERNAME, AND PASSWORD).

STEP 2: PUBLISH YOUR SITE

1. CLICK ON THE UPLOAD BUTTON IN THE FILES PANEL TO PUBLISH YOUR WEBSITE TO THE SERVER.
2. VERIFY THAT YOUR SITE IS LIVE BY VISITING YOUR DOMAIN IN A WEB BROWSER.

CONCLUSION

IN CONCLUSION, KNOWING HOW TO USE ADOBE DREAMWEAVER CS5 CAN SIGNIFICANTLY ENHANCE YOUR WEB DEVELOPMENT SKILLS. BY FOLLOWING THIS GUIDE, YOU CAN CREATE, STYLE, AND PUBLISH FUNCTIONAL WEBSITES EFFICIENTLY. AS YOU CONTINUE TO EXPLORE AND LEARN, YOU'LL FIND THAT DREAMWEAVER OFFERS EVEN MORE FEATURES TO HELP YOU BECOME A PROFICIENT WEB DEVELOPER. WHETHER YOU'RE DESIGNING FOR CLIENTS OR BUILDING YOUR PERSONAL PROJECTS, THE SKILLS YOU'VE GAINED WITH DREAMWEAVER CS5 WILL SERVE YOU WELL IN YOUR WEB DEVELOPMENT JOURNEY.

FREQUENTLY ASKED QUESTIONS

WHAT ARE THE SYSTEM REQUIREMENTS FOR INSTALLING ADOBE DREAMWEAVER CS5?

ADOBE DREAMWEAVER CS5 REQUIRES A WINDOWS XP, VISTA, OR 7 OPERATING SYSTEM OR MACOS 10.5 OR 10.6. IT ALSO NEEDS AT LEAST 1GB OF RAM AND 2GB OF AVAILABLE HARD-DISK SPACE.

HOW DO YOU CREATE A NEW WEBSITE IN DREAMWEAVER CS5?

TO CREATE A NEW WEBSITE IN DREAMWEAVER CS5, GO TO 'SITE' > 'NEW SITE', ENTER YOUR SITE NAME AND LOCAL SITE FOLDER, AND SET UP ANY NECESSARY SERVERS.

WHAT IS THE PURPOSE OF THE 'LIVE VIEW' IN DREAMWEAVER CS5?

LIVE VIEW ALLOWS YOU TO SEE YOUR WEBSITE AS IT WOULD APPEAR IN A WEB BROWSER, PROVIDING A REAL-TIME PREVIEW OF YOUR DESIGNS AND CHANGES.

HOW CAN YOU INSERT IMAGES INTO YOUR WEB PAGES USING DREAMWEAVER CS5?

TO INSERT IMAGES, GO TO 'INSERT' > 'IMAGE', BROWSE TO THE DESIRED IMAGE FILE, AND CLICK 'OK'. YOU CAN ALSO DRAG AND DROP IMAGES DIRECTLY INTO THE DESIGN VIEW.

HOW DO YOU USE CSS STYLES IN DREAMWEAVER CS5?

YOU CAN CREATE CSS STYLES BY GOING TO 'WINDOW' > 'CSS STYLES', THEN CLICKING ON 'NEW CSS RULE'. DEFINE YOUR STYLES AND APPLY THEM TO ELEMENTS IN YOUR DOCUMENT.

WHAT IS THE 'FILES' PANEL USED FOR IN DREAMWEAVER CS5?

THE 'FILES' PANEL IS USED TO MANAGE YOUR SITE FILES, ALLOWING YOU TO UPLOAD, DOWNLOAD, AND ORGANIZE FILES AND FOLDERS WITHIN YOUR WEBSITE.

HOW DO YOU PREVIEW YOUR WEB PAGE IN A BROWSER USING DREAMWEAVER CS5?

TO PREVIEW YOUR WEB PAGE, CLICK ON THE 'PREVIEW IN BROWSER' BUTTON IN THE TOOLBAR OR GO TO 'FILE' > 'PREVIEW IN BROWSER', THEN CHOOSE YOUR PREFERRED BROWSER.

WHAT IS THE DIFFERENCE BETWEEN DESIGN VIEW AND CODE VIEW IN DREAMWEAVER CS5?

DESIGN VIEW ALLOWS YOU TO VISUALLY CREATE AND EDIT YOUR WEBPAGES, WHILE CODE VIEW PROVIDES A TEXT-BASED INTERFACE FOR WRITING AND EDITING HTML, CSS, AND JAVASCRIPT CODE.

HOW CAN YOU ADD A HYPERLINK TO A TEXT IN DREAMWEAVER CS5?

TO ADD A HYPERLINK, SELECT THE TEXT YOU WANT TO LINK, CLICK THE 'INSERT' MENU, CHOOSE 'HYPERLINK', AND ENTER THE URL YOU WISH TO LINK TO.

IS IT POSSIBLE TO INTEGRATE PHP WITH DREAMWEAVER CS5?

YES, DREAMWEAVER CS5 SUPPORTS PHP DEVELOPMENT. YOU CAN CREATE PHP FILES, EDIT THEM DIRECTLY IN CODE VIEW, AND USE THE BUILT-IN TOOLS FOR WORKING WITH DATABASES.

Find other PDF article:

<https://soc.up.edu.ph/49-flash/files?ID=Phe02-3345&title=puerto-rico-bar-exam.pdf>

[How To Use Adobe Dreamweaver Cs5](#)

Create a Gmail account - Google Help

Create an account Tip: To use Gmail for your business, a Google Workspace account might be better for you than a personal Google Account. With Google Workspace, you get increased storage, professional email addresses, and additional features. Learn about Google Workspace pricing and plans. Try Google Workspace The username I want is taken

Chat Support Help

Official Chat Support Help Center where you can find tips and tutorials on using Chat Support and other answers to frequently asked questions.

Download and install Google Chrome

To use Chrome on Mac, you need macOS Big Sur 11 and up. If you don't know the admin password, drag Chrome to a place on your computer where you can make edits, like your desktop. Tip: To clean up after the install, in the Finder's sidebar, to ...

Make Google your default search engine - Google Search Help

To get results from Google each time you search, you can make Google your default search engine. Set Google as your default on your browser If your browser isn't listed below, check its help resource

Get started with Google Play

What you can do with Google Play Get games for Android devices and Chromebooks. Download Google Play Games Mobile App. Rent or buy movies and TV shows. Download the Google TV app. Read or listen to books, news, and publication subscriptions. Download Google Play Books. If you plan to buy apps or something within the apps you download, set up a payment method.

Printer keeps going "offline" Windows 11 - Microsoft Community

Feb 18, 2024 · My printer has worked fine until a month or two. Since then it keeps going offline. I have updated software drivers etc. I need to poke around with troubleshooters etc every time to get it to work.

M365 Copilot-created file placed at unreachable URL: - Microsoft ...

Jun 25, 2025 · When I asked M365 Copilot to generate a PPT for me, it said it had done so and placed it at a link beginning with "sandbox:/mnt/data". However, this is not a clickable link and I would like to know

Microsoft Support and Recovery Assistant for Office 365

Doesn't support MFA. Tried to diagnose Outlook 2016 (with ADAL enabled) that keeps asking for authentication, but the tool says I need to use an app password. Enabling ADAL means you don't need too and should be able to use MFA. Needs fixing.

Someone sent me a contact group as an attachment. I want to ...

Someone sent me a contact group as an attachment. I want to save it in my contacts. How do I do this?

Get started with Google Photos - Computer - Google Photos Help

The activity-based personalization setting allows Google Photos to show you even more personalized memories based on how you interact with features in Photos. To further personalize your memories

experience, Photos uses information like the types of memories you view or skip. This setting is turned on by default, and you can turn it off at any time. If the setting is off, you'll ...

Create a Gmail account - Google Help

Create an account Tip: To use Gmail for your business, a Google Workspace account might be better for you than a personal Google Account. With Google Workspace, you get increased ...

Chat Support Help

Official Chat Support Help Center where you can find tips and tutorials on using Chat Support and other answers to frequently asked questions.

Download and install Google Chrome

To use Chrome on Mac, you need macOS Big Sur 11 and up. If you don't know the admin password, drag Chrome to a place on your computer where you can make edits, like your ...

Make Google your default search engine - Google Search Help

To get results from Google each time you search, you can make Google your default search engine. Set Google as your default on your browser If your browser isn't listed below, check its ...

Get started with Google Play

What you can do with Google Play Get games for Android devices and Chromebooks. Download Google Play Games Mobile App. Rent or buy movies and TV shows. Download the Google TV ...

Printer keeps going "offline" Windows 11 - Microsoft Community

Feb 18, 2024 · My printer has worked fine until a month or two. Since then it keeps going offline. I have updated software drivers etc. I need to poke around with troubleshooters etc every time ...

M365 Copilot-created file placed at unreachable URL: - Microsoft ...

Jun 25, 2025 · When I asked M365 Copilot to generate a PPT for me, it said it had done so and placed it at a link beginning with "sandbox:/mnt/data". However, this is not a clickable link and I ...

Microsoft Support and Recovery Assistant for Office 365

Doesn't support MFA. Tried to diagnose Outlook 2016 (with ADAL enabled) that keeps asking for authentication, but the tool says I need to use an app password. Enabling ADAL means you ...

Someone sent me a contact group as an attachment. I want to ...

Someone sent me a contact group as an attachment. I want to save it in my contacts. How do I do this?

Get started with Google Photos - Computer - Google Photos Help

The activity-based personalization setting allows Google Photos to show you even more personalized memories based on how you interact with features in Photos. To further ...

Master Adobe Dreamweaver CS5 with our comprehensive guide. Discover how to enhance your web design skills and create stunning websites effortlessly. Learn more!

[Back to Home](#)