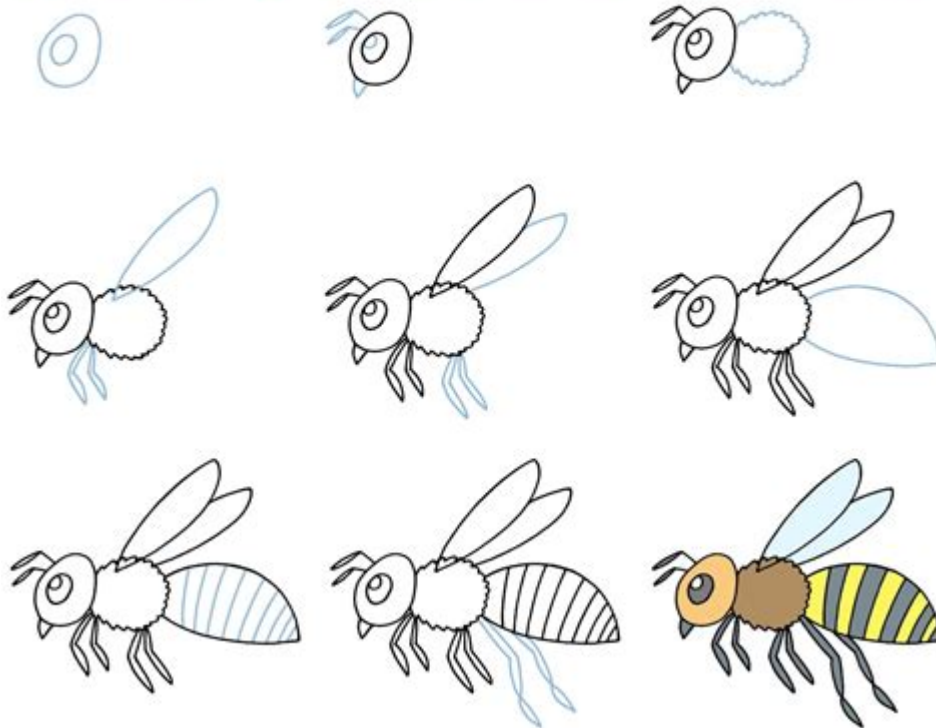


# How To Draw A Bee

HOWTODRAW EASY.NET

## How to Draw a Bee



How to draw a bee can be an enjoyable and rewarding experience for artists of all skill levels. Whether you are a beginner looking to learn the basics of drawing or an experienced artist wanting to refine your skills, this guide will provide step-by-step instructions to help you create a delightful representation of one of nature's most fascinating insects. Bees are not only important pollinators but also have a unique and recognizable appearance, making them a great subject for artistic exploration. In this article, we will cover the necessary materials, basic anatomy of a bee, step-by-step drawing instructions, and tips to enhance your bee illustration.

## Materials Needed

Before diving into the drawing process, it's essential to gather the right materials. Here's a list of items you may need:

- Pencil: A good quality graphite pencil for sketching.
- Eraser: To correct mistakes and refine your drawing.
- Paper: Choose a drawing paper or sketchbook with a smooth surface.
- Fine liner pens: For outlining your drawing and adding details.
- Colored pencils or markers: For adding color to your bee illustration.
- Ruler (optional): For creating straight lines or guidelines.

## Understanding Bee Anatomy

Before you can effectively draw a bee, it's helpful to understand its basic anatomy. This knowledge will assist you in capturing the essence of a bee in your illustration. Here are the main parts of a bee:

### 1. Head

- Compound Eyes: Large, multifaceted eyes that provide a wide field of vision.
- Antennae: Long, segmented appendages used for sensing the environment.
- Mouthparts: Adapted for sucking nectar; includes a proboscis and mandibles.

### 2. Thorax

- Wings: Bees have two pairs of wings that are often transparent.
- Legs: Six legs that are used for walking, grooming, and collecting pollen.

### 3. Abdomen

- Stinger: A defensive organ located at the rear of the abdomen in female bees.
- Pollen Basket: Found on the hind legs of some bees, used for transporting pollen.

By familiarizing yourself with these parts, you will be better equipped to draw a bee accurately.

# Step-by-Step Instructions to Draw a Bee

Now that you have the materials and an understanding of bee anatomy, let's proceed with the drawing. Follow these steps to create your bee illustration:

## Step 1: Basic Shapes

Begin by sketching the basic shapes that will form the body of the bee. Use light pencil strokes as these will serve as guidelines.

1. Draw the Head: Start with a small oval shape for the head.
2. Create the Thorax: Below the head, draw a larger oval for the thorax.
3. Form the Abdomen: Draw a larger oval or a slightly elongated shape beneath the thorax. This will be the bee's abdomen.
4. Add Guidelines for Legs and Wings: Lightly sketch lines extending from the thorax for the legs and two curved lines on each side of the thorax for the wings.

## Step 2: Define the Head and Face

Once you have the basic shapes, refine the head by adding features:

- Eyes: Draw two large oval shapes for the compound eyes. Make sure they occupy a significant portion of the head.
- Antennae: Add two long, curved lines extending from the top of the head for the antennae. They should be slightly thicker at the base and taper towards the tips.
- Mouthparts: Sketch a small proboscis extending downward from the center of the head. You can add mandibles on either side.

## Step 3: Shape the Body

Now it's time to refine the shapes of the thorax and abdomen:

- Thorax: Add texture by drawing fine lines to represent the segments of the thorax. You can also add small curves to indicate the legs.
- Abdomen: Draw horizontal stripes across the abdomen. Bees typically have alternating dark and light bands, so keep this in mind while sketching.

## Step 4: Draw the Wings

Next, focus on the wings:

1. Outline the Wings: Use the guidelines you created earlier to draw two wings on each side of the thorax.
2. Add Details: Include veins in the wings by drawing thin lines from the base to the tips, mimicking the structure of real bee wings.

## Step 5: Sketch the Legs

Now, let's define the legs:

- Front Legs: Draw the front legs extending from the thorax. They should be slightly bent and can include segments.
- Middle and Hind Legs: Add the middle and hind legs, ensuring they are positioned naturally. Don't forget to add the pollen baskets on the hind legs if desired.

## Step 6: Inking the Drawing

Once you are satisfied with your pencil sketch, it's time to go over it with fine liner pens:

1. Outline: Carefully trace over your pencil lines to create a clean outline.
2. Details: Add additional details, such as texture on the body and any intricate patterns on the wings.

## Step 7: Erase Guidelines

After the ink has dried, gently erase any remaining pencil lines and guidelines. This will clean up your drawing and prepare it for coloring.

## Step 8: Adding Color

Now, it's time to bring your bee to life with color:

1. Yellow and Black Stripes: Use colored pencils or markers to fill in the abdomen with alternating yellow and black stripes.
2. Wings: Lightly color the wings with a pale blue or grey, leaving the veins darker.
3. Details: Add shading to the body to create depth, and use a lighter shade for highlights.

## Tips for Enhancing Your Bee Drawing

To take your bee illustration to the next level, consider the following tips:

- Study Reference Images: Look at photographs or illustrations of bees to understand their anatomy and colors better.
- Experiment with Styles: Try different artistic styles, such as cartoonish or realistic, to see what resonates with you.
- Background Elements: Consider adding flowers or a hive in the background to provide context and enrich your composition.
- Practice: Like any skill, practice is crucial. Don't be discouraged if your first attempt isn't perfect; keep drawing bees to improve.

# Conclusion

Drawing a bee can be a delightful activity that combines creativity and a bit of biology. By following the steps outlined in this guide, you can create a charming representation of these incredible insects.

Remember to gather your materials, understand the anatomy, and take your time with each step. With practice and patience, you will develop your own unique style and improve your drawing skills.

Whether you intend to use your bee illustration for educational purposes, decoration, or simply for fun, enjoy the process and let your creativity flourish!

## Frequently Asked Questions

### What are the basic shapes to start drawing a bee?

Begin by sketching an oval for the body, a smaller circle for the head, and then add two wings using elongated shapes on either side.

### How can I add details to make my bee look more realistic?

Add stripes to the body using curved lines, draw small legs, and include texture on the wings. You can also add eyes and antennae for more detail.

### What colors should I use to color my bee?

Use a combination of yellow and black for the body stripes, light blue or gray for the wings, and white for the eyes to create a vibrant look.

### What techniques can I use to shade my bee drawing?

Use cross-hatching or stippling techniques to add depth and shadows, particularly under the wings and along the body to create a three-dimensional effect.

## Are there any tips for drawing a cartoon-style bee?

Exaggerate the shapes by making the body rounder and the wings larger. Use bold outlines and bright colors, and give the bee a cute expression to enhance the cartoon style.

Find other PDF article:

<https://soc.up.edu.ph/42-scope/pdf?trackid=GWE26-4648&title=murder-on-81st-street.pdf>

## How To Draw A Bee

### Draw on HTML5 Canvas using a mouse - Stack Overflow

Mar 3, 2010 · I want to draw on a HTML Canvas using a mouse (for example, draw a signature, draw a name, ...) How would I go about implementing this?

##### *dram* ##### - ##

##### BIOS ##### BIOS ##### CMOS ##### 10 #####  
#####

##### - ##

## Chemoffice ## ChemDraw ChemDraw ChemBioOffice #####  
##### [1] ChemDraw

...

##### **sci** ##### **Graphical Abstract** ##### - ##

##### IF ##### and ##### Short Abstract ## ##### figure #####  
##### ...

##### ...

##### OCR #####  
##### OCR ##### ...

##### - ##

##### - #####  
##### 2011 1 ##### ...

### python - Pygame Drawing a Rectangle - Stack Overflow

Nov 5, 2013 · pygame.draw.rect (screen, color, (x,y,width,height), thickness) draws a rectangle (x,y,width,height) is a Python tuple x,y are the coordinates of the upper left hand corner width, height are the width and height of the rectangle thickness is the thickness of the line.

### Newest 'draw.io' Questions - Stack Overflow

Nov 21, 2024 · I draw some custom shapes on draw.io desktop. But when I exported them to SVG(I also tried to export it to PNG or JPEG), and then open the SVG file on Google Chrome, it shows some "deleted shapes&...





"Learn how to draw a bee with our step-by-step guide! Perfect for beginners

[Back to Home](#)