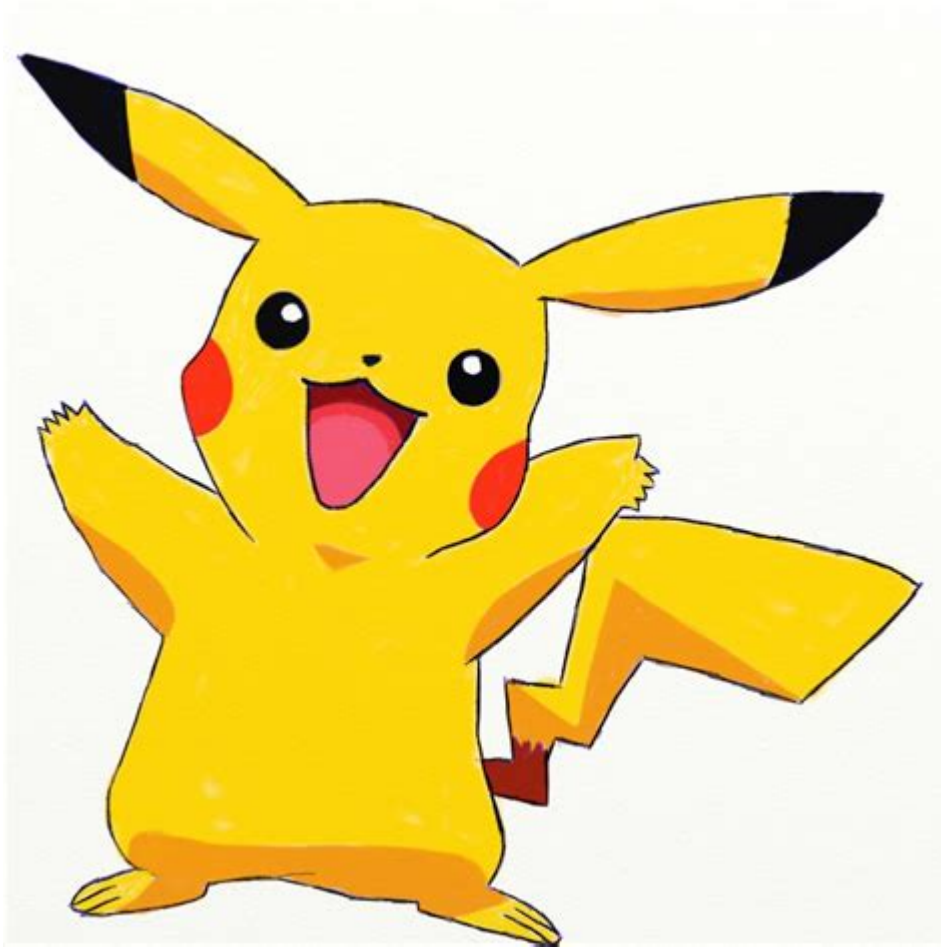


How To Draw Pokemon Pikachu



Introduction to Drawing Pikachu

If you're a fan of Pokémon, you probably want to learn how to draw Pikachu. **Pikachu** is one of the most iconic characters in the Pokémon franchise, known for its adorable appearance and electric abilities. Drawing Pikachu can be a fun and rewarding experience, whether you're a beginner or an experienced artist. This guide will take you through the steps to create your own Pikachu drawing, complete with tips and techniques to enhance your artistic skills.

Gathering Your Materials

Before you start drawing, it's essential to gather the right materials. Here's what you will need:

- Pencil (preferably a soft one like 2B or 4B)

- Eraser
- Paper (sketching paper or any plain paper)
- Black pen or fine liner (optional, for outlining)
- Colored pencils or markers (for coloring, optional)

Having these materials ready will make the drawing process smoother and more enjoyable.

Understanding Pikachu's Features

Before diving into the drawing process, it's essential to understand the features that make Pikachu unique. Pikachu is characterized by:

- Large, round ears with black tips
- A small, cute face with big, expressive eyes
- A chubby body with short arms and legs
- Rosy cheeks that store electric energy
- A zigzag tail that resembles a lightning bolt

Familiarizing yourself with these features will help you capture Pikachu's likeness in your drawing.

Step-by-Step Guide to Drawing Pikachu

Now that you have your materials and an understanding of Pikachu's features, let's break down the drawing process into manageable steps.

Step 1: Outline the Basic Shapes

Start by sketching the basic shapes that will form Pikachu's body. Using a light pencil stroke, draw the following shapes:

1. Head: Draw a circle for Pikachu's head.

2. Body: Below the head, draw an oval shape for the body.
3. Ears: On top of the head, sketch two elongated triangles for the ears.
4. Arms and Legs: Use small circles for the hands and feet, attaching them to the body.

This step focuses on the proportions and placement of Pikachu's features, so don't worry about details just yet.

Step 2: Refine the Shapes

Once you've outlined the basic shapes, it's time to refine them:

1. Head and Ears: Smooth out the outline of the head and add curves to the ears, making them more rounded at the base.
2. Face: Draw two large circles for the eyes, a small triangle for the nose, and a wide smile beneath the nose. Don't forget to add the rosy cheeks by drawing two small circles on either side of the face.
3. Body: Give Pikachu's body a more defined shape by rounding the edges and connecting it smoothly to the head.
4. Tail: Draw the zigzag shape of Pikachu's tail, making it curve slightly as it rises to create a dynamic look.

At this stage, you should have a more recognizable outline of Pikachu.

Step 3: Adding Details

With the refined outline in place, it's time to add details:

1. Eyes: Draw the pupils and add a shine effect by leaving a small white spot uncolored.
2. Ears: Add the black tips by drawing a smaller triangle at the top of each ear.
3. Cheeks: Shade or color the cheeks a rosy pink.
4. Fingers and Toes: Draw small lines to represent Pikachu's fingers and toes.

Take your time with this step to ensure that each detail is well-defined.

Step 4: Inking (Optional)

If you want a cleaner look, you can outline your drawing with a black pen or fine liner. Carefully trace over the pencil lines, and once the ink is dry, erase the pencil marks. This will give your drawing a polished finish.

Step 5: Coloring Your Drawing

Once you're satisfied with the outline, it's time to bring Pikachu to life with color:

1. **Body:** Color Pikachu's body a bright yellow, leaving the cheeks pink.
2. **Eyes:** Color the irises black and add a touch of blue or gray to the pupils for depth.
3. **Ears and Tail:** Color the tips of the ears black and the tail zigzag a darker shade of yellow or brown.

Feel free to use colored pencils, markers, or any medium you prefer. Experiment with shading to give your Pikachu a three-dimensional look.

Tips for Improving Your Drawing Skills

As you practice drawing Pikachu, consider the following tips to enhance your skills:

- **Practice Regularly:** The more you draw, the better you'll become. Set aside time each week to practice.
- **Study References:** Look at various images of Pikachu from different angles to understand its form better.
- **Experiment with Styles:** Try drawing Pikachu in different styles, such as cartoonish, realistic, or even in your unique style.
- **Seek Feedback:** Share your drawings with friends or online communities to get constructive feedback.
- **Be Patient:** Don't rush the process. Take your time to improve on areas that challenge you.

Conclusion

Learning how to draw Pikachu can be a delightful experience for both beginners and seasoned artists. By following the steps outlined in this guide—gathering your materials, understanding Pikachu's features, and practicing the drawing process—you can create your version of this beloved Pokémon. Remember to be patient with yourself and enjoy the creative process. With time and practice, you will see improvement in your drawing skills and may even be inspired to tackle other Pokémon characters. Happy drawing!

Frequently Asked Questions

What are the basic shapes to start drawing Pikachu?

Begin by sketching a large oval for Pikachu's body, a smaller circle for the head, and simple shapes for the ears and limbs. This will help you establish proportions.

How can I draw Pikachu's facial features?

To draw Pikachu's face, add two large round eyes, a small triangular nose, and a wide smile. Don't forget to include the signature red cheeks!

What colors should I use for coloring Pikachu?

Use a bright yellow for Pikachu's body, with black for the tips of the ears and brown stripes on the back. The cheeks should be colored red.

What techniques can help make my Pikachu look more dynamic?

To create a more dynamic pose, try drawing Pikachu in an action stance, like running or using an electric attack. Adding motion lines can also enhance the sense of movement.

How can I add texture to my Pikachu drawing?

You can add texture by using short, curved lines to suggest fur. Varying the pressure on your pencil can create a soft, fluffy appearance.

What tips can help me improve my Pikachu drawing skills?

Practice regularly and study different references. Try different poses and expressions to understand Pikachu's character better. Don't hesitate to use tutorials online for step-by-step guidance.

Find other PDF article:

<https://soc.up.edu.ph/16-news/Book?docid=uJA31-9027&title=cut-and-paste-math-worksheets.pdf>

[How To Draw Pokemon Pikachu](#)

Draw on HTML5 Canvas using a mouse - Stack Overflow

Mar 3, 2010 · I want to draw on a HTML Canvas using a mouse (for example, draw a signature, draw

a name, ...) How would I go about implementing this?

[dram](#) -

BIOS BIOS CMOS 10 ...

-

Chemoffice ChemDraw ChemBioOffice ...

[sci](#) **Graphical Abstract** -

IF and Short Abstract figure ...

...

OCR OCR ...

-

- ...

[python - Pygame Drawing a Rectangle - Stack Overflow](#)

Nov 5, 2013 · pygame.draw.rect (screen, color, (x,y,width,height), thickness) draws a rectangle (x,y,width,height) is a Python tuple x,y are the coordinates of the upper left hand corner width, ...

Newest 'draw.io' Questions - Stack Overflow

Nov 21, 2024 · I draw some custom shapes on draw.io desktop. But when I exported them to SVG(I also tried to export it to PNG or JPEG), and then open the SVG file on Google Chrome, ...

draw.io Desktop Windows - How to edit an inserted Mermaid ...

Sep 2, 2024 · When inserting a Mermaid diagram you have to set the type to "Image", if you use the default "Diagram" then the Mermaid diagram is transformed to a regular draw.io diagram, ...

[CAD](#) -

“taskbar” CAD 2016 CAD CAD ...

Draw on HTML5 Canvas using a mouse - Stack Overflow

Mar 3, 2010 · I want to draw on a HTML Canvas using a mouse (for example, draw a signature, draw a name, ...) How would I go about implementing this?

[dram](#) -

BIOS BIOS CMOS 10 ...

-

Chemoffice ChemDraw ChemBioOffice ...

[sci](#) **Graphical Abstract** -

IF and Short Abstract figure ...

... OCR ...

... - ...

python - Pygame Drawing a Rectangle - Stack Overflow
Nov 5, 2013 · pygame.draw.rect (screen, color, (x,y,width,height), thickness) draws a rectangle (x,y,width,height) is a Python tuple x,y are the coordinates of the upper left hand corner width, ...

Newest 'draw.io' Questions - Stack Overflow
Nov 21, 2024 · I draw some custom shapes on draw.io desktop. But when I exported them to SVG(I also tried to export it to PNG or JPEG), and then open the SVG file on Google Chrome, ...

draw.io Desktop Windows - How to edit an inserted Mermaid ...
Sep 2, 2024 · When inserting a Mermaid diagram you have to set the type to "Image", if you use the default "Diagram" then the Mermaid diagram is transformed to a regular draw.io diagram, ...

CAD - ...
“taskbar” CAD 2016 CAD CAD ...

Learn how to draw Pokémon Pikachu step-by-step with our easy guide. Unleash your creativity and impress friends! Discover how to start today!

[Back to Home](#)