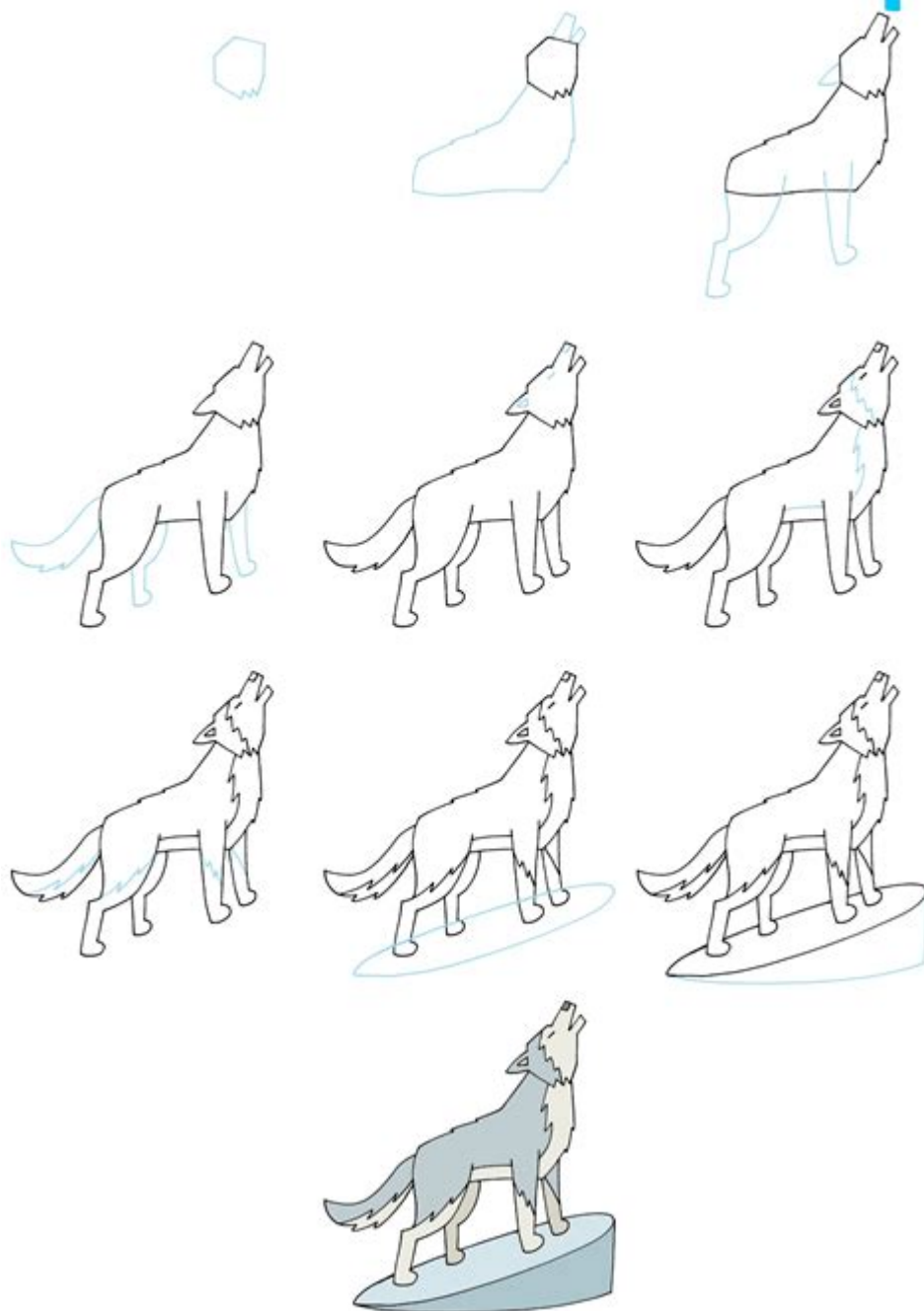


How To Draw A Wolf

HOWTODRAW EASY.NET

How to Draw a Wolf



How to draw a wolf is a popular inquiry among both novice and experienced artists alike. Wolves are majestic creatures that embody strength, loyalty, and wild beauty. Whether you want to create a realistic depiction or a stylized version, learning how to draw a wolf can be an enjoyable and rewarding experience. In this comprehensive guide, we will break down the process into manageable steps, providing you with the tools and tips you need to successfully capture the essence of this fascinating animal on paper.

Understanding Wolf Anatomy

Before putting pencil to paper, it's crucial to understand the basic anatomy of a wolf. This knowledge will help you create a more accurate illustration.

Key Features of a Wolf

1. Head: Wolves have a large, strong skull with a pronounced muzzle. Their ears are pointed and erect, and their eyes are keen and expressive.
2. Body: A wolf's body is relatively lean and muscular, designed for endurance and speed. The torso is long, and the legs are sturdy.
3. Tail: The tail is bushy and often held low, but can be raised when the wolf is alert or excited.
4. Fur: Wolves have thick fur that can vary in color from gray to black, brown, or even white, depending on the species and habitat.

By familiarizing yourself with these features, you will be better equipped to replicate the wolf's form in your drawing.

Gathering Your Materials

To get started with your wolf drawing, you'll need a few basic materials:

- Pencil (preferably a range from 2H to 6B for different shading effects)
- Eraser
- Paper (sketch paper or drawing paper)
- Reference images (photographs or illustrations of wolves)
- Optional: Colored pencils or markers for adding color

Having the right tools will enhance your drawing experience and allow for better results.

Step-by-Step Guide to Drawing a Wolf

Now that you have your materials, let's delve into the step-by-step process of drawing a wolf.

Step 1: Sketch the Basic Shapes

Begin your drawing with simple shapes to establish the proportions and layout of the wolf.

1. Head: Draw a circle for the head and an oval extending from it for the muzzle.
2. Body: Add a larger oval for the body behind the head.
3. Legs: Sketch two rectangles for the front legs and two more for the back legs.
4. Tail: Draw a long, curved shape extending from the back of the body to indicate the tail.

Once you have these shapes, you can adjust them to create the desired pose.

Step 2: Refine the Shapes

Now, begin refining your basic shapes into more recognizable wolf features.

1. Outline the Head: Using the circle as a guide, refine the shape to reflect the wolf's angular features. Add the ears on top of the head.
2. Define the Muzzle: Shape the muzzle by tapering the oval and adding the nose at the end.
3. Body Contours: Smooth out the body shapes, adding curves to indicate the wolf's musculature.
4. Legs and Paws: Refine the leg shapes, adding joints and defining the paws at the end of each leg.

Make sure to use light strokes so that you can easily erase and adjust as needed.

Step 3: Add Details

Once you're satisfied with the overall structure, it's time to add details that bring your wolf to life.

1. Facial Features: Draw the eyes, nose, and mouth. Pay attention to the expression; wolves can appear fierce, curious, or calm.
2. Fur Texture: Use short, quick strokes to mimic fur. Focus on areas like the neck, back, and tail to create a fluffy appearance.
3. Claws and Pads: Add details to the paws, including the claws and the pads underneath.

At this stage, take your time to add as much detail as you like. Reference images can be incredibly useful for this.

Step 4: Shading and Texture

Shading can add depth and dimension to your drawing. Here's how to effectively shade your wolf:

1. **Identify Light Sources:** Determine where the light is coming from in your drawing. This will help you decide where to add shadows.
2. **Use Different Pencil Grades:** Use softer pencils (like 4B or 6B) for darker areas and harder pencils (like 2H) for lighter areas.
3. **Blend:** You can use a blending stump or your finger to smooth out the pencil strokes, creating a more realistic fur texture.

Be patient during this process, as it can significantly enhance the quality of your artwork.

Step 5: Final Touches

After shading, step back and evaluate your work. Here are a few tips for finalizing your drawing:

1. **Clean Up:** Erase any unnecessary guidelines or stray marks to give your drawing a polished look.
2. **Enhance Highlights:** If you want to add a bit of shine to the eyes or wetness to the nose, consider using a white gel pen or colored pencil.
3. **Background:** If desired, add a simple background that reflects the wolf's natural habitat, like a forest or snowy landscape.

Tips for Improvement

Drawing takes practice, so don't be discouraged if your first attempt doesn't turn out as expected. Here are some tips to help you improve:

1. **Practice Regularly:** Set aside time each week to draw. The more you practice, the better you will become.
2. **Study Real Wolves:** Observe wolves in different poses and settings. This will help you understand their behavior and movement.
3. **Experiment with Styles:** Try different styles, from realistic to cartoonish, to find what you enjoy most.
4. **Seek Feedback:** Join art communities online or in-person to share your work and receive constructive feedback.

Conclusion

Learning **how to draw a wolf** can be a fulfilling journey that enhances your

artistic skills. By following the steps outlined in this guide, you can create a stunning representation of one of nature's most captivating creatures. Remember to be patient with yourself, practice regularly, and most importantly, enjoy the process. Happy drawing!

Frequently Asked Questions

What are the basic shapes to start drawing a wolf?

Begin with basic shapes like a circle for the head, an oval for the body, and rectangles for the legs to create a simple framework.

How can I capture the wolf's facial features accurately?

Focus on the eyes, nose, and ears. Wolves have sharp, angled features, so use reference images to study their proportions and expressions.

What techniques can I use to make the fur look realistic?

Use short, quick strokes to mimic fur texture, and vary the direction of your strokes to follow the natural flow of the fur.

Should I draw a wolf in a specific pose?

Choose a pose that highlights the wolf's characteristics, such as howling, running, or standing alert, to convey its personality and energy.

What tools are best for drawing a wolf?

Pencil, eraser, and fine-tip pens are great for sketching and outlining. Colored pencils or digital tools can help add depth and color to your drawing.

How can I add depth to my wolf drawing?

Use shading techniques to create depth. Consider the light source and add shadows to areas like the underside of the body and behind the ears.

Is it important to learn about wolf anatomy?

Yes, understanding wolf anatomy can help you draw more accurately. Study their skeletal structure and muscle positioning for better realism.

How can I improve my wolf drawing skills?

Practice regularly, study different wolf images, and consider taking online courses or tutorials to learn new techniques and styles.

<https://soc.up.edu.ph/36-tag/Book?docid=Tlr63-5360&title=label-plant-cell-worksheet.pdf>

Draw on HTML5 Canvas using a mouse - Stack Overflow

dram -

□□□□□□□□□□□□ - □□

Graphical Abstract - 

[illegible]

□□□□□ - □□

python - Pygame Drawing a Rectangle - Stack Overflow

Newest 'draw.io' Questions - Stack Overflow

draw.io Desktop Windows - How to edit an inserted Mermaid ...

Sep 2, 2024 · When inserting a Mermaid diagram you have to set the type to "Image", if you use the default "Diagram" then the Mermaid diagram is transformed to a regular draw.io diagram, ...

CAD

taskbar CAD 2016 CAD CAD ...

Draw on HTML5 Canvas using a mouse - Stack Overflow

Mar 3, 2010 · I want to draw on a HTML Canvas using a mouse (for example, draw a signature, draw

a name, ...) How would I go about ...

ramDRAM - RAM

BIOSBIOSCMOS10 ...

ChemOffice - Chem

ChemOffice ChemDraw ChemDraw ChemBioOffice ...

sciGraphical Abstract -

IFandShort Abstractfigure ...

OCR

OCR ...

Unlock your artistic potential with our step-by-step guide on how to draw a wolf. Perfect for beginners and experts alike! Learn more and start creating today!

[Back to Home](#)