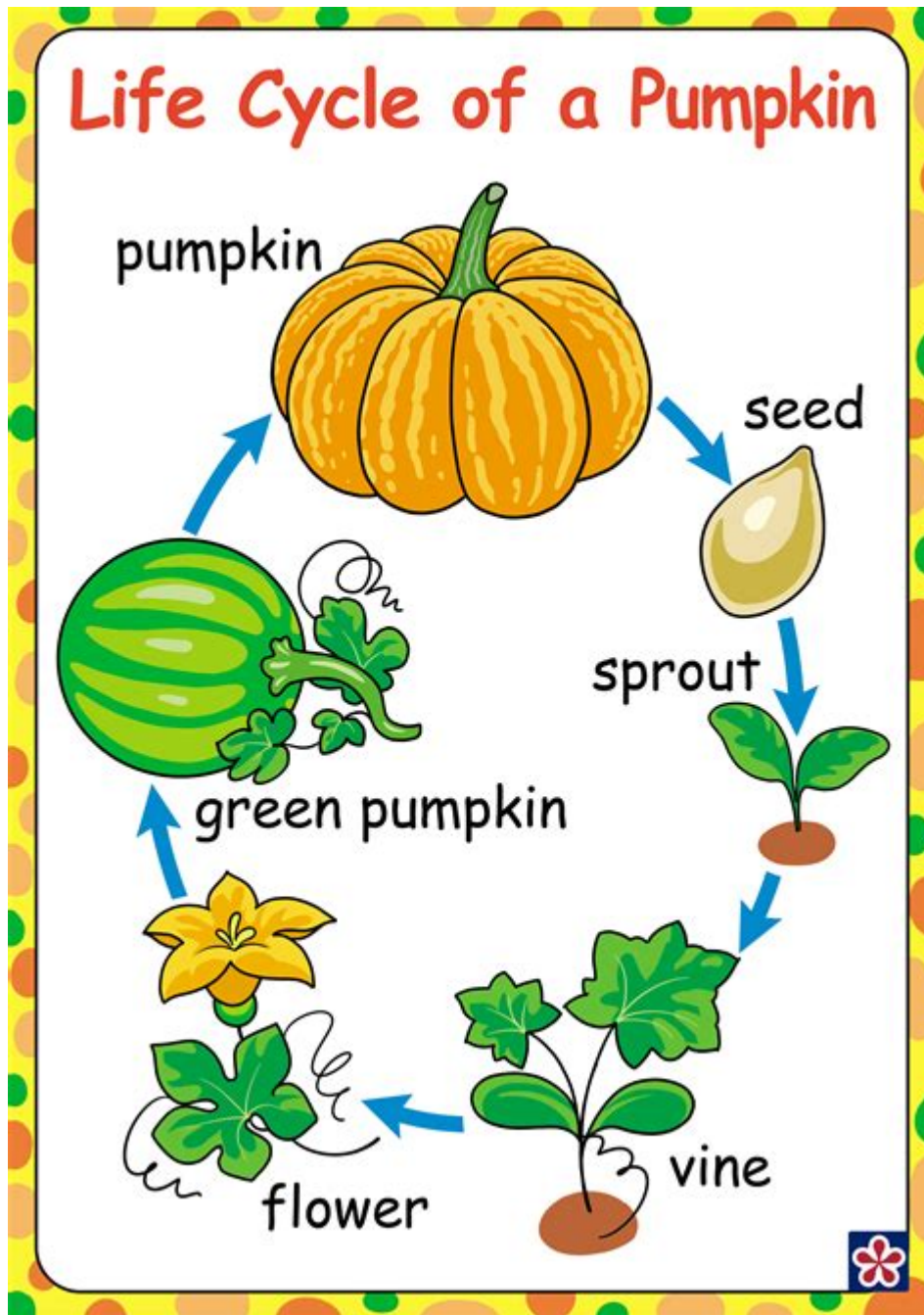


# How A Pumpkin Grows Worksheet



**How a pumpkin grows worksheet** offers a comprehensive way to understand the fascinating life cycle of pumpkins, from seed germination to full-grown fruit. This educational tool is especially valuable for teachers, parents, and students interested in botany, agriculture, or seasonal activities. In this article, we will explore the stages of pumpkin growth, the science behind it, and how to create an effective worksheet that can enhance learning and retention.

# Understanding the Life Cycle of a Pumpkin

The life cycle of a pumpkin can be divided into several key stages. Each stage represents important growth and development processes that are vital for producing healthy pumpkins. Here are the main stages:

1. **Seed Germination**
2. **Seedling Development**
3. **Vegetative Growth**
4. **Flowering**
5. **Fruit Development**
6. **Harvesting**

## 1. Seed Germination

The journey of a pumpkin begins with a seed. When planted in warm, moist soil, pumpkin seeds can germinate within 5 to 10 days. The process involves several steps:

- **Water Absorption:** The seed absorbs water, swelling and softening its outer coating.
- **Enzyme Activation:** Enzymes within the seed become active, breaking down stored nutrients for energy.
- **Root Emergence:** The radicle, or embryonic root, pushes down into the soil to anchor the plant.
- **Sprout Formation:** The shoot, or stem, emerges from the soil, seeking sunlight.

## 2. Seedling Development

Once the sprout emerges, it enters the seedling stage. This phase is crucial for establishing a strong foundation for the pumpkin plant. Key points include:

- **First Leaves:** The initial leaves (cotyledons) provide energy through photosynthesis.
- **Root System Expansion:** The root system continues to develop, allowing better nutrient and water absorption.
- **Environmental Factors:** Proper sunlight, temperature, and moisture are essential for healthy growth.

### 3. Vegetative Growth

In the vegetative growth phase, the pumpkin plant focuses on producing leaves, stems, and vines. This phase can last several weeks and involves:

- **Leaf Production:** More leaves are produced, which increases the plant's ability to photosynthesize.
- **Vine Development:** The vines grow long and spread out, which is essential for supporting the fruit.
- **Nutrient Needs:** Adequate water and fertilizers are crucial for robust growth.

### 4. Flowering

Once the plant reaches a certain maturity, it begins to flower. Pumpkin plants typically produce both male and female flowers. Understanding the difference is important:

- **Male Flowers:** These appear first and are responsible for pollen production.
- **Female Flowers:** These flowers have a small swelling at the base, which will develop into a pumpkin once pollinated.
- **Pollination:** Pollination is crucial for fruit development, and bees play a significant role in this process.

## 5. Fruit Development

Once the female flower is pollinated, the fruit begins to develop. This stage is both exciting and critical, as it involves:

- **Growth of the Pumpkin:** The fruit grows rapidly and will take several weeks to mature.
- **Color Change:** As the pumpkin matures, it transitions from green to its characteristic orange color.
- **Water Requirements:** Consistent watering is necessary to support the fruit's growth.

## 6. Harvesting

The final stage in the pumpkin's life cycle is harvesting. Knowing when and how to harvest is essential for ensuring quality:

- **Ripeness Indicators:** The pumpkin should have a firm shell and a deep color. The stem should also start to dry out.
- **Harvesting Technique:** Use a sharp knife or pruner to cut the pumpkin from the vine, leaving a few inches of stem attached.
- **Storage:** Store pumpkins in a cool, dry place to prolong their shelf life.

## Creating a Pumpkin Growth Worksheet

To effectively teach students about how a pumpkin grows, creating a worksheet can be a great educational resource. Here are some tips on how to make an engaging pumpkin growth worksheet:

### 1. Visual Aids

Incorporate images or diagrams of each growth stage. Visuals can enhance understanding and retention. Consider including:

- Diagrams of the seed germination process
- Photos of seedlings and mature plants
- Illustrations of flowers and fruits

## 2. Interactive Elements

Make the worksheet interactive by adding activities such as:

- **Labeling Diagrams:** Have students label parts of the pumpkin plant.
- **Matching Games:** Create a matching activity for stages of growth and their descriptions.
- **Observation Journals:** Encourage students to maintain a journal documenting their observations if they grow pumpkins.

## 3. Questions and Quizzes

Incorporate questions that test comprehension. Examples include:

- What are the differences between male and female pumpkin flowers?
- What conditions are necessary for seed germination?
- Describe the changes that occur during the fruit development stage.

## 4. Fun Facts

Add a section for fun pumpkin facts that can spark interest. For example:

- Did you know that pumpkins are technically fruits, not vegetables?
- The largest pumpkin ever recorded weighed over 2,600 pounds!
- Pumpkins were once used as a source of medicine by Native Americans.

# Conclusion

Using a **how a pumpkin grows worksheet** can significantly enhance the learning experience for students interested in botany and agriculture. By understanding the life cycle of pumpkins, children can appreciate the complexity and beauty of nature. Incorporating visual aids, interactive elements, and engaging questions will not only make learning fun but also deepen their understanding of this fascinating plant. Whether used in a classroom, at home, or during a seasonal activity, a well-crafted worksheet can be an invaluable educational tool.

## Frequently Asked Questions

### What are the main stages of pumpkin growth?

The main stages of pumpkin growth include seed germination, seedling development, flowering, fruit formation, and maturation.

### What conditions are ideal for growing pumpkins?

Pumpkins thrive in warm weather with full sunlight, well-drained soil, and plenty of water, ideally with a pH between 6.0 and 6.8.

### How long does it take for a pumpkin to grow from seed to harvest?

Typically, it takes about 75 to 120 days for a pumpkin to grow from seed to harvest, depending on the variety.

### What nutrients are essential for pumpkin growth?

Pumpkins require a balanced supply of nutrients, particularly nitrogen for leafy growth, phosphorus for root development, and potassium for fruit quality.

### How can you tell when a pumpkin is ripe?

A pumpkin is ripe when its skin is hard, its color is vibrant, and the stem starts to dry out and turn brown.

### What are common pests that affect pumpkin plants?

Common pests include aphids, squash bugs, and cucumber beetles, which can damage the plants and reduce yield.

# What should be included in a pumpkin growth worksheet?

A pumpkin growth worksheet should include sections for tracking planting dates, growth stages, observations of pests or diseases, and notes on watering and fertilization.

Find other PDF article:

<https://soc.up.edu.ph/54-tone/pdf?docid=CBb40-4975&title=solar-panel-roof-installation-guide.pdf>

## How A Pumpkin Grows Worksheet

~~~~~"~~~~"~~~~**pumpkin**~~~~~ - ~~~~

Oct 17, 2011 · pumpkin~~~~~19~~~~~  
~~~~~ ~~~~ ...

**pumpkin**~~~~~ - ~~~~~

9~ early pumpkin~~~~~ 10~giant pumpkin~~~~~ ~~~ 1~ I warrant you,he thought I had a pumpkin on my shoulders. ~~~~~ 2~ The pumpkin is ...

~~~~~pumpkin~\_~~~~~

~~~~~pumpkin~ pumpkin~~~~~1~~~~~

*Pumpkin Autoradio Forum - Android-Hilfe*

Jun 28, 2025 · Pumpkin Autoradio Forum Tipps und Tricks zu Pumpkin Autoradios bei Android-Hilfe.de.

**squash~pumpkin**~~~~~ - ~~~~~

squash~pumpkin~~~~~squash~pumpkin~~~~~ ~~~~~ 1~squash~~~~~  
~~~~~...~ (~~)~~~~~ ...

~~~~~squash~~~~~pumpkin~~ - ~~~

Feb 18, 2016 · 2~Pumpkin~~Squash~~~~~ pumpkin~~~~~

~~~~~great pumpkin - ~~~~~

religions, politics and the Great Pumpkin! ~~~~~6~~~~~The Great Pumpkin~~~~~  
~~~~~ ~ ...

Strawberry Patch~Pumpkin Patch~~~~~ - ~~~~~

Apr 19, 2015 · Strawberry Patch~Pumpkin Patch~~~~~strawberry patch ~~~pumpkin patch ~~~

pumpkin~~~~~\_~~~~~

pumpkin~~~~~pumpkin~~~~~['pʌmpkin]~pumpkin~~~~~We like pumpkin pies.~~~~~ ...

## Update Android 4.4.4 Custom Roms Pumpkin und fast alle anderen

Nov 20, 2015 · Pumpkin bietet die ROMS hier an: How to upgrade your pumpkin android head unit from 4.2 to 4.4 kitkat? (or flash your head unit) | AutoPumpkin Offical Support Center . Auf der ...

~~~~~"~~~~"~~~~pumpkin~~~~ - ~~~~

Oct 17, 2011 · pumpkin~~~~~19~~~~~  
~~~~~ ...

**pumpkin**~~~~ - ~~~~~

9 early pumpkin~~~~ 10giant pumpkin~~~~ 1 I warrant you,he thought I had a pumpkin on my shoulders. ~~~~~ 2 The ...

~~~~~**pumpkin**~~~~\_~~~~~

~~~~~pumpkin pumpkin~~~~~1~~~~~

Pumpkin Autoradio Forum - Android-Hilfe

Jun 28, 2025 · Pumpkin Autoradio Forum Tipps und Tricks zu Pumpkin Autoradios bei Android-Hilfe.de.

squashpumpkin~~~~ - ~~~~~

squashpumpkin~~~~squashpumpkin~~~~ 1squash~~~~~  
~~~~... (~~)~~~~ ...

~~~~**squash**~~~~**pumpkin**~~~~ - ~~~~

Feb 18, 2016 · 2Pumpkin~~Squash~~~~ pumpkin~~~~~

~~~~~great pumpkin - ~~~~~

religions, politics and the Great Pumpkin! ~~~~~6~~~~~The Great Pumpkin~~~~~  
~~~~~ ...

*Strawberry PatchPumpkin Patch*~~~~~ - ~~~~~

Apr 19, 2015 · Strawberry PatchPumpkin Patch~~~~~strawberry patch ~~~pumpkin patch ~~~

pumpkin~~~~~\_~~~~~

pumpkin~~~~~pumpkin~~~~~['pʌmpkɪn]pumpkin~~~~~We like pumpkin pies.~~~~~ ...

## Update Android 4.4.4 Custom Roms Pumpkin und fast alle anderen

Nov 20, 2015 · Pumpkin bietet die ROMS hier an: How to upgrade your pumpkin android head unit from 4.2 to 4.4 kitkat? (or flash your head unit) | AutoPumpkin Offical Support Center . Auf ...

Discover how a pumpkin grows with our engaging worksheet! Perfect for kids and educators

[Back to Home](#)