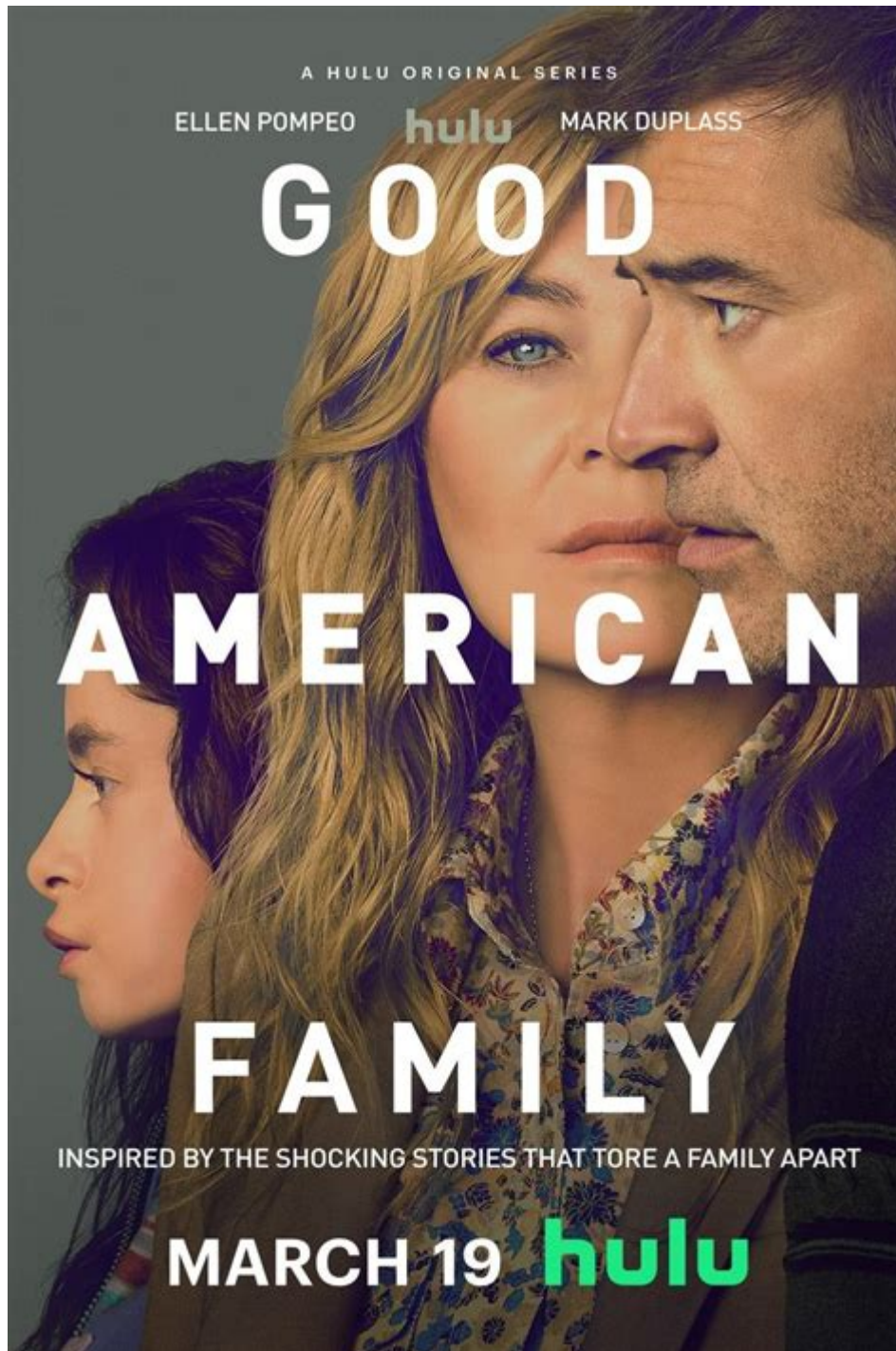


# How The Great Society Destroyed The American Family



## How the Great Society Destroyed the American Family

The Great Society, a set of domestic programs launched by President Lyndon B. Johnson in the 1960s, aimed to eliminate poverty and racial injustice in the United States. However, many critics argue that these initiatives inadvertently led to the disintegration of the American family unit. The consequences of these programs have been debated extensively, with various

sociologists, economists, and political analysts examining the impact of welfare reforms, urban development, and educational policies on family structures across the nation.

## **Historical Context of the Great Society**

To understand how the Great Society may have contributed to the decline of the American family, it's essential to trace the historical context in which these programs were developed.

### **The Vision of the Great Society**

President Johnson envisioned the Great Society as a means to create a more equitable America. His administration introduced several key initiatives, including:

1. Medicare and Medicaid: Healthcare programs aimed at providing medical assistance to the elderly and low-income individuals.
2. The War on Poverty: A series of initiatives designed to reduce poverty rates, such as job training programs and education grants.
3. Public Housing Programs: Initiatives to provide affordable housing for low-income families.
4. Civil Rights Legislation: Laws aimed at eliminating racial discrimination and promoting social justice.

While these programs sought to uplift the disadvantaged, they also had unintended consequences that some argue have eroded traditional family structures.

## **The Impact of Welfare Programs**

One of the most significant aspects of the Great Society was its expansion of welfare programs. Critics argue that these initiatives created a dependency culture that undermined family stability.

### **Welfare Dependency**

- Financial Incentives: Many welfare programs provided financial assistance to single mothers, creating a disincentive for marriage. Families would often receive more financial assistance if the father was absent from the household.
- Erosion of the Nuclear Family: The financial security provided by welfare made it easier for women to raise children without a partner, leading to an

increase in single-parent households.

- Long-term Consequences: Studies have shown that children raised in single-parent households may face higher risks of poverty, educational challenges, and emotional issues, which can perpetuate cycles of poverty and instability.

## **Changing Gender Roles**

The Great Society also coincided with the women's liberation movement, which sought to redefine traditional gender roles. While this movement brought many positive changes, it also had complex effects on family structures.

- Increased Workforce Participation: More women entered the workforce, which, while empowering, often meant less time for family engagement and child-rearing.
- Shift in Family Dynamics: The traditional roles of breadwinner and homemaker began to blur, leading to increased tensions and conflicts within families.
- Delayed Marriage and Childbearing: With more women pursuing careers, many chose to marry later or forgo marriage altogether, contributing to a decline in birth rates and changing family structures.

## **Urban Development and Its Effects**

The Great Society also focused on urban development, significantly impacting families, particularly in inner-city neighborhoods.

## **Housing Projects**

- Public Housing: The construction of large public housing complexes often led to concentrated poverty, which negatively affected families living in these areas.
- Community Disintegration: As families were displaced or moved into these housing projects, close-knit community ties weakened, leading to isolation and a lack of support systems.
- Crime and Safety Concerns: Many urban areas saw a rise in crime rates, which created unsafe environments for families and led to further disintegration.

## **Education and Opportunity**

The Great Society sought to enhance educational opportunities for low-income families through programs like Head Start and Title I funding for schools. However, the effectiveness of these programs has been questioned.

- **Quality of Education:** Many public schools in low-income areas struggled with funding and resources, leading to subpar educational outcomes for children.
- **School-to-Prison Pipeline:** Disparities in education and discipline led to a troubling trend where young men, particularly from marginalized communities, faced higher rates of incarceration, further destabilizing families.
- **Generational Poverty:** The lack of quality education perpetuated cycles of poverty, limiting opportunities for upward mobility and contributing to family instability.

## **Societal Attitudes and Cultural Shifts**

The Great Society also catalyzed broader cultural shifts in American society, which have influenced family dynamics.

## **Normalization of Divorce**

- **Cultural Acceptance:** With changing social norms, divorce became more accepted and prevalent. The stigma that once surrounded divorce diminished, leading to an increase in marital breakdowns.
- **Impact on Children:** Children from divorced families often face emotional and financial difficulties, which can lead to long-term challenges in their own relationships and family structures.

## **Shift in Values**

- **Individualism Over Collectivism:** The focus on individual rights and personal success began to overshadow communal values and family cohesion.
- **Decline of Religious Influence:** As society moved towards secularism, the traditional values often espoused by religious institutions, which historically emphasized family unity, began to wane.

## **Conclusion: A Complex Legacy**

The Great Society's legacy is complex, with both positive and negative outcomes. While the intention was to uplift the disadvantaged and create a more just society, the unintended consequences of welfare dependency, urban development, and shifting cultural attitudes have had lasting impacts on the American family.

As society continues to grapple with these issues, it is crucial to reflect on the lessons learned from the Great Society. Understanding the relationship between governmental programs and family dynamics can inform future policies

aimed at strengthening family units and fostering greater stability in American society. While the ambition to eradicate poverty and promote equality remains vital, a balanced approach that considers the nuances of family life is essential for the well-being of future generations.

## **Frequently Asked Questions**

### **What was the Great Society and its main objectives?**

The Great Society was a set of domestic programs launched by President Lyndon B. Johnson in the 1960s aimed at eliminating poverty and racial injustice. Its main objectives included education reform, healthcare expansion, and urban development.

### **How did the Great Society impact welfare programs in the U.S.?**

The Great Society expanded welfare programs significantly, leading to an increase in government assistance for low-income families. Critics argue that this reliance on welfare contributed to the breakdown of traditional family structures.

### **Did the Great Society lead to an increase in single-parent households?**

Many researchers argue that the expansion of welfare programs during the Great Society encouraged single-parent households by providing financial support that diminished the necessity for two-income families.

### **What role did the War on Poverty play in changing family dynamics?**

The War on Poverty, part of the Great Society, aimed to reduce poverty through various social programs. However, critics claim it inadvertently fostered dependency on government assistance, which some believe undermined family stability.

### **How did changes in marriage rates during the Great Society reflect its impact?**

During the Great Society era, marriage rates declined, particularly among low-income populations. Some sociologists link this trend to economic shifts and the availability of government support, which reduced the perceived need for marriage.

## **What criticisms have been made regarding the educational reforms of the Great Society?**

Critics of the Great Society's educational reforms argue that while they aimed to provide equal opportunities, they also created a system that failed to address underlying family issues, leading to educational disparities among children from different family backgrounds.

## **In what ways did the Great Society influence views on gender roles?**

The Great Society encouraged broader participation of women in the workforce through educational and employment programs. This shift challenged traditional gender roles but also contributed to tensions within family dynamics as roles evolved.

## **What are some long-term effects of the Great Society on American families today?**

Long-term effects include increased reliance on government assistance, higher rates of divorce and single parenthood, and ongoing debates about the role of government in family life, all of which continue to shape American family dynamics.

## **How do proponents of the Great Society defend its legacy concerning family structures?**

Proponents argue that the Great Society helped elevate many families out of poverty, provided essential services, and fostered social mobility, ultimately creating a more equitable society despite changes in traditional family structures.

Find other PDF article:

<https://soc.up.edu.ph/49-flash/Book?ID=SWV29-4771&title=questions-asked-on-an-interview.pdf>

## **[How The Great Society Destroyed The American Family](#)**

### **Create a Gmail account - Google Help**

Create an account Tip: To use Gmail for your business, a Google Workspace account might be better for you than a personal Google Account. With Google Workspace, you get increased storage, professional email addresses, and additional features. Learn about Google Workspace pricing and plans. Try Google Workspace The username I want is taken

**My Google Chrome Browser has been hijacked with the 'Search ...**

[Help Center](#) [Community](#) [Google Chrome](#) [Privacy Policy](#) [Terms of Service](#) [Community Policy](#)  
[Community Overview](#) [Enable Dark Mode](#) [This help content & information](#) [General Help](#) ...

## **Chat Support Help**

Official Chat Support Help Center where you can find tips and tutorials on using Chat Support and other answers to frequently asked questions.

## **Now is the time for a 'great reset' - World Economic Forum**

Jun 3, 2020 · Visit the Great Reset microsite [here](#). Hear Klaus Schwab on these podcast episodes: the Great Reset launch and his book. We can emerge from this crisis a better world, if we act quickly and jointly, writes Schwab. The changes we have already seen in response to COVID-19 prove that a reset of our economic and social foundations is possible. This is our ...

### *These are the 10 principles that make good leadership great*

Oct 10, 2023 · Today, in the private and public sectors, our leaders are becoming more diverse and less conventional. For these leaders, and those who aspire for the top spot one day, these 10 characteristics are where they should focus their development. At their core, they require soft skills and the ability to make smart, empathetic decisions under pressure.

### *Create your first site with Google Sites*

Create a site When you create a new site, it's added to Drive, just like other Drive files. Sites automatically saves every change you make, but your site isn't public until you publish it. Create and name your site The name you create here is the document name that appears in Google Drive. The document name is only visible to you.

## **Create a survey - Google Surveys Help**

When Google Surveys collects responses from the “general-Internet audience,” it uses published Internet-population data sets for the target-population distribution. For example, when targeting United States, the United States government’s Current Population Survey (CPS) Internet Supplement is the target population distribution. For details, see our methodology overview. ...

### *COVID-19: The 4 building blocks of the Great Reset*

Aug 11, 2020 · The Great Reset • New ideas are needed to catalyze the Great Reset after COVID-19.  
• Change can be as simple as adjusting our mindsets. • Greater connection between leaders and the people, and between people, has the potential to effect the most change.

### HRH the Prince of Wales and other leaders on the Forum's Great ...

Jun 3, 2020 · The Great Reset - the theme of Davos 2021 - is a commitment to jointly and urgently build the foundations of our economic and social system for a more fair, sustainable and resilient post-COVID future.

### The Great Reset - a blueprint for a better world after COVID

Jun 4, 2020 · The World Economic Forum's Klaus Schwab joins HRH The Prince of Wales to launch the Great Reset, to seek a greener, smarter, fairer world after COVID-19.

## **Create a Gmail account - Google Help**

Create an account Tip: To use Gmail for your business, a Google Workspace account might be better for you than a personal Google Account. With Google Workspace, you get increased storage, professional email addresses, and additional features. Learn about Google Workspace pricing and plans. Try Google Workspace The username I want is taken

*My Google Chrome Browser has been hijacked with the 'Search ...*

Help Center Community Google Chrome Privacy Policy Terms of Service Community Policy  
Community Overview Enable Dark Mode This help content & information General Help ...

### Chat Support Help

Official Chat Support Help Center where you can find tips and tutorials on using Chat Support and other answers to frequently asked questions.

### **Now is the time for a 'great reset' - World Economic Forum**

Jun 3, 2020 · Visit the Great Reset microsite here. Hear Klaus Schwab on these podcast episodes: the Great Reset launch and his book. We can emerge from this crisis a better world, if we act quickly and jointly, writes Schwab. The changes we have already seen in response to COVID-19 prove that a reset of our economic and social foundations is possible. This is our ...

### These are the 10 principles that make good leadership great

Oct 10, 2023 · Today, in the private and public sectors, our leaders are becoming more diverse and less conventional. For these leaders, and those who aspire for the top spot one day, these 10 characteristics are where they should focus their development. At their core, they require soft skills and the ability to make smart, empathetic decisions under pressure.

### **Create your first site with Google Sites**

Create a site When you create a new site, it's added to Drive, just like other Drive files. Sites automatically saves every change you make, but your site isn't public until you publish it. Create and name your site The name you create here is the document name that appears in Google Drive. The document name is only visible to you.

### **Create a survey - Google Surveys Help**

When Google Surveys collects responses from the "general-Internet audience," it uses published Internet-population data sets for the target-population distribution. For example, when targeting United States, the United States government's Current Population Survey (CPS) Internet Supplement is the target population distribution. For details, see our methodology overview. ...

### *COVID-19: The 4 building blocks of the Great Reset*

Aug 11, 2020 · The Great Reset • New ideas are needed to catalyze the Great Reset after COVID-19.  
• Change can be as simple as adjusting our mindsets. • Greater connection between leaders and the people, and between people, has the potential to effect the most change.

### **HRH the Prince of Wales and other leaders on the Forum's Great ...**

Jun 3, 2020 · The Great Reset - the theme of Davos 2021 - is a commitment to jointly and urgently build the foundations of our economic and social system for a more fair, sustainable and resilient post-COVID future.

### **The Great Reset - a blueprint for a better world after COVID**

Jun 4, 2020 · The World Economic Forum's Klaus Schwab joins HRH The Prince of Wales to launch the Great Reset, to seek a greener, smarter, fairer world after COVID-19.

Discover how the Great Society destroyed the American family. Explore its impact on family dynamics and society



[Back to Home](#)