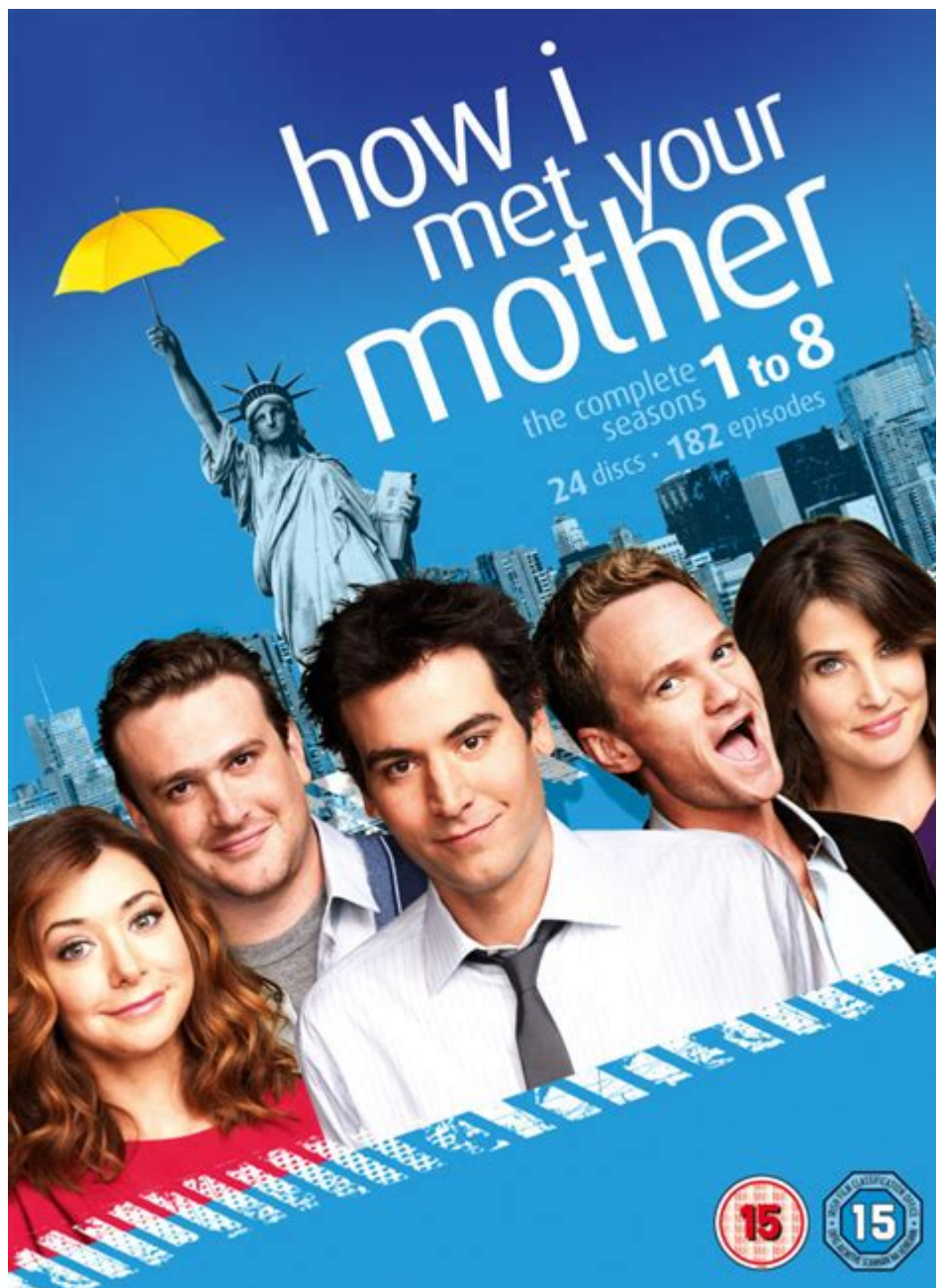


How I Met Your Mother Seasons 1 8



How I Met Your Mother Seasons 1-8 chronicles the lives of five friends living in New York City, weaving a rich tapestry of love, friendship, heartbreak, and growth. The series, created by Carter Bays and Craig Thomas, premiered in 2005 and quickly became a beloved staple of television comedy. With its unique storytelling style, clever wit, and heartfelt moments, the show captivated audiences for nine seasons. In this article, we will delve into the first eight seasons, exploring character development, major themes, and memorable episodes that defined the series.

Overview of the Series

How I Met Your Mother revolves around Ted Mosby, who narrates the story of how he met the mother of his children. Set in the early 2000s, the narrative is framed around Ted's memories, often jumping back and forth in time. The core group includes:

- Ted Mosby (Josh Radnor): A hopeless romantic and architect searching for true love.
- Robin Scherbatsky (Cobie Smulders): A Canadian journalist and Ted's love interest.
- Marshall Eriksen (Jason Segel): Ted's college roommate and best friend, a lawyer with a heart of gold.
- Lily Aldrin (Alyson Hannigan): Marshall's wife, an artist and kindergarten teacher who often acts as the voice of reason.
- Barney Stinson (Neil Patrick Harris): A notorious womanizer with a mysterious job and a penchant for elaborate schemes.

The interplay among these characters forms the core of the show, which balances humor with poignant moments that resonate with viewers.

Season 1: The Introduction

The first season introduces viewers to the main characters and sets the stage for Ted's quest for love. Key plot points include:

- Ted's infatuation with Robin, whom he meets at MacLaren's Pub.
- Marshall's engagement to Lily, which faces challenges due to her impulsive nature.
- Barney's outrageous antics and his "playbook" of seduction techniques.

Notable episodes include:

1. Pilot: The foundation of the series, introducing the characters and Ted's quest for love.
2. The Slap Bet: Barney's slap bet with Marshall, showcasing the show's humor and friendship dynamics.

Season 1 establishes the show's signature elements: the use of flashbacks, running gags, and heartfelt moments.

Season 2: Expanding Relationships

In the second season, the relationships among the characters deepen, and Ted's pursuit of Robin becomes more complicated. Key developments include:

- Ted and Robin's on-again, off-again romance.
- Marshall's struggles with his new job and the impact on his relationship with Lily.
- Barney's continual quest for one-night stands, introducing his infamous catchphrase, "Haaaave you met Ted?"

Memorable episodes include:

1. Something Borrowed: The group grapples with the consequences of Ted's feelings for Robin.
2. The Scorpion and the Toad: A pivotal moment for Ted and Robin, highlighting their emotional struggles.

Season 2 solidifies the show's charm, blending comedy with genuine emotional stakes.

Season 3: Love and Loss

Season 3 focuses heavily on the themes of love, loss, and personal growth. Major turning points occur, including:

- Ted's heartbreak after his relationship with Robin falters.
- Marshall and Lily's tumultuous journey leading to their eventual marriage.
- Barney's character development as he confronts his feelings for Robin.

Key episodes include:

1. Wait for It: Barney's backstory is explored, revealing the man behind the playboy facade.
2. The Pineapple Incident: A fan-favorite episode that showcases the show's clever storytelling.

This season introduces a more complex narrative, as characters face the consequences of their choices.

Season 4: New Beginnings

In Season 4, the characters face new challenges and transitions. Ted begins to take his career seriously, while Robin copes with her feelings for Barney. Significant plot points include:

- Ted's new job as a professor, allowing him to explore his passion for architecture.
- The evolution of Barney and Robin's relationship, which becomes increasingly complicated.
- Marshall and Lily navigating married life and its associated pressures.

Notable episodes include:

1. The Leap: Ted's journey to find his true self while teaching.
2. The Long Good-Bye: A poignant farewell to a beloved character, adding depth to the series.

Season 4 is marked by character growth and the exploration of adult relationships.

Season 5: The Mother is Still a Mystery

As the series progresses, Season 5 continues to build on the relationships established in previous seasons. The central theme revolves around the search for love and the complexities that accompany it. Key highlights include:

- Ted's date with a woman named Stella, who becomes a significant part of his life.
- Marshall's job struggles and aspirations to become a judge.
- Barney's quest to find the "perfect" woman while still dealing with his feelings for Robin.

Memorable episodes include:

1. The Wedding: An episode that showcases the group's dynamics during a wedding, setting the stage for future developments.
2. The Sexless Innkeeper: A hilarious exploration of Barney's attempts to find a roommate.

Season 5 is characterized by its humor, as well as deeper emotional undertones.

Season 6: The Countdown

Season 6 marks a turning point in the series as Ted continues his journey toward finding "the one." The season also introduces the concept of the "Mother" more explicitly. Major developments include:

- Ted's relationship with Zoey, a woman who challenges his views on love and architecture.
- The continued complexity of Barney and Robin's relationship, leading to significant betrayals.
- Marshall and Lily's attempts to start a family.

Key episodes include:

1. The Final Page: A pivotal moment for Ted as he contemplates his future.

2. The Fight: The gang confronts their differences, showcasing the strength of their friendships.

This season emphasizes the importance of relationships and the impact of choices on personal growth.

Season 7: The Search Intensifies

In Season 7, the quest for love becomes even more urgent. Ted continues to navigate his feelings and relationships, while the friends face their own challenges. Key aspects include:

- Ted's ongoing relationship with Zoey, which forces him to confront his feelings for Robin.
- Barney's transformation as he begins to explore deeper connections with women.
- Marshall and Lily dealing with the realities of marriage and career ambitions.

Notable episodes include:

1. The Naked Truth: An exploration of vulnerability and honesty in relationships.
2. The Seven: A unique episode that delves into the concept of "the one" and the impact of past relationships.

Season 7 focuses on the growth of the characters and their evolving dynamics.

Season 8: The Final Countdown

As the series approaches its conclusion, Season 8 emphasizes the importance of love, commitment, and friendship. The narrative becomes increasingly focused on Ted's journey to meet the Mother. Major developments include:

- Ted's attempts to move on from his past relationships and embrace new opportunities.
- Barney's shocking proposal to Robin, forcing the group to confront their feelings and futures.
- Marshall and Lily's struggles with parenthood and their evolving roles as partners.

Memorable episodes include:

1. The Time Travelers: A poignant exploration of love and missed opportunities.
2. Something New: The season finale that sets the stage for the final season.

Season 8 encapsulates the themes of love, friendship, and the complexity of human relationships.

Conclusion

How I Met Your Mother Seasons 1-8 is a rich exploration of love, friendship, and the journey of self-discovery. Through humor and heartfelt storytelling, the series resonates with audiences, showcasing the trials and triumphs of its characters. As Ted continues to search for the Mother, viewers are treated to a tapestry of experiences that reflect the complexities of modern relationships. With its unique narrative structure and unforgettable characters, the show has left an indelible mark on television history, making it a beloved classic that continues to be cherished by fans around the world.

Frequently Asked Questions

What is the central premise of 'How I Met Your Mother' seasons 1-8?

The series follows Ted Mosby as he recounts to his children the story of how he met their mother, with each episode revealing different aspects of his life and relationships with his friends.

Which character is known for their catchphrase 'Legendary'?

Barney Stinson, portrayed by Neil Patrick Harris, is known for his catchphrase 'Legendary' as he describes his various escapades and experiences.

How does the show utilize flashbacks and flash-forwards?

The narrative structure of the show frequently employs flashbacks and flash-forwards to provide context, humor, and foreshadowing, enriching the storytelling and character development.

What significant event happens in season 3 that impacts the group dynamics?

In season 3, Ted and Robin's relationship becomes a significant plot point, leading to various complications and ultimately affecting the dynamics of the entire friend group.

What is the significance of the 'Slap Bet' introduced in season 2?

The 'Slap Bet' is a recurring gag in the series that stems from a bet between Marshall and Barney, allowing for comedic moments throughout the series as Barney faces slaps as punishment.

Which character is known for their pessimistic view on love and relationships?

Lily Aldrin, while also a romantic, often exhibits a more realistic and sometimes pessimistic view on love and relationships, especially when it comes to her friends' choices.

How does the show address the theme of friendship across its eight seasons?

Throughout the eight seasons, 'How I Met Your Mother' emphasizes the importance of friendship, showcasing how the characters support each other through various life challenges, romantic entanglements, and personal growth.

Find other PDF article:

<https://soc.up.edu.ph/16-news/Book?trackid=LZk91-9321&title=data-science-in-context.pdf>

How I Met Your Mother Seasons 1 8

Inloggen bij Gmail - Computer - Gmail Help - Google Help

Inloggen bij Gmail Tip: Als je inlogt op een openbare computer, moet je uitloggen voordat je de computer verlaat. Bekijk meer informatie over hoe je inlogt op een apparaat dat niet van jou is.

Aan de slag met Google Agenda - Computer - Google Agenda Help

Met Google Agenda kun je het volgende doen: Vergaderingen en afspraken plannen. Taken toewijzen. Je planning delen. Meerdere agenda's maken. Meer in

Problemen met de Google Play Store-app oplossen - Google Play ...

Voordat je deze geavanceerde stappen uitvoert, raden we je aan om problemen met het downloaden van apps op te lossen via basisstappen voor probleemoplossing. Als je de Google ...

Een Gmail-account maken - Google Help

Een Gmail-account maken Maak een Google-account om je aan te melden voor Gmail. Je kunt met de gebruikersnaam en het wachtwoord van je Google-account inloggen bij Gmail en ...

Aan de slag met Google Foto's - Android - Google Foto's Help

Met de instelling voor personalisatie op basis van activiteit kan Google Foto's je nog meer gepersonaliseerde herinneringen laten zien op basis van hoe je de functies van Foto's ...

Inloggen met Google - Google-account Help

Inloggen met Google Gebruik je Google-account om snel en beveiligd nieuwe accounts te maken of in te loggen bij je favoriete apps en sites, zonder gebruikersnamen en wachtwoorden.

Aan de slag met Google Play - Computer - Google Play Help

Wat je kunt doen met Google Play Games downloaden voor Android-apparaten en Chromebooks. Download de mobiele Google Play Games-app. Films en tv-series huren of kopen. Ga naar ...

Aan de slag met Google Foto's - Computer - Google Foto's Help

Met de instelling voor personalisatie op basis van activiteit kan Google Foto's je nog meer gepersonaliseerde herinneringen laten zien op basis van hoe je de functies van Foto's ...

Aan de slag met Merchant Center - Google Help

Merchant Center werkt met een responsieve mobiele webervaring zodat u er na het aanmelden toegang toe heeft vanaf uw mobiele apparaat. De tijdzone voor Merchant Center wordt ...

Chrome instellen als je standaardbrowser - Google Help

Klik bovenaan naast 'Van Google Chrome uw standaardbrowser maken' op Bekijk de lijst onder de knop 'Standaard instellen' om te zien of de wijziging is toegepast op de juiste ...

Inloggen bij Gmail - Computer - Gmail Help - Google Help

Inloggen bij Gmail Tip: Als je inlogt op een openbare computer, moet je uitloggen voordat je de computer verlaat. Bekijk meer informatie over hoe je inlogt op een apparaat dat niet van jou is.

Aan de slag met Google Agenda - Computer - Google Agenda Help

Met Google Agenda kun je het volgende doen: Vergaderingen en afspraken plannen. Taken toewijzen. Je planning delen. Meerdere agenda's maken. Meer in

Problemen met de Google Play Store-app oplossen - Google Play ...

Voordat je deze geavanceerde stappen uitvoert, raden we je aan om problemen met het downloaden van apps op te lossen via basisstappen voor probleemoplossing. Als je de ...

Een Gmail-account maken - Google Help

Een Gmail-account maken Maak een Google-account om je aan te melden voor Gmail. Je kunt met de gebruikersnaam en het wachtwoord van je Google-account inloggen bij Gmail en ...

Aan de slag met Google Foto's - Android - Google Foto's Help

Met de instelling voor personalisatie op basis van activiteit kan Google Foto's je nog meer gepersonaliseerde herinneringen laten zien op basis van hoe je de functies van Foto's ...

Inloggen met Google - Google-account Help

Inloggen met Google Gebruik je Google-account om snel en beveiligd nieuwe accounts te maken of in te loggen bij je favoriete apps en sites, zonder gebruikersnamen en wachtwoorden.

Aan de slag met Google Play - Computer - Google Play Help

Wat je kunt doen met Google Play Games downloaden voor Android-apparaten en Chromebooks. Download de mobiele Google Play Games-app. Films en tv-series huren of kopen. Ga naar ...

Aan de slag met Google Foto's - Computer - Google Foto's Help

Met de instelling voor personalisatie op basis van activiteit kan Google Foto's je nog meer gepersonaliseerde herinneringen laten zien op basis van hoe je de functies van Foto's ...

Aan de slag met Merchant Center - Google Help

Merchant Center werkt met een responsieve mobiele webervaring zodat u er na het aanmelden toegang toe heeft vanaf uw mobiele apparaat. De tijdzone voor Merchant Center wordt ...

Chrome instellen als je standaardbrowser - Google Help

Klik bovenaan naast 'Van Google Chrome uw standaardbrowser maken' op Bekijk de lijst onder de knop 'Standaard instellen' om te zien of de wijziging is toegepast op de juiste ...

Explore the unforgettable moments of "How I Met Your Mother" seasons 1-8. Discover character arcs

[Back to Home](#)