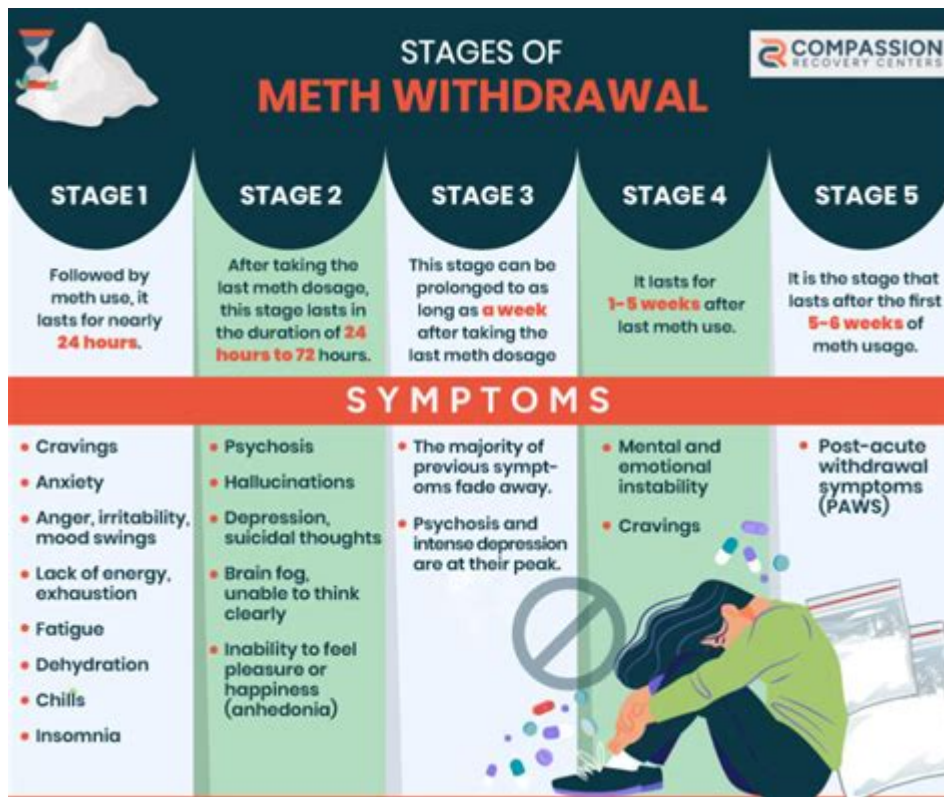


How Long Does Methamphetamine Stay In Your System



How long does methamphetamine stay in your system is a common question among those concerned about the effects of drug use, whether for personal health reasons, legal implications, or workplace policies. Methamphetamine, a powerful and highly addictive stimulant, can have a significant impact on the body and the mind. Understanding how long this substance remains detectable in the system is crucial for various reasons, including recovery, drug testing, and health awareness. In this article, we'll explore the duration methamphetamine stays in the body, the factors that influence this duration, and the methods used for detection.

Understanding Methamphetamine

Methamphetamine, often referred to as meth, crystal meth, or ice, is a synthetic drug that stimulates the central nervous system. It affects neurotransmitters in the brain, particularly dopamine, leading to increased energy, alertness, and feelings of euphoria. However, it also poses serious risks of addiction, health problems, and overdose.

Factors Influencing Detection Time

The length of time methamphetamine remains in the system can vary widely based on several factors, including:

1. Dosage and Frequency of Use

- Single Use: A one-time use of meth will typically clear from the system faster than chronic use.
- Chronic Use: Regular and heavy users may find that methamphetamine stays in their system longer due to accumulation and metabolic changes.

2. Metabolism

- Individual Metabolism: Each person's metabolic rate is different, influenced by age, sex, genetics, and overall health.
- Body Mass: Higher body fat percentages may retain substances longer than leaner individuals.

3. Method of Use

- Smoking or Injecting: These methods may lead to faster onset and shorter detection times compared to oral ingestion.
- Duration of Effects: The method of use can also affect how long the drug's effects are felt, thus influencing how long it remains detectable.

4. Hydration and Diet

- Water Intake: Staying hydrated can help flush out substances more quickly.
- Dietary Habits: A balanced diet may support faster metabolic processes.

5. Overall Health

- Liver and Kidney Function: These organs are crucial for detoxifying substances. Impaired function can prolong detection times.
- Existing Health Conditions: Chronic illnesses may affect metabolism and the body's ability to process drugs.

Detection Times for Methamphetamine

The detection time for methamphetamine varies by the type of test administered. Below is a breakdown of common testing methods and their respective windows of detection.

1. Urine Tests

- Detection Window: Methamphetamine can typically be detected in urine for 1 to 4 days after use.
- Chronic Users: In the case of regular users, it may be detectable for a week or longer.

2. Blood Tests

- Detection Window: Methamphetamine is generally detectable in blood for 1 to 3 days.
- Shorter Detection: Blood tests are less commonly used for drug screenings due to their shorter detection window.

3. Saliva Tests

- Detection Window: Saliva tests can detect methamphetamine for 1 to 3 days after use.
- Ease of Use: Saliva tests are often used in roadside testing due to their non-invasive nature.

4. Hair Follicle Tests

- Detection Window: Hair follicle tests can detect methamphetamine for up to 90 days or longer.
- Long-Term History: This type of testing provides a longer-term view of drug use but is less common in immediate testing scenarios.

Symptoms and Effects of Methamphetamine Use

Understanding how long methamphetamine stays in your system also involves recognizing the symptoms and effects of its use. These symptoms can vary widely based on individual tolerance, dosage, and frequency of use. Here are some common effects:

- Increased energy and alertness
- Euphoria or intense pleasure
- Decreased appetite
- Increased heart rate and blood pressure
- Insomnia or sleep disturbances

- Agitation and anxiety
- Paranoia and hallucinations (in severe cases)

Consequences of Methamphetamine Use

The ramifications of methamphetamine use extend beyond the immediate effects on the user. Long-term use can lead to severe health issues, including:

1. Addiction

Methamphetamine is highly addictive, leading to physical and psychological dependence.

2. Health Problems

- Cardiovascular Issues: Increased risk of heart attack and stroke.
- Dental Problems: Known as "meth mouth," users often suffer severe dental decay and tooth loss.
- Cognitive Decline: Long-term use can lead to memory loss and cognitive deficits.

3. Legal Issues

Possession and use of methamphetamine can lead to serious legal consequences, including arrest and incarceration.

Conclusion

In summary, **how long does methamphetamine stay in your system** is influenced by a variety of factors, including usage patterns, individual metabolism, and the type of drug test administered. While urine tests can detect methamphetamine for a few days, hair follicle tests may reveal use for months. Understanding these timelines is vital for individuals who may be facing drug tests or those who are on a path to recovery. If you or someone you know is struggling with methamphetamine use, seeking professional help can provide the necessary support and guidance for overcoming addiction and its consequences.

Frequently Asked Questions

How long can methamphetamine be detected in urine tests?

Methamphetamine can typically be detected in urine tests for 3 to 5 days after use, but this duration can vary based on factors like frequency of use and individual metabolism.

Does the method of methamphetamine use affect how long it stays in your system?

Yes, the method of use (smoking, injecting, or snorting) can influence how quickly it is metabolized and eliminated from the body, with injecting often leading to quicker onset and potentially shorter detection times.

Can hair follicle tests detect methamphetamine, and if so, for how long?

Yes, hair follicle tests can detect methamphetamine for up to 90 days after use, making them a longer-term detection method compared to urine tests.

What factors can influence how long methamphetamine stays in your system?

Factors include the user's metabolic rate, age, overall health, frequency and amount of use, hydration levels, and body mass, all of which can impact the drug's clearance time.

Are there any specific signs that methamphetamine is still in your system?

Signs that methamphetamine may still be in your system can include prolonged insomnia, increased heart rate, agitation, and other physical or psychological effects that can last for days after use.

Find other PDF article:

<https://soc.up.edu.ph/02-word/Book?trackid=RYx26-5325&title=334-practice-modeling-the-pool-table-problem.pdf>

[How Long Does Methamphetamine Stay In Your System](#)

long as long adj. ...

as long as -

Jul 13, 2015 · as long as [æz lɒŋ æz] so long as [səʊ lɒŋ æz] ...

AS LONG AS -

AS LONG AS... AS LONG AS [æz lɒŋ æz] As long as ...

-as long as you love me -

Mar 24, 2006 · as long as you love me as long as u love me. although loneliness has always been a ...

as long as -

as long as as long as [æz lɒŋ æz] [æz lɔːŋ ...

Inicia sesión: Cuentas de Google

¿Has olvidado tu correo electrónico? ¿No es tu ordenador? Usa una ventana de navegación privada para iniciar sesión. Más información sobre cómo usar el modo Invitado.

Gmail: el correo electrónico de Google

La sencillez y facilidad de Gmail en todo tipo de dispositivos. Organiza tu vida con la bandeja de entrada de Gmail, que clasifica tus mensajes por tipos. Además, habla con amigos en una ...

Iniciar sesión en Gmail - Ordenador - Ayuda de Gmail

En un ordenador, ve a Gmail. Escribe la dirección de correo de tu cuenta de Google o tu número de teléfono y la contraseña. Si la información ya está rellena y tienes que iniciar sesión en ...

Sign in - Google Accounts

Forgot email? Not your computer? Use a private browsing window to sign in. Learn more about using Guest mode.

Gmail - Google Accounts

Gmail es un servicio de correo electrónico intuitivo, eficaz y útil. Tiene 15 GB de almacenamiento, menos spam y acceso móvil.

Gmail: Correo electrónico gratuito, privado y seguro | Google ...

Descubre cómo Gmail mantiene tu cuenta y tus correos electrónicos encriptados, privados y bajo tu control con el servicio de correo electrónico seguro más importante del mundo.

Gmail: iniciar sesión y entrar a tu correo electrónico

Para ingresar al correo electrónico Gmail, puedes hacerlo desde una computadora o desde un celular en la versión web. Para ello, necesitas de tus datos de inicio de sesión: usuario ...

Utilizar Gmail para acceder a tu cuenta de Google

Para iniciar sesión en tu cuenta de Google (o en cualquier producto de Google): Ve a la página de inicio de sesión del producto que quieras (por ejemplo, para utilizar Cuentas de Google, ve...

Crear una cuenta de Gmail

Para registrarte en Gmail, tienes que crear una cuenta de Google. Puedes usar ese nombre de usuario y esa contraseña para iniciar sesión en Gmail y en otros productos de Google, como...

Gmail » Iniciar sesión o entrar al correo electrónico

Sep 15, 2023 · Introduce la contraseña y selecciona siguiente. Una vez completes estos pasos, tu correo estará abierto. En caso de que no seas dirigido a la bandeja de entrada, busca en ...

Discover how long methamphetamine stays in your system and what factors influence its duration. Learn more about testing methods and detox options today!

[Back to Home](#)