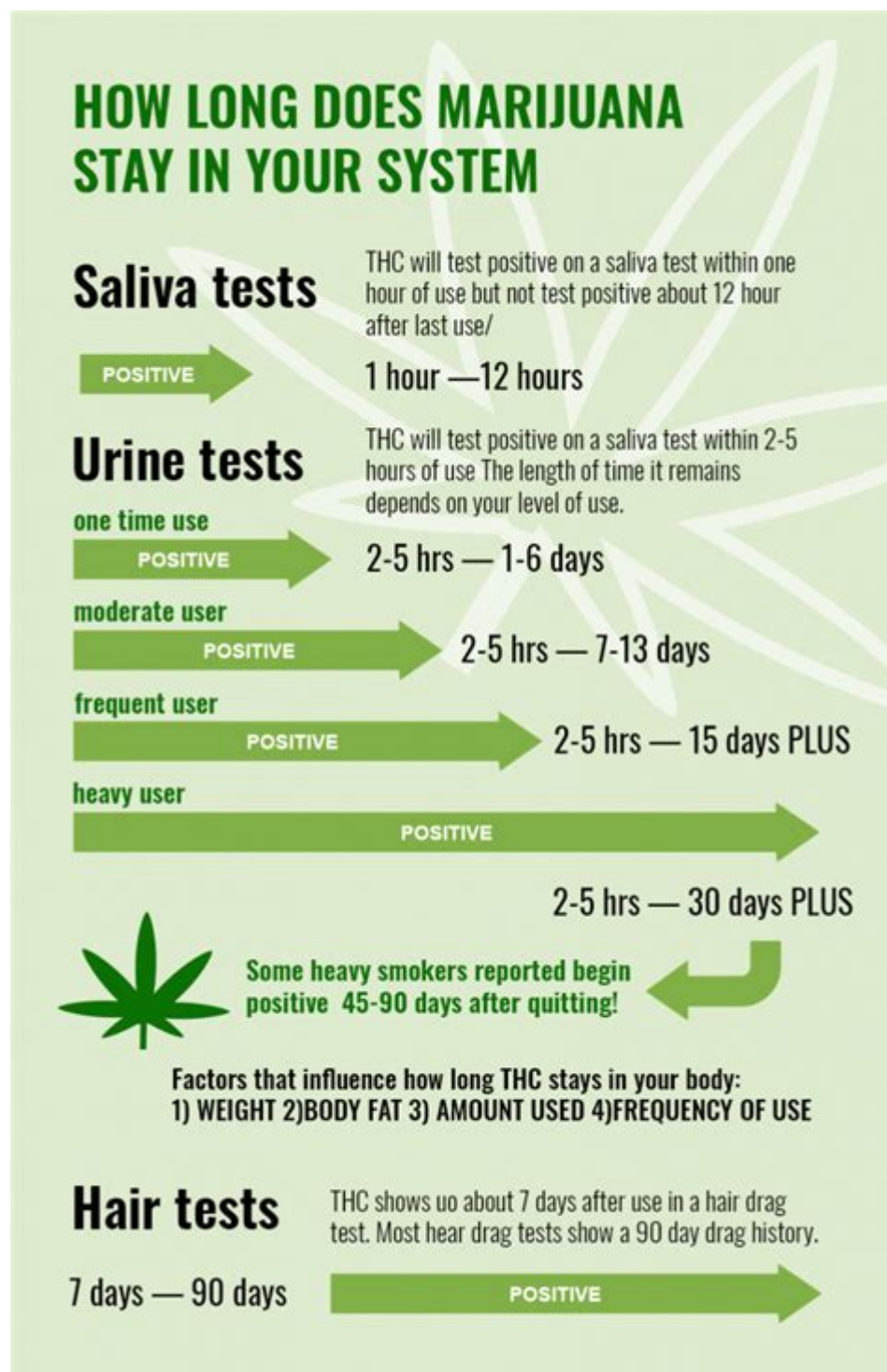


# How Long Does Marijuana Stay In Your Saliva



**How long does marijuana stay in your saliva?** This question has gained considerable attention in recent years, especially with the increasing legalization of marijuana for both medicinal and recreational use. Understanding the duration that THC (tetrahydrocannabinol), the primary psychoactive compound in marijuana, remains detectable in saliva is crucial for various reasons, including employment drug testing, legal implications, and personal health considerations. This article delves into the factors affecting THC detection in saliva, testing methods, and the

implications of saliva testing in the context of marijuana use.

## Understanding Saliva Testing for THC

Saliva testing is one of the methods used to detect the presence of THC and its metabolites in an individual's system. This method has gained popularity due to its non-invasive nature and the ability to provide immediate results.

### How Saliva Testing Works

Saliva tests for marijuana typically look for THC, which can be present in the saliva shortly after consumption. The testing process usually involves:

1. **Sample Collection:** A swab is taken from the inside of the mouth, often from the buccal mucosa.
2. **Analysis:** The collected sample is analyzed for THC using various methods, including immunoassays and chromatography.
3. **Results:** The results can often be obtained within minutes, making this method advantageous for on-site testing, such as roadside checks.

### Detection Window for THC in Saliva

The detection window for THC in saliva varies depending on several factors. Generally, THC can be detected in saliva for a shorter duration compared to other biological matrices like urine or blood.

### Factors Influencing Detection Time

Several factors affect how long THC stays in saliva:

1. **Frequency of Use:**
  - **Occasional Users:** For those who use marijuana infrequently, THC may be detectable in saliva for up to 24 hours after consumption.
  - **Regular Users:** Frequent users may have THC detectable in their saliva for up to 72 hours or longer, depending on their usage patterns.
2. **Dosage:**
  - Higher doses of THC can lead to a longer detection time. Consuming potent strains or larger quantities of marijuana will likely result in THC being detectable in saliva for a more extended period.
3. **Method of Consumption:**
  - Methods such as smoking or vaping can result in a quicker onset of THC in saliva, while edibles may take longer to affect saliva concentrations.

#### 4. Metabolism:

- Individual metabolic rates can significantly impact how long THC remains detectable. Factors such as age, weight, and overall health can influence the metabolism of THC.

#### 5. Hydration Levels:

- Staying hydrated can help reduce the concentration of THC in saliva, leading to a shorter detection window.

## Typical Detection Times

While the exact time THC remains detectable in saliva can vary, general guidelines suggest:

- Occasional Users: 1-3 days
- Regular Users: 3-7 days
- Heavy Users: Up to 30 days or more in extreme cases

## Testing Methods for Saliva

Different methods can be employed to test for THC in saliva, each with its pros and cons.

### Common Testing Methods

#### 1. Oral Fluid Collection Devices:

- These are commercially available kits that allow for easy collection and testing of saliva. They can be used in various settings, from clinics to roadside testing.

#### 2. Laboratory Analysis:

- Samples collected at the site can be sent to a laboratory for more comprehensive analysis, often using techniques like gas chromatography-mass spectrometry (GC-MS) for accurate results.

#### 3. Home Testing Kits:

- Available for personal use, these kits can provide preliminary results but may not be as reliable as laboratory testing.

## Implications of Saliva Testing

Saliva testing has various implications, especially regarding employment and legal matters.

### Workplace Testing Policies

Employers may implement saliva testing as part of their drug screening process. Understanding the

detection window and the factors influencing it is essential for employees who use marijuana.

- **Zero-Tolerance Policies:** Some workplaces adopt strict policies against drug use, which can lead to disciplinary actions, including termination, if THC is detected.
- **Legal Considerations:** In jurisdictions where marijuana is legal, the presence of THC in saliva may still pose legal challenges, especially in driving under the influence cases.

## **Impact on Personal Life**

For individuals using marijuana for medical purposes, the implications of saliva testing can be significant. It is essential to consider the timing of use concerning any upcoming drug tests and understand the potential consequences.

## **Conclusion**

In summary, the question of how long does marijuana stay in your saliva is influenced by a multitude of factors, including frequency of use, dosage, method of consumption, and individual metabolism. While occasional users may find THC detectable for a day or two, regular and heavy users may face detection windows extending several days to weeks. As marijuana becomes increasingly legalized and accepted across various regions, understanding the nuances of saliva testing will remain important for individuals and employers alike. Whether for employment, legal situations, or personal health, being informed about the detection times and factors that influence THC presence in saliva can help individuals navigate the complexities of marijuana use responsibly.

## **Frequently Asked Questions**

### **How long can marijuana be detected in saliva after use?**

Marijuana can typically be detected in saliva for 1 to 3 days after use, although this can vary based on factors like frequency of use and individual metabolism.

### **What factors influence the duration marijuana stays in saliva?**

Factors include the frequency of use, dosage, individual metabolism, body fat percentage, and the type of marijuana consumed.

### **Are there specific tests that can determine the presence of marijuana in saliva?**

Yes, there are specialized saliva tests designed to detect THC, the active compound in marijuana, which can provide results within minutes.

# Can eating or drinking affect saliva drug test results after marijuana consumption?

Yes, consuming food or drinks can potentially dilute saliva and may reduce the concentration of THC, but it does not eliminate the presence of the drug.

## Is it possible for marijuana to stay in saliva longer for chronic users?

Yes, chronic users may have detectable levels of THC in their saliva for a longer period, sometimes up to a week or more, depending on their usage patterns.

## How do saliva drug tests compare to urine tests for detecting marijuana?

Saliva tests typically detect recent use (within a few days), while urine tests can detect marijuana use over a longer period, often up to 30 days for chronic users.

Find other PDF article:

<https://soc.up.edu.ph/45-file/files?ID=QFc49-2375&title=paid-research-studies-atlanta.pdf>

## How Long Does Marijuana Stay In Your Saliva

**long** -

long long long long long [lɒŋ] [lɑːŋ] adj. ...

**as long as** **so long as** -

Jul 13, 2015 · as long as [æz lɒŋ æz] so long as [səʊ lɒŋ æz] as long as [sɒ lɒŋ æz] as long as so long as " " ...

**AS LONG AS** -

AS LONG AS... AS LONG AS [æz lɒŋ æz] As long as needed as long again as As long as Hello As ...

**as long as you love me** -

Mar 24, 2006 · as long as you love me as long as u love me. although loneliness has always been a friend of mine. i'm leaving my life in ur hands. ...

**as long as** -

as long as as long as [æz lɒŋ æz] [æz lɔːŋ æz] 1 As long as I

**long** -

Aug 3, 2012 · long longer , longest 1 measuring or covering a great length or distance, or a greater length or distance than usual She had long dark hair. ...

Mar 15, 2015 · A4 “” “” ...

**Taylor swift LONG LIVE** -

Taylor swift LONG LIVE Long Live · · · I said remember this moment In ...

**How long** -

Feb 9, 2011 · How long how long “ for+ “ “since+ “since+ “” ...

**long** -

long [lɒŋ] [lɔːŋ] adj. adv. v. n. She was slender and ...

*long* -

long long [lɒŋ] [lɔːŋ] adj. ...

as long as so long as -

Jul 13, 2015 · as long as [æz lɒŋ æz] so long as [səʊ lɒŋ æz] as long as [səʊ lɒŋ æz] ...

**AS LONG AS** -

AS LONG AS... AS LONG AS [æz lɒŋ æz] As long as needed as long again as As long as Hello ...

as long as you love me -

Mar 24, 2006 · as long as you love me as long as u love me. although loneliness has always been a friend of mine. i'm leaving my life in ur ...

as long as -

as long as as long as [æz lɒŋ æz] [æz lɔːŋ æz] 1 As long as I

**long** -

Aug 3, 2012 · long longer , longest 1 measuring or covering a great length or distance, or a greater length or distance than usual She had long ...

Mar 15, 2015 · A4 “” “” ...

Taylor swift LONG LIVE -

Taylor swift LONG LIVE Long Live · · · I said remember this moment ...

*How long* -

Feb 9, 2011 · How long how long “ for+ “since+ “since+ ...

**long** -

long [lɒŋ] [lɔːŋ] adj. adv. v. n. She was ...

Discover how long marijuana stays in your saliva and what factors influence detection times. Learn more to stay informed and make better choices!

[Back to Home](#)