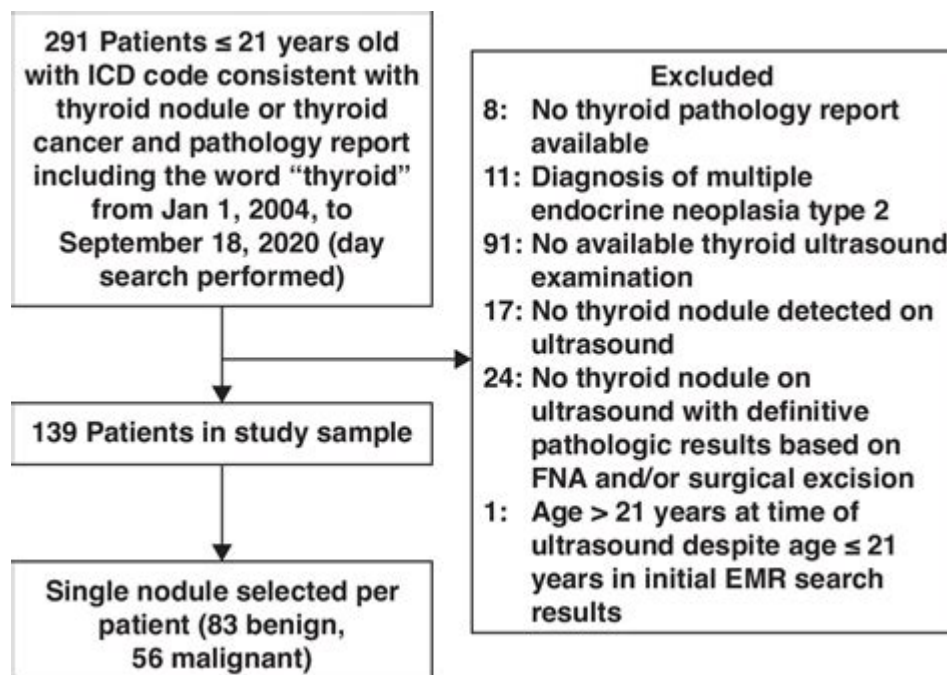


History Of Thyroid Nodules Icd 10



HISTORY OF THYROID NODULES ICD 10 CODING HAS EVOLVED SIGNIFICANTLY OVER THE YEARS, REFLECTING ADVANCEMENTS IN MEDICAL UNDERSTANDING, DIAGNOSTIC TECHNIQUES, AND TREATMENT METHODS. THYROID NODULES, WHICH ARE ABNORMAL GROWTHS IN THE THYROID GLAND, HAVE BECOME A COMMON CLINICAL FINDING, PROMPTING THE NEED FOR PRECISE CODING IN ORDER TO FACILITATE ACCURATE DIAGNOSIS, TREATMENT, AND BILLING. IN THIS ARTICLE, WE WILL DELVE INTO THE HISTORY OF THYROID NODULES AND THEIR CLASSIFICATION UNDER THE INTERNATIONAL CLASSIFICATION OF DISEASES, 10TH REVISION (ICD-10), AS WELL AS EXPLORE THE IMPLICATIONS OF THESE CLASSIFICATIONS IN CLINICAL PRACTICE.

THE EVOLUTION OF THYROID NODULE CLASSIFICATION

HISTORICALLY, THE UNDERSTANDING OF THYROID NODULES HAS PROGRESSED FROM GENERAL DESCRIPTIONS TO SPECIFIC CLASSIFICATIONS. THE AWARENESS OF THYROID CONDITIONS DATES BACK THOUSANDS OF YEARS, BUT SYSTEMATIC CLASSIFICATION BEGAN TO TAKE SHAPE IN THE 20TH CENTURY.

EARLY HISTORICAL CONTEXT

1. **ANCIENT UNDERSTANDING:** ANCIENT CIVILIZATIONS RECOGNIZED GOITERS AND OTHER THYROID-RELATED CONDITIONS, BUT DID NOT HAVE A DETAILED UNDERSTANDING OF THEIR NATURE. CONDITIONS WERE OFTEN ATTRIBUTED TO SUPERNATURAL CAUSES OR IMBALANCES IN THE BODY'S HUMORS.

2. **20TH CENTURY DEVELOPMENTS:** WITH THE ADVENT OF MODERN MEDICINE, RESEARCHERS BEGAN TO CATEGORIZE THYROID CONDITIONS MORE SYSTEMATICALLY. THE INTRODUCTION OF IMAGING TECHNOLOGIES LIKE ULTRASOUND FURTHER AIDED IN THE IDENTIFICATION OF NODULES.

3. **INTRODUCTION OF ICD CODES:** THE ICD SYSTEM WAS DEVELOPED BY THE WORLD HEALTH ORGANIZATION (WHO) TO STANDARDIZE THE CLASSIFICATION OF DISEASES. THE FIRST EDITION WAS PUBLISHED IN 1900, BUT IT WASN'T UNTIL THE 1970S THAT THYROID NODULES WERE SPECIFICALLY ADDRESSED IN THE CODING SYSTEM.

ICD-10 OVERVIEW

ICD-10 is a coding system used globally to classify diseases and health conditions. It provides healthcare professionals with a standardized method for documenting diagnoses, which is essential for patient care, research, and billing.

ICD-10 CODES FOR THYROID NODULES

In ICD-10, thyroid nodules fall under the category E04, which includes various disorders of the thyroid gland. The specific codes related to thyroid nodules are as follows:

- E04.0: Nontoxic diffuse goiter
- E04.1: Nontoxic multinodular goiter
- E04.2: Nontoxic solitary nodular goiter
- E04.9: Nontoxic goiter, unspecified
- E05.0: Thyrotoxicosis due to excessive thyroid hormone from thyroid nodules

These codes allow healthcare providers to specify the nature of the thyroid condition, which is crucial for accurate diagnosis and treatment planning.

CLINICAL SIGNIFICANCE OF THYROID NODULE CODING

The accurate coding of thyroid nodules in ICD-10 has significant implications for clinical practice, research, and patient management.

IMPORTANCE IN DIAGNOSIS AND TREATMENT

- 1. Facilitates Communication:** A standardized coding system enables better communication among healthcare providers. When a patient presents with a thyroid nodule, the use of ICD-10 codes ensures that all providers understand the specific nature of the condition.
- 2. Guides Treatment Protocols:** Different types of thyroid nodules may require different treatment approaches. Accurate coding helps clinicians determine the appropriate management strategy, including the need for further diagnostic testing or surgical intervention.
- 3. Research and Data Collection:** ICD-10 codes allow for the aggregation of data across different healthcare settings. This is essential for research purposes, enabling studies on the prevalence, outcomes, and cost-effectiveness of various treatments for thyroid nodules.

BILLING AND REIMBURSEMENT

- 1. Insurance Claims:** Accurate coding is crucial for the reimbursement process. Insurance companies require specific ICD-10 codes to process claims, and errors in coding can lead to claim denials or delays in payment.
- 2. Quality of Care Metrics:** Many healthcare organizations use ICD-10 codes to track quality of care metrics. This can impact hospital ratings and reimbursement rates, making accurate coding vital for financial health.

FUTURE DIRECTIONS IN THYROID NODULE CLASSIFICATION

AS MEDICAL KNOWLEDGE CONTINUES TO EVOLVE, SO TOO WILL THE CLASSIFICATION AND CODING OF THYROID NODULES. EMERGING RESEARCH AND TECHNOLOGIES HOLD PROMISE FOR MORE PRECISE DIAGNOSES AND TREATMENT OPTIONS.

ADVANCEMENTS IN DIAGNOSTIC TECHNIQUES

1. **GENETIC TESTING:** THE INTRODUCTION OF GENETIC TESTING FOR THYROID NODULES CAN HELP DIFFERENTIATE BETWEEN BENIGN AND MALIGNANT LESIONS, POTENTIALLY LEADING TO MORE TAILORED TREATMENT APPROACHES.
2. **ENHANCED IMAGING:** ADVANCES IN IMAGING TECHNOLOGIES, SUCH AS HIGH-RESOLUTION ULTRASOUND AND NUCLEAR MEDICINE, MAY IMPROVE THE IDENTIFICATION AND ASSESSMENT OF THYROID NODULES, INFLUENCING CODING PRACTICES IN THE FUTURE.

POTENTIAL CHANGES IN ICD CODING

1. **EMERGING CODES:** AS NEW UNDERSTANDING OF THYROID CONDITIONS DEVELOPS, THE ICD CODING SYSTEM MAY INTRODUCE ADDITIONAL CODES TO REFLECT THESE CHANGES, ENSURING THAT HEALTHCARE PROVIDERS CAN ACCURATELY DOCUMENT AND CLASSIFY NEW FINDINGS.
2. **INTEGRATION OF CLINICAL GUIDELINES:** FUTURE REVISIONS MAY ALSO INTEGRATE CLINICAL GUIDELINES MORE CLOSELY WITH CODING PRACTICES, ENSURING THAT CODING ALIGNS WITH BEST PRACTICES IN PATIENT CARE.

CONCLUSION

THE **HISTORY OF THYROID NODULES ICD 10** CODING ILLUSTRATES THE EVOLUTION OF MEDICAL KNOWLEDGE AND THE IMPORTANCE OF PRECISE CLASSIFICATION IN CLINICAL PRACTICE. FROM EARLY DESCRIPTIONS OF THYROID CONDITIONS TO THE DETAILED CODES USED TODAY, THE DEVELOPMENT OF THE ICD-10 SYSTEM HAS PLAYED A CRITICAL ROLE IN ADVANCING OUR UNDERSTANDING OF THYROID NODULES. AS DIAGNOSTIC TECHNIQUES AND TREATMENT OPTIONS CONTINUE TO EVOLVE, THE CODING SYSTEM MUST ADAPT TO ENSURE THAT HEALTHCARE PROVIDERS CAN DELIVER THE BEST POSSIBLE CARE TO PATIENTS WITH THYROID CONDITIONS. ACCURATE CODING NOT ONLY FACILITATES EFFECTIVE TREATMENT BUT ALSO SUPPORTS RESEARCH AND QUALITY IMPROVEMENT EFFORTS IN HEALTHCARE.

FREQUENTLY ASKED QUESTIONS

WHAT ARE THYROID NODULES AND HOW ARE THEY CLASSIFIED IN ICD-10?

THYROID NODULES ARE ABNORMAL GROWTHS IN THE THYROID GLAND, CLASSIFIED IN ICD-10 UNDER THE CODES E04.0 TO E04.9, WHICH DETAIL VARIOUS TYPES OF NODULES AND CONDITIONS AFFECTING THE THYROID.

WHAT IS THE HISTORICAL SIGNIFICANCE OF THE ICD CLASSIFICATION FOR THYROID NODULES?

THE ICD CLASSIFICATION FOR THYROID NODULES HAS EVOLVED TO IMPROVE THE PRECISION OF DIAGNOSIS AND TREATMENT, REFLECTING ADVANCEMENTS IN MEDICAL UNDERSTANDING AND THE NEED FOR BETTER PATIENT MANAGEMENT STRATEGIES.

HOW DID THE UNDERSTANDING OF THYROID NODULES CHANGE FROM ICD-9 TO ICD-10?

THE TRANSITION FROM ICD-9 TO ICD-10 INCLUDED MORE SPECIFIC CODES FOR DIFFERENT TYPES OF THYROID NODULES,

ALLOWING FOR BETTER TRACKING OF INCIDENCE AND MANAGEMENT OF THESE CONDITIONS.

WHAT ROLE DO THYROID NODULES PLAY IN ENDOCRINE HEALTH AS PER ICD-10 GUIDELINES?

THYROID NODULES ARE SIGNIFICANT INDICATORS OF POTENTIAL ENDOCRINE DISORDERS, AND ICD-10 GUIDELINES HELP HEALTHCARE PROVIDERS CATEGORIZE AND ADDRESS THESE CONDITIONS EFFECTIVELY.

WHAT ARE COMMON SYMPTOMS ASSOCIATED WITH THYROID NODULES THAT MIGHT LEAD TO AN ICD-10 DIAGNOSIS?

COMMON SYMPTOMS INCLUDE A NOTICEABLE LUMP IN THE NECK, DIFFICULTY SWALLOWING OR BREATHING, AND CHANGES IN VOICE, WHICH MAY PROMPT FURTHER INVESTIGATION AND AN ICD-10 DIAGNOSIS.

HOW ARE THYROID NODULES DIAGNOSED AND CODED IN THE ICD-10 SYSTEM?

DIAGNOSIS TYPICALLY INVOLVES PHYSICAL EXAMINATION, ULTRASOUND, AND SOMETIMES BIOPSY; FINDINGS ARE THEN CODED USING SPECIFIC ICD-10 CODES TO REFLECT THE DIAGNOSIS ACCURATELY.

WHAT IS THE PREVALENCE OF THYROID NODULES ACCORDING TO RECENT STUDIES REFLECTED IN ICD-10 DATA?

RECENT STUDIES SUGGEST THAT THYROID NODULES OCCUR IN ABOUT 50% OF ADULTS, AND ICD-10 DATA HELPS IN UNDERSTANDING THEIR PREVALENCE AND GUIDING PUBLIC HEALTH STRATEGIES.

WHAT ARE THE IMPLICATIONS OF THYROID NODULE CODING IN ICD-10 FOR PATIENT MANAGEMENT?

ACCURATE CODING IN ICD-10 IS CRUCIAL FOR PATIENT MANAGEMENT AS IT AFFECTS TREATMENT PLANS, INSURANCE REIMBURSEMENTS, AND THE TRACKING OF HEALTH OUTCOMES.

HOW DOES THE ICD-10 CLASSIFICATION AID IN THYROID CANCER SCREENING RELATED TO NODULES?

ICD-10 CLASSIFICATIONS HELP IDENTIFY PATIENTS AT RISK FOR THYROID CANCER BASED ON NODULE CHARACTERISTICS, ALLOWING FOR TARGETED SCREENING AND EARLY INTERVENTION.

WHAT FUTURE TRENDS ARE ANTICIPATED IN THE CODING OF THYROID NODULES IN ICD SYSTEMS?

FUTURE TRENDS MAY INVOLVE MORE REFINED CODING OPTIONS AS RESEARCH EVOLVES, FOCUSING ON PERSONALIZED MEDICINE, GENETIC MARKERS, AND ENHANCED DIAGNOSTIC TECHNOLOGIES FOR THYROID NODULES.

Find other PDF article:

<https://soc.up.edu.ph/23-write/files?dataid=SSc18-4439&title=form-penilaian-wawancara-karyawan-baru.pdf>

History Of Thyroid Nodules Icd 10

Check or delete your Chrome browsing history

Your History lists the pages you've visited on Chrome in the last 90 days. It doesn't store: If you're signed in to Chrome and sync your history, then your History also shows pages you've visited on your other devices. If you don't want Chrome to save your browsing history, you can browse in Incognito mode.

Delete your activity - Computer - Google Account Help

Delete your activity automatically You can automatically delete some of the activity in your Google Account. On your computer, go to your Google Account. At the left, click Data & privacy. Under "History settings," click an activity or history setting you want to auto-delete. Click Auto-delete. Click the button for how long you want to keep your activity Next Confirm to save your choice. ...

Access & control activity in your account - Google Help

Under "History settings," click My Activity. To access your activity: Browse your activity, organized by day and time. To find specific activity, at the top, use the search bar and filters. Manage your activity Get details about activity To view details about an item: At ...

history herstory -

From Middle English, from Old French estoire, estorie ("chronicle, history, story") (French histoire), from Latin historia, from Ancient Greek ἱστορία (historía, "learning through research, narration of what is learned"), from ἵστορέω (historēō, "to learn through research, to ...

Find your Google purchase history - Google Pay Help

Find your Google purchase history You can get a list of your charges and transactions for Google purchases and subscriptions. Find transactions for Google products Go to payments.google.com. Click Activity. To get more info, select a transaction.

Manage your Google Maps Timeline

Timeline helps you go back in time and remember where you've been by automatically saving your visits and routes to your Google Maps Timeline on each of your signed-in devices. You can edit your Googl

View or delete your YouTube search history - Google Help

You can manage your search history by deleting individual searches or clearing or pausing search history. Learn more about your data in YouTube and managing your YouTube activity.

Update billing and payments for YouTube TV

If you signed up for YouTube TV through a mobile carrier or internet provider, you'll be billed by them. Learn more about how integrated billing works. To review your payment history, follow these instructions to find your purchases, reservations & subscriptions.

Find & manage your recent chats in Gemini Apps

On your computer, go to gemini.google.com. If your chats are hidden, at the top, click Menu . On the side panel, find your pinned and recent chats.

edge

History WebAssistDatabase db Navicat

Check or delete your Chrome browsing history

Your History lists the pages you've visited on Chrome in the last 90 days. It doesn't store: If you're

signed in to Chrome and sync your history, then your History also shows pages you've visited on ...

Delete your activity - Computer - Google Account Help

Delete your activity automatically You can automatically delete some of the activity in your Google Account. On your computer, go to your Google Account. At the left, click Data & privacy. Under ...

Access & control activity in your account - Google Help

Under "History settings," click My Activity. To access your activity: Browse your activity, organized by day and time. To find specific activity, at the top, use the search bar and filters. Manage your ...

history herstory -

From Middle English, from Old French estoire, estorie ("chronicle, history, story") (French histoire), from Latin historia, from Ancient Greek ἱστορία (historía, "learning through research, narration of ...

Find your Google purchase history - Google Pay Help

Find your Google purchase history You can get a list of your charges and transactions for Google purchases and subscriptions. Find transactions for Google products Go to payments.google.com. ...

Manage your Google Maps Timeline

Timeline helps you go back in time and remember where you've been by automatically saving your visits and routes to your Google Maps Timeline on each of your signed-in devices. You can edit ...

View or delete your YouTube search history - Google Help

You can manage your search history by deleting individual searches or clearing or pausing search history. Learn more about your data in YouTube and managing your YouTube activity.

Update billing and payments for YouTube TV

If you signed up for YouTube TV through a mobile carrier or internet provider, you'll be billed by them. Learn more about how integrated billing works. To review your payment history, follow ...

Find & manage your recent chats in Gemini Apps

On your computer, go to gemini.google.com. If your chats are hidden, at the top, click Menu . On the side panel, find your pinned and recent chats.

edge

History WebAssistDatabase db Navicat ...

Explore the history of thyroid nodules ICD 10 coding

[Back to Home](#)