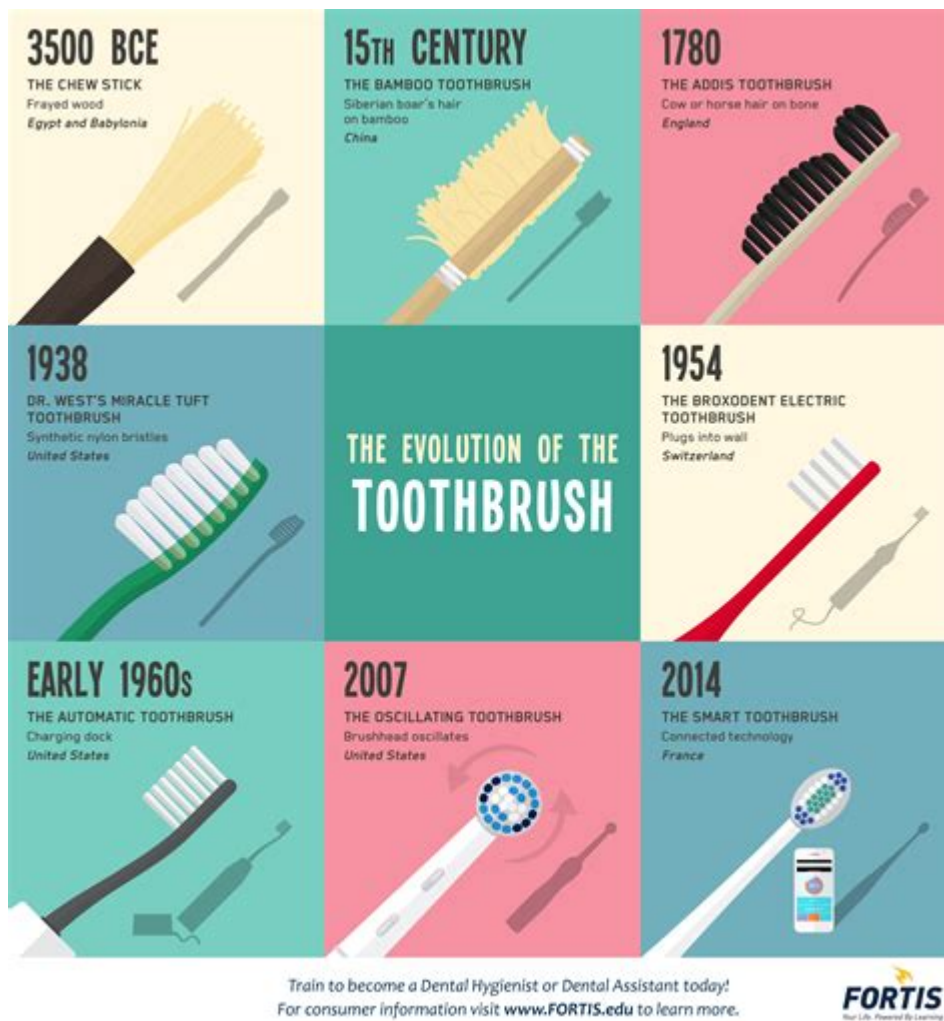


History Of The Toothbrush Timeline



HISTORY OF THE TOOTHBRUSH TIMELINE REFLECTS A FASCINATING EVOLUTION OF A TOOL THAT HAS BECOME AN ESSENTIAL PART OF PERSONAL HYGIENE ACROSS THE GLOBE. THE TOOTHBRUSH, AS WE KNOW IT TODAY, HAS UNDERGONE SIGNIFICANT TRANSFORMATIONS SINCE ITS INCEPTION, WITH EACH ITERATION REFLECTING THE CULTURAL AND TECHNOLOGICAL ADVANCEMENTS OF ITS TIME. THIS ARTICLE WILL EXPLORE THE KEY MILESTONES IN THE HISTORY OF THE TOOTHBRUSH, TRACING ITS DEVELOPMENT FROM ANCIENT CIVILIZATIONS TO MODERN INNOVATIONS.

EARLY BEGINNINGS

THE ORIGINS OF ORAL HYGIENE PRACTICES DATE BACK THOUSANDS OF YEARS, WITH VARIOUS CULTURES EMPLOYING RUDIMENTARY TOOLS TO CLEAN THEIR TEETH.

ANCIENT CIVILIZATIONS

1. CHEWING STICKS (3000 BC)

- ONE OF THE EARLIEST FORMS OF DENTAL CARE INVOLVED USING CHEWING STICKS. THESE WERE TWIGS OR ROOTS THAT COULD BE CHEWED ON ONE END TO CREATE A FRAYED BRUSH-LIKE TIP. ANCIENT RECORDS SHOW THAT CIVILIZATIONS IN MESOPOTAMIA AND EGYPT UTILIZED THESE STICKS FOR ORAL HYGIENE.

2. EGYPTIANS (1500 BC)

- ARCHAEOLOGICAL FINDINGS SUGGEST THAT THE ANCIENT EGYPTIANS CREATED A FORM OF TOOTHBRUSH BY USING FRAYED ENDS OF STICKS FROM THE SALVADORA PERSICA TREE, ALSO KNOWN AS THE "TOOTHBRUSH TREE." THEY UNDERSTOOD THE IMPORTANCE OF DENTAL CARE AND EVEN FORMULATED EARLY TOOTHPASTE USING INGREDIENTS LIKE CRUSHED EGGSHELLS AND GROUND OX HOOVES.

3. CHINESE INNOVATIONS (CIRCA 619-907 AD)

- THE CHINESE MADE SIGNIFICANT ADVANCEMENTS IN DENTAL CARE BY CREATING BRUSHES WITH BRISTLES MADE FROM ANIMAL HAIR, ATTACHED TO A BAMBOO OR BONE HANDLE. THESE EARLY TOOTHBRUSHES WERE USED BY THE ELITE AND SET THE STANDARD FOR FUTURE DESIGNS.

THE BIRTH OF THE MODERN TOOTHBRUSH

THE TRANSITION FROM ANCIENT PRACTICES TO THE MODERN TOOTHBRUSH BEGAN IN THE 18TH CENTURY.

18TH CENTURY DEVELOPMENTS

1. FIRST MODERN TOOTHBRUSH (1780)

- WILLIAM ADDIS, AN ENGLISHMAN, IS CREDITED WITH CREATING THE FIRST MASS-PRODUCED TOOTHBRUSH. WHILE IN PRISON, HE FASHIONED A BRUSH BY DRILLING HOLES INTO A BONE AND INSERTING BRISTLES FROM THE TAIL OF A HOG. AFTER HIS RELEASE, HE BEGAN MANUFACTURING THESE BRUSHES, FOUNDING ONE OF THE FIRST TOOTHBRUSH COMPANIES.

2. PATENT INNOVATIONS (1857)

- THE FIRST PATENT FOR A TOOTHBRUSH WAS ISSUED IN THE UNITED STATES TO H. N. WADSWORTH. THIS DESIGN FEATURED A WOODEN HANDLE AND BRISTLES, PAVING THE WAY FOR FUTURE INNOVATIONS.

THE 19TH CENTURY: INDUSTRIALIZATION AND ACCESSIBILITY

AS THE INDUSTRIAL REVOLUTION PROGRESSED, THE TOOTHBRUSH BECAME MORE WIDELY AVAILABLE AND AFFORDABLE.

MASS PRODUCTION

1. MANUFACTURING ADVANCES (1885)

- THE INTRODUCTION OF MASS PRODUCTION TECHNIQUES ALLOWED FOR THE CREATION OF TOOTHBRUSHES ON A LARGER SCALE. THE FIRST TOOTHBRUSHES MADE FROM PLASTIC CAME INTO PLAY, MARKING A SIGNIFICANT SHIFT IN PRODUCTION MATERIALS.

2. BRISTLE VARIATIONS

- BY THE LATE 19TH CENTURY, TOOTHBRUSHES WERE AVAILABLE WITH VARYING BRISTLE STIFFNESS, CATERING TO DIFFERENT PREFERENCES AND DENTAL NEEDS.

INTRODUCTION OF NYLON BRISTLES

1. NYLON REVOLUTION (1938)

- THE INVENTION OF NYLON BY WALLACE CAROTHERS AT DUPONT LED TO THE INTRODUCTION OF NYLON BRISTLES IN TOOTHBRUSHES, REPLACING ANIMAL HAIR. THIS INNOVATION MADE TOOTHBRUSHES MORE HYGIENIC AND DURABLE.

THE 20TH CENTURY: HEALTH AWARENESS AND DESIGN INNOVATIONS

THE 20TH CENTURY SAW A SIGNIFICANT INCREASE IN PUBLIC AWARENESS REGARDING DENTAL HEALTH, LEADING TO DESIGN INNOVATIONS AND IMPROVED ORAL HYGIENE PRACTICES.

HEALTH CAMPAIGNS

1. DENTAL HYGIENE PROMOTION (1940s-1950s)

- ORGANIZATIONS LIKE THE AMERICAN DENTAL ASSOCIATION (ADA) BEGAN PROMOTING DENTAL HYGIENE, LEADING TO THE WIDESPREAD ADOPTION OF REGULAR TOOTH BRUSHING. PUBLIC SERVICE ANNOUNCEMENTS AND EDUCATIONAL CAMPAIGNS EMPHASIZED THE IMPORTANCE OF BRUSHING TEETH TWICE A DAY.

2. ELECTRIC TOOTHBRUSHES (1960)

- THE FIRST ELECTRIC TOOTHBRUSH, THE BROXODENT, WAS INTRODUCED, PROVIDING AN ALTERNATIVE FOR THOSE SEEKING A MORE EFFICIENT WAY TO BRUSH THEIR TEETH. THIS WAS PARTICULARLY BENEFICIAL FOR INDIVIDUALS WITH LIMITED MANUAL DEXTERITY.

DESIGN IMPROVEMENTS

1. ERGONOMIC HANDLES (1970s)

- TOOTHBRUSH DESIGNS BEGAN TO INCORPORATE ERGONOMIC HANDLES FOR BETTER GRIP AND COMFORT DURING BRUSHING. VARIOUS SHAPES AND SIZES WERE INTRODUCED TO CATER TO DIFFERENT USER PREFERENCES.

2. SOFT BRISTLES (1980s)

- THE INTRODUCTION OF SOFT BRISTLES BECAME POPULAR AS STUDIES SHOWED THAT THEY WERE EQUALLY EFFECTIVE AT CLEANING TEETH WHILE BEING GENTLER ON GUMS.

THE 21ST CENTURY: TECHNOLOGICAL ADVANCEMENTS AND SUSTAINABILITY

AS WE ENTERED THE 21ST CENTURY, TOOTHBRUSH TECHNOLOGY CONTINUED TO EVOLVE, FOCUSING ON EFFICIENCY, SUSTAINABILITY, AND USER CUSTOMIZATION.

SMART TOOTHBRUSHES

1. CONNECTED DEVICES (2010s)

- THE RISE OF SMART TECHNOLOGY LED TO THE DEVELOPMENT OF CONNECTED TOOTHBRUSHES THAT CAN TRACK BRUSHING HABITS AND PROVIDE FEEDBACK VIA SMARTPHONE APPS. THESE DEVICES ENCOURAGE BETTER BRUSHING TECHNIQUES AND HABITS.

2. AI INTEGRATION

- SOME MODERN TOOTHBRUSHES UTILIZE ARTIFICIAL INTELLIGENCE TO ANALYZE BRUSHING PATTERNS AND SUGGEST IMPROVEMENTS, FOSTERING BETTER ORAL HYGIENE PRACTICES.

SUSTAINABILITY MOVEMENT

1. BAMBOO TOOTHBRUSHES

- IN RESPONSE TO GROWING ENVIRONMENTAL CONCERNS, BAMBOO TOOTHBRUSHES HAVE GAINED POPULARITY AS A SUSTAINABLE ALTERNATIVE TO PLASTIC. THESE BRUSHES ARE BIODEGRADABLE AND REDUCE PLASTIC WASTE IN LANDFILLS AND OCEANS.

2. RECYCLABLE OPTIONS

- MANY COMPANIES ARE NOW OFFERING TOOTHBRUSHES MADE FROM RECYCLABLE MATERIALS, PROMOTING ECO-FRIENDLINESS AND REDUCING THE CARBON FOOTPRINT ASSOCIATED WITH TRADITIONAL TOOTHBRUSH PRODUCTION.

THE FUTURE OF TOOTHBRUSHES

THE FUTURE PROMISES FURTHER ADVANCEMENTS IN TOOTHBRUSH TECHNOLOGY, WITH ONGOING RESEARCH AND DEVELOPMENT AIMED AT IMPROVING ORAL HEALTH OUTCOMES.

BIOTECHNOLOGY INNOVATIONS

1. SMART MATERIALS

- RESEARCHERS ARE EXPLORING THE USE OF SMART MATERIALS THAT CAN CHANGE PROPERTIES BASED ON THE ENVIRONMENT, SUCH AS BRISTLES THAT CAN ADAPT THEIR STIFFNESS DEPENDING ON THE PRESSURE APPLIED DURING BRUSHING.

2. NANOTECHNOLOGY

- THE INTEGRATION OF NANOTECHNOLOGY IN TOOTHBRUSH DESIGN MAY LEAD TO BRUSHES THAT CAN EFFECTIVELY REMOVE PLAQUE AT A MICROSCOPIC LEVEL, ENHANCING THE CLEANING PROCESS.

PERSONALIZATION TRENDS

1. CUSTOMIZED BRUSHES

- PERSONALIZED TOOTHBRUSHES TAILORED TO INDIVIDUAL DENTAL NEEDS, INCLUDING CUSTOMIZED BRISTLE PATTERNS AND HANDLE DESIGNS, ARE ON THE HORIZON, CATERING TO THE UNIQUE REQUIREMENTS OF EACH USER.

2. SUBSCRIPTION SERVICES

- SUBSCRIPTION-BASED SERVICES THAT DELIVER PERSONALIZED TOOTHBRUSHES AND DENTAL CARE PRODUCTS DIRECTLY TO CONSUMERS ARE BECOMING INCREASINGLY POPULAR, EMPHASIZING CONVENIENCE AND TAILORED CARE.

CONCLUSION

THE HISTORY OF THE TOOTHBRUSH TIMELINE REFLECTS A REMARKABLE JOURNEY FROM PRIMITIVE ORAL HYGIENE PRACTICES TO THE SOPHISTICATED TOOLS WE USE TODAY. AS SOCIETY CONTINUES TO PLACE GREATER EMPHASIS ON DENTAL HEALTH AND ENVIRONMENTAL SUSTAINABILITY, THE TOOTHBRUSH IS LIKELY TO EVOLVE FURTHER, INCORPORATING NEW TECHNOLOGIES AND MATERIALS THAT MEET THE NEEDS OF FUTURE GENERATIONS. UNDERSTANDING THIS HISTORY NOT ONLY HIGHLIGHTS THE IMPORTANCE OF DENTAL HYGIENE BUT ALSO ILLUSTRATES HOW A SIMPLE TOOL CAN ADAPT AND INNOVATE IN RESPONSE TO CHANGING SOCIETAL VALUES AND SCIENTIFIC ADVANCEMENTS.

FREQUENTLY ASKED QUESTIONS

WHEN WAS THE FIRST KNOWN USE OF A TOOTHBRUSH?

THE FIRST KNOWN USE OF A TOOTHBRUSH DATES BACK TO AROUND 3500 BC IN ANCIENT EGYPT, WHERE PEOPLE USED FRAYED TWIGS TO CLEAN THEIR TEETH.

WHAT MATERIALS WERE USED TO MAKE THE FIRST MODERN TOOTHBRUSH?

THE FIRST MODERN TOOTHBRUSH, CREATED IN 1938, WAS MADE WITH NYLON BRISTLES AND A PLASTIC HANDLE, REPLACING EARLIER DESIGNS MADE WITH ANIMAL HAIR.

WHO IS CREDITED WITH INVENTING THE FIRST MASS-PRODUCED TOOTHBRUSH?

THE FIRST MASS-PRODUCED TOOTHBRUSH WAS CREATED BY WILLIAM ADDIS IN 1780 IN ENGLAND, USING A BONE HANDLE AND BRISTLES MADE FROM ANIMAL HAIR.

WHEN DID THE FIRST ELECTRIC TOOTHBRUSH COME TO MARKET?

THE FIRST ELECTRIC TOOTHBRUSH WAS INTRODUCED IN 1954, KNOWN AS THE BROXODENT, AND WAS DEVELOPED IN SWITZERLAND.

HOW DID TOOTHBRUSH DESIGN EVOLVE IN THE 20TH CENTURY?

IN THE 20TH CENTURY, TOOTHBRUSH DESIGNS EVOLVED TO INCLUDE ERGONOMIC HANDLES, VARIED BRISTLE TYPES, AND THE INTRODUCTION OF SOFT BRISTLES FOR IMPROVED DENTAL CARE.

WHEN DID TOOTHPASTE BECOME COMMONLY USED WITH TOOTHBRUSHES?

TOOTHPASTE BEGAN TO BE COMMONLY USED WITH TOOTHBRUSHES IN THE 19TH CENTURY, WITH COMMERCIAL FORMULATIONS BECOMING AVAILABLE IN TUBE FORM IN THE 1890S.

WHAT ROLE DID THE AMERICAN DENTAL ASSOCIATION PLAY IN TOOTHBRUSH HISTORY?

THE AMERICAN DENTAL ASSOCIATION (ADA) WAS ESTABLISHED IN 1859 AND HAS PLAYED A SIGNIFICANT ROLE IN PROMOTING ORAL HEALTH AND ENDORSING EFFECTIVE TOOTHBRUSH DESIGNS AND PRACTICES.

WHEN DID DISPOSABLE TOOTHBRUSHES BECOME POPULAR?

DISPOSABLE TOOTHBRUSHES BECAME POPULAR IN THE LATE 20TH CENTURY, PARTICULARLY IN THE 1980S, AS CONVENIENCE AND TRAVEL-FRIENDLY DESIGNS GAINED TRACTION.

WHAT INNOVATIONS HAVE BEEN MADE IN TOOTHBRUSH TECHNOLOGY IN RECENT YEARS?

RECENT INNOVATIONS IN TOOTHBRUSH TECHNOLOGY INCLUDE SMART TOOTHBRUSHES WITH BLUETOOTH CONNECTIVITY, TIMERS, AND PRESSURE SENSORS TO IMPROVE BRUSHING HABITS.

WHEN DID BAMBOO TOOTHBRUSHES START GAINING POPULARITY?

BAMBOO TOOTHBRUSHES BEGAN GAINING POPULARITY IN THE EARLY 21ST CENTURY AS PART OF THE MOVEMENT TOWARD SUSTAINABLE AND ECO-FRIENDLY PRODUCTS.

Find other PDF article:

<https://soc.up.edu.ph/43-block/Book?dataid=Xhn87-2476&title=nivaldo-tro-chemistry-a-molecular-ap-proach.pdf>

[History Of The Toothbrush Timeline](#)

Check or delete your Chrome browsing history

Your History lists the pages you've visited on Chrome in the last 90 days. It doesn't store: If you're signed in to Chrome and sync your history, then your History also shows pages you've visited ...

Delete your activity - Computer - Google Account Help

Delete your activity automatically You can automatically delete some of the activity in your Google Account. On your computer, go to your Google Account. At the left, click Data & privacy. ...

Access & control activity in your account - Google Help

Under "History settings," click My Activity. To access your activity: Browse your activity, organized by day and time. To find specific activity, at the top, use the search bar and filters. Manage ...

history herstory -

From Middle English, from Old French estoire, estorie ("chronicle, history, story") (French histoire), from Latin historia, from Ancient Greek ἱστορία (historía, "learning through research, narration ...

Find your Google purchase history - Google Pay Help

Find your Google purchase history You can get a list of your charges and transactions for Google purchases and subscriptions. Find transactions for Google products Go to ...

Manage your Google Maps Timeline

Timeline helps you go back in time and remember where you've been by automatically saving your visits and routes to your Google Maps Timeline on each of your signed-in devices. You ...

View or delete your YouTube search history - Google Help

You can manage your search history by deleting individual searches or clearing or pausing search history. Learn more about your data in YouTube and managing your YouTube activity.

Update billing and payments for YouTube TV

If you signed up for YouTube TV through a mobile carrier or internet provider, you'll be billed by them. Learn more about how integrated billing works. To review your payment history, follow ...

Find & manage your recent chats in Gemini Apps

On your computer, go to gemini.google.com. If your chats are hidden, at the top, click Menu . On the side panel, find your pinned and recent chats.

edge

History WebAssistDatabase db Navicat ...

Check or delete your Chrome browsing history

Your History lists the pages you've visited on Chrome in the last 90 days. It doesn't store: If you're signed in to Chrome and sync your history, then your History also shows pages you've visited ...

Delete your activity - Computer - Google Account Help

Delete your activity automatically You can automatically delete some of the activity in your Google Account. On your computer, go to your Google Account. At the left, click Data & privacy. ...

Access & control activity in your account - Google Help

Under "History settings," click My Activity. To access your activity: Browse your activity, organized by day and time. To find specific activity, at the top, use the search bar and filters. Manage ...

history herstory -

From Middle English, from Old French estoire, estorie (“chronicle, history, story”) (French histoire), from Latin historia, from Ancient Greek ἱστορία (historía, “learning through research, narration ...

[Find your Google purchase history - Google Pay Help](#)

Find your Google purchase history You can get a list of your charges and transactions for Google purchases and subscriptions. Find transactions for Google products Go to ...

Manage your Google Maps Timeline

Timeline helps you go back in time and remember where you’ve been by automatically saving your visits and routes to your Google Maps Timeline on each of your signed-in devices. You ...

View or delete your YouTube search history - Google Help

You can manage your search history by deleting individual searches or clearing or pausing search history. Learn more about your data in YouTube and managing your YouTube activity.

Update billing and payments for YouTube TV

If you signed up for YouTube TV through a mobile carrier or internet provider, you’ll be billed by them. Learn more about how integrated billing works. To review your payment history, follow ...

Find & manage your recent chats in Gemini Apps

On your computer, go to gemini.google.com. If your chats are hidden, at the top, click Menu . On the side panel, find your pinned and recent chats.

edge

History WebAssistDatabase db Navicat ...

Explore the fascinating history of the toothbrush timeline

[Back to Home](#)