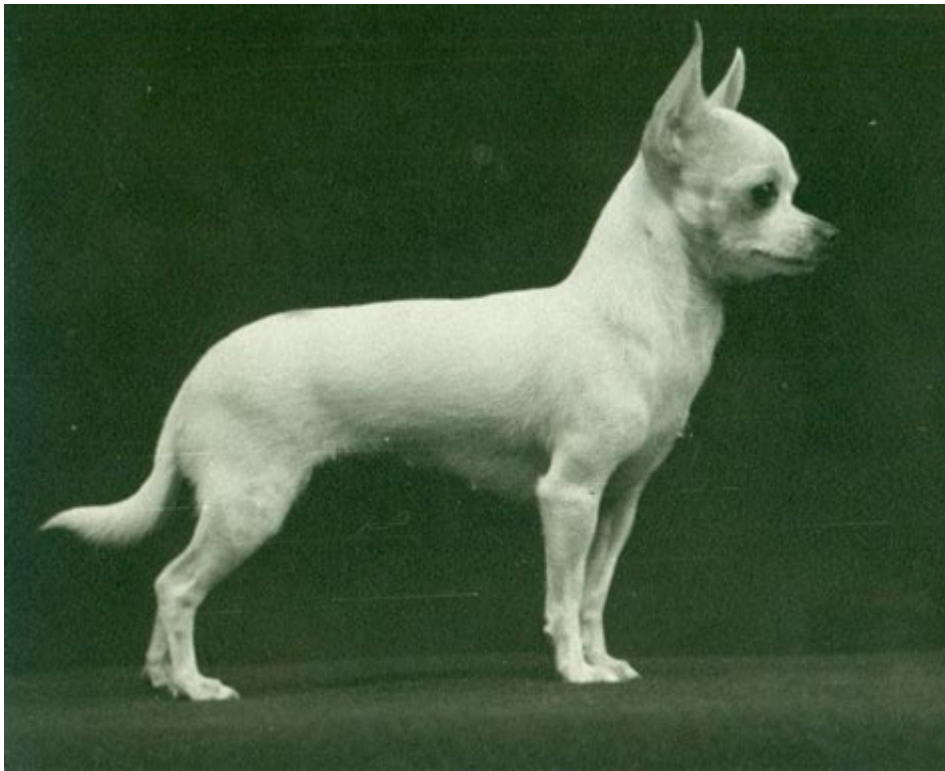


History Of The Chihuahua Breed



History of the chihuahua breed is a fascinating journey that dates back thousands of years, intertwining the cultures of ancient civilizations and the rise of modern pet ownership. Known for their small size and spirited personality, Chihuahuas have become one of the most popular dog breeds in the world. This article will delve into the origins, historical significance, and evolution of the Chihuahua breed, providing a comprehensive look at how these charming little dogs have captured the hearts of many.

Origins of the Chihuahua Breed

The Chihuahua's lineage can be traced back to the ancient civilizations of Mexico. Archaeological findings and historical documents suggest that the breed is descended from the Techichi, a small companion dog that existed as far back as the 9th century AD. The Techichi played a significant role in the lives of the ancient Toltec civilization.

The Techichi: The Ancestors of Chihuahuas

The Techichi were not just pets; they held religious and cultural significance. They were believed to possess supernatural qualities and were often associated with the afterlife. Here are some key points about the Techichi:

- Cultural Significance: Techichis were often buried alongside their owners, indicating their importance in ancient Mexica culture.
- Physical Traits: The Techichi was smaller than many of their contemporaries and had a similar appearance to modern Chihuahuas, though they were often more robust.
- Role in Society: These dogs served various roles, including as companions, guardians, and aids for their owners in spiritual rituals.

The Chihuahua in Pre-Columbian Times

The Chihuahua breed as we know it began to take shape during the rise of the Aztec Empire. Historical records indicate that the Aztecs continued to breed the Techichi, enhancing its characteristics over generations.

The Aztec Influence

The Aztecs played a crucial role in the Chihuahua's development. They valued these dogs for their companionship as well as their perceived spiritual attributes. Key aspects of their influence include:

- Religious Ceremonies: Chihuahuas were used in various religious ceremonies and were believed to guide souls to the afterlife.
- Trade and Travel: As the Aztecs expanded their empire, they traded these small dogs, spreading their popularity across different regions of Mesoamerica.
- Cultural Depictions: Chihuahuas were often depicted in Aztec art and pottery, showcasing their importance in daily life and spirituality.

The Modern Chihuahua: From Ancient Times to Today

The Chihuahua's journey continued through the centuries, especially following the Spanish conquest of Mexico in the 16th century. The breed faced challenges but eventually found its way into the hearts of dog lovers around the world.

Introduction to the United States

The modern Chihuahua began to gain recognition in the United States in the late 19th and early 20th centuries. Some important milestones include:

1. 1904: The first Chihuahua was registered with the American Kennel Club

(AKC).

2. 1952: The breed was officially recognized by the AKC, solidifying its status as a distinct breed in the dog community.

3. Pop Culture: The late 20th century saw a surge in Chihuahua popularity due to celebrity endorsements and appearances in movies, such as "Legally Blonde" and "Beverly Hills Chihuahua."

Characteristics of the Chihuahua

Chihuahuas are known for their distinct physical traits and vibrant personalities. Understanding these characteristics can provide insight into why they have become such beloved pets.

Physical Traits

Chihuahuas are characterized by several notable features:

- Size: They are one of the smallest dog breeds, typically weighing between 2 to 6 pounds.
- Coat Variations: Chihuahuas can have either a smooth coat or a long coat, available in a variety of colors and patterns.
- Distinctive Features: They have large, expressive eyes and erect ears, contributing to their endearing appearance.

Temperament

The personality of a Chihuahua is often described as:

- Loyal: They tend to form strong bonds with their owners and can be protective.
- Alert: Chihuahuas are known for their keen senses and can be excellent watchdogs despite their size.
- Playful: They have a lively spirit and enjoy engaging in play, making them entertaining companions.

Chihuahuas in Modern Society

Today, Chihuahuas are one of the most recognized dog breeds worldwide. Their popularity has led to a variety of specialized care and products tailored to their needs.

Health Considerations

Like all breeds, Chihuahuas are prone to certain health issues. Common health concerns include:

- Dental Problems: Due to their small mouths, dental care is crucial.
- Patellar Luxation: A condition where the kneecap dislocates, which can lead to mobility issues.
- Heart Issues: Chihuahuas can be prone to heart disease, especially as they age.

Training and Socialization

Training a Chihuahua requires consistency and positive reinforcement. Here are some tips for effective training:

- Start Early: Begin socialization and training when they are young to instill good behavior.
- Positive Reinforcement: Use treats and praise to encourage desired behaviors.
- Regular Exercise: Despite their size, Chihuahuas require daily exercise to maintain their health and happiness.

Conclusion

The **history of the Chihuahua breed** is rich and varied, reflecting the cultural shifts and societal changes that have taken place over centuries. From their ancient roots as companions to the Toltecs and Aztecs to their modern status as beloved pets, Chihuahuas have a unique place in the hearts of dog lovers around the world. Understanding their history not only enhances our appreciation of these small but mighty dogs but also guides us in providing the best care for them in our homes today.

Frequently Asked Questions

What is the origin of the Chihuahua breed?

The Chihuahua breed originated in Mexico, specifically from a region called the state of Chihuahua, where it was developed from small companion dogs brought by the ancient Toltec civilization.

How did the Chihuahua get its name?

The breed is named after the Mexican state of Chihuahua, where the dog was

first recognized as a distinct breed in the mid-19th century.

What ancient civilization is believed to have contributed to the Chihuahua's ancestry?

The Chihuahua is believed to descend from the Techichi, a small dog kept by the ancient Toltecs, who revered the breed for its companionship and spiritual significance.

When was the Chihuahua officially recognized by kennel clubs?

The American Kennel Club (AKC) officially recognized the Chihuahua in 1904, helping to establish the breed as one of the most popular toy breeds in the United States.

What are the two main types of Chihuahuas?

The two main types of Chihuahuas are the smooth coat and the long coat, differing primarily in fur texture and length.

How has the Chihuahua's popularity changed over time?

The Chihuahua's popularity surged in the late 20th century, becoming a fashionable pet among celebrities and gaining widespread recognition through media and pop culture.

What role did the Chihuahua play in Mexican culture?

In Mexican culture, the Chihuahua is often seen as a symbol of companionship and loyalty, and it has been featured in various forms of art, folklore, and even as a representation of the nation.

What health issues are common in Chihuahuas?

Chihuahuas are prone to certain health issues such as dental problems, patellar luxation, and heart disease, which owners should be aware of for proper care.

What is a notable characteristic of Chihuahuas?

Chihuahuas are known for their large personalities despite their small size, often displaying boldness and confidence that belies their stature.

How do Chihuahuas typically behave with their owners?

Chihuahuas are typically very affectionate and loyal to their owners, often forming strong bonds and showing a protective nature towards their families.

Find other PDF article:

<https://soc.up.edu.ph/24-mark/Book?docid=eRY19-7895&title=gace-basic-skills-practice-test.pdf>

History Of The Chihuahua Breed

Check or delete your Chrome browsing history

Your History lists the pages you've visited on Chrome in the last 90 days. It doesn't store: If you're signed in to Chrome and sync your history, then your History also shows pages you've visited on ...

Delete your activity - Computer - Google Account Help

Delete your activity automatically You can automatically delete some of the activity in your Google Account. On your computer, go to your Google Account. At the left, click Data & privacy. Under ...

Access & control activity in your account - Google Help

Under "History settings," click My Activity. To access your activity: Browse your activity, organized by day and time. To find specific activity, at the top, use the search bar and filters. Manage your ...

history herstory -

From Middle English, from Old French estoire, estorie ("chronicle, history, story") (French histoire), from Latin historia, from Ancient Greek ἱστορία (historía, "learning through research, narration of ...

Find your Google purchase history - Google Pay Help

Find your Google purchase history You can get a list of your charges and transactions for Google purchases and subscriptions. Find transactions for Google products Go to payments.google.com. ...

Manage your Google Maps Timeline

Timeline helps you go back in time and remember where you've been by automatically saving your visits and routes to your Google Maps Timeline on each of your signed-in devices. You can edit ...

View or delete your YouTube search history - Google Help

You can manage your search history by deleting individual searches or clearing or pausing search history. Learn more about your data in YouTube and managing your YouTube activity.

Update billing and payments for YouTube TV

If you signed up for YouTube TV through a mobile carrier or internet provider, you'll be billed by them. Learn more about how integrated billing works. To review your payment history, follow ...

Find & manage your recent chats in Gemini Apps

On your computer, go to gemini.google.com. If your chats are hidden, at the top, click Menu . On the side panel, find your pinned and recent chats.

edge ...

History WebAssistDatabase db Navicat ...

Check or delete your Chrome browsing history

Your History lists the pages you've visited on Chrome in the last 90 days. It doesn't store: If you're

signed in to Chrome ...

Delete your activity - Computer - Google Account Help

Delete your activity automatically You can automatically delete some of the activity in your Google Account. On your ...

Access & control activity in your account - Google Help

Under "History settings," click My Activity. To access your activity: Browse your activity, organized by day and time. To ...

history herstory -

From Middle English, from Old French estoire, estorie (“chronicle, history, story”) (French histoire), from Latin historia, ...

Find your Google purchase history - Google Pay Help

Find your Google purchase history You can get a list of your charges and transactions for Google purchases and ...

Explore the fascinating history of the Chihuahua breed

[Back to Home](#)