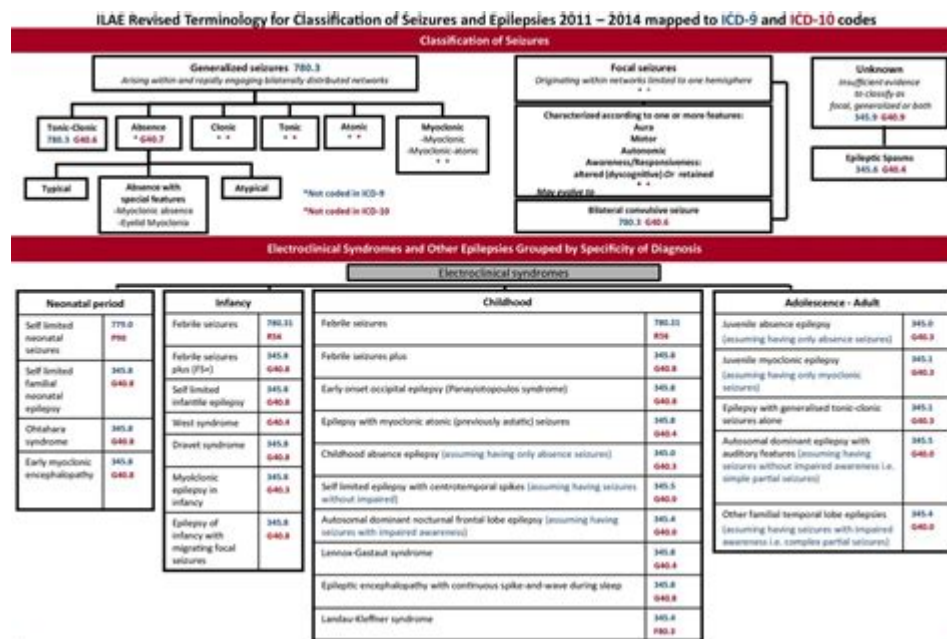


## History Seizures Icd 10



## Understanding History Seizures ICD 10

**History seizures ICD 10** refers to the classification codes used in the International Classification of Diseases, Tenth Revision (ICD-10), specifically for documenting and diagnosing seizure disorders. Seizures are neurological events that result from abnormal electrical activity in the brain, leading to a range of symptoms, from mild, brief lapses of attention to severe convulsions. Accurate coding is crucial for effective patient management, insurance billing, and epidemiological research.

## What are Seizures?

Seizures can be categorized into several types, primarily divided into two main categories: focal seizures and generalized seizures. Understanding these variations is essential for proper diagnosis and treatment.

## Types of Seizures

1. **Focal Seizures:** These originate in a specific area of the brain and can be further divided into:
  - Focal aware seizures (formerly known as simple partial seizures)
  - Focal impaired awareness seizures (formerly known as complex partial seizures)
2. **Generalized Seizures:** These involve both hemispheres of the brain from the onset and include:
  - Tonic-clonic seizures (formerly known as grand mal seizures)
  - Absence seizures (formerly known as petit mal seizures)

- Myoclonic seizures
- Atonic seizures

## The Importance of ICD-10 Codes

The ICD-10 coding system provides a standardized method for documenting and classifying health conditions, which is critical for several reasons:

- **Clinical Management:** Accurate coding helps healthcare providers to understand a patient's medical history, leading to better treatment plans.
- **Insurance Billing:** Insurance companies require specific ICD-10 codes to process claims and reimburse healthcare providers.
- **Epidemiological Research:** Researchers use these codes to track the prevalence and incidence of seizure disorders, contributing to public health initiatives.

## ICD-10 Codes for Seizures

The ICD-10 coding system includes a comprehensive list of codes for various seizure types. These codes help categorize the condition based on specific characteristics. Below are some of the key codes associated with seizures:

### Common ICD-10 Codes for Seizures

1. G40.0 - Localization-related (focal) epilepsy and epileptic syndromes
2. G40.1 - Generalized epilepsy and epileptic syndromes
3. G40.2 - Epilepsy, unspecified
4. G40.3 - Other epilepsy
5. G40.9 - Epilepsy, unspecified
6. R56.0 - Febrile seizures
7. R56.9 - Unspecified convulsions

Each of these codes provides specific details about the nature of the seizure, enabling healthcare providers to make informed decisions regarding diagnosis and treatment.

## Documenting History of Seizures

When documenting a patient's history of seizures, healthcare providers must consider several factors that can influence the coding process. The history must be comprehensive and may include:

1. **Type of Seizures:** Document whether the seizures are focal or generalized.
2. **Frequency:** Note how often seizures occur and any patterns observed.
3. **Triggers:** Identify potential triggers, such as stress, lack of sleep, or specific environmental factors.
4. **Duration:** Record the duration of each seizure episode.
5. **Postictal State:** Document any postictal symptoms, such as confusion or fatigue.

This thorough documentation not only aids in selecting the appropriate ICD-10 codes but also enhances the quality of care provided to the patient.

## Challenges in Coding Seizures

While the ICD-10 system provides a structured approach to coding seizures, various challenges can arise. These challenges may include:

### Variability in Clinical Presentation

Seizures can present differently in each individual. The same type of seizure can manifest in various ways, making it difficult to assign a specific code without thorough documentation of the patient's experiences.

### Changing Terminology

The transition from older classifications, such as the International League Against Epilepsy (ILAE) classifications, to the ICD-10 codes can lead to confusion among healthcare providers. It's crucial to stay updated with the latest terminology and coding guidelines.

### Insufficient Information

In some cases, patients may not provide enough historical information regarding their seizure episodes. This lack of detail can lead to incomplete coding, affecting treatment and insurance claims.

## Future Directions in Seizure Coding

As medical knowledge advances and technology evolves, the approach to coding seizures may also change. Some potential future directions include:

1. Integration with Electronic Health Records (EHRs): Enhanced integration of ICD-10 codes within EHR systems can streamline the documentation process and reduce the potential for errors.
2. Use of AI and Machine Learning: Artificial intelligence could assist in analyzing patient data to suggest appropriate coding based on historical patterns and clinical presentations.
3. Continued Education: Ongoing training for healthcare providers on the nuances of ICD-10 coding will help improve accuracy and consistency across the board.

## Conclusion

In summary, understanding **history seizures ICD 10** is essential for accurate diagnosis, effective treatment, and appropriate billing practices. The ICD-10 coding system provides a framework for healthcare providers to document seizure disorders comprehensively. By navigating the complexities of seizure types, coding challenges, and future advancements, healthcare professionals can ensure better patient outcomes and contribute to the overall understanding of seizure disorders in the medical community. Continuous education and adaptation to changing coding practices will be key in maintaining high standards of care for individuals experiencing seizures.

## Frequently Asked Questions

### What does ICD-10 stand for in the context of seizure history?

ICD-10 stands for the International Classification of Diseases, 10th Revision. It is a coding system used to classify and code diagnoses, symptoms, and procedures, including those related to seizure disorders.

### How are seizures classified in the ICD-10 system?

In the ICD-10 system, seizures are classified under the code range G40, which includes various types of epilepsy and recurrent seizures. Specific codes differentiate between generalized and focal seizures.

### Why is it important for healthcare providers to document a patient's seizure history using ICD-10 codes?

Accurate documentation of a patient's seizure history using ICD-10 codes is crucial for proper diagnosis, treatment planning, insurance reimbursement, and tracking public health statistics related to epilepsy and seizure disorders.

### What are some common ICD-10 codes for different types of seizures?

Common ICD-10 codes for seizures include G40.0 for localization-related (focal) seizures, G40.1 for generalized seizures, and G40.9 for unspecified epilepsy and recurrent seizures.

# How does the history of seizures impact the choice of ICD-10 coding?

The history of seizures impacts ICD-10 coding by determining the specific type and frequency of seizures a patient experiences, which helps in selecting the appropriate code that reflects the patient's condition accurately.

Find other PDF article:

<https://soc.up.edu.ph/64-frame/files?trackid=QNh57-2939&title=verbs-present-tense-worksheet.pdf>

## History Seizures Icd 10

### **Check or delete your Chrome browsing history**

Your History lists the pages you've visited on Chrome in the last 90 days. It doesn't store: If you're signed in to ...

*Delete your activity - Computer - Google Account Help*

Delete your activity automatically You can automatically delete some of the activity in your Google Account. On ...

### **Access & control activity in your account - Google Help**

Under "History settings," click My Activity. To access your activity: Browse your activity, organized by day and ...

history herstory -

From Middle English, from Old French estoire, estorie ("chronicle, history, story") (French histoire), from Latin ...

Find your Google purchase history - Google Pay Help

Find your Google purchase history You can get a list of your charges and transactions for Google purchases ...

### **Check or delete your Chrome browsing history**

Your History lists the pages you've visited on Chrome in the last 90 days. It doesn't store: If you're signed in to Chrome and sync your history, then your History also shows pages you've visited ...

### **Delete your activity - Computer - Google Account Help**

Delete your activity automatically You can automatically delete some of the activity in your Google Account. On your computer, go to your Google Account. At the left, click Data & privacy. ...

Access & control activity in your account - Google Help

Under "History settings," click My Activity. To access your activity: Browse your activity, organized by day and time. To find specific activity, at the top, use the search bar and filters. Manage ...

history herstory -

From Middle English, from Old French estoire, estorie (“chronicle, history, story”) (French histoire), from Latin historia, from Ancient Greek ἱστορία (historía, “learning through research, narration ...

### **Find your Google purchase history - Google Pay Help**

Find your Google purchase history You can get a list of your charges and transactions for Google purchases and subscriptions. Find transactions for Google products Go to ...

### Manage your Google Maps Timeline

Timeline helps you go back in time and remember where you’ve been by automatically saving your visits and routes to your Google Maps Timeline on each of your signed-in devices. You ...

### View or delete your YouTube search history - Google Help

You can manage your search history by deleting individual searches or clearing or pausing search history. Learn more about your data in YouTube and managing your YouTube activity.

### *Update billing and payments for YouTube TV*

If you signed up for YouTube TV through a mobile carrier or internet provider, you’ll be billed by them. Learn more about how integrated billing works. To review your payment history, follow ...

### *Find & manage your recent chats in Gemini Apps*

On your computer, go to gemini.google.com. If your chats are hidden, at the top, click Menu . On the side panel, find your pinned and recent chats.

edge........

History ..... WebAssistDatabase .....db .....  
Navicat ..... ...

Explore the history of seizures and their classification in ICD-10. Understand the coding process and its implications for healthcare. Learn more today!

[Back to Home](#)