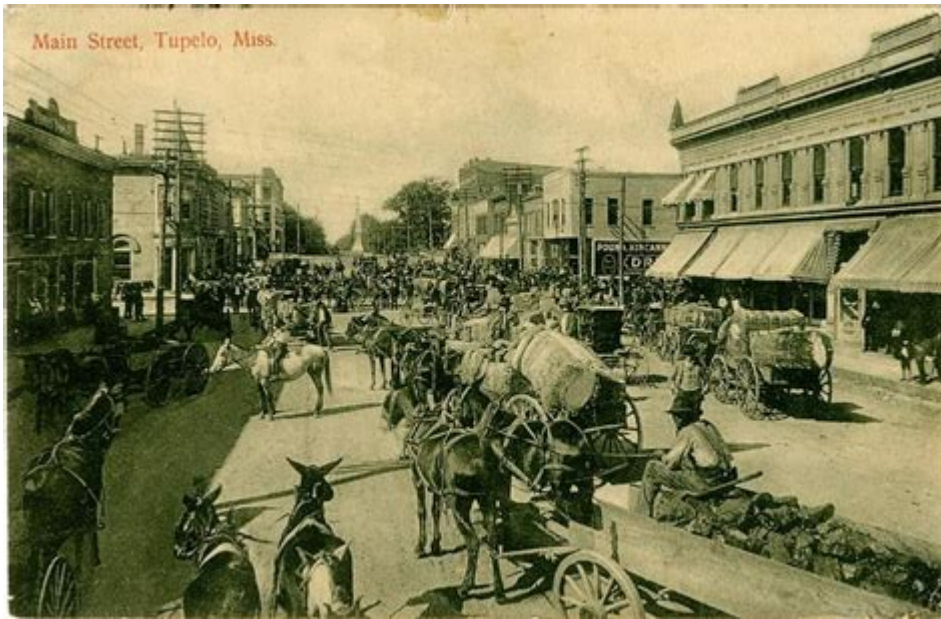


History Of Tupelo Ms



The history of Tupelo, MS is a rich tapestry woven from the threads of Native American heritage, early settlement, economic development, and cultural milestones. This vibrant city, located in the northeastern part of Mississippi, has a unique story that reflects the broader historical narratives of the American South.

Early History and Native American Heritage

Tupelo's history dates back thousands of years, long before European settlers arrived. The area was originally inhabited by Native American tribes, primarily the Chickasaw. These indigenous people were known for their agricultural practices, hunting, and trading networks that extended throughout the region.

- Chickasaw Nation: The Chickasaw were known for their strong warrior culture and strategic alliances with European powers. They played a crucial role in the early history of Mississippi and were instrumental in resisting colonial encroachment.
- Cultural Practices: The Chickasaw engaged in sophisticated agriculture, cultivating crops such as corn, beans, and squash, which became staples in their diet.

With the arrival of European settlers in the 18th century, the dynamics of the region began to change dramatically.

Colonial and Post-Colonial Era

The late 18th century marked the beginning of significant European influence in the area. The first settlers were primarily from the southern states, attracted by the fertile land and abundant natural

resources.

- **Founding of Tupelo:** Tupelo was officially founded in 1848 when the railroad was built, making it a key transit point for goods and people. The name "Tupelo" is derived from the native tupelo tree, which is abundant in the region.
- **Growth as a Transportation Hub:** The establishment of the railroad transformed Tupelo into a bustling transportation hub, facilitating trade and commerce. This growth attracted more settlers and businesses, leading to the town's incorporation in 1870.

Economic Development

Throughout the late 19th and early 20th centuries, Tupelo's economy prospered, fueled by agriculture and industry.

1. **Agricultural Backbone:** The fertile soil surrounding Tupelo allowed for extensive cotton farming, which became a cornerstone of the local economy. Cotton production dominated the landscape, leading to the establishment of gins and related businesses.
2. **Industrial Growth:** By the early 20th century, Tupelo saw the rise of various industries, including furniture manufacturing and textiles. The city became known for its high-quality furniture, which was shipped across the nation.

The Era of the Great Depression

The Great Depression in the 1930s brought significant challenges to Tupelo, as it did to many American towns. However, this period also fostered resilience and innovation.

- **Impact on the Economy:** Many residents faced unemployment and financial hardship. The local government, along with federal programs, sought to alleviate these challenges through public works projects and job creation initiatives.
- **Community Spirit:** Despite economic struggles, the community banded together, providing mutual support and assistance to those in need. This collaborative spirit became a defining characteristic of Tupelo's identity.

World War II and Post-War Growth

World War II marked a turning point for Tupelo, as the war effort led to an influx of jobs and population growth.

- **Military Presence:** The establishment of military training facilities nearby created job opportunities and attracted workers from across the country.
- **Post-War Boom:** After the war, Tupelo experienced a population surge, leading to rapid development. New homes, schools, and businesses sprang up to accommodate the growing community.

Cultural Development and Historical Significance

Tupelo's cultural landscape is rich and diverse, influenced by its historical roots and the convergence of various communities.

- Music Heritage: Tupelo is famously known as the birthplace of Elvis Presley, the King of Rock and Roll. His legacy has become a significant part of the city's identity, with numerous festivals and events celebrating his life and music.
- Cultural Institutions: The Elvis Presley Birthplace and Museum, established in 1990, attracts thousands of visitors each year, contributing to the local economy and cultural pride.

Modern Era

In recent decades, Tupelo has continued to evolve while preserving its historical heritage. The city has embraced modernization while maintaining a strong connection to its past.

- Economic Diversification: Today, Tupelo's economy is more diversified, with industries such as healthcare, education, and manufacturing playing significant roles alongside traditional sectors like agriculture.
- Growth and Development: The city has seen infrastructure improvements, including new roads, schools, and recreational facilities, enhancing the quality of life for its residents.

Challenges and Resilience

Like many cities, Tupelo has faced challenges, including economic downturns and natural disasters. However, the community's resilience has shone through.

- Tornado of 1936: A devastating tornado struck Tupelo in 1936, causing widespread destruction. The community came together to rebuild, demonstrating a strong spirit of cooperation and solidarity.
- Continuous Improvement: More recently, local leaders have focused on promoting sustainable development and preserving the city's historical sites while embracing new growth opportunities.

Conclusion

The history of Tupelo, MS, is a testament to the strength and resilience of its people. From its Native American roots to its status as a cultural landmark, Tupelo's journey reflects broader themes of growth, change, and community spirit. As the city moves forward, it continues to honor its past while embracing the future, making it a unique place in the heart of Mississippi. Through its rich history, Tupelo stands as a reminder of the enduring legacy of its inhabitants and the ongoing evolution of American towns.

Frequently Asked Questions

What year was Tupelo, Mississippi founded?

Tupelo was founded in 1848.

What is Tupelo, Mississippi famously known for?

Tupelo is famously known as the birthplace of Elvis Presley.

What major event in Tupelo's history occurred in 1936?

In 1936, Tupelo was devastated by a deadly tornado that killed 216 people.

What historical site in Tupelo commemorates Elvis Presley?

The Elvis Presley Birthplace and Museum commemorates his early life and contributions.

How did Tupelo's economy develop in the late 19th century?

Tupelo's economy developed through the lumber industry, taking advantage of the abundant timber resources.

What role did Tupelo play during the Civil War?

During the Civil War, Tupelo was a strategic point for both Confederate and Union forces, leading to several skirmishes in the area.

When was Tupelo incorporated as a city?

Tupelo was incorporated as a city in 1888.

What is the significance of the Tupelo Buffalo Park and Zoo?

It is significant as a regional attraction that showcases wildlife and promotes conservation efforts.

What notable military base is located near Tupelo?

The nearby Tupelo Army Air Field, established during World War II, is notable for training fighter pilots.

Which famous music festival is held annually in Tupelo?

The Tupelo Elvis Festival is held annually to celebrate the life and legacy of Elvis Presley.

Find other PDF article:

<https://soc.up.edu.ph/46-rule/Book?ID=AMp88-1273&title=personal-finance-activity-sheet-answers-chapter-8.pdf>

History Of Tupelo Ms

Check or delete your Chrome browsing history

Your History lists the pages you've visited on Chrome in the last 90 days. It doesn't store: If you're signed in to Chrome and sync your history, then your History also shows pages you've visited ...

Delete your activity - Computer - Google Account Help

Delete your activity automatically You can automatically delete some of the activity in your Google Account. On your computer, go to your Google Account. At the left, click Data & privacy. ...

Access & control activity in your account - Google Help

Under "History settings," click My Activity. To access your activity: Browse your activity, organized by day and time. To find specific activity, at the top, use the search bar and filters. Manage ...

history herstory -

From Middle English, from Old French estoire, estorie ("chronicle, history, story") (French histoire), from Latin historia, from Ancient Greek ἱστορία (historía, "learning through research, narration ...

Find your Google purchase history - Google Pay Help

Find your Google purchase history You can get a list of your charges and transactions for Google purchases and subscriptions. Find transactions for Google products Go to ...

Manage your Google Maps Timeline

Timeline helps you go back in time and remember where you've been by automatically saving your visits and routes to your Google Maps Timeline on each of your signed-in devices. You ...

View or delete your YouTube search history - Google Help

You can manage your search history by deleting individual searches or clearing or pausing search history. Learn more about your data in YouTube and managing your YouTube activity.

Update billing and payments for YouTube TV

If you signed up for YouTube TV through a mobile carrier or internet provider, you'll be billed by them. Learn more about how integrated billing works. To review your payment history, follow ...

Find & manage your recent chats in Gemini Apps

On your computer, go to gemini.google.com. If your chats are hidden, at the top, click Menu . On the side panel, find your pinned and recent chats.

edge ...

History WebAssistDatabase db Navicat ...

Check or delete your Chrome browsing history

Your History lists the pages you've visited on Chrome in the last 90 days. It doesn't store: If you're signed in to Chrome and sync your ...

Delete your activity - Computer - Google Account Help

Delete your activity automatically You can automatically delete some of the activity in your Google Account. On your computer, go ...

[Access & control activity in your account - Google Help](#)

Under "History settings," click My Activity. To access your activity: Browse your activity, organized by day and time. To find specific ...

history **herstory** -

From Middle English, from Old French estoire, estorie (“chronicle, history, story”) (French histoire), from Latin historia, from Ancient ...

Find your Google purchase history - Google Pay Help

Find your Google purchase history You can get a list of your charges and transactions for Google purchases and subscriptions. Find ...

Explore the rich history of Tupelo

[Back to Home](#)