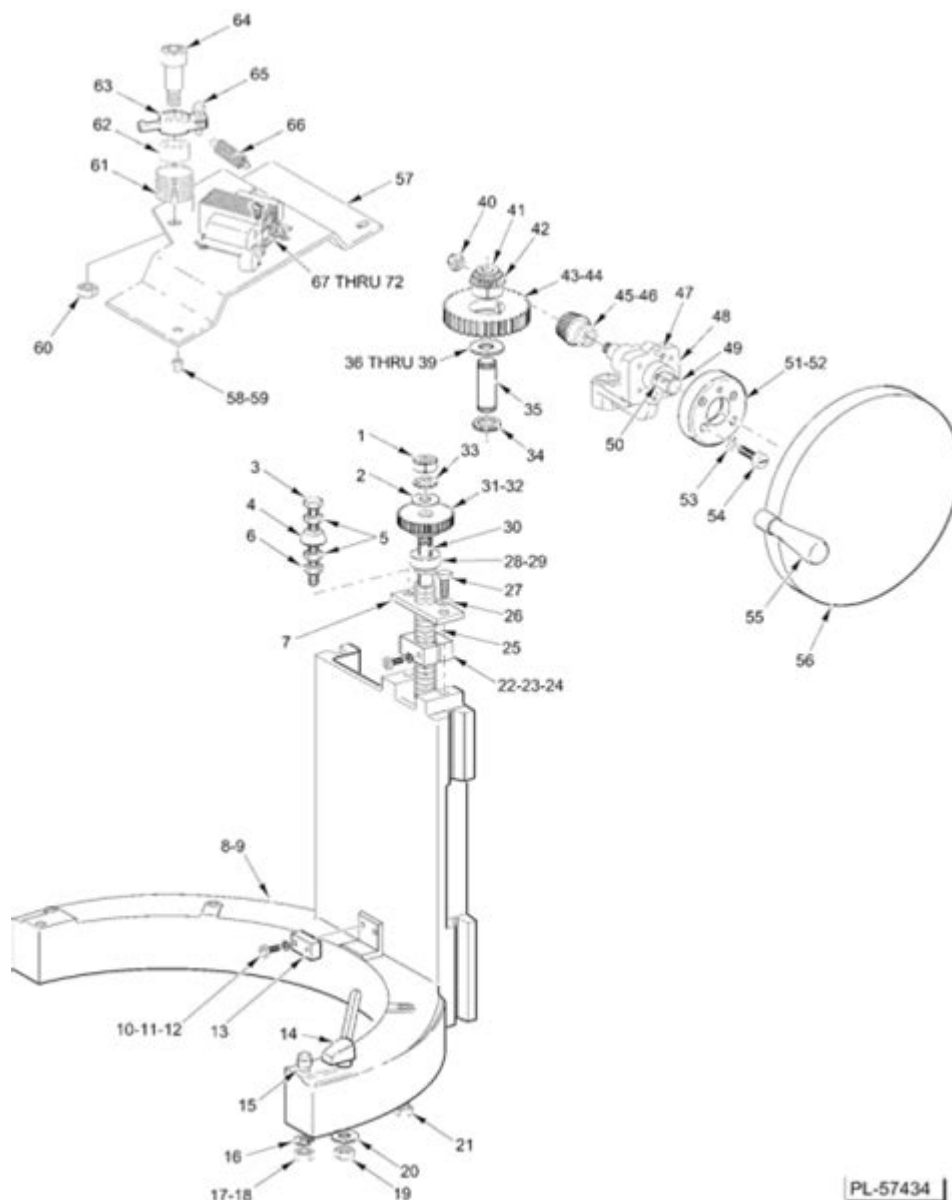


Hobart Mixer H600 Parts Diagram



Understanding the Hobart Mixer H600 Parts Diagram

The **Hobart Mixer H600 parts diagram** is an essential tool for anyone who operates or maintains this commercial kitchen appliance. Hobart has established itself as a leader in manufacturing heavy-duty mixers, and the H600 model is no exception. This mixer is designed to handle large batches of dough and other mixing tasks, making it a staple in bakeries, restaurants, and other food service establishments. Understanding the parts diagram helps operators and technicians identify components, troubleshoot issues, and perform maintenance efficiently.

Overview of the Hobart H600 Mixer

The Hobart H600 is a 60-quart capacity mixer that features powerful mixing capabilities, making it ideal for various applications, including baking, whipping, and blending. Its robust construction ensures longevity, and the mixer is equipped with several attachments that enhance its versatility. Here are some key features of the H600:

- 60-quart mixing bowl
- Variable speed control
- Heavy-duty motor
- Durable stainless steel design
- Multiple attachment options

Importance of the Parts Diagram

The parts diagram for the Hobart H600 mixer serves several critical functions:

1. **Identification of Components:** The diagram allows users to identify all parts of the mixer, from the mixing bowl to the motor and drive assembly.
2. **Maintenance and Repairs:** Understanding which parts need regular maintenance or may require replacement can prolong the lifespan of the mixer.
3. **Troubleshooting:** When issues arise, the diagram helps pinpoint potential problem areas, facilitating faster repairs.
4. **Ordering Replacement Parts:** When parts need to be replaced, the diagram provides the necessary information to order the correct components.

Key Components of the Hobart H600 Parts Diagram

The parts diagram for the Hobart H600 mixer includes various components, each playing a unique role in the mixer's operation. Here's a breakdown of some of the key components:

1. Mixing Bowl

The mixing bowl is the heart of the H600 mixer. It is designed to hold large quantities of ingredients and is made from durable stainless steel. The bowl's size allows for efficient mixing and reduces the need for multiple batches.

2. Mixer Head

The mixer head houses the motor and other essential components. This part is crucial for the mixer's performance, affecting mixing speed and efficiency.

3. Beater and Attachments

The H600 mixer supports various attachments, including:

- Flat beater
- Wire whip
- Dough hook

Each attachment serves a specific purpose, allowing for versatility in mixing different types of ingredients.

4. Gearbox

The gearbox connects the motor to the mixer's drive system. It regulates the speed and torque of the mixing action, ensuring consistent results regardless of the batch size.

5. Drive Assembly

The drive assembly transmits power from the motor to the mixing attachments. This component is vital for the efficient operation of the mixer and requires regular inspection for wear and tear.

6. Control Panel

The control panel allows the operator to adjust the speed settings and monitor the mixer's

operation. It is designed for ease of use and should be kept clean and functional for optimal performance.

7. Legs and Base

The legs and base provide stability to the mixer. They are designed to absorb vibrations and prevent the mixer from moving during operation.

Maintenance Tips for the Hobart H600 Mixer

To ensure the Hobart H600 mixer operates efficiently and lasts for many years, regular maintenance is essential. Here are some maintenance tips:

1. **Regular Cleaning:** Clean the mixing bowl and attachments after each use to prevent residue buildup.
2. **Inspect the Gearbox:** Check the gearbox for any signs of oil leaks or unusual noises, which may indicate wear and require attention.
3. **Tighten Connections:** Periodically check all screws and connections to ensure they are tight and secure.
4. **Lubricate Moving Parts:** Follow the manufacturer's guidelines for lubricating components to minimize friction and wear.
5. **Monitor Performance:** Pay attention to the mixer's performance; any unusual sounds or vibrations may indicate an underlying issue.

Troubleshooting Common Issues

The Hobart H600 mixer, like any commercial equipment, may experience issues over time. Here are some common problems and their potential solutions:

1. Mixer Won't Start

If the mixer fails to start, check the following:

- Ensure it is plugged in and the power outlet is functioning.

- Inspect the circuit breaker for tripped switches.
- Check the control panel for any error messages.

2. Unusual Noises

Unusual noises can indicate mechanical issues. Investigate by:

- Listening for grinding or rattling sounds.
- Inspecting the gearbox and drive assembly for damage.
- Ensuring all components are securely attached.

3. Inconsistent Mixing

If the mixer does not mix ingredients evenly, consider:

- Checking the attachment for wear or damage.
- Ensuring the bowl is properly positioned and secured.
- Evaluating the speed settings for the specific mixing task.

Conclusion

Understanding the **Hobart Mixer H600 parts diagram** is vital for anyone involved in the operation, maintenance, and repair of this powerful kitchen appliance. By familiarizing oneself with the key components, operators can ensure efficient mixing, troubleshoot issues effectively, and perform regular maintenance to extend the mixer's lifespan. Whether you are a seasoned professional or new to using commercial mixers, having a solid understanding of the H600's parts and their functions will significantly enhance your experience in the kitchen.

Frequently Asked Questions

What is the purpose of the Hobart H600 mixer parts diagram?

The Hobart H600 mixer parts diagram provides a detailed visual representation of all the components and parts of the mixer, helping users identify specific parts for maintenance, repair, or replacement.

Where can I find the Hobart H600 mixer parts diagram?

The parts diagram for the Hobart H600 mixer can typically be found on the official Hobart website, in the user manual, or through authorized Hobart service providers and parts suppliers.

What are some common parts included in the Hobart H600 mixer parts diagram?

Common parts included in the Hobart H600 mixer parts diagram are the motor, bowl, beaters, planetary gear assembly, and various seals and gaskets.

How can I use the Hobart H600 mixer parts diagram for troubleshooting?

You can use the parts diagram to locate specific components that may be malfunctioning, allowing you to diagnose issues accurately and determine which parts need to be repaired or replaced.

Is it necessary to refer to the parts diagram when replacing Hobart H600 mixer parts?

Yes, referring to the parts diagram is essential when replacing parts, as it ensures you select the correct components and understand how they fit together during reassembly.

Find other PDF article:

<https://soc.up.edu.ph/48-shade/pdf?ID=Kjv62-3010&title=practice-with-taxonomy-and-classification.pdf>

[Hobart Mixer H600 Parts Diagram](#)

Hobart Canada - Premier Foodservice Equipment

Hobart Canada provides a complete line of equipment for the foodservice industry including baking, cooking, food machines, warewashers, refrigeration and ventilation.

Hobart - Wikipedia

Founded in 1804 as a British penal colony, [17] Hobart is Australia's second-oldest capital city after Sydney, New South Wales. Whaling quickly emerged as a major industry in the area, and ...

Premier Foodservice Equipment | Hobart

Hobart's heavy duty slicers provide consistent and precision slicing - every single time. From your department manager to operations and into the hands of your customer, Hobart's weigh wrap ...

Hobart - Must See Attractions & Things To Do

Hobart is Tasmania's lively capital that retains an old town salty-air feel; where you can have early morning sand between your toes, wander city streets, eat world class food, head to a ...

Travel Guide to Hobart, Tasmania - Tourism Australia

5 days ago · Explore our guide to Hobart, Tasmania. Dine at the freshest restaurants and discover modern art, rich history and unsurpassed natural setting. Tasmania's capital has it all.

Home - Hobart City

Nestled on the stunning Derwent River, Hobart, the capital of Tasmania, is a city that charms with its blend of natural beauty and historic significance. It sits in the shadow of Mount Wellington, ...

25 Best Things to Do in Hobart (Australia) - The Crazy Tourist

Jan 23, 2022 · Many of Hobart's big attractions are right here, accompanied by cafes and art galleries. You won't have to search long for restaurant with ultra-fresh fish and seafood, from ...

Hobart - Wikitravel

Dec 12, 2024 · Founded in 1804 by Colonel David Collins, Hobart is the second oldest city in Australia. It grew out of the penal settlement on the island at Risdon Cove, eight kilometres up ...

What to do in Hobart - Tasmania Explorer

Explore Tasmania's capital, Hobart and surrounds with this comprehensive guide on what to do in Hobart, including top attractions, places to stay and more.

Service - Hobart Canada

If you require service over a broad geographic area, Hobart is your single point of contact. We coordinate the service calls for you through our national computer network.

Hobart Canada - Premier Foodservice Equipment

Hobart Canada provides a complete line of equipment for the foodservice industry including baking, cooking, food machines, warewashers, refrigeration and ventilation.

Hobart - Wikipedia

Founded in 1804 as a British penal colony, [17] Hobart is Australia's second-oldest capital city after Sydney, New South Wales. Whaling quickly emerged as a major industry in the area, and ...

Premier Foodservice Equipment | Hobart

Hobart's heavy duty slicers provide consistent and precision slicing - every single time. From your department manager to operations and into the hands of your customer, Hobart's weigh wrap ...

Hobart - Must See Attractions & Things To Do

Hobart is Tasmania's lively capital that retains an old town salty-air feel; where you can have early morning sand between your toes, wander city streets, eat world class food, head to a ...

Travel Guide to Hobart, Tasmania - Tourism Australia

5 days ago · Explore our guide to Hobart, Tasmania. Dine at the freshest restaurants and discover modern art, rich history and unsurpassed natural setting. Tasmania's capital has it all.

Home - Hobart City

Nestled on the stunning Derwent River, Hobart, the capital of Tasmania, is a city that charms with its blend of natural beauty and historic significance. It sits in the shadow of Mount Wellington, ...

25 Best Things to Do in Hobart (Australia) - The Crazy Tourist

Jan 23, 2022 · Many of Hobart's big attractions are right here, accompanied by cafes and art galleries. You won't have to search long for restaurant with ultra-fresh fish and seafood, from ...

Hobart - Wikitravel

Dec 12, 2024 · Founded in 1804 by Colonel David Collins, Hobart is the second oldest city in Australia. It grew out of the penal settlement on the island at Risdon Cove, eight kilometres up ...

What to do in Hobart - Tasmania Explorer

Explore Tasmania's capital, Hobart and surrounds with this comprehensive guide on what to do in Hobart, including top attractions, places to stay and more.

Service - Hobart Canada

If you require service over a broad geographic area, Hobart is your single point of contact. We coordinate the service calls for you through our national computer network.

Explore our detailed Hobart mixer H600 parts diagram to easily identify components and streamline your repairs. Learn more and keep your mixer running smoothly!

[Back to Home](#)