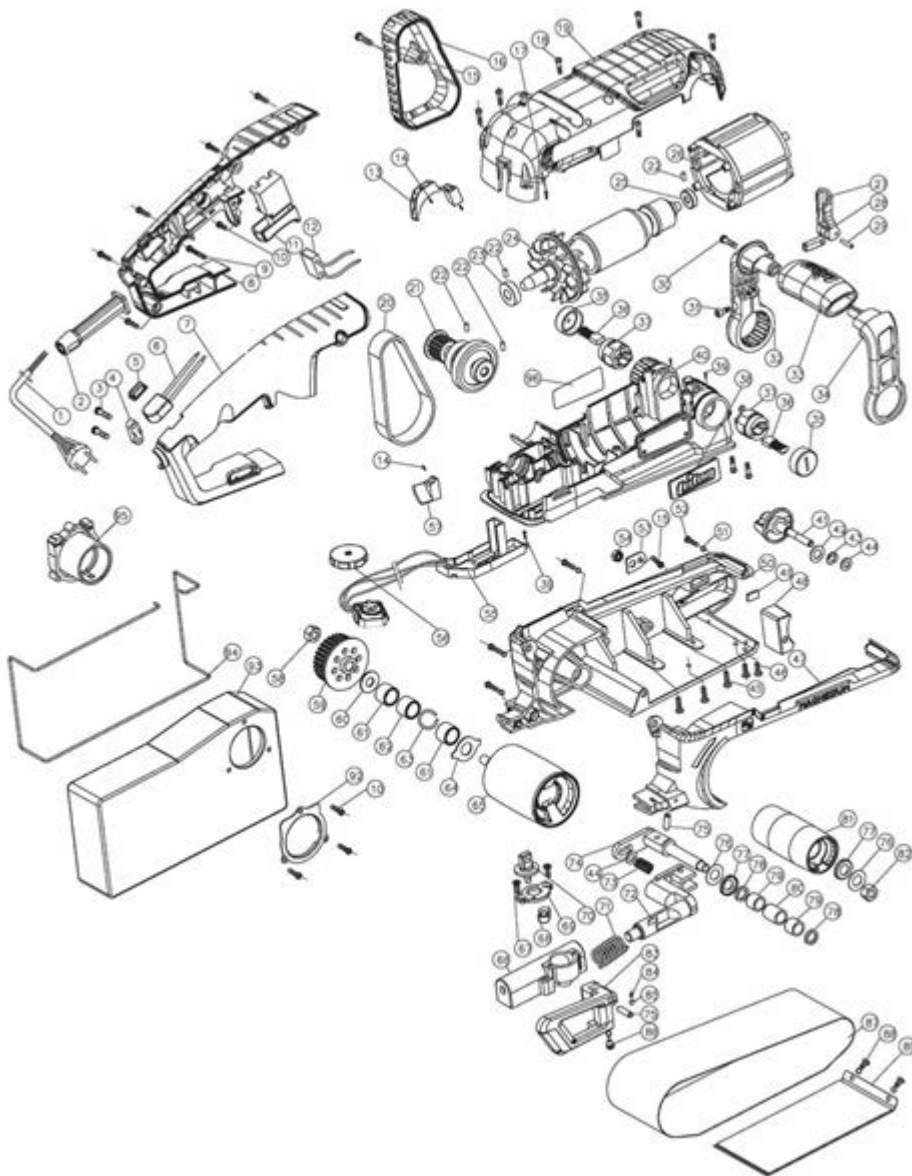


# Hilti Dsh 700 X Parts Diagram



## Hilti DSH 700 X Parts Diagram

The Hilti DSH 700 X is a powerful gasoline-powered cut-off saw used for cutting various materials, including concrete, asphalt, and metal. Its robust design and high-performance capabilities make it a preferred choice for professionals in construction and demolition. Understanding the parts and components of the Hilti DSH 700 X is crucial for maintenance, repairs, and efficient operation. In this article, we will explore the parts diagram of the Hilti DSH 700 X, breaking down its components and providing insights into their functions and maintenance tips.

# Overview of the Hilti DSH 700 X

The Hilti DSH 700 X is designed to deliver high cutting performance while maintaining user comfort and safety. With a powerful engine and advanced technology, this saw is capable of handling tough materials with precision. The saw's design focuses on reducing vibrations and improving maneuverability, making it easier for operators to work in various conditions.

## Benefits of Understanding the Parts Diagram

Having a clear understanding of the parts diagram of the Hilti DSH 700 X offers several advantages:

1. **Maintenance:** Knowing the components helps in regular maintenance, ensuring the saw operates efficiently.
2. **Troubleshooting:** Identifying parts makes it easier to troubleshoot any issues that may arise during operation.
3. **Repairs:** Understanding the layout and function of each part can simplify the repair process.
4. **Safety:** Familiarity with the components can enhance safety by ensuring proper usage and handling.

## Key Components of the Hilti DSH 700 X

The Hilti DSH 700 X is composed of several critical parts, each serving a unique function. Below is a breakdown of these components:

### 1. Engine Assembly

The engine assembly is the heart of the Hilti DSH 700 X, providing the power necessary for cutting. Key parts include:

- **Cylinder:** Contains the piston and combustion chamber.
- **Piston:** Moves up and down to create the necessary compression for combustion.
- **Crankshaft:** Converts the linear motion of the piston into rotational motion.
- **Ignition System:** Ensures the engine starts and runs efficiently.

## 2. Cutting Blade

The cutting blade is essential for the saw's operation. It comes in various sizes and types, depending on the material being cut. Important aspects include:

- Diameter: Commonly 14 inches for the DSH 700 X.
- Material: Diamond blades for concrete, abrasive blades for metal, etc.
- Arbor Size: The hole in the center of the blade that fits onto the saw's spindle.

## 3. Fuel System

The fuel system is crucial for the saw's operation. It includes:

- Fuel Tank: Holds the gasoline required for the engine.
- Fuel Filter: Prevents contaminants from entering the engine.
- Carburetor: Mixes the fuel and air for optimal combustion.

## 4. Cooling System

To prevent overheating, the Hilti DSH 700 X incorporates a cooling system that includes:

- Cooling Fan: Circulates air around the engine.
- Cooling Fins: Help dissipate heat from the engine.

## 5. Handle and Frame

The handle and frame provide structure and support to the saw. Key components are:

- Main Handle: For steering and controlling the saw.
- Secondary Handle: Provides additional grip and stability.
- Frame: The base structure that houses the engine and other components.

## 6. Safety Features

Safety is paramount when operating power tools. The Hilti DSH 700 X includes several safety features:

- Throttle Lock: Prevents accidental acceleration.
- Blade Guard: Protects the user from debris and accidental contact with the

blade.

- Vibration Dampening: Reduces operator fatigue and enhances comfort.

## **Parts Diagram Breakdown**

Understanding the parts diagram is essential for effective maintenance and repair. The diagram typically categorizes parts into various sections based on their function. Below is a general breakdown of how the parts are organized:

### **1. Engine Section**

This section includes all components related to the engine, such as:

- Cylinder assembly
- Piston and rings
- Crankshaft and bearings
- Ignition coil and spark plug

### **2. Cutting Section**

The cutting section focuses on parts related to the blade and its operation, including:

- Cutting blade
- Blade guard
- Arbor and spindle
- Blade adjustment mechanism

### **3. Fuel and Electrical Section**

This section covers components involved in fuel delivery and electrical systems:

- Fuel tank and cap
- Fuel lines and filter
- Carburetor
- Wiring harness and switches

### **4. Cooling and Exhaust Section**

Parts in this section ensure that the engine remains cool and exhaust is managed properly:

- Cooling fan
- Cooling fins
- Exhaust manifold
- Muffler

## **5. Handle and Frame Section**

This section includes parts that make up the frame and support structure:

- Main and secondary handles
- Frame assembly
- Vibration dampeners
- Mounting brackets

## **Maintenance Tips for the Hilti DSH 700 X**

To ensure the longevity and efficiency of the Hilti DSH 700 X, follow these maintenance tips:

1. Regular Inspection: Check all parts for wear and damage before use.
2. Clean Fuel System: Regularly clean the fuel filter and carburetor to prevent clogs.
3. Blade Maintenance: Sharpen or replace the cutting blade as needed to ensure effective cutting.
4. Cooling System Check: Ensure the cooling fan and fins are clean and functioning properly.
5. Lubrication: Regularly lubricate moving parts to reduce friction and wear.

## **Troubleshooting Common Issues**

Understanding the parts diagram can greatly assist in troubleshooting common issues with the Hilti DSH 700 X:

- Engine Won't Start:
  - Check the fuel level and ensure it's fresh.
  - Inspect the spark plug for wear or damage.
  - Verify that the ignition system is functioning.
- Poor Cutting Performance:
  - Ensure the blade is sharp and appropriate for the material.
  - Check for any obstructions in the cutting path.
  - Inspect the engine's power output and adjust carburetor settings if

necessary.

- Overheating:
- Check the cooling fan for proper operation.
- Ensure that the cooling fins are clean and free of debris.
- Verify that the fuel mixture is correct.

## **Conclusion**

Understanding the parts diagram of the Hilti DSH 700 X is essential for anyone looking to maintain, repair, or operate this powerful cut-off saw effectively. By familiarizing oneself with the various components, users can ensure efficient operation and prolong the life of their equipment. Regular maintenance, proper troubleshooting, and adherence to safety practices will enhance performance and provide a safer working environment. Whether you are a seasoned professional or a novice user, knowing the intricacies of the Hilti DSH 700 X will undoubtedly contribute to successful project outcomes.

## **Frequently Asked Questions**

### **What is the purpose of the Hilti DSH 700 X parts diagram?**

The parts diagram helps users identify and locate various components of the Hilti DSH 700 X, facilitating repairs and maintenance.

### **Where can I find the official parts diagram for the Hilti DSH 700 X?**

The official parts diagram can typically be found on the Hilti website under product support or in the user manual provided with the saw.

### **How do I interpret the parts diagram for the Hilti DSH 700 X?**

Each component is labeled with a part number, and the diagram usually includes a key or legend explaining the layout and function of each part.

### **Are replacement parts for the Hilti DSH 700 X readily available?**

Yes, replacement parts can be purchased directly from Hilti or authorized distributors, often listed alongside the parts diagram.

## **What should I do if I can't find a specific part in the DSH 700 X parts diagram?**

If a specific part is missing, contact Hilti customer service for assistance, or check with a local authorized service provider.

## **Can I use the parts diagram for maintenance of the Hilti DSH 700 X?**

Yes, the parts diagram is a valuable tool for planning maintenance tasks, helping you to understand which components may need service or replacement.

## **Is there a digital version of the Hilti DSH 700 X parts diagram?**

Yes, Hilti often provides a digital version of the parts diagram on their website, accessible through product support sections.

## **How often should I refer to the parts diagram for the Hilti DSH 700 X?**

It's advisable to refer to the parts diagram whenever you're performing maintenance, troubleshooting issues, or ordering replacement parts.

Find other PDF article:

<https://soc.up.edu.ph/39-point/pdf?trackid=ogJ46-4208&title=masters-in-mechatronics-engineering-in-usa.pdf>

## **Hilti Dsh 700 X Parts Diagram**

### **Hilti's Website - Hilti Canada**

With hilti.ca you can buy all your Hilti products online 24/7, whether you're in the office or onsite – all from your phone, computer or tablet.

### **Hilti Store Vancouver & Distribution Center (Cashless)**

Hilti has power tools, grinders, drills, and saws as well as fasteners, anchors, design and layout software and services for construction professionals

### *Hilti - Power Tools, Fasteners and Software for Construction*

Hilti offers a range of products and solutions for construction professionals, from cordless tools and anchors to engineering software and services.

### **Fasteners - Hilti Canada**

See how your daily applications and your most critical engineering challenges can be served by our

fasteners – such as chemical anchors, mechanical anchors, cast-in, insulation fasteners, ...

#### *Sales Channels - Hilti Canada*

Hilti's Website Get the job done faster on Hilti's website with online ordering and support built around your needs. Learn more

#### **Hilti Store Mississauga & Distribution Center (Cashless)**

Hilti has power tools, grinders, drills, and saws as well as fasteners, anchors, design and layout software and services for construction professionals

#### *Products - Hilti Canada*

Follow Hilti Products Power tools Software Dust and water management Tool inserts Measuring tools & scanners Fasteners Firestop & fire protection Modular support systems Facade ...

#### Authorized Distributors and Rental Locations - Hilti Canada

Hilti Stores Convenient locations provide on-hand inventory, expert technical advice, product training, minor repairs and diagnostic services. Learn more about Hilti Stores

#### **Firestop & fire protection - Hilti Canada**

Over 30 years of experience in providing internationally approved and tested firestop systems, premium software and support to save lives and buildings from fire

#### Products - Hilti Canada

Outils, technologies et logiciels pour l'industrie de la construction - nos produits s'intègrent parfaitement afin que vous puissiez les utiliser tout au long de votre conception, installation et ...

#### **Hilti's Website - Hilti Canada**

With hilti.ca you can buy all your Hilti products online 24/7, whether you're in the office or onsite – all from your phone, ...

#### **Hilti Store Vancouver & Distribution Center (Cashless)**

Hilti has power tools, grinders, drills, and saws as well as fasteners, anchors, design and layout software and services for construction professionals

#### Hilti - Power Tools, Fasteners and Software for Construction

Hilti offers a range of products and solutions for construction professionals, from cordless tools and anchors to ...

#### *Fasteners - Hilti Canada*

See how your daily applications and your most critical engineering challenges can be served by our fasteners – such as chemical anchors, mechanical anchors, ...

#### **Sales Channels - Hilti Canada**

Hilti's Website Get the job done faster on Hilti's website with online ordering and support built around your needs. Learn more

Explore our detailed Hilti DSH 700 X parts diagram to understand each component's role. Learn more to ensure optimal performance and maintenance of your tool!



[Back to Home](#)