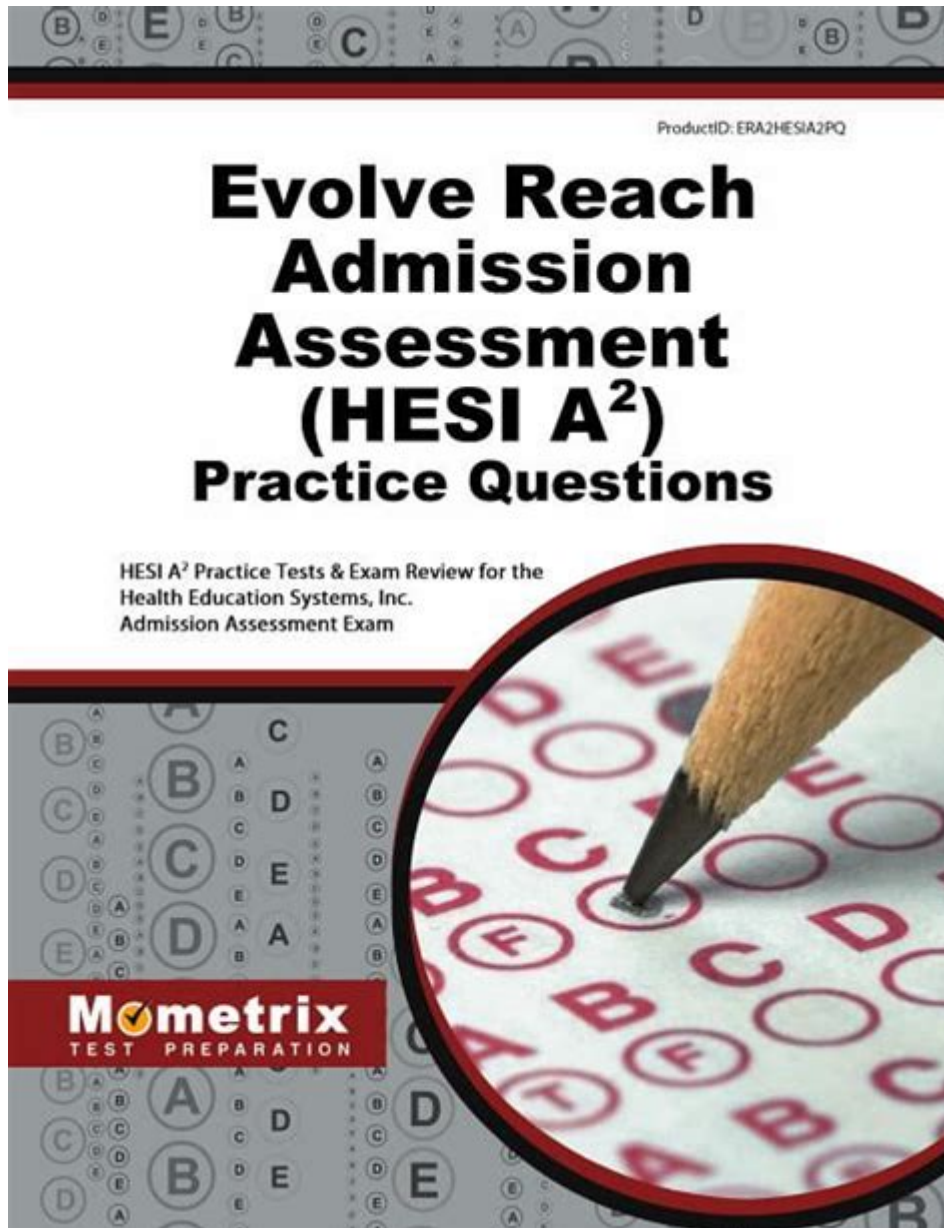


Hesi Evolve Reach Admission Assessment Test



Understanding the HESI Evolve Reach Admission Assessment Test

The **HESI Evolve Reach Admission Assessment Test** is a critical component for nursing schools across the United States. This standardized test is designed to evaluate a prospective nursing student's readiness for nursing school by assessing their knowledge and skills in various areas essential for success in the field. This article delves into the purpose, structure, preparation strategies, and the significance of the HESI Evolve Reach Admission Assessment Test for aspiring nursing students.

Purpose of the HESI Evolve Reach Admission Assessment Test

The HESI Evolve Reach Admission Assessment Test serves multiple purposes, playing a key role in both admissions and academic success. Here are some of its primary functions:

- **Assessment of Basic Skills:** The test evaluates fundamental skills in areas such as reading, mathematics, and science.
- **Predictive Validity:** It helps predict a candidate's success in nursing programs based on their performance.
- **Standardized Evaluation:** The test provides a uniform measure for schools to assess applicants, ensuring fairness in the admissions process.
- **Feedback for Students:** Candidates receive feedback on their strengths and weaknesses, which can guide their study and preparation.

Structure of the HESI Evolve Reach Admission Assessment Test

Understanding the structure of the HESI Evolve Reach Assessment Test is crucial for effective preparation. The test is divided into several sections, each targeting specific competencies.

Test Sections

The assessment typically includes the following sections:

1. **Reading Comprehension:** This section tests the ability to understand and interpret written material, focusing on comprehension skills.
2. **Mathematics:** Candidates are required to solve basic mathematical problems, including dosage calculations and unit conversions.
3. **Science:** This section assesses knowledge in areas such as biology, chemistry, and anatomy, which are crucial for nursing.
4. **English Language:** This includes vocabulary and grammar questions, evaluating the candidate's proficiency in English.

Each section is designed to measure the foundational skills necessary for a successful nursing career. The total test duration can vary but typically lasts around 4 hours.

Scoring

The HESI Evolve Reach Admission Assessment Test is scored on a scale that reflects both the overall performance and performance in individual sections. Understanding the scoring system is essential for candidates as it helps them set realistic goals for their preparation.

- Overall Score: This score provides a general idea of readiness for nursing school.
- Section Scores: These scores help identify individual strengths and weaknesses, allowing targeted study.

Preparation Strategies for the HESI Evolve Reach Admission Assessment Test

Proper preparation is essential for achieving a high score on the HESI Evolve Reach Assessment Test. Here are some effective strategies:

1. Understand the Test Format

Familiarity with the test format can significantly reduce anxiety on test day. Review sample questions and practice tests to get a feel for the types of questions that will be asked.

2. Create a Study Schedule

Organizing study time effectively can make a huge difference in preparation. Consider the following tips:

- Allocate specific times each day for studying.
- Break down subjects into manageable sections.
- Include regular breaks to avoid burnout.

3. Utilize Study Resources

There are numerous resources available to help students prepare for the HESI Evolve Reach Admission Assessment Test. Consider the following:

- **Official HESI Study Guides:** These guides provide an overview of the test and sample questions.
- **Online Practice Tests:** Websites offer practice tests that simulate the actual exam environment.
- **Study Groups:** Collaborating with peers can enhance learning through discussion and shared resources.

4. Focus on Weak Areas

After taking practice tests, identify areas needing improvement. Concentrate your efforts on these areas to maximize your score.

5. Take Care of Your Health

Physical and mental well-being is vital during the preparation phase. Ensure you:

- Get adequate sleep, especially before the test.
- Eat nutritious foods to fuel your brain.
- Engage in stress-relief activities, such as exercise or meditation.

The Significance of the HESI Evolve Reach Admission Assessment Test

The HESI Evolve Reach Admission Assessment Test holds significant weight in the nursing admission process for several reasons:

1. Admission Criteria

Many nursing programs use the HESI test as a critical part of their admissions criteria. A competitive score can enhance an applicant's chances of acceptance.

2. Academic Success

Research suggests that students who perform well on the HESI are more likely to succeed in nursing programs. The test assesses skills directly related to the nursing curriculum, making it a useful predictor of future performance.

3. Identifying Strengths and Weaknesses

The feedback provided after the HESI test allows students to identify their academic strengths and areas that require further development, guiding their study efforts.

4. Building Confidence

Successfully preparing for and completing the HESI test can build confidence in students as they embark on their nursing education. Knowing they have mastered the foundational skills can ease the transition into a rigorous nursing program.

Conclusion

The HESI Evolve Reach Admission Assessment Test is a pivotal step for aspiring nursing students. Understanding its purpose, structure, and preparation strategies can significantly enhance a candidate's potential for success. By approaching the test with a well-organized study plan and utilizing available resources, students can improve their performance and gain admission to their desired nursing programs. As the healthcare field continues to evolve, being equipped with the necessary knowledge and skills is more important than ever, making the HESI test a valuable tool in the journey to becoming a healthcare professional.

Frequently Asked Questions

What is the HESI Evolve Reach Admission Assessment Test?

The HESI Evolve Reach Admission Assessment Test is a standardized exam designed to evaluate the academic readiness of prospective nursing students. It assesses knowledge in areas such as math, reading comprehension, vocabulary, and general knowledge.

How is the HESI Evolve Reach test structured?

The HESI Evolve Reach test typically consists of multiple-choice questions divided into sections focusing on math, reading, vocabulary, and science. The exact structure may vary depending on the institution's requirements.

What subjects should I study for the HESI Evolve Reach Admission Assessment Test?

Students should focus on subjects such as mathematics (including basic algebra), reading comprehension, vocabulary, grammar, and science fundamentals (like biology and chemistry) to prepare effectively for the test.

How can I prepare for the HESI Evolve Reach test?

Preparation can involve using study guides, practice tests, online resources, and review courses specifically tailored for the HESI Evolve Reach test. Consistent practice and familiarization with the test format are also recommended.

What is a good score on the HESI Evolve Reach Admission Assessment Test?

While what constitutes a 'good' score can vary by nursing program, many institutions look for scores above 75%. It's important to check the specific requirements of the programs you are applying to.

How long is the HESI Evolve Reach test?

The HESI Evolve Reach Admission Assessment Test typically takes about 3 to 4 hours to complete, depending on the number of sections included in the exam.

Are there any resources available to retake the HESI Evolve Reach test?

Yes, many institutions allow students to retake the HESI Evolve Reach test after a waiting period. Additionally, there are numerous online resources, study guides, and tutoring services available to help prepare for a retake.

Find other PDF article:

<https://soc.up.edu.ph/12-quote/Book?ID=clh72-7098&title=charms-for-an-easy-life.pdf>

Hesi Evolve Reach Admission Assessment Test

APCI HESI

Sep 27, 2021 · APCI
...

APCI HESI

2022-8-16 14:33 APCI
...

APCI HESI

Sep 27, 2021 · APCI
... APCI HESI ,

APCI HESI

2022-8-16 14:33 APCI
...

Prepare for the HESI Evolve Reach Admission Assessment Test with our expert tips and strategies.
Discover how to boost your scores and succeed!

[Back to Home](#)