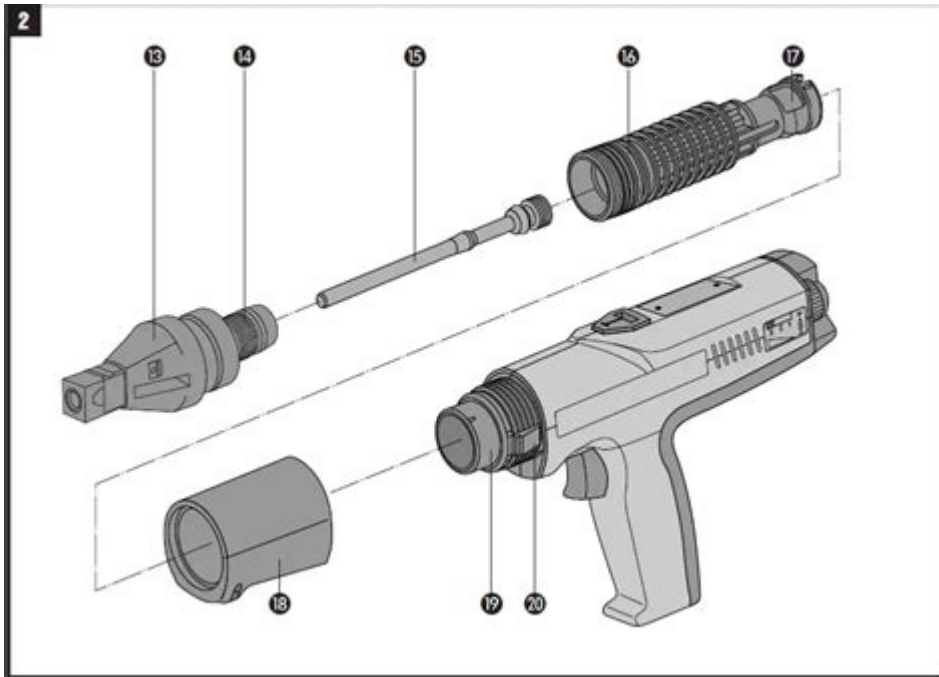


Hilti Dx 351 Parts Diagram



Hilti DX 351 parts diagram provides crucial information for users and technicians who want to understand the inner workings of this powerful direct fastening tool. The Hilti DX 351 is designed for heavy-duty applications, making it a popular choice among contractors and construction professionals. Understanding the parts and their functions not only aids in maintenance and repairs but also enhances operational efficiency. This article will explore the essential components of the Hilti DX 351, their functions, and how to interpret the parts diagram effectively.

Overview of the Hilti DX 351

The Hilti DX 351 is a powder-actuated tool (PAT) designed for fastening applications in concrete, steel, and masonry. It is known for its robustness and reliability, making it suitable for both indoor and outdoor use. The tool utilizes a cartridge system to drive fasteners, which allows for quick and efficient installations.

Key Features of the Hilti DX 351

- High Performance: Capable of driving fasteners into hard substrates with minimal effort.
- Versatile: Can be used for a variety of applications, including fastening metal tracks, electrical fixtures, and other structural components.
- User-Friendly Design: Ergonomically designed for comfort during extended use, reducing operator fatigue.
- Durability: Built with high-quality materials to withstand tough job site conditions.

Understanding the Parts Diagram

The Hilti DX 351 parts diagram serves as a visual reference to identify various components of the tool. It typically includes a labeled illustration of the tool, indicating each part's location and name. Understanding this diagram is essential for troubleshooting, maintenance, and repairs.

Components of the Parts Diagram

1. Trigger Mechanism

- Activates the tool.
- Controls the firing process.
- Made from durable plastic and metal components.

2. Cartridge Chamber

- Holds the powder cartridges.
- Designed for quick loading and unloading.
- Ensures proper alignment for optimal firing.

3. Fastener Guide

- Directs the fastener into the substrate.
- Available in different sizes to accommodate various fastener types.
- Adjustable for precision fastening.

4. Barrel

- Houses the fastener during firing.
- Constructed from high-strength steel for durability.
- Can be replaced if damaged.

5. Safety Mechanism

- Prevents accidental firing.
- Includes a safety lock that must be disengaged before use.
- Critical for user safety.

6. Handle

- Provides a comfortable grip for the user.
- May feature rubberized surfaces for enhanced control.
- Integral to the tool's ergonomic design.

7. Exhaust Port

- Releases gases produced during the firing process.
- Helps keep the work area clear of debris.
- Typically located at the rear of the tool.

8. Depth Adjustment Dial

- Allows the user to set the depth of the fastener.
- Ensures consistent fastening results.
- Essential for applications requiring precision.

9. Magazine

- Holds a series of fasteners for continuous operation.
- Can be adjusted to accommodate different fastener lengths.
- Designed for easy reloading.

10. Retaining Ring

- Secures various components in place.
- Prevents disassembly during operation.
- Made from durable materials to withstand impact.

Maintenance Tips for Hilti DX 351

Regular maintenance is essential for the longevity and performance of the Hilti DX 351. Following these tips can help ensure your tool remains in optimal condition:

Routine Cleaning

- After Each Use: Wipe down the exterior with a damp cloth to remove dust and debris.
- Internal Cleaning: Use a brush to clean the barrel and cartridge chamber periodically.
- Avoid Moisture: Ensure the tool is dry before storing it to prevent rust and corrosion.

Inspecting Components

- Check the Trigger Mechanism: Ensure it operates smoothly without sticking.
- Examine the Fastener Guide and Barrel: Look for signs of wear or damage.
- Safety Mechanism: Test the safety lock regularly to ensure it functions properly.

Lubrication

- Lubricate Moving Parts: Use a light machine oil to lubricate the trigger and any moving parts.
- Avoid Over-lubrication: Too much oil can attract dust and debris, causing malfunctions.

Common Issues and Troubleshooting

Understanding common issues related to the Hilti DX 351 can save time and effort during troubleshooting. Here are some problems users may encounter:

Misfires

- Causes:
- Incorrect cartridge loading.
- Worn-out trigger mechanism.
- Solutions:
- Review the loading procedure; ensure proper alignment.
- Replace the trigger if it shows signs of wear.

Difficulty in Firing

- Causes:
- Blocked cartridge chamber.
- Faulty safety mechanism.
- Solutions:
- Clean the cartridge chamber thoroughly.
- Inspect and repair or replace the safety mechanism.

Excessive Recoil

- Causes:
- Improper handling technique.
- Worn-out components.
- Solutions:
- Review handling practices; maintain a firm grip.
- Check components for wear and replace as necessary.

Ordering Replacement Parts

When parts need replacement, it's essential to choose the right components. Here's how to order replacement parts for the Hilti DX 351:

1. Refer to the Parts Diagram: Use the Hilti DX 351 parts diagram to identify the specific part number.
2. Visit Authorized Dealers: Purchase parts from authorized Hilti dealers or their official website to ensure compatibility and quality.
3. Keep Records: Maintain a log of parts replaced and their corresponding part numbers for future reference.

Conclusion

The Hilti DX 351 parts diagram is an invaluable resource for anyone who operates or maintains this powerful tool. Understanding the various components and their functions is crucial for effective troubleshooting and maintenance. Regular upkeep and awareness of common issues can significantly enhance the tool's longevity and performance. By following the tips outlined in this article, users can ensure their Hilti DX 351 remains a reliable partner in their construction endeavors. Whether you're a

seasoned professional or a novice, familiarizing yourself with the parts diagram will empower you to make informed decisions regarding the operation and maintenance of your tool.

Frequently Asked Questions

What is the purpose of the Hilti DX 351 parts diagram?

The Hilti DX 351 parts diagram provides a visual representation of the tool's components, helping users identify and understand the assembly and functionality of each part.

Where can I find a detailed parts diagram for the Hilti DX 351?

A detailed parts diagram for the Hilti DX 351 can typically be found on the official Hilti website, in the product manual, or through authorized Hilti dealers.

How can I use the Hilti DX 351 parts diagram for maintenance?

You can use the parts diagram to locate specific components that may need maintenance or replacement, ensuring you have the correct parts when servicing the tool.

Are there any common issues that can be diagnosed using the Hilti DX 351 parts diagram?

Yes, common issues such as misfires or jams can often be diagnosed by referencing the parts diagram to check for worn or damaged components.

Can I order replacement parts directly from the Hilti DX 351 parts diagram?

Yes, once you identify the needed components from the parts diagram, you can order replacement parts directly through the Hilti website or by contacting a local Hilti representative.

Find other PDF article:

<https://soc.up.edu.ph/21-brief/Book?dataid=ZLD01-9280&title=facts-about-ancient-egypt-art.pdf>

Hilti Dx 351 Parts Diagram

Hilti's Website - Hilti Canada

With hilti.ca you can buy all your Hilti products online 24/7, whether you're in the office or onsite - all from your phone, computer or tablet.

Hilti Store Vancouver & Distribution Center (Cashless)

Hilti has power tools, grinders, drills, and saws as well as fasteners, anchors, design and layout software and services for construction professionals

Hilti - Power Tools, Fasteners and Software for Construction

Hilti offers a range of products and solutions for construction professionals, from cordless tools and anchors to engineering software and services.

Fasteners - Hilti Canada

See how your daily applications and your most critical engineering challenges can be served by our fasteners – such as chemical anchors, mechanical anchors, cast-in, insulation fasteners, nails, threaded studs and different types of screws

Sales Channels - Hilti Canada

Hilti's Website Get the job done faster on Hilti's website with online ordering and support built around your needs. Learn more

Hilti Store Mississauga & Distribution Center (Cashless)

Hilti has power tools, grinders, drills, and saws as well as fasteners, anchors, design and layout software and services for construction professionals

Products - Hilti Canada

Follow Hilti Products Power tools Software Dust and water management Tool inserts Measuring tools & scanners Fasteners Firestop & fire protection Modular support systems Facade mounting systems Construction chemicals Health and safety Tool storage and transport systems Services and training Solutions Productivity Solutions Control Costs ...

Authorized Distributors and Rental Locations - Hilti Canada

Hilti Stores Convenient locations provide on-hand inventory, expert technical advice, product training, minor repairs and diagnostic services. Learn more about Hilti Stores

Firestop & fire protection - Hilti Canada

Over 30 years of experience in providing internationally approved and tested firestop systems, premium software and support to save lives and buildings from fire

Products - Hilti Canada

Outils, technologies et logiciels pour l'industrie de la construction - nos produits s'intègrent parfaitement afin que vous puissiez les utiliser tout au long de votre conception, installation et gestion de bâtiment. Ils sont conçus pour une large gamme d'applications, des travaux quotidiens aux solutions pour les environnements les plus difficiles et les chantiers les plus exigeants.

Hilti's Website - Hilti Canada

With hilti.ca you can buy all your Hilti products online 24/7, whether you're in the office or onsite – all from your phone, computer or tablet.

Hilti Store Vancouver & Distribution Center (Cashless)

Hilti has power tools, grinders, drills, and saws as well as fasteners, anchors, design and layout software and services for construction professionals

Hilti - Power Tools, Fasteners and Software for Construction

Hilti offers a range of products and solutions for construction professionals, from cordless tools and anchors to engineering software and services.

Fasteners - Hilti Canada

See how your daily applications and your most critical engineering challenges can be served by our fasteners – such as chemical anchors, mechanical anchors, cast-in, insulation fasteners, ...

Sales Channels - Hilti Canada

Hilti's Website Get the job done faster on Hilti's website with online ordering and support built around your needs. Learn more

Hilti Store Mississauga & Distribution Center (Cashless)

Hilti has power tools, grinders, drills, and saws as well as fasteners, anchors, design and layout software and services for construction professionals

Products - Hilti Canada

Follow Hilti Products Power tools Software Dust and water management Tool inserts Measuring tools & scanners Fasteners Firestop & fire protection Modular support systems Facade ...

Authorized Distributors and Rental Locations - Hilti Canada

Hilti Stores Convenient locations provide on-hand inventory, expert technical advice, product training, minor repairs and diagnostic services. Learn more about Hilti Stores

Firestop & fire protection - Hilti Canada

Over 30 years of experience in providing internationally approved and tested firestop systems, premium software and support to save lives and buildings from fire

Products - Hilti Canada

Outils, technologies et logiciels pour l'industrie de la construction - nos produits s'intègrent parfaitement afin que vous puissiez les utiliser tout au long de votre conception, installation et ...

Explore our comprehensive Hilti DX 351 parts diagram to easily identify components and enhance your tool maintenance. Learn more for expert insights and tips!

[Back to Home](#)