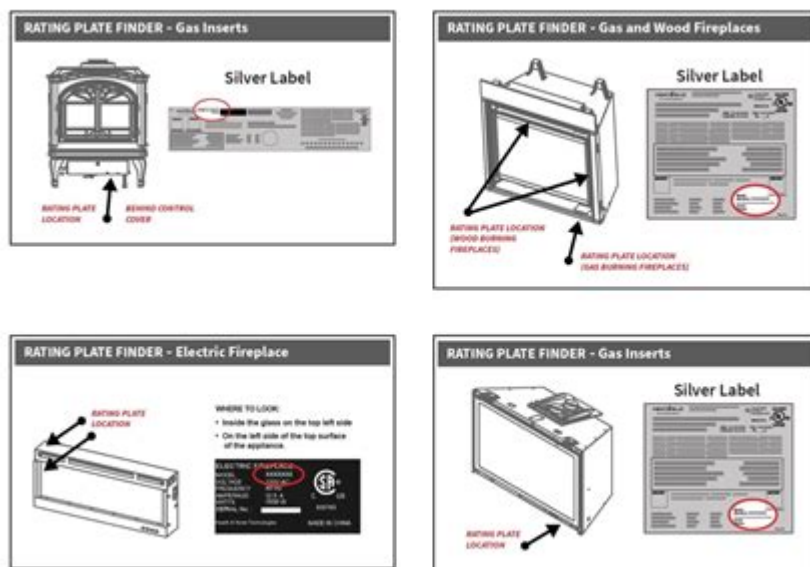


Heat N Glo Gas Fireplace Manual



Heat N Glo Gas Fireplace Manual is an essential resource for homeowners who wish to operate, maintain, and troubleshoot their gas fireplaces effectively. A gas fireplace offers the warmth and ambiance of a traditional fireplace without the hassle of wood. However, understanding how to use and care for your Heat N Glo model is crucial for ensuring safety and longevity. This article will provide a comprehensive guide to the Heat N Glo gas fireplace manual, covering its features, usage, maintenance, troubleshooting, and safety precautions.

Understanding Your Heat N Glo Gas Fireplace

Heat N Glo offers a variety of gas fireplace models, each designed to provide efficient heating and aesthetic appeal. Familiarizing yourself with the specific features of your model is vital for optimal use.

Types of Heat N Glo Gas Fireplaces

1. **Direct Vent Fireplaces:** These are designed to vent directly outside, providing efficient heating while ensuring that indoor air quality is not compromised.
2. **B-Vent Fireplaces:** These fireplaces require a venting system that draws air from inside the home and expels it outside.
3. **Vent-Free Fireplaces:** These units do not require a venting system, making them easier to install, but they may have stricter regulations due to potential indoor air quality issues.

Key Features

- Remote Control Operation: Many models come with remote controls for ease of use.
- Variable Flame Settings: Adjust the height and intensity of the flames according to your preference.
- Thermostatic Control: Some models allow for temperature regulation, ensuring comfort while optimizing fuel efficiency.
- Safety Features: Look for built-in safety measures such as automatic shut-off systems and safety screens.

Using Your Heat N Glo Gas Fireplace

Operating your Heat N Glo gas fireplace is straightforward when following the guidelines provided in the manual. Here's a step-by-step guide on how to light and operate your fireplace.

Initial Setup

1. Read the Manual: Before operating the fireplace, read through the manual specific to your model to understand its features and requirements.
2. Check the Gas Supply: Ensure that the gas supply is connected and turned on. If you have a propane model, check the propane tank levels.
3. Inspect the Venting System: If your model requires venting, make sure that the venting system is clear of obstructions.

Lighting the Fireplace

1. Locate the Control Knob: This is usually found at the base of the fireplace.
2. Turn the Control Knob to "Pilot": This allows you to light the pilot light.
3. Press the Ignition Button: If your model is equipped with an electronic ignition, press the button until the pilot light ignites. For manual ignition, use a long lighter.
4. Hold the Control Knob: Keep it pressed in for about 30 seconds to allow the thermocouple to heat up.
5. Turn the Control Knob to "On": Once the pilot is lit, turn the knob to the "On" position to ignite the main burner.

Adjusting the Flame

- Use the control knob or remote to adjust the flame height and intensity to your preference.

Maintaining Your Heat N Glo Gas Fireplace

Proper maintenance is crucial for the safety and longevity of your gas fireplace. Regular cleaning and inspections can prevent issues and ensure efficient operation.

Routine Maintenance Tasks

1. **Inspect for Gas Leaks:** Regularly check connections for any signs of gas leaks. If you smell gas, turn off the supply and consult a professional.
2. **Clean the Glass:** Use a non-abrasive cleaner to keep the glass clean and clear. Avoid using ammonia-based cleaners.
3. **Check the Venting System:** Ensure that the venting system is free of debris and blockages.

Annual Professional Inspections

It is advisable to have your fireplace inspected by a qualified technician at least once a year. They can check for:

- Proper gas pressure
- Venting efficiency
- Safe operation of safety features

Troubleshooting Common Issues

Even the best gas fireplaces can encounter issues. Understanding common problems and their solutions can help you troubleshoot effectively.

Common Issues and Solutions

1. **Pilot Light Won't Stay Lit:**
 - Check the thermocouple; it may need adjustment or replacement.
 - Ensure the gas supply is turned on.
2. **Flames are Too Low or High:**
 - Adjust the control knob to modify the flame height.
 - Ensure that the fireplace is not obstructed by furniture or decor.
3. **Glass is Cloudy or Dirty:**
 - Clean the glass with a suitable cleaner.
 - Ensure that the fireplace is not burning too much gas, which can cause soot buildup.
4. **Strange Noises:**

- These may indicate a loose component or an issue with the gas supply. Consult the manual or a technician.

Safety Precautions

Safety should always be a priority when operating a gas fireplace. Here are essential safety tips:

- Install Carbon Monoxide Detectors: Place these detectors near your fireplace and check them regularly.
- Keep Flammable Materials Away: Maintain a safe distance between the fireplace and any combustible materials.
- Do Not Block Vents: Ensure no furniture or decor obstructs the venting system.
- Educate Family Members: Ensure that everyone knows how to operate the fireplace safely and what to do in case of an emergency.

Conclusion

The Heat N Glo gas fireplace manual is an invaluable guide that can help you enjoy the warmth and ambiance of your fireplace while ensuring safe and efficient operation. By understanding your model's features, following proper usage and maintenance practices, troubleshooting common issues, and adhering to safety precautions, you can maximize your fireplace's performance and longevity. Whether you are a first-time user or a seasoned owner, having this knowledge at your fingertips will enhance your experience and ensure that your Heat N Glo gas fireplace remains a cherished part of your home for years to come.

Frequently Asked Questions

Where can I find the Heat n Glo gas fireplace manual?

You can find the Heat n Glo gas fireplace manual on the official Heat n Glo website under the 'Support' or 'Downloads' section.

What should I do if I can't locate my Heat n Glo gas fireplace manual?

If you can't locate your manual, you can contact Heat n Glo customer service for assistance or download a digital copy from their website.

How often should I perform maintenance on my Heat n Glo gas fireplace?

It is recommended to perform maintenance at least once a year to ensure safe and efficient operation of your Heat n Glo gas fireplace.

What are the common troubleshooting steps for a Heat n Glo gas fireplace?

Common troubleshooting steps include checking the gas supply, ensuring the pilot light is lit, and inspecting for any blockages in the venting system.

Can I install a Heat n Glo gas fireplace myself?

While some homeowners may install a Heat n Glo gas fireplace themselves, it is highly recommended to hire a professional for safety and compliance with local codes.

What type of gas does a Heat n Glo fireplace use?

Heat n Glo gas fireplaces can operate using either natural gas or propane, depending on the model and installation.

How do I reset my Heat n Glo gas fireplace?

To reset your Heat n Glo gas fireplace, turn off the fireplace, wait for a few minutes, and then relight the pilot according to the instructions in the manual.

What safety features are included in Heat n Glo gas fireplaces?

Heat n Glo gas fireplaces typically include safety features like an automatic shut-off, glass doors, and a safety pilot system.

How do I clean the glass on my Heat n Glo gas fireplace?

To clean the glass, turn off the fireplace and allow it to cool, then use a non-abrasive cleaner specifically designed for fireplace glass to gently wipe it down.

What are the benefits of using a Heat n Glo gas fireplace?

Benefits of using a Heat n Glo gas fireplace include convenience, ease of use, efficient heating, and the ability to enjoy a flame without the hassle of wood.

Find other PDF article:

<https://soc.up.edu.ph/50-draft/files?docid=dZL64-6232&title=relief-earth-science-definition.pdf>

Heat N Glo Gas Fireplace Manual

PS2 ROMs Download - Free Sony PlayStation 2 Games

Download unlimited Sony PlayStation 2 ROMs for free only at ConsoleRoms. Variety of PS2 games that can be played on both computer or phone.

Budokai Tenkaichi 3 ROM Free Download for PS2 - ConsoleRoms

Download Dragon Ball Z - Budokai Tenkaichi 3 game for Sony PlayStation 2 and enjoy playing the full version of the ROM for free.

Underground ROM Free Download for PS2 - ConsoleRoms

Download Need For Speed - Underground game for Sony PlayStation 2 and enjoy playing the full version of the ROM for free.

Silent Hill 2 ROM Free Download for PS2 - ConsoleRoms

Download Silent Hill 2 game for Sony PlayStation 2 and enjoy playing the full version of the ROM for free.

Def Jam - Fight For NY ROM Free Download for PS2 - ConsoleRoms

Download Def Jam - Fight For NY game for Sony PlayStation 2 and enjoy playing the full version of the ROM for free.

God of War II (Europe, Australia) ROM Free Download for PS2

Download God of War II (Europe, Australia) game for Sony PlayStation 2 and enjoy playing the full version of the ROM for free.

Persona 3 FES ROM Free Download for PS2 - ConsoleRoms

Have fun playing the amazing Shin Megami Tensei - Persona 3 FES game for Sony PlayStation 2. This is the USA version of the game and can be played using any of the PS2 emulators available ...

Marvel VS. Capcom 2 - New Age of Heroes - ConsoleRoms

Download Marvel VS. Capcom 2 - New Age of Heroes game for Sony PlayStation 2 and enjoy playing the full version of the ROM for free.

ConsoleRoms - Download Free ROMs & Emulators for GBA, SNES, ...

Biggest collection of console ROMs and emulators for the most popular consoles like GBA, NDS, N64, SNES, SEGA, PS, Atari and more exclusively at ConsoleRoms.

Metal Gear Solid 2 - Sons of Liberty ROM Free Download for PS2 ...

Download Metal Gear Solid 2 - Sons of Liberty game for Sony PlayStation 2 and enjoy playing the full version of the ROM for free.

Is it possible to use arrow keys alone to expand tree node in ...

Jan 20, 2011 · When using Eclipse I browse through the package explorer tree using the keyboard arrows a lot. In Windows I can expand a collapsed node by pressing the → key. In ...

Is it possible to use arrow keys alone to expand tree node in ...

keyboard-shortcuts ide ubuntu When using Eclipse I browse through the package explorer tree using the keyboard arrows a lot. In Windows I can expand a collapsed node by pressing the → ...

Eclipse Community Forums: Standard Widget Toolkit (SWT) » Can't expand ...

The Eclipse Foundation - home to a global community, the Eclipse IDE, Jakarta EE and over 350 open source projects, including runtimes, tools and frameworks.

Can I configure eclipse to expand packages with the right arrow ...

From a similar question on stack overflow, I found out how to configure arrow keys to work on Eclipse's package explorer on Ubuntu. In short: Put this into your ~/.gtkrc-2.0 and you should ...

Expand tree nodes with right and left arrow keys on Eclipse

Mar 29, 2017 · I have a problem with the right and left keys on Eclipse. Until now, I have used Eclipse on Windows platform and it lets me open the child elements when I clicked on the right ...

Is there way to expand all folders in Eclipse project view and search ...

Jul 1, 2010 · 66 In Windows: Expand all all in project explorer is Shift + Numpad * (multiplty), as mentioned before. Collapse all in project explorer is Ctrl + Shift + Numpad - (subtract). ...

Eclipse Community Forums: Nebula » Expand/Collapse of tree by arrow ...

Hello, In our RCP application we are creating tree in grid by GridTreeViewer. And i need a help in expanding or collapsing the tree on pressing of arrow key left and right. For double click and ...

Automatically expand all in Eclipse Search results - Stack Overflow

May 11, 2012 · No but you can use the keyboard shortcuts of your OS. On Linux, use Nk* (* on the numpad) to expand the current node and all children. Windows user can use Shift+Nk* On ...

Is there a way to collapse all code blocks in Eclipse? - Stack Overflow

Nov 13, 2009 · Key binding is different for Eclipse Neon on Linux. To check key binding for you version on eclipse on your OS, check under Preferences->General->Keys. or search for "keys" ...

Eclipse Community Forums: Nebula » Expand/Collapse of tree by arrow ...

The Eclipse Foundation - home to a global community, the Eclipse IDE, Jakarta EE and over 350 open source projects, including runtimes, tools and frameworks.

Find the essential Heat N Glo gas fireplace manual for installation

[Back to Home](#)