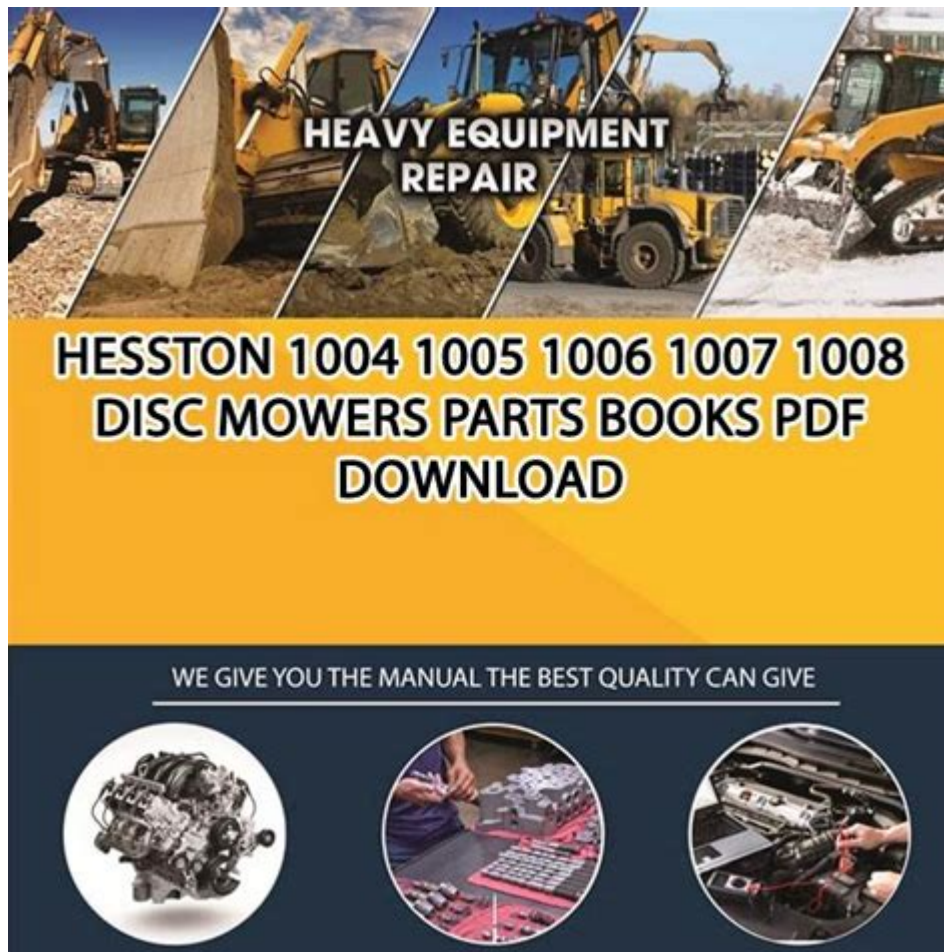


# Hesston 1004 Disc Mower Owners Manual



## Hesston 1004 Disc Mower Owners Manual

The Hesston 1004 Disc Mower is a reliable and efficient piece of equipment designed for hay and forage cutting. This article serves as a comprehensive guide to the owner's manual for the Hesston 1004, outlining essential features, maintenance tips, operational guidelines, and troubleshooting techniques. Understanding these elements can ensure the longevity and optimal performance of your disc mower, ultimately contributing to effective farm management.

## Overview of the Hesston 1004 Disc Mower

The Hesston 1004 Disc Mower is engineered to deliver high performance and durability. It features a robust design, making it suitable for various mowing applications, including grass, alfalfa, and other forage crops. Key components include:

- Disc Blades: Sharp and durable, designed for efficient cutting.
- Cutting Width: Typically around 10 feet, allowing for wide swaths.
- Hydraulic Functions: Enables easy lifting and lowering of the mower.
- Adjustable Skids: Allows for customization based on the terrain.

# Specifications

Understanding the specifications of the Hesston 1004 can help users maximize its capabilities. Here are some important details:

- Weight: Approximately 3,200 lbs
- Power Requirement: 50 to 85 horsepower
- Cutting Height: Adjustable from 1 inch to 4 inches
- Number of Discs: 4 discs with two blades per disc

# Safety Precautions

Safety is paramount when operating the Hesston 1004 Disc Mower. Here are some essential safety precautions:

1. Read the Manual: Before operating the mower, thoroughly read the owner's manual to understand all functions and safety measures.
2. Wear Protective Gear: Always wear appropriate safety gear, including gloves, goggles, and sturdy footwear.
3. Check Equipment: Inspect the mower for any signs of wear or damage before use.
4. Clear the Area: Ensure the mowing area is free from debris, rocks, or obstacles that could cause accidents.
5. Follow Proper Procedures: Adhere to all operational guidelines to prevent injury and equipment damage.

# Operating the Hesston 1004 Disc Mower

To achieve optimal results, it is crucial to understand how to operate the Hesston 1004 properly. Here are the steps to follow:

## Pre-Operation Checks

Before starting the mower, perform the following checks:

- Fluid Levels: Check hydraulic fluid, engine oil, and coolant levels.
- Belts and Chains: Inspect for wear or damage and adjust tension as needed.
- Blade Condition: Ensure that all blades are sharp and securely attached.
- Electrical Connections: Verify that all electrical components are functioning correctly.

## Starting the Mower

1. Attach the Mower: Securely mount the mower to the tractor using the appropriate hitch.

2. Engage Power Take-Off (PTO): Ensure the PTO is properly connected.
3. Lower the Mower: Use the hydraulic lift to lower the mower to the desired cutting height.
4. Start the Tractor: Turn on the tractor and allow it to warm up.
5. Engage the Mower: Activate the mower's PTO to begin cutting.

## **Mowing Technique**

- Speed: Maintain a steady speed to ensure even cutting.
- Overlap: Overlap each pass slightly to avoid uncut strips.
- Turning: Make wide turns to prevent damage to the mower and ensure smooth operation.
- Height Adjustment: Adjust the cutting height based on the crop type and terrain.

## **Maintenance Guidelines**

Regular maintenance is essential for the longevity and performance of the Hesston 1004 Disc Mower. Follow these maintenance tips:

### **Daily Maintenance**

- Clean the Mower: Remove any debris and residue after each use.
- Inspect Blades: Check blades for sharpness and signs of wear.
- Lubricate Components: Ensure all moving parts are lubricated as per the manual.

### **Weekly Maintenance**

- Fluid Checks: Inspect hydraulic fluid, engine oil, and coolant levels.
- Belt Tension: Check and adjust the tension of belts as necessary.
- Tire Pressure: Verify that tires are properly inflated.

### **Seasonal Maintenance**

- Blade Replacement: Replace blades at the beginning of each season.
- Full Inspection: Conduct a comprehensive inspection of all components, including electrical systems.
- Storage Preparation: Clean and prepare the mower for storage during off-seasons.

## **Troubleshooting Common Issues**

Despite proper maintenance and careful operation, issues may arise with the Hesston 1004

Disc Mower. Here are some common problems and their solutions:

## **Blades Not Cutting Properly**

- Causes: Dull blades, incorrect height settings, or debris buildup.
- Solutions: Sharpen or replace blades, adjust the cutting height, and clean the mower.

## **Hydraulic Issues**

- Causes: Low fluid levels or leaks in the hydraulic system.
- Solutions: Check fluid levels and inspect hoses for leaks. Replace any damaged components.

## **Uneven Cutting**

- Causes: Incorrect speed, uneven terrain, or improper adjustment.
- Solutions: Adjust mower speed, check wheel alignment, and modify cutting height as needed.

## **Conclusion**

The Hesston 1004 Disc Mower is a valuable asset for farmers and agricultural professionals. By adhering to the guidelines outlined in this owners manual, users can ensure effective operation, proper maintenance, and troubleshooting. Investing time in understanding and implementing these practices will lead to improved efficiency and productivity in hay and forage management. Always refer back to the owner's manual for specific details related to your model, and remember that regular checks and maintenance are key to prolonging the life of your equipment.

## **Frequently Asked Questions**

### **What is the primary purpose of the Hesston 1004 disc mower owners manual?**

The primary purpose of the Hesston 1004 disc mower owners manual is to provide operators with detailed information on the operation, maintenance, and troubleshooting of the machine.

## **Where can I find a digital copy of the Hesston 1004 disc mower owners manual?**

You can often find a digital copy of the Hesston 1004 disc mower owners manual on the official Hesston website or through authorized dealers.

## **How often should I perform maintenance as outlined in the Hesston 1004 disc mower owners manual?**

Maintenance should be performed according to the schedule outlined in the manual, typically after every 50 hours of operation or at the beginning of each mowing season.

## **What safety precautions are highlighted in the Hesston 1004 disc mower owners manual?**

The manual emphasizes wearing appropriate personal protective equipment, ensuring the machine is in proper working order before use, and understanding emergency stop procedures.

## **Does the Hesston 1004 disc mower owners manual include troubleshooting tips?**

Yes, the manual includes troubleshooting tips for common issues such as poor cutting performance, unusual noises, and mechanical failures.

## **What type of oil should be used for the Hesston 1004 disc mower as per the owners manual?**

The owners manual specifies using high-quality hydraulic oil and engine oil that meets the manufacturer's recommendations.

## **Is there a section on parts replacement in the Hesston 1004 disc mower owners manual?**

Yes, there is a section on parts replacement that outlines how to identify, order, and replace various components of the mower.

## **Can I use the Hesston 1004 disc mower in wet conditions according to the manual?**

The manual advises against using the mower in excessively wet conditions as it can lead to poor cutting performance and potential damage to the machine.

## **What are the recommended cutting heights mentioned in the Hesston 1004 disc mower owners manual?**

The manual provides guidelines for various cutting heights depending on the type of crop being mowed, typically ranging from 1 to 4 inches.

# How can I contact customer support for questions regarding the Hesston 1004 disc mower owners manual?

Customer support contact information is usually provided in the manual, including phone numbers and email addresses for assistance.

Find other PDF article:

<https://soc.up.edu.ph/30-read/files?trackid=uVU00-6800&title=how-to-get-in-touch-with-your-guardian-angel.pdf>

## Hesston 1004 Disc Mower Owners Manual

### **Hesston - Massey Ferguson**

Located in Kansas, the Hesston plant has a 55-year history manufacturing farm equipment. Hesston engineers pioneered the big baler concept in the 1970s, ...

### **Hesston Farm Equipment & Tractors for sale in Canada & USA**

AgDealer provides a comprehensive collection of Hesston farm equipment from top dealers. Select price range, model year, and condition to find the ...

### **Hesston College**

Hesston College is a Christ-centered community where each student is educated and nurtured academically, socially and spiritually.

### *Hesston, Kansas - Wikipedia*

Hesston is a city in Harvey County, Kansas, United States. [1] As of the 2020 census, the population of the city was 3,505. [4] Large manufacturing facilities for AGCO ...

### Uncovering the Hesston Story - AGCO FarmLife

Still located in the small, rural town where it all started, the Hesston facility has gone on to develop some of the most productive machines in agriculture, ...

### **Hesston - Massey Ferguson**

Located in Kansas, the Hesston plant has a 55-year history manufacturing farm equipment. Hesston engineers pioneered ...

### Hesston Farm Equipment & Tractors for sale in Canada & USA

AgDealer provides a comprehensive collection of Hesston farm equipment from top dealers. Select price range, model year, and ...

### **Hesston College**

Hesston College is a Christ-centered community where each student is educated and nurtured academically, socially and ...

### **Hesston, Kansas - Wikipedia**

Hesston is a city in Harvey County, Kansas, United States. [1] As of the 2020 census, the population of the city was 3,505. [4] Large ...

### **Uncovering the Hesston Story - AGCO FarmLife**

Still located in the small, rural town where it all started, the Hesston facility has gone on to develop some of the most productive ...

Discover the Hesston 1004 disc mower owners manual for essential maintenance tips and operation guidelines. Learn more to maximize your mower's performance today!

[Back to Home](#)