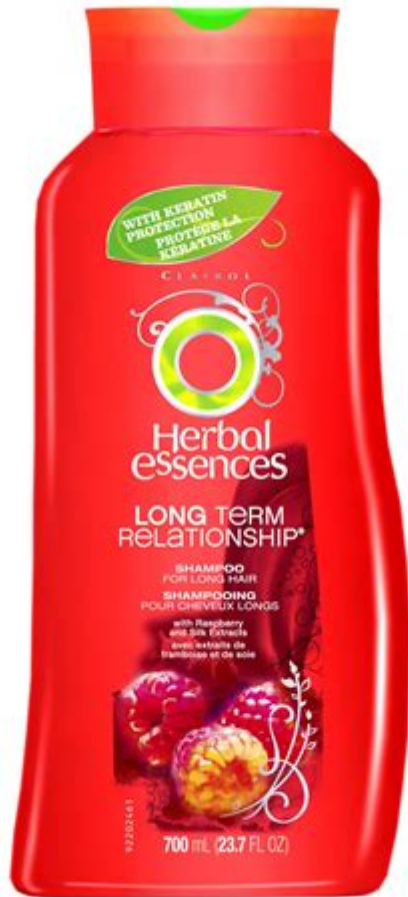


Herbal Essences Long Term Relationship Shampoo



Herbal Essences Long Term Relationship Shampoo is more than just a product; it is a commitment to nurturing and cherishing your hair in the long run. For those who seek a deep, luscious, and vibrant mane, this shampoo serves as a protective shield against the daily wear and tear of environmental stressors. This article delves into the benefits, ingredients, and overall significance of Herbal Essences Long Term Relationship Shampoo, providing insights into why it should be a staple in your hair care routine.

Understanding the Product

Herbal Essences Long Term Relationship Shampoo is specifically designed for those with color-treated hair. Its unique formulation aims to protect and enhance the vibrancy of dyed locks while ensuring they remain healthy and manageable. With a delightful fragrance and a focus on natural ingredients, this shampoo is a popular choice among hair care enthusiasts.

Key Features

1. **Color Protection:** The primary benefit of using this shampoo is its ability to protect color-treated hair. It helps to maintain color intensity and prevent fading, allowing you to enjoy your vibrant hues for longer.
2. **Moisture Retention:** The shampoo is designed to hydrate hair, making it ideal for those who often experience dryness due to coloring processes.
3. **Sulfate-Free Formula:** For those concerned about harsh chemicals, Herbal Essences Long Term Relationship Shampoo is sulfate-free, making it a gentler option for hair care.
4. **Natural Ingredients:** The formulation includes botanical ingredients that nourish and revitalize hair, promoting overall health and shine.
5. **Fragrance:** The shampoo boasts an enchanting scent that leaves your hair smelling fresh and clean throughout the day.

Ingredients Breakdown

Understanding what goes into your hair care products is crucial, especially for those who prioritize natural and safe ingredients. Herbal Essences Long Term Relationship Shampoo features a blend of botanical extracts and essential oils.

Notable Ingredients

- **Aloe Vera:** Known for its hydrating properties, aloe vera helps to soothe the scalp and moisturize hair, preventing dryness and breakage.
- **Rose Extract:** This ingredient not only adds a pleasant fragrance but also possesses anti-inflammatory properties that can help soothe the scalp.
- **Vitamin B:** Essential for maintaining hair health, Vitamin B promotes growth, strength, and shine.
- **Natural Oils:** These oils help to lock in moisture and add a layer of protection against environmental damage.

Benefits of Using Herbal Essences Long Term Relationship Shampoo

Choosing the right shampoo can significantly impact the health and appearance of your hair. Here are some of the top benefits associated with using Herbal Essences Long Term

Relationship Shampoo:

1. Enhanced Color Longevity

One of the standout features of this shampoo is its color protection capabilities. It works to prevent color fading, ensuring that your hair remains vibrant and beautiful. By forming a protective barrier around the hair cuticle, it minimizes the impact of UV rays and environmental pollutants that can cause color to dull over time.

2. Improved Hair Texture

Users often report an improvement in the texture of their hair after regular use of this shampoo. It helps to detangle hair, making it easier to manage and style. The moisturizing properties of the shampoo make hair feel soft and silky, adding to its overall appeal.

3. Scalp Health

Healthy hair begins with a healthy scalp. The soothing ingredients in Herbal Essences Long Term Relationship Shampoo can help alleviate dryness and irritation, promoting a balanced environment for hair growth. A well-nourished scalp can lead to thicker, healthier hair.

4. Eco-Friendly Approach

Herbal Essences places a strong emphasis on sustainability. The company is committed to using recyclable materials and sourcing ingredients responsibly. Choosing this shampoo is not only beneficial for your hair but also for the environment.

5. Affordability

Despite its premium quality and effective formulation, Herbal Essences Long Term Relationship Shampoo is competitively priced, making it accessible to a wide range of consumers. This affordability means you can maintain your hair without breaking the bank.

How to Use Herbal Essences Long Term Relationship Shampoo

To maximize the benefits of this product, following the correct usage instructions is essential. Here's a simple guide on how to effectively use Herbal Essences Long Term Relationship Shampoo:

1. **Wet Your Hair:** Begin by thoroughly wetting your hair with warm water to help open up the hair cuticles.
2. **Apply Shampoo:** Squeeze a generous amount of shampoo into your palm and rub your hands together to distribute it evenly.
3. **Massage Into Scalp:** Gently massage the shampoo into your scalp using your fingertips. Focus on areas that tend to accumulate oil and product buildup.
4. **Work Through Lengths:** After cleansing the scalp, work the shampoo through the lengths of your hair, ensuring all strands are coated.
5. **Rinse Thoroughly:** Rinse your hair thoroughly with cool water. This helps to close the hair cuticles and lock in moisture.
6. **Follow with Conditioner:** For optimal results, follow up with the Herbal Essences Long Term Relationship Conditioner to further enhance hydration and protection.

Customer Reviews and Feedback

Customer feedback is a vital component in assessing the effectiveness of any product. Here are some common themes from reviews of Herbal Essences Long Term Relationship Shampoo:

- **Positive Color Retention:** Many users have praised the shampoo for its ability to preserve color-treated hair, noting that their color lasts significantly longer compared to other brands.
- **Softness and Manageability:** Reviewers often comment on how soft and manageable their hair feels after using the shampoo, making styling much easier.
- **Pleasant Scent:** The fragrance is frequently highlighted as a favorite feature, with users reporting that it lingers throughout the day.
- **Scalp Comfort:** Several users have experienced a reduction in scalp irritation and dryness, attributing it to the soothing properties of the shampoo.
- **Value for Money:** Many customers appreciate the affordability of the product, especially given its high quality and effectiveness.

Conclusion

In the world of hair care, finding a reliable and effective shampoo can be a challenge. Herbal Essences Long Term Relationship Shampoo stands out as a noteworthy option for those with color-treated hair, offering a blend of protection, hydration, and delightful fragrance. With its commitment to natural ingredients and eco-friendly practices, it not only

cares for your hair but also aligns with a more sustainable lifestyle.

Whether you are looking to prolong the vibrancy of your hair color, improve hair texture, or simply enjoy a luxurious washing experience, this shampoo checks all the boxes. By incorporating Herbal Essences Long Term Relationship Shampoo into your routine, you are taking a significant step forward in your hair care journey, ensuring that your locks remain healthy, vibrant, and full of life for years to come.

Frequently Asked Questions

What are the key benefits of using Herbal Essences Long Term Relationship Shampoo?

Herbal Essences Long Term Relationship Shampoo is designed to strengthen hair and enhance its natural shine. It contains ingredients that help nourish and protect hair, making it ideal for those with long hair looking to maintain its health and manageability.

Is Herbal Essences Long Term Relationship Shampoo suitable for all hair types?

Yes, Herbal Essences Long Term Relationship Shampoo is formulated to be gentle and effective for all hair types, including straight, wavy, and curly hair. However, individuals with specific scalp conditions may want to consult a dermatologist.

What fragrance can I expect from Herbal Essences Long Term Relationship Shampoo?

Herbal Essences Long Term Relationship Shampoo features a romantic and floral scent, often described as a blend of red raspberry and exotic flowers, creating a delightful and refreshing experience during use.

Does Herbal Essences Long Term Relationship Shampoo contain sulfates?

No, Herbal Essences Long Term Relationship Shampoo is sulfate-free, making it a great choice for individuals looking to avoid harsh chemicals in their hair care routine.

How often should I use Herbal Essences Long Term Relationship Shampoo for best results?

For optimal results, it is recommended to use Herbal Essences Long Term Relationship Shampoo 2-3 times a week, depending on your hair type and needs. Adjust the frequency based on how oily or dry your hair tends to get.

Can I use Herbal Essences Long Term Relationship

Shampoo on color-treated hair?

Yes, Herbal Essences Long Term Relationship Shampoo is safe for color-treated hair. Its gentle formula helps to maintain color vibrancy while providing moisture and nourishment.

What is the packaging like for Herbal Essences Long Term Relationship Shampoo?

Herbal Essences Long Term Relationship Shampoo typically comes in a recyclable bottle with a pump or flip-top cap, featuring a vibrant design that reflects the product's floral theme and branding.

Find other PDF article:

<https://soc.up.edu.ph/40-trend/files?ID=EXP14-0233&title=mechanical-advantage-worksheet-answers.pdf>

Herbal Essences Long Term Relationship Shampoo

Discounted New and Used Metal Buildings For Sale

Find your affordable new and used metal building! Browse listings for discounted steel structures, metal buildings, components, and more. Get started today!

Metal Buildings for Sale | Shop Steel Buildings at Best Price

Viking Steel Structures offers metal buildings for sale at affordable prices. Buy carports, garage, barns, RV cover, shed, workshop, commercial building, and any custom metal structures at our steel buildings for sale.

Metal Buildings - 39 Steel Building Types & 125+ Kits ...

General Steel provides metal building kits delivered to your job site featuring pre-punched framed openings and all bolt together construction. Prefabricating our steel buildings ahead of time is the primary reason why our building system can save you up to 50% when compared to the cost of traditional construction methods.

Canceled Metal Buildings on Sale - View Pricing

Our canceled metal buildings provide many choices for agricultural, residential, industrial, and commercial use. From increased durability to increased energy efficiency, our metal building kits are a great choice.

Metal Buildings For Sale - Alan's Factory Outlet

Find durable metal buildings for sale at affordable prices when you order from Alan's Factory Outlet! Create custom metal buildings to suit your needs and take advantage of our excellent customer service.

Testing for COVID-19 | COVID-19 | CDC

Mar 10, 2025 · Getting a COVID-19 test Buy self-tests (at-home tests) Buy self-tests (at-home tests)

online or in pharmacies and retail ...

Overview of Testing for SARS-CoV-2 | COVID-19 | CDC

Aug 29, 2024 · This overview describes current information on the types of tests used to detect SARS-CoV-2 infection and their intended ...

Laboratory Testing for Epstein-Barr Virus (EBV)

Apr 10, 2024 · Laboratory testing can help distinguish whether someone is susceptible to EBV infection or has a recent or past ...

Clinical Testing and Diagnosis for Tuberculosis

Apr 17, 2025 · For more details on interpreting TB skin test results, please visit Clinical Testing Guidance for Tuberculosis: Tuberculin Skin ...

Laboratory Testing for CMV and Congenital CMV

Apr 15, 2024 · The enzyme-linked immunosorbent assay is the most common serologic test for measuring antibody to ...

Discover the benefits of Herbal Essences Long Term Relationship Shampoo for healthy

[Back to Home](#)