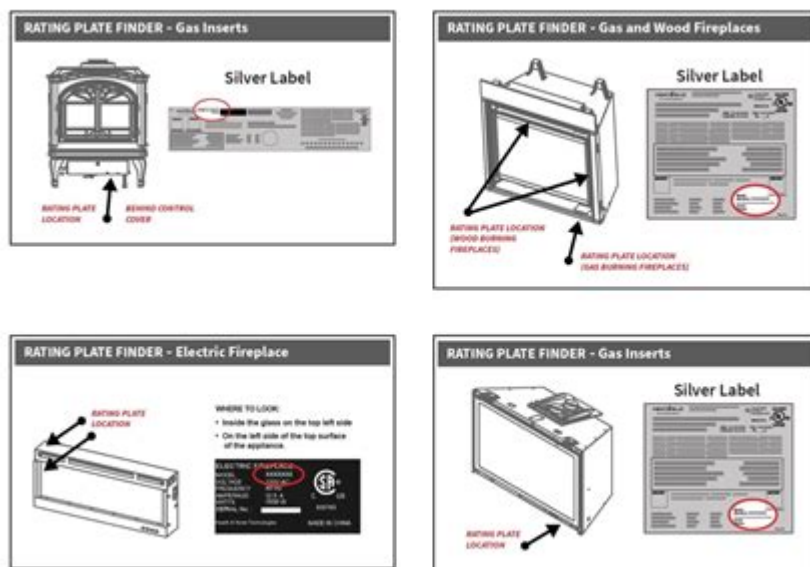


Heat And Glo Fireplace Manual



Heat and Glo fireplace manual is an essential resource for anyone who owns or is considering purchasing a Heat and Glo fireplace. This manual provides comprehensive guidance on installation, operation, maintenance, and troubleshooting, ensuring that you can enjoy your fireplace safely and effectively. As you navigate through the details of your fireplace, having a manual at your fingertips can enhance your understanding and improve your overall experience. This article will delve into the various aspects of the Heat and Glo fireplace manual, including its key features, common settings, and essential maintenance tips.

Understanding the Heat and Glo Fireplace Manual

The Heat and Glo fireplace manual serves multiple purposes. It is not just a set of instructions; it is a guide to ensuring the longevity and efficiency of your fireplace. Whether you have a gas, electric, or wood-burning unit, the manual provides specific instructions tailored to your model.

What is Included in the Manual?

A typical Heat and Glo fireplace manual includes the following sections:

- **Installation Guidelines:** Step-by-step instructions for proper installation.
- **Operating Instructions:** Information on how to safely operate your fireplace.
- **Maintenance Procedures:** Recommended maintenance routines and schedules.

- **Troubleshooting Tips:** Common issues and their solutions.
- **Safety Information:** Important safety precautions to follow.

Each section is designed to help you maximize the performance of your fireplace while ensuring safety for you and your family.

Installation of Your Heat and Glo Fireplace

Proper installation is crucial for the effective operation of your fireplace. The manual provides detailed instructions that cover everything from selecting the right location to connecting gas lines or electrical wiring.

Key Installation Steps

1. **Choosing the Right Location:** Ensure that the fireplace is installed in a space that allows for proper ventilation and accessibility.
2. **Preparing the Site:** Clear the area of any flammable materials and ensure the surface is level.
3. **Ventilation Requirements:** Follow the manual's guidelines on venting systems to prevent carbon monoxide buildup.
4. **Connecting Fuel Lines:** If you have a gas fireplace, the manual outlines how to safely connect the gas lines.
5. **Final Checks:** Once installed, verify that all connections are secure, and perform any necessary inspections.

Always consult the manual specific to your model for the most accurate instructions.

Operating Your Heat and Glo Fireplace

Once your fireplace is installed, understanding how to operate it is essential. The manual will guide you through the various features available, such as ignition systems, flame adjustments, and remote control options.

Operating Features to Know

- **Ignition Systems:** Familiarize yourself with the type of ignition system your fireplace uses, whether it's manual or electronic.
- **Flame Control:** Learn how to adjust the flame size and intensity to create the desired ambiance.
- **Remote Control Use:** If your model includes a remote, understand its functions, including turning the fireplace on/off and adjusting the heat settings.

Maintenance and Care

Regular maintenance is vital for the longevity of your Heat and Glo fireplace. The manual provides a maintenance schedule and detailed instructions to keep your unit operating efficiently.

Essential Maintenance Tasks

- Cleaning the Glass: Regularly clean the glass door to ensure clear visibility of the flames.
- Inspecting the Vent System: Check for blockages or damage in the venting system to prevent hazardous situations.
- Checking Gas Connections: Periodically inspect the gas lines and connections for leaks or wear.
- Replacing Batteries: If your fireplace has a remote or battery-operated features, replace the batteries regularly to ensure proper function.

Recommended Maintenance Schedule

- Monthly: Clean the glass and inspect the firebox.
- Seasonally: Check the vent system and perform a thorough inspection of gas connections.
- Annually: Schedule a professional inspection and cleaning to maintain optimal performance.

Troubleshooting Common Issues

Even with proper installation and maintenance, issues may arise. The Heat and Glo fireplace manual contains a troubleshooting section that can help you identify and resolve common problems.

Common Issues and Solutions

- Fireplace Won't Ignite:
 - Check the gas supply and ensure the valve is open.
 - Verify that the ignition system is functioning correctly.
- Uneven Flame Height:
 - Inspect for any blockages in the burner.
 - Adjust air shutter if applicable.
- Odor When Using Fireplace:
 - Ensure that the venting system is clear and functioning properly.
 - Check for any leaks in gas connections.
- Remote Control Malfunction:
 - Replace batteries and ensure the remote is within range.
 - Check for any obstructions blocking the signal.

Safety Precautions

Safety is paramount when operating a Heat and Glo fireplace. The manual includes important safety information to protect you and your home.

Essential Safety Tips

- Install Carbon Monoxide Detectors: Ensure that detectors are installed and functioning properly.
- Keep Flammable Materials Away: Maintain a safe distance between the fireplace and any flammable objects.
- Regularly Inspect the Unit: Stay vigilant for any signs of wear or malfunction.
- Educate Family Members: Make sure everyone in the household knows how to operate the fireplace and understands safety protocols.

Conclusion

A **Heat and Glo fireplace manual** is an invaluable tool for any fireplace owner. It not only provides essential information on installation, operation, and maintenance but also promotes safety and efficiency. By following the guidelines outlined in the manual, you can enjoy the warmth and ambiance of your fireplace for years to come. Whether you are a seasoned user or a first-time owner, familiarizing yourself with your manual is crucial for a safe and enjoyable experience. Remember, when in doubt, always refer back to the manual or consult a professional for assistance.

Frequently Asked Questions

Where can I find the Heat and Glo fireplace manual?

You can find the Heat and Glo fireplace manual on the official Heat and Glo website under the 'Support' or 'Resources' section. You may also contact customer service for assistance.

What should I do if I lost my Heat and Glo fireplace manual?

If you've lost your Heat and Glo fireplace manual, you can download a digital copy from the Heat and Glo website or request a replacement manual by contacting their customer support.

How do I troubleshoot my Heat and Glo fireplace using the manual?

To troubleshoot your Heat and Glo fireplace, refer to the troubleshooting section of the manual, which typically includes common issues, error codes, and step-by-step instructions for resolving them.

Is there a maintenance schedule outlined in the Heat and Glo fireplace manual?

Yes, the Heat and Glo fireplace manual includes a maintenance schedule that outlines routine checks and services needed to ensure the safety and efficiency of your fireplace.

Can I find installation instructions in the Heat and Glo fireplace manual?

Yes, the Heat and Glo fireplace manual provides detailed installation instructions, including safety precautions, required tools, and step-by-step guidelines to ensure proper setup.

Find other PDF article:

<https://soc.up.edu.ph/16-news/Book?docid=gDg31-0162&title=dark-side-of-the-moon-analysis.pdf>

Heat And Glo Fireplace Manual

Promotions? When should I join : r/PlanetFitnessMembers - Reddit

Planet fitness is a value oriented gym. It's mostly for people looking to improve their fitness and not aimed at bodybuilding.

Guide to Cancel Planet Fitness Online : r/PlanetFitnessMembers

Feb 23, 2024 · Hello Planet Fitness members, Here is a guide on how to cancel your Planet Fitness membership online. To cancel online regardless of your state or home gym. Please ...

Review of Planet Fitness as someone who was long opposed : r

Planet fitness is a value oriented gym. It's mostly for people looking to improve their fitness and not aimed at bodybuilding.

Is planet fitness worth it? : r/PlanetFitnessMembers - Reddit

Planet fitness is a value oriented gym. It's mostly for people looking to improve their fitness and not aimed at bodybuilding.

Cancel your Planet Fitness membership online - Reddit

Planet fitness is a value oriented gym. It's mostly for people looking to improve their fitness and not aimed at bodybuilding. MembersOnline • san-usa-can ADMIN MOD

Hydro massage worth it? : r/PlanetFitnessMembers - Reddit

Jan 31, 2020 · Planet fitness is a value oriented gym. It's mostly for people looking to improve their fitness and not aimed at bodybuilding.

Can anyone explain this annual fee? : r/PlanetFitnessMembers

Planet fitness is a value oriented gym. It's mostly for people looking to improve their fitness and not aimed at bodybuilding.

WHY CANT I CHANGE MY HOME club??? : ...

Planet fitness is a value oriented gym. It's mostly for people looking to improve their fitness and not aimed at bodybuilding.

Is the Black Card worth it? : r/PlanetFitnessMembers - Reddit

Apr 14, 2021 · I travel a lot, usually road tripping for construction related work, and just for the convenience of having 24x7 access to a clean shower in just about any city is 1000% worth it. ...

Workout Routines : r/PlanetFitnessMembers - Reddit

Wouldn't hurt to dial back to 4-5 days a week to let your body recover (I'm learning an extremely important part of building muscle is recovery) Im three years in and I've seen a lot of progress ...

Italian Cortina Club Inc. in Kitchener, ON N2C 2G5 - 519-8...

Italian Cortina Club Inc. located at 22 Kevco Pl, Kitchener, ON N2C 2G5 - reviews, ratings, hours, phone number, ...

Italian Cortina Club - wwhealthline.ca

Services and supports for people of a similar culture * provides assistance to newcomers

VA Impex International - 42 Kevco Place, Kitchener, ON N2...

VA Impex International is located in Kitchener, Ontario. VA Impex International is working in Other ...

VA Impex International Inc Company Profile | Kitchener, ...

Find company research, competitor information, contact details & financial data for VA Impex International Inc of ...

Italian Cortina Club, 22 Kevco Pl, Kitchener, ON N2C 2G5, CA - M...

Get more information for Italian Cortina Club in Kitchener, ON. See reviews, map, get the address, and find directions.

Explore the Heat and Glo fireplace manual for essential tips

[Back to Home](#)