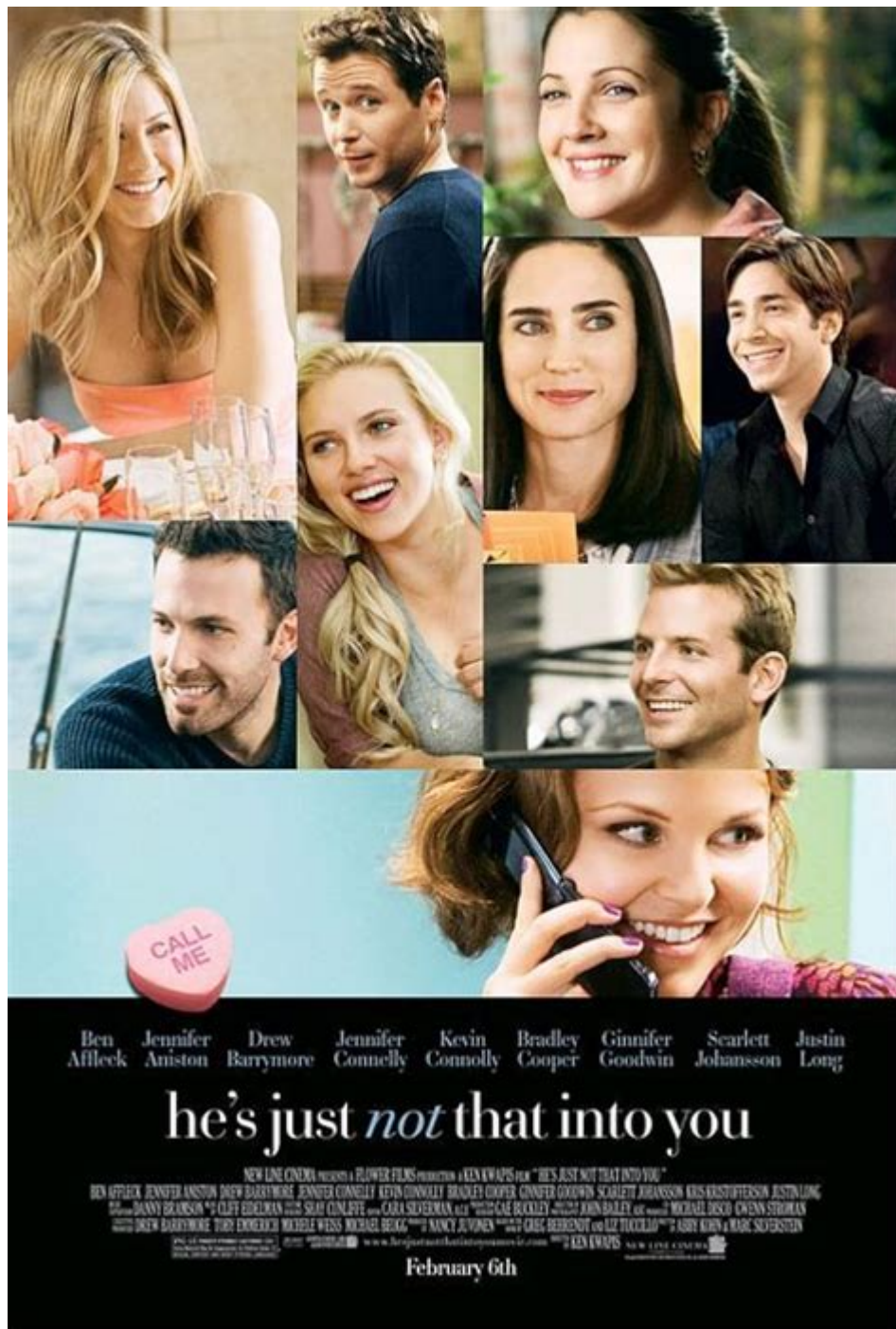


Hes Just Not Into You Movie



He's Just Not That Into You is a romantic comedy released in 2009 that explores the complexities of modern relationships through a series of interwoven stories. Directed by Ken Kwapis and based on the self-help book of the same name by Greg Behrendt and Liz Tuccillo, the film combines humor with poignant moments, providing insights into the dating world and the signals people send in romantic pursuits. This article delves into the film's themes, characters, and its cultural impact, offering a comprehensive understanding of why it resonates with audiences.

Plot Overview

The narrative of **He's Just Not That Into You** revolves around multiple characters navigating the ups and downs of love and attraction. The film is set in Baltimore and intertwines the lives of its characters, showcasing how their experiences with love are often interconnected.

The main storylines include:

- Gigi (played by Ginnifer Goodwin), a hopeless romantic who struggles to interpret the signals men send her. She often overanalyzes interactions, leading to misinterpretations of their intentions.
- Alex (played by Justin Long), a bartender who becomes Gigi's confidant, providing her with insights about men and their behavior.
- Janine (played by Jennifer Aniston) and Ben (played by Bradley Cooper), a couple dealing with the pressures of commitment and fidelity as Ben grapples with his feelings for another woman.
- Beth (played by Jennifer Aniston) and Neil (played by Justin Long), who are in a long-term relationship but face challenges due to the different perspectives on commitment.
- Anna (played by Scarlett Johansson) and Conor (played by Kevin Connolly), who navigate the complications of infidelity and emotional connection.

These characters' stories converge and overlap, creating a rich tapestry that illustrates the various facets of love, attraction, and the often painful realization that sometimes, the feeling is not mutual.

Key Themes

The film addresses several significant themes that resonate with audiences:

1. Miscommunication in Relationships

One of the central messages of **He's Just Not That Into You** is the importance of clear communication in romantic relationships. Many characters misinterpret signals or play games, causing unnecessary confusion and heartbreak. For instance, Gigi's tendency to overanalyze a man's behavior leads her to create scenarios that often do not reflect reality. This theme emphasizes the need for openness and honesty to avoid misunderstandings.

2. The Reality of Unrequited Love

The film poignantly portrays unrequited love through Gigi's experiences. Her relentless quest for love serves as a reminder that sometimes, no matter how much one may desire a relationship, the feelings may not be reciprocated. This theme encourages viewers to recognize when someone is not interested and to move on rather than cling to false hopes.

3. The Pressure of Commitment

Through the story of Janine and Ben, the film explores the societal pressures surrounding relationships and the expectations of commitment. Janine desires marriage, while Ben struggles with the idea, showcasing how differing expectations can create tension and conflict in a relationship. This theme highlights the necessity of aligning goals and desires in romantic partnerships.

4. Self-Worth and Independence

The characters' journeys ultimately lead to personal growth and self-discovery. Gigi learns to value herself beyond her relationships, while Anna grapples with the consequences of her choices. The film emphasizes the importance of self-worth and independence, encouraging viewers to seek fulfillment within themselves rather than relying solely on romantic involvement.

Character Analysis

The film features a diverse ensemble cast that brings depth to the storyline. Here's a closer look at some of the key characters:

Gigi Phillips (Ginnifer Goodwin)

Gigi is the embodiment of the film's exploration of romantic misinterpretations. Her character arc illustrates the journey from naivety to self-awareness. Initially, she is optimistic and hopeful, but as she encounters rejection, she learns to navigate the complexities of dating with a more realistic perspective.

Alex (Justin Long)

As a voice of reason, Alex serves as Gigi's mentor in understanding men's behaviors. His pragmatic approach to dating contrasts sharply with Gigi's romanticized views. Alex's character ultimately emphasizes the importance of honesty and authenticity in relationships.

Janine (Jennifer Aniston) and Ben (Bradley Cooper)

Janine and Ben's relationship exemplifies the struggle between love and commitment. Janine's desire for marriage clashes with Ben's reluctance, ultimately leading to a major turning point in their relationship. Their storyline reflects the challenges many couples face

regarding differing expectations and the sacrifices made in the pursuit of love.

Anna (Scarlett Johansson) and Conor (Kevin Connolly)

Anna and Conor's story introduces themes of infidelity and emotional betrayal. Their relationship raises questions about loyalty and the consequences of pursuing desires outside of a committed relationship. Anna's character embodies the complexity of attraction and the often messy nature of love.

Cultural Impact

Since its release, **He's Just Not That Into You** has left a lasting impact on popular culture. The film's title itself has become a phrase commonly used to convey the message that a romantic interest is not reciprocated. This blunt yet humorous approach to dating resonates with both men and women, encouraging them to face the realities of their relationships.

The film also sparked discussions about dating dynamics, shedding light on the importance of self-respect and the need to recognize and accept rejection. It has led to increased awareness about the signs of disinterest, encouraging people to engage in healthier dating practices.

Conclusion

He's Just Not That Into You is more than just a romantic comedy; it is a thoughtful exploration of the intricacies of modern relationships. Through its compelling characters and relatable themes, the film resonates with audiences of all ages, providing valuable insights into love, attraction, and self-worth. While it delivers laughs and heartfelt moments, it also serves as a reminder to embrace honesty in relationships and to recognize when it's time to move on. In a world where dating can often feel overwhelming, the film's messages encourage viewers to navigate their romantic lives with clarity and confidence.

Frequently Asked Questions

What is the main theme of 'He's Just Not That Into You'?

The main theme of 'He's Just Not That Into You' is about understanding the signs of romantic interest and recognizing when someone is not genuinely into you, emphasizing the importance of self-worth and honest communication in relationships.

Who are the main cast members of 'He's Just Not That

Into You'?

The main cast includes an ensemble of well-known actors such as Drew Barrymore, Jennifer Aniston, Ben Affleck, Scarlett Johansson, Justin Long, and Ginnifer Goodwin.

What message does the film convey regarding dating advice?

The film conveys the message that women should not waste their time on men who do not show clear interest, and it encourages them to take charge of their dating lives by recognizing red flags.

Is 'He's Just Not That Into You' based on a book?

Yes, 'He's Just Not That Into You' is based on a self-help book of the same name written by Greg Behrendt and Liz Tuccillo, which provides insights into dating and relationships.

How does the film portray male perspectives on relationships?

The film portrays male perspectives through various characters, showing that men can have different views on commitment, love, and communication, often highlighting their struggles and confusions in romantic relationships.

What are some key lessons learned from the characters' experiences in the movie?

Key lessons include the importance of recognizing when a relationship is not mutually fulfilling, the value of clear communication, and the need to prioritize one's self-respect and happiness.

How was 'He's Just Not That Into You' received by critics and audiences?

The film received mixed reviews from critics but was generally well-received by audiences for its relatable themes, humor, and strong performances, resonating with many who have experienced similar dating challenges.

Find other PDF article:

<https://soc.up.edu.ph/28-font/Book?trackid=IJa32-1337&title=history-of-nurse-practitioners.pdf>

Hes Just Not Into You Movie

HES -

HES Environment Health Safety HES EMS OHSMS

HES - ...

HES -

HES: ...

He's, his -

Feb 27, 2015 · He's his 1.He 2.he's 3.his 1.He he

Does "he's" mean both "he is" and "he has"? [closed]

Feb 23, 2012 · Yes and no. You do use "he's" for "he is" and "he has". You do use "he's got something" for "he has got something." You do not use "he's something" for "he has ...

HE -

HE 1. 10 Formalin 2. ...

HES -

Sep 8, 2024 · HES HES ...

Hi-Res Hi-res -

Hi-Res Hi-Res CD ...

he, she, it -

he she they it you me him her them my his her their your ...

HackTool:Win32/AutoKMS -

Mar 7, 2021 · HackTool Win32 AutoKMS windows defender ...

gonna gotta wanna -

gonna gotta wanna 1 gonna going to gotta got to wanna want to ...

HES -

HES Environment Health Safety HES EMS OHSMS HES ...

HES -

HES: ...

He's, his -

Feb 27, 2015 · He's his 1.He 2.he's 3.his 1.He he

Does "he's" mean both "he is" and "he has"? [closed]

Feb 23, 2012 · Yes and no. You do use "he's" for "he is" and "he has". You do use "he's got

something" for "he has got something." You do not use "he's something" for "he has ...

HE -
HE 1. 10 Formalin 2.
...

Discover the truth behind relationships in "He's Just Not Into You" movie. Uncover insights

[Back to Home](#)