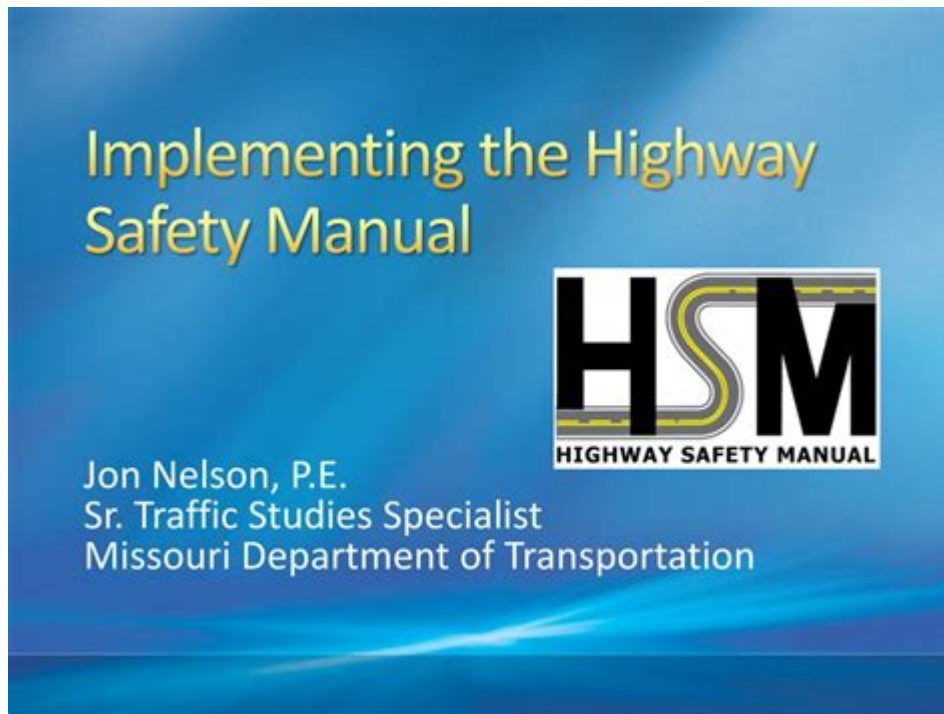


Highway Safety Manual



Highway safety manual is an essential resource that aims to provide comprehensive guidelines and best practices for enhancing safety on roadways. As vehicular traffic increases globally, the need for effective highway safety measures has never been more critical. This manual serves as a cornerstone for traffic engineers, urban planners, policymakers, and anyone involved in road safety management. It encompasses a variety of strategies, tools, and methodologies that can be applied to reduce accidents, improve traffic flow, and ensure the safety of all road users, including pedestrians, cyclists, and motorists.

Understanding the Importance of Highway Safety

Highway safety is paramount in reducing fatalities and injuries caused by traffic accidents. According to the World Health Organization, approximately 1.35 million people die each year as a result of road traffic crashes, making road safety a significant public health issue. The highway safety manual addresses this challenge through a multi-faceted approach.

Key Objectives of the Highway Safety Manual

1. Reducing Traffic Accidents: The primary goal is to minimize the occurrence of traffic accidents through evidence-based recommendations.
2. Improving Traffic Flow: Efficient road design can alleviate congestion,

leading to safer travel experiences.

3. Enhancing Road User Awareness: The manual emphasizes educating drivers and pedestrians about safe practices and their responsibilities.

4. Promoting Sustainable Practices: It also encourages the adoption of environmentally friendly strategies in road design and usage.

Components of the Highway Safety Manual

The highway safety manual consists of several components that contribute to its effectiveness. These components work together to create a holistic approach to highway safety.

Data Collection and Analysis

Accurate data is crucial for understanding traffic patterns and identifying high-risk areas. Key data sources include:

- Accident Reports: Detailed accounts of traffic incidents provide insights into common causes and contributing factors.
- Traffic Volume Studies: Monitoring traffic flow helps in identifying trends and potential issues.
- Road Condition Assessments: Regular assessments ensure that roadways are maintained to the highest safety standards.

Risk Assessment and Identification

Identifying potential hazards is a critical step in improving highway safety. This involves:

- Site Evaluations: Regular inspections of high-traffic areas can unveil design flaws or maintenance needs.
- Crash Prediction Models: Statistical models can help predict where accidents are likely to occur based on historical data.

Design and Engineering Solutions

Effective road design is fundamental in preventing accidents. The manual outlines various engineering solutions:

- Road Geometry: Proper alignment, lane width, and shoulder design can significantly impact safety.
- Traffic Control Devices: The placement of signs, signals, and markings must comply with established guidelines.

- Lighting: Adequate illumination at intersections and pedestrian crossings can reduce nighttime accidents.

Implementing Safety Strategies

The implementation of safety strategies is crucial for the success of the highway safety manual. Various stakeholders, including government agencies, private organizations, and the community, must collaborate to promote safety on the roads.

Education and Awareness Campaigns

Educating the public about safe driving practices and the rules of the road is vital. Effective campaigns can include:

- Public Service Announcements: Media campaigns that highlight the dangers of distracted driving or speeding.
- School Programs: Engaging young drivers through educational programs in schools.
- Community Workshops: Local workshops that focus on defensive driving techniques.

Law Enforcement and Regulation

Enforcement of traffic laws plays a significant role in ensuring compliance with safety regulations. Key actions include:

- Regular Checkpoints: To monitor compliance with traffic laws, such as seatbelt use and impaired driving.
- Speed Enforcement: Utilizing speed cameras and radar to deter speeding.
- Driver Licensing Programs: Ensuring that drivers are adequately trained and informed about road safety.

Community Involvement

Community engagement is crucial in promoting highway safety. Strategies may involve:

- Neighborhood Watch Programs: Encouraging residents to report unsafe driving behaviors.
- Local Safety Committees: Forming committees to address specific safety concerns within the community.
- Partnerships with Local Businesses: Collaborating with local businesses to

support safety initiatives, such as sponsoring educational events.

Evaluating and Monitoring Highway Safety Initiatives

To ensure the effectiveness of the strategies outlined in the highway safety manual, it is essential to continuously evaluate and monitor safety initiatives.

Performance Metrics

Establishing clear performance metrics helps in assessing the success of safety measures. Common metrics include:

- Accident Rates: Monitoring the number of accidents before and after implementing safety measures.
- Public Perception Surveys: Gathering feedback from the community regarding their perceptions of road safety.
- Compliance Rates: Measuring adherence to traffic laws and regulations.

Feedback Loops

Incorporating feedback into the safety strategy allows for continual improvement. This can involve:

- Community Input: Soliciting feedback from road users about their experiences and perceptions of safety measures.
- Data Review: Regularly reviewing data and adjusting strategies based on emerging trends and findings.

Future Trends in Highway Safety

As technology evolves, the future of highway safety will likely incorporate innovative solutions that enhance safety measures.

Smart Technology Integration

Emerging technologies promise to revolutionize highway safety. Some trends include:

- **Connected Vehicles:** Vehicles equipped with technology that allows them to communicate with each other and with infrastructure, potentially reducing accidents.
- **Automated Traffic Management:** Systems that use real-time data to manage traffic flow and respond to incidents quickly.
- **Advanced Driver Assistance Systems (ADAS):** Features like lane departure warnings and automatic braking systems that assist drivers in making safer decisions.

Sustainable Infrastructure Development

The push for sustainability in highway design is growing. Future initiatives may focus on:

- **Eco-Friendly Materials:** Using sustainable materials in road construction and maintenance.
- **Multi-Modal Transportation:** Designing roadways that accommodate various modes of transportation, including biking and walking, to enhance overall safety.

Conclusion

The highway safety manual serves as a vital guide for improving road safety through structured approaches and collaborative efforts. By focusing on data-driven strategies, effective design, community involvement, and the integration of new technologies, stakeholders can work together to reduce traffic accidents and enhance the safety of all road users. As we look to the future, the ongoing evaluation of safety initiatives and the adaptation of innovative solutions will be crucial in creating a safer transportation environment for everyone.

Frequently Asked Questions

What is the purpose of the Highway Safety Manual?

The Highway Safety Manual (HSM) provides a comprehensive framework for assessing safety performance and guiding data-driven decision-making for highway projects, aiming to reduce crashes and improve overall road safety.

How does the Highway Safety Manual assist in crash prediction?

The HSM offers methodologies and models that allow transportation professionals to estimate the expected number of crashes for various roadway

types and conditions, facilitating informed safety analysis and resource allocation.

What types of data are necessary for utilizing the Highway Safety Manual effectively?

Effective use of the HSM requires data on crash occurrences, roadway characteristics, traffic volumes, and environmental conditions, which helps in accurately assessing safety performance and identifying areas for improvement.

Who should use the Highway Safety Manual?

The HSM is intended for use by transportation agencies, engineers, planners, and safety professionals who are involved in highway design, operations, and safety analysis to enhance roadway safety.

What are some key strategies recommended in the Highway Safety Manual?

Key strategies in the HSM include implementing road design improvements, enhancing signage and markings, conducting regular safety audits, and promoting education and enforcement initiatives to mitigate risks.

How often is the Highway Safety Manual updated?

The Highway Safety Manual is periodically updated to incorporate new research findings, data trends, and best practices in highway safety, ensuring that it remains relevant and effective in addressing contemporary safety challenges.

Can the Highway Safety Manual be applied to all types of roadways?

Yes, the HSM is designed to be applicable to various roadway types, including urban and rural roads, highways, and local streets, making it a versatile tool for improving safety across different transportation environments.

Find other PDF article:

<https://soc.up.edu.ph/42-scope/Book?docid=krh74-8659&title=music-its-role-and-importance-in-our-lives.pdf>

Highway Safety Manual

Highway Motorway Expressway -

```
highway[0] highway[1] highway[2] highway[3] highway[4] highway[5] highway[6] highway[7] highway[8] highway[9] highway[10] highway[11] highway[12] highway[13] highway[14] highway[15] highway[16] highway[17] highway[18] highway[19] highway[20] highway[21] highway[22] highway[23] highway[24] highway[25] highway[26] highway[27] highway[28] highway[29] highway[30] highway[31] highway[32] highway[33] highway[34] highway[35] highway[36] highway[37] highway[38] highway[39] highway[40] highway[41] highway[42] highway[43] highway[44] highway[45] highway[46] highway[47] highway[48] highway[49] highway[50] highway[51] highway[52] highway[53] highway[54] highway[55] highway[56] highway[57] highway[58] highway[59] highway[60] highway[61] highway[62] highway[63] highway[64] highway[65] highway[66] highway[67] highway[68] highway[69] highway[70] highway[71] highway[72] highway[73] highway[74] highway[75] highway[76] highway[77] highway[78] highway[79] highway[80] highway[81] highway[82] highway[83] highway[84] highway[85] highway[86] highway[87] highway[88] highway[89] highway[90] highway[91] highway[92] highway[93] highway[94] highway[95] highway[96] highway[97] highway[98] highway[99]
```

...

freeway.highway.expressway......
freeway.highway.expressway..... 1 freeway..... 2 highway.....
..... 3 expressway ...

freeway.highway.expressway......
Sep 21, 2024 · Freeway Highway Expressway..... Freeway Highway Expressway.....
..... 1. Freeway ...

.....highway freeway..... - ..
..Highway Meaning 1: A main road for traveling long distances, especially one
connecting and going through cities and towns. (especially North ...

.....**highway** express_.....
.....highway express .. 1 ..

..... highway - ..
..... highway 101 280 highway..... (65-70).....
.....

.....Highway net.....Residual Network..... ...
.....Highway net.....Residual Network..... Highway net.....Residual
Network..... ...

.....highway toll....._.....
1. She ended up buying a prepaid highway toll card for her husband, a gift that made me wince
when I read about it.

Hotel California
Hotel CaliforniaHotel California.....Don Henley Don Felder Glenn Frey Don Henley
Don FelderOn a dark desert highway, cool wind in my ...

expressway highway..... -
Jul 23, 2024 · expressway highway.....Expressway Highway.....Expressway highway.....
.....

.....Highway Motorway Expressway..... - ..
highway.....

freeway.highway.expressway......
freeway.highway.expressway..... 1 freeway..... 2 highway.....
.....

freeway.highway.expressway......
Sep 21, 2024 · Freeway Highway Expressway..... Freeway Highway Expressway.....
.....

.....highway freeway..... - ..
..Highway Meaning 1: A main road for traveling long distances, especially one
connecting and going through cities ...

highway express ...
highway express 1

Explore essential guidelines in our comprehensive Highway Safety Manual. Enhance road safety knowledge and practices. Learn more to make our roads safer today!

[Back to Home](#)