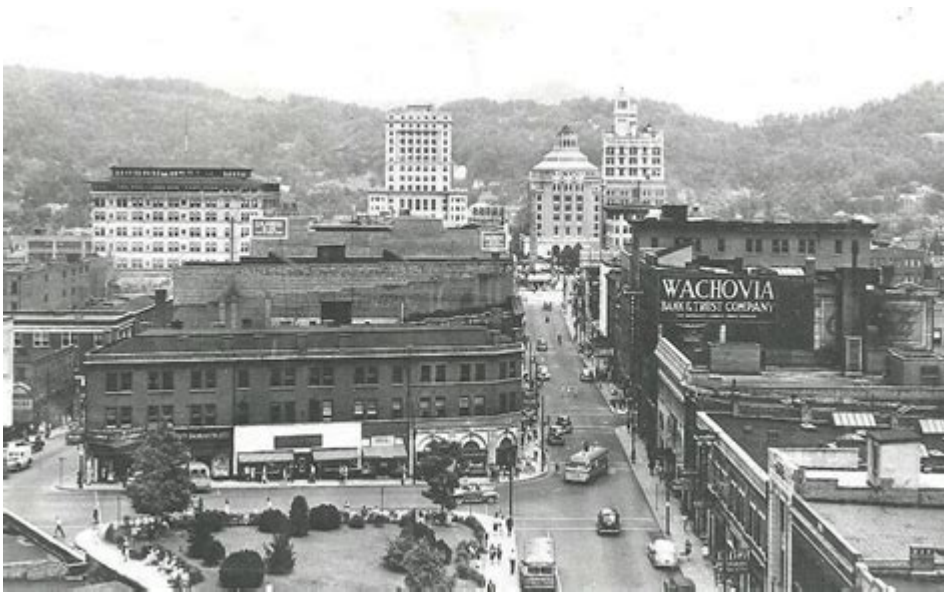


# History Of Asheville Nc



## History of Asheville, NC

Asheville, North Carolina, is a city rich in history, culture, and scenic beauty. Nestled in the Blue Ridge Mountains, it has attracted settlers, artists, and tourists for centuries. The story of Asheville is one of transformation, resilience, and a deep connection to the land. From its early days as a Cherokee settlement to its modern status as a vibrant city known for its arts scene and historic architecture, Asheville's history reflects the broader narrative of the American South.

## Early Inhabitants

The region that is now Asheville was originally inhabited by the Cherokee people, who thrived in the lush landscape of the Southern Appalachians. They utilized the area's natural resources for hunting, fishing, and agriculture. The Cherokee established villages and trade routes, creating a rich cultural tapestry that would later influence the region's history.

## European Exploration and Settlement

In the 18th century, European settlers began to arrive in western North Carolina. Notable figures such as William McDowell, a Scottish immigrant, were among the first to explore and settle in the area. The establishment of the Watauga Association in the 1770s marked one of the first forms of self-governance by European settlers, setting the stage for future settlements.

The town of Asheville was officially founded in 1797 when it was named after North Carolina's Governor Samuel Ashe. The area quickly grew in prominence due to its strategic location along the Buncombe Turnpike, which facilitated trade and travel through the mountains.

# **The 19th Century: Growth and Development**

Asheville's growth accelerated in the early 19th century, particularly with the arrival of the railroad in the 1880s. This development transformed the city into a major economic hub, attracting tourists and residents alike.

## **Railroad Expansion**

The arrival of the railroad in 1880 was a turning point for Asheville. It allowed for easier access to the region, leading to an influx of visitors, including wealthy industrialists from the North. This increase in population and commerce contributed to the city's rapid development.

Key developments during this time included:

- The construction of grand hotels, such as the Battery Park Hotel and the Grove Park Inn.
- The establishment of diverse businesses, including textile mills and manufacturing plants.
- The growth of the local economy, which was bolstered by agriculture, including the cultivation of tobacco and corn.

## **Cultural Flourishing**

The late 19th and early 20th centuries saw Asheville emerge as a cultural center. The city became known for its arts community, with many artists and writers drawn to its stunning landscapes and vibrant atmosphere.

Notable figures who contributed to Asheville's cultural legacy during this period include:

- Thomas Wolfe, a prominent author who depicted the city in his works.
- The establishment of the Asheville Arts and Crafts movement, which celebrated local artisans and craftspeople.

# **The 20th Century: Challenges and Resilience**

The 20th century brought both challenges and opportunities for Asheville. The Great Depression and World War II had significant impacts on the city's economy and population. However, Asheville's resilience shone through as the community adapted to changing circumstances.

## **The Great Depression**

Like many cities across the United States, Asheville was hit hard by the Great Depression. Many businesses closed, and unemployment rose dramatically. However, the city leveraged its natural beauty and historic significance to promote tourism as a means of economic recovery.

- The establishment of the Blue Ridge Parkway in the 1930s provided a scenic route that attracted visitors to the area.
- The construction of the Biltmore Estate, a grand mansion built by George Washington Vanderbilt II, became a major tourist attraction and helped stimulate the local economy.

## **World War II and Post-War Growth**

World War II brought new economic opportunities to Asheville, with the establishment of military bases and defense-related industries in the region. After the war, the city experienced a population boom and a renewed sense of optimism.

- The post-war era saw a focus on urban renewal projects, including the revitalization of downtown Asheville.
- The construction of new schools, hospitals, and infrastructure contributed to the city's growth.

## **Modern Era: Revitalization and Cultural Renaissance**

In recent decades, Asheville has undergone a significant transformation, evolving into a vibrant city known for its arts, culture, and outdoor recreation. The revitalization of downtown Asheville has played a crucial role in this renaissance.

### **Downtown Revitalization**

Starting in the late 20th century, city planners and community leaders began to focus on revitalizing downtown Asheville. This effort included:

- Restoring historic buildings and promoting local businesses.
- Creating pedestrian-friendly spaces that encourage community engagement.
- Hosting festivals and events that celebrate the city's diverse cultural heritage.

As a result, Asheville's downtown area has become a bustling hub of activity, attracting both locals and tourists.

### **Cultural and Artistic Hub**

Asheville is now recognized as a cultural and artistic hub, with a vibrant arts scene that encompasses music, visual arts, and culinary experiences. The city hosts numerous festivals, galleries, and theaters that showcase local talent.

Key cultural highlights include:

- The Asheville Art Museum, which features contemporary art and regional artists.
- The Montford Park Players, one of the oldest community theater groups in the country.

- The annual LEAF Festival, which celebrates music, arts, and cultural heritage.

## **Conclusion**

The history of Asheville, NC, is a testament to the resilience and creativity of its people. From its early days as a Cherokee settlement to its modern identity as a cultural and artistic haven, Asheville has continually evolved while maintaining a strong connection to its roots. The city's rich history, combined with its stunning natural beauty, ensures that Asheville will continue to be a destination for generations to come. As it embraces the future, Asheville remains committed to preserving its unique heritage while fostering innovation and creativity.

## **Frequently Asked Questions**

### **What year was Asheville, NC founded?**

Asheville was founded in 1797.

### **What significant event in the 19th century helped Asheville grow?**

The arrival of the railroad in 1880 was a significant event that contributed to Asheville's growth.

### **How did the Arts and Crafts movement influence Asheville?**

The Arts and Crafts movement influenced Asheville by inspiring local artisans to create unique handcrafted items, leading to the establishment of a vibrant arts community.

### **What is the significance of the Biltmore Estate in Asheville's history?**

The Biltmore Estate, built by George Washington Vanderbilt II in the late 19th century, is significant as it is the largest privately-owned home in the U.S. and a major tourist attraction.

### **What role did Asheville play during the Civil War?**

During the Civil War, Asheville served as a supply center for the Confederacy and was the site of several skirmishes.

### **How did the Great Depression affect Asheville?**

The Great Depression had a severe impact on Asheville, leading to economic decline and the abandonment of many historic buildings, although it later spurred preservation efforts in the area.

Find other PDF article:

<https://soc.up.edu.ph/50-draft/files?docid=GZg76-6060&title=reeses-peanut-butter-cup-history.pdf>

# History Of Asheville Nc

## **Check or delete your Chrome browsing history**

Your History lists the pages you've visited on Chrome in the last 90 days. It doesn't store: If you're signed in to Chrome and sync your history, then your History also shows pages you've visited on your other devices. If you don't want Chrome to save your browsing history, you can browse in Incognito mode.

## **Delete your activity - Computer - Google Account Help**

Delete your activity automatically You can automatically delete some of the activity in your Google Account. On your computer, go to your Google Account. At the left, click Data & privacy. Under "History settings," click an activity or history setting you want to auto-delete. Click Auto-delete. Click the button for how long you want to keep your activity Next Confirm to save your choice. ...

## **Access & control activity in your account - Google Help**

Under "History settings," click My Activity. To access your activity: Browse your activity, organized by day and time. To find specific activity, at the top, use the search bar and filters. Manage your activity Get details about activity To view details about an item: At the bottom of ...

history herstory -

From Middle English, from Old French estoire, estorie ("chronicle, history, story") (French histoire), from Latin historia, from Ancient Greek ἱστορία (historía, "learning through research, narration of what is learned"), from ἱστορέω (historéō, "to learn through research, to ...

## **Find your Google purchase history - Google Pay Help**

Find your Google purchase history You can get a list of your charges and transactions for Google purchases and subscriptions. Find transactions for Google products Go to payments.google.com. Click Activity. To get more info, select a transaction.

## Manage your Google Maps Timeline

Timeline helps you go back in time and remember where you've been by automatically saving your visits and routes to your Google Maps Timeline on each of your signed-in devices. You can edit your Googl

## **View or delete your YouTube search history - Google Help**

You can manage your search history by deleting individual searches or clearing or pausing search history. Learn more about your data in YouTube and managing your YouTube activity.

## *Update billing and payments for YouTube TV*

If you signed up for YouTube TV through a mobile carrier or internet provider, you'll be billed by them. Learn more about how integrated billing works. To review your payment history, follow these instructions to find your purchases, reservations & subscriptions.

## Find & manage your recent chats in Gemini Apps

On your computer, go to gemini.google.com. If your chats are hidden, at the top, click Menu . On the side panel, find your pinned and recent chats.

edge ...

History WebAssistDatabase db

Navicat 数据库管理工具 数据库管理工具 数据库管理工具 数据库管理工具

*Check or delete your Chrome browsing history*

Your History lists the pages you've visited on Chrome in the last 90 days. It doesn't store: If you're signed in to Chrome and sync your history, then your History also shows pages you've visited on your other devices. If you don't want Chrome to save your browsing history, you can browse in Incognito mode.

Delete your activity - Computer - Google Account Help

Delete your activity automatically You can automatically delete some of the activity in your Google Account. On your computer, go to your Google Account. At the left, click Data & privacy. Under "History settings," click an activity or history setting you want to auto-delete. Click Auto-delete. Click the button for how long you want to keep your activity Next Confirm to save your choice. ...

## Access & control activity in your account - Google Help

Under "History settings," click My Activity. To access your activity: Browse your activity, organized by day and time. To find specific activity, at the top, use the search bar and filters. Manage your activity Get details about activity To view details about an item: At ...

history herstory -

From Middle English, from Old French *estoire*, *estorie* (“chronicle, history, story”) (French *histoire*), from Latin *historia*, from Ancient Greek *ιστορία* (*historía*, “learning through research, narration of what is learned”), from *ιστορέω* (*historéō*, “to learn through research, to ...

## Find your Google purchase history - Google Pay Help

Find your Google purchase history You can get a list of your charges and transactions for Google purchases and subscriptions. Find transactions for Google products Go to [payments.google.com](https://payments.google.com). Click Activity. To get more info, select a transaction.

## Manage your Google Maps Timeline

Timeline helps you go back in time and remember where you've been by automatically saving your visits and routes to your Google Maps Timeline on each of your signed-in devices. You can edit your Google

[View or delete your YouTube search history - Google Help](#)

You can manage your search history by deleting individual searches or clearing or pausing search history. [Learn more about your data in YouTube and managing your YouTube activity.](#)

## Update billing and payments for YouTube TV

If you signed up for YouTube TV through a mobile carrier or internet provider, you'll be billed by them. Learn more about how integrated billing works. To review your payment history, follow these instructions to find your purchases, reservations & subscriptions.

## Find & manage your recent chats in Gemini Apps

On your computer, go to [gemini.google.com](https://gemini.google.com). If your chats are hidden, at the top, click Menu . On the side panel, find your pinned and recent chats.

```
edge[ ] [ ] [ ] [ ] [ ] [ ] [ ] [ ] [ ] [ ] [ ] [ ] [ ] [ ] [ ] [ ] ...
```

History ☐ WebAssistDatabase ☐ db ☐  
Navicat ☐

Explore the rich history of Asheville

[Back to Home](#)