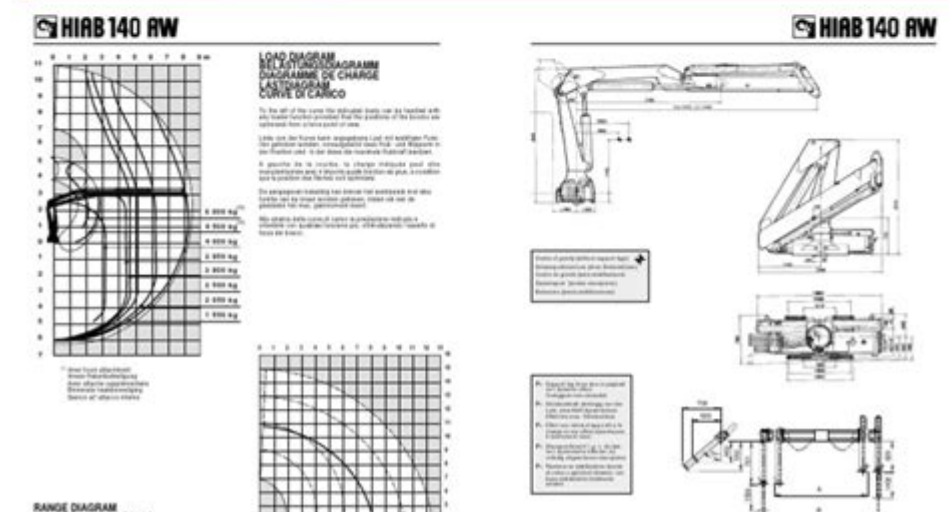
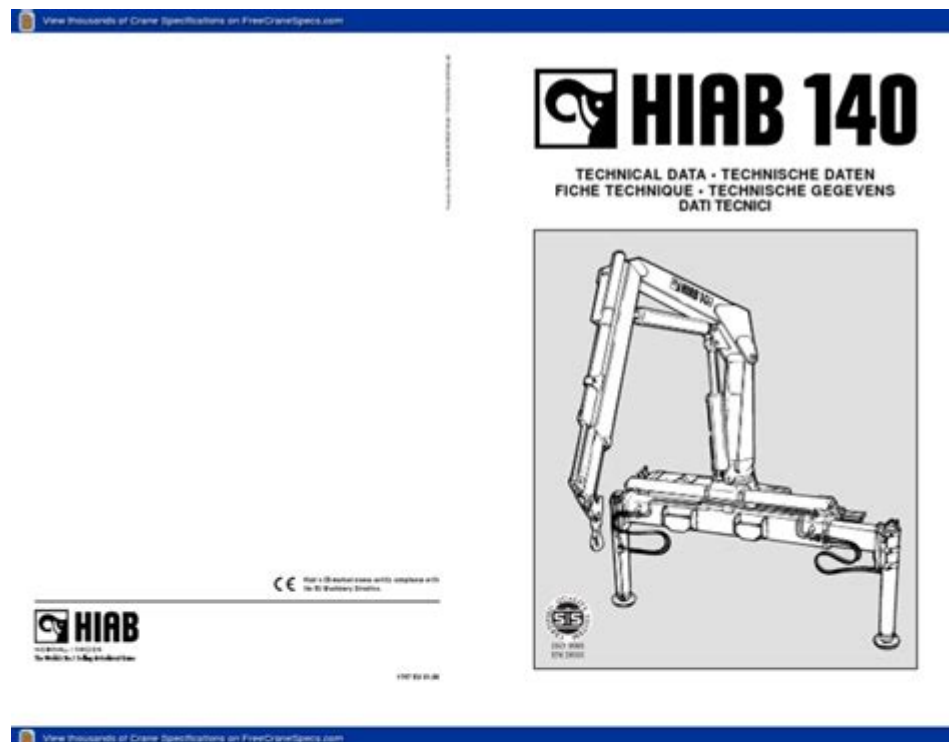


# Hiab 140 Crane Service Manual



**Hiab 140 crane service manual** is an essential resource for operators and maintenance personnel who work with this versatile piece of equipment. Designed to provide detailed information on the operation, maintenance, and troubleshooting of the Hiab 140 crane, this manual plays a crucial role in ensuring the crane operates efficiently and safely. In this article, we will explore the features of the Hiab 140 crane, the importance of the service manual, and the key areas covered within it, along with maintenance tips and troubleshooting advice.

## Overview of the Hiab 140 Crane

The Hiab 140 crane is a hydraulic loader crane designed for various lifting and loading tasks. Its robust design and powerful functionality make it a popular choice in construction, transportation, and

logistics industries.

## **Key Features of the Hiab 140 Crane**

1. **Hydraulic System:** The Hiab 140 crane is equipped with a state-of-the-art hydraulic system that provides smooth operation and precise control.
2. **Versatile Boom:** With a telescopic boom, the crane can reach different heights and provide extensive lifting capabilities.
3. **Stability and Safety:** The crane is designed with stability in mind, featuring outriggers that extend for support during operation.
4. **User-Friendly Controls:** The crane comes with intuitive controls that make operation straightforward, even for those new to crane handling.
5. **Durable Construction:** Built with high-quality materials, the Hiab 140 crane is designed to withstand the rigors of heavy use.

## **The Importance of the Hiab 140 Crane Service Manual**

A service manual is critical for anyone who operates or maintains the Hiab 140 crane. It provides comprehensive details on various aspects of the crane, including:

- Operation guidelines
- Maintenance schedules
- Troubleshooting procedures
- Safety precautions

Having access to the Hiab 140 crane service manual ensures that operators can maximize the crane's performance while minimizing risks and downtime.

## **Contents of the Hiab 140 Crane Service Manual**

The Hiab 140 crane service manual contains several sections, each focusing on different aspects of crane operation and maintenance. Below are some of the key contents you can expect to find:

### **1. Safety Information**

Safety is paramount when operating any crane. The service manual includes:

- General safety guidelines
- Personal protective equipment (PPE) recommendations
- Emergency procedures
- Load capacity limits

## **2. Operating Instructions**

This section covers the step-by-step procedures for operating the Hiab 140 crane. Key topics include:

- Starting and stopping the crane
- Boom extension and retraction
- Load handling techniques
- Control functions

## **3. Maintenance Guidelines**

Regular maintenance is essential for ensuring the longevity of the Hiab 140 crane. The manual outlines:

- Daily, weekly, and monthly maintenance tasks
- Lubrication points and schedules
- Inspection checklists
- Replacement parts and intervals

## **4. Troubleshooting**

Even with regular maintenance, issues may arise. The troubleshooting section helps operators diagnose problems by providing:

- Common issues and their symptoms
- Step-by-step troubleshooting procedures
- Repair instructions

## **5. Technical Specifications**

Understanding the technical specifications of the Hiab 140 crane is crucial for proper operation and maintenance. This section typically includes:

- Dimensions and weight
- Hydraulic system specifications
- Load capacities and reach

## **Maintenance Tips for the Hiab 140 Crane**

To keep the Hiab 140 crane in optimal condition, consider the following maintenance tips:

- **Regular Inspections:** Conduct daily inspections before use to check for any visible wear or damage.
- **Lubrication:** Follow the lubrication schedule outlined in the service manual to reduce friction and wear on moving parts.
- **Hydraulic Fluid Levels:** Regularly check and maintain hydraulic fluid levels to ensure efficient operation.
- **Electrical System Check:** Inspect the electrical system for any signs of wear or damage, and ensure all connections are secure.
- **Load Testing:** Periodically perform load tests to verify that the crane can handle its rated load capacity safely.

## Troubleshooting Common Issues

While the Hiab 140 crane is designed for reliability, operators may encounter issues from time to time. Here are some common problems and their potential solutions:

### 1. Crane Won't Start

- Check the battery: Ensure the battery is charged and connections are secure.
- Inspect fuses: Look for blown fuses in the electrical system.

### 2. Hydraulic System Failure

- Check fluid levels: Low hydraulic fluid can lead to system failure.
- Look for leaks: Inspect hoses and connections for any signs of leaks.

### 3. Inconsistent Boom Movement

- Examine hydraulic lines: Ensure there are no blockages or kinks in the hydraulic lines.
- Check control valves: Malfunctioning control valves can cause erratic boom movement.

## Conclusion

The **Hiab 140 crane service manual** is an invaluable resource for operators and maintenance personnel alike. By understanding its contents and following the guidelines for operation and

maintenance, users can ensure the crane remains in excellent working condition, enhancing productivity and safety on the job site. Regular maintenance, timely troubleshooting, and adherence to safety protocols are paramount in extending the lifespan of the Hiab 140 crane and optimizing its performance. Whether you're a seasoned operator or new to crane handling, the service manual is your best ally in achieving operational excellence.

## **Frequently Asked Questions**

### **What is the primary function of the HIAB 140 crane?**

The HIAB 140 crane is designed for loading and unloading heavy materials, making it ideal for construction, logistics, and transportation industries.

### **Where can I find the service manual for the HIAB 140 crane?**

The service manual for the HIAB 140 crane can usually be found on the official HIAB website, through authorized dealers, or by contacting HIAB customer support.

### **What are the key maintenance tasks outlined in the HIAB 140 crane service manual?**

Key maintenance tasks include regular lubrication, inspection of hydraulic systems, checking for wear on cables and boom, and ensuring all safety features are operational.

### **How often should I refer to the HIAB 140 crane service manual?**

It is recommended to refer to the HIAB 140 crane service manual before performing any maintenance, troubleshooting issues, or conducting safety checks.

### **What safety precautions are mentioned in the HIAB 140 crane service manual?**

Safety precautions include wearing appropriate personal protective equipment (PPE), ensuring the crane is on stable ground, and following load capacity limits.

### **Can I download the HIAB 140 crane service manual online?**

Yes, the HIAB 140 crane service manual can often be downloaded from the HIAB website or other authorized online platforms, but ensure to have the correct model specifications.

Find other PDF article:

<https://soc.up.edu.ph/43-block/Book?trackid=Ojn88-3757&title=next-step-guided-reading-assessment.pdf>

Hiab is the world's leading provider of on-road load handling equipment, intelligent services, smart and connected solutions.

Hiab is the world's leading provider of on-road load handling equipment, intelligent services, smart and connected solutions.

**HIAB USA | Best Load Handling Equipment | Hiab**

World class equipment built with strong brands HIAB is the world's leading provider of on-road load handling equipment, intelligent services, smart and connected solutions.

**Hiab history & strong brands | Hiab About Us | Hiab**

Since 1944, no less than half a million HIAB loader cranes have been delivered to customers in more than 120 countries. Today, we offer a broad selection of HIAB loader cranes with broad ...

Loader Cranes with Superior Performance | Products | Hiab

Make your HIAB loader crane your own with the vast range of tools and add-ons that have been specifically designed to meet the highest safety, quality and performance standards.

## Top-Quality HIAB Loader Cranes for Efficient Lifting | Our Brands

Tailor a HIAB loader crane to meet the specific demands of your industry. Choose from a wide selection of loader cranes to give you the flexibility to handle the heaviest loads safely and ...

**Hiab Suomi | Hiab**

Hiab on maailman johtava tien kuormankäsittelylaitteiden, älykkäiden palvelujen, älykkäiden ja yhdistettyjen ratkaisujen toimittaja.

□□□□□□ | *Hiab*

Hiab

## Hiab Webshop | Hiab Parts &amp; Accessories Online

Hiab Webshop is a modern and easy to use channel to purchase spare parts and accessories for your equipment. We provide fast and reliable deliveries so you can keep your operations flowing.

*Hiab business & strategy | Hiab About Us | Hiab*

Hiab delivers innovative load handling solutions, driving efficiency and sustainability through advanced technology and customer-centric services.

Unlock the full potential of your HIAB 140 crane with our comprehensive service manual. Learn more about maintenance

[Back to Home](#)