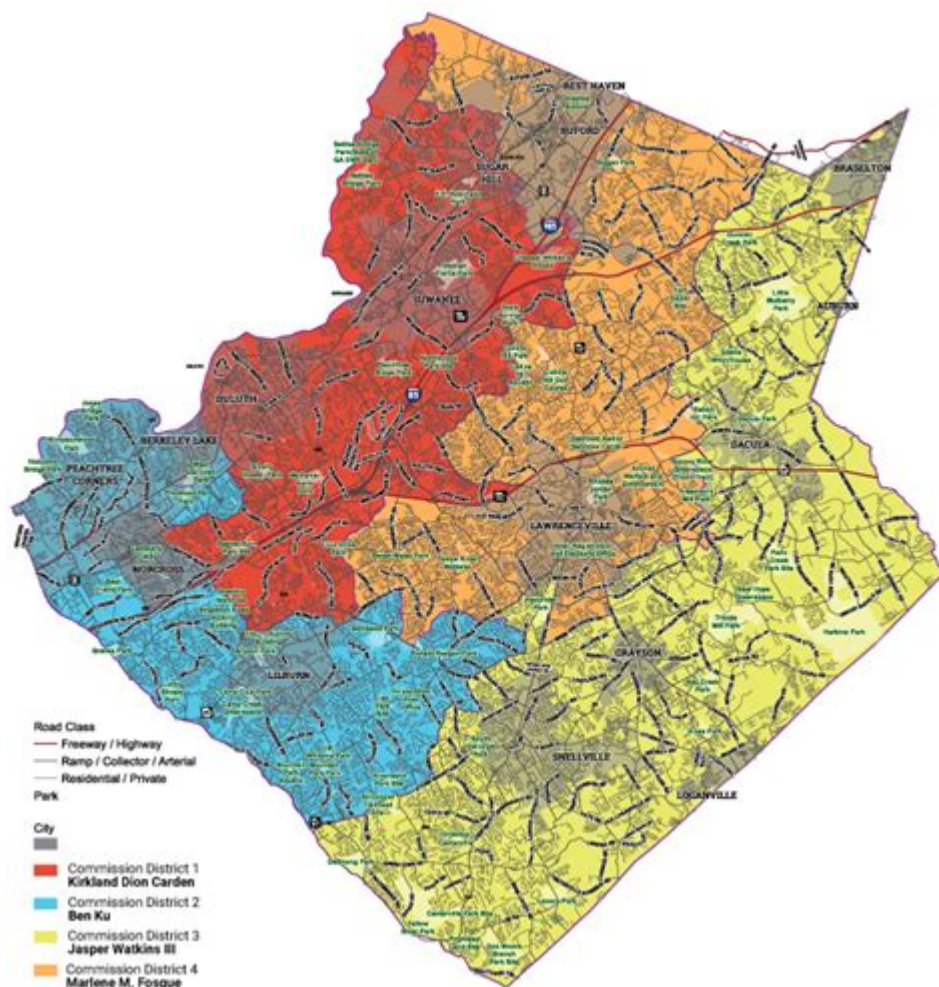


# Gwinnett County Curriculum Map



Gwinnett County Curriculum Map serves as a comprehensive framework designed to guide educators in delivering consistent and high-quality instruction across the district. This curriculum map is vital for aligning educational objectives with state standards, ensuring that all students receive equitable and effective learning experiences. In this article, we will explore the structure, components, and significance of the Gwinnett County Curriculum Map, along with its impact on teaching and learning processes.

## Understanding the Gwinnett County Curriculum Map

The Gwinnett County Curriculum Map is a strategic tool that outlines the educational goals and learning outcomes for various subjects and grade levels throughout the district. It provides a clear and organized approach for teachers to plan their lessons and assess student progress effectively.

## **Purpose of the Curriculum Map**

The primary purposes of the Gwinnett County Curriculum Map include:

1. **Alignment with Standards:** Ensures that the curriculum meets state and national educational standards, fostering a consistent learning experience.
2. **Guidance for Instruction:** Offers teachers a structured framework to plan lessons, assessments, and instructional strategies.
3. **Assessment and Evaluation:** Provides guidelines for evaluating student progress and determining mastery of learning objectives.
4. **Resource Allocation:** Helps schools and educators identify necessary resources and materials for effective teaching.
5. **Professional Development:** Serves as a basis for ongoing teacher training and collaboration, enhancing instructional practices.

## **Components of the Gwinnett County Curriculum Map**

The Gwinnett County Curriculum Map is composed of various elements that work together to provide a comprehensive educational framework. These components include:

### **1. Curriculum Framework**

The curriculum framework outlines the essential knowledge and skills students should acquire at each grade level. It is organized by subject areas such as:

- Language Arts
- Mathematics
- Science
- Social Studies
- Fine Arts
- Physical Education

Each subject area includes detailed descriptions of units of study, learning objectives, and the skills students are expected to develop.

### **2. Learning Outcomes**

Learning outcomes are specific statements that describe what students should know and be able to do by the end of a unit or course. These outcomes are measurable and guide the assessment process. For instance, in mathematics, a learning outcome might state that a student should be able to solve multi-step word problems using addition and subtraction.

### **3. Assessment Strategies**

Assessment strategies outline how teachers will evaluate student learning. This may include:

- Formative assessments (quizzes, classwork, discussions)
- Summative assessments (tests, projects, presentations)
- Performance assessments (demonstrations, portfolios)

The curriculum map provides guidance on how to create and implement these assessments effectively.

## **4. Instructional Strategies**

The curriculum map offers various instructional strategies that teachers can implement to engage students and facilitate learning. These strategies may include:

- Differentiated instruction to meet diverse learning needs
- Cooperative learning activities to foster collaboration
- Technology integration to enhance learning experiences
- Inquiry-based learning to promote critical thinking

## **Benefits of the Gwinnett County Curriculum Map**

The Gwinnett County Curriculum Map offers numerous benefits to students, educators, and the broader educational community.

### **1. Enhanced Student Learning**

By providing a clear and structured approach to instruction, the curriculum map helps ensure that students receive a well-rounded education that promotes critical thinking, problem-solving, and creativity. The alignment with state standards guarantees that students are prepared for future academic challenges and assessments.

### **2. Consistency Across Classrooms**

The curriculum map promotes consistency in teaching across the district. All educators have access to the same resources and guidelines, which helps ensure that students in different classrooms are receiving comparable instruction and support.

### **3. Support for Teachers**

Teachers benefit from the Gwinnett County Curriculum Map as it provides them with a roadmap for planning their lessons. With clear learning objectives and assessment strategies, educators can focus on delivering effective instruction rather than spending excessive time on lesson planning.

## **4. Data-Driven Decision Making**

The curriculum map facilitates data-driven decision-making by providing educators with assessment data to analyze student performance. Educators can identify areas where students excel or struggle, allowing for targeted interventions and adjustments to instruction as needed.

## **Implementing the Gwinnett County Curriculum Map**

Implementing the Gwinnett County Curriculum Map requires collaboration among educators, school administrators, and district leaders. Here are key steps for successful implementation:

### **1. Professional Development**

Ongoing professional development is crucial for teachers to understand the curriculum map fully. Training sessions can focus on:

- Navigating the curriculum map
- Effective lesson planning
- Utilizing assessment data for instructional improvements

### **2. Collaboration Among Educators**

Encouraging collaboration among teachers fosters a community of practice where educators can share ideas, resources, and successful strategies. This collaboration can occur through:

- Team meetings
- Co-planning sessions
- Peer observations

### **3. Continuous Review and Improvement**

The curriculum map should be a living document, regularly reviewed and updated based on feedback from educators and assessment results. Continuous improvement ensures that the curriculum remains relevant and effective in meeting the needs of students.

## **Challenges in Utilizing the Curriculum Map**

While the Gwinnett County Curriculum Map offers numerous benefits, challenges may arise during its implementation:

## **1. Resistance to Change**

Some educators may be hesitant to adopt new teaching strategies or curriculum changes. It is essential to provide support and demonstrate the value of the curriculum map in improving student outcomes.

## **2. Resource Limitations**

Schools may face limitations in resources, such as access to technology or materials needed for effective instruction. Ensuring equitable access to resources is crucial for successful implementation.

## **3. Balancing Flexibility and Structure**

While the curriculum map provides a structured framework, teachers should also have the flexibility to adapt lessons to meet the unique needs of their students. Finding the right balance is essential for effective teaching.

## **Conclusion**

The Gwinnett County Curriculum Map is an invaluable tool that enhances the educational experience for students and educators alike. By providing a structured framework for instruction, assessment, and professional development, it ensures that all students have access to high-quality education aligned with state standards. Through collaboration, continuous improvement, and a commitment to student success, the Gwinnett County Curriculum Map will continue to play a vital role in shaping the future of education in the district. As educators embrace this curriculum map, they pave the way for a more effective, equitable, and engaging learning environment for all students.

## **Frequently Asked Questions**

### **What is the Gwinnett County curriculum map?**

The Gwinnett County curriculum map is a structured framework that outlines the curriculum and learning objectives for each grade level and subject area within the Gwinnett County Public Schools system.

### **How can parents access the Gwinnett County curriculum map?**

Parents can access the Gwinnett County curriculum map through the Gwinnett County Public Schools website, where they can find resources and links to the curriculum documents.

## **What subjects are covered in the Gwinnett County curriculum map?**

The Gwinnett County curriculum map covers a wide range of subjects including English Language Arts, Mathematics, Science, Social Studies, and various electives.

## **How often is the Gwinnett County curriculum map updated?**

The Gwinnett County curriculum map is typically reviewed and updated annually to ensure alignment with state standards and educational best practices.

## **What is the purpose of the Gwinnett County curriculum map?**

The purpose of the Gwinnett County curriculum map is to provide a clear and organized outline of what students are expected to learn at each grade level, ensuring consistency and comprehensiveness in education.

## **Are there resources for teachers in the Gwinnett County curriculum map?**

Yes, the Gwinnett County curriculum map includes resources for teachers such as lesson plans, assessment tools, and instructional strategies to support effective teaching.

## **How does the Gwinnett County curriculum map support student learning?**

The Gwinnett County curriculum map supports student learning by clearly defining learning goals and expectations, providing a roadmap for educators to guide instruction and assess student progress.

## **Can the Gwinnett County curriculum map be used for educational planning?**

Yes, the Gwinnett County curriculum map can be used for educational planning by helping educators and administrators align their teaching strategies and resources with the established curriculum.

## **What role do standards play in the Gwinnett County curriculum map?**

Standards play a crucial role in the Gwinnett County curriculum map as they provide the benchmarks for what students should know and be able to do at each grade level.

## **How does the Gwinnett County curriculum map accommodate diverse learners?**

The Gwinnett County curriculum map accommodates diverse learners by incorporating differentiated instruction strategies and resources that address various learning styles and needs.

<https://soc.up.edu.ph/06-link/pdf?trackid=bEf65-5277&title=anjing-aj-618a-manual.pdf>

## Ayuda de YouTube

[Download the YouTube app - Android - YouTube Help - Google Help](#)

## YouTube Help

Assistir transmissões ao vivo - Computador - Ajuda do YouTube

□□□□□ □□□□□ YouTube - □□□□□ Android - □□□□□ YouTube

Centro de Ayuda de la aplicación YouTube Studio - Google Help

**Ajuda do YouTube - Google Help**

**Navigate YouTube Studio - Computer - YouTube Studio App Help ...**

## YouTube Partner Program overview & eligibility

**Descargar la aplicación YouTube - Android - Ayuda de YouTube**

**Gifted Talented Education - Texas Education Agency**

Gifted Talented Education Welcome to the gifted/talented (G/T) education webpage. The state's goal for G/T students is to ensure that students who participate in G/T services demonstrate ...

*Mark Twain School For The Talented And Gifted - Texas Public Schools ...*

Mark Twain School For The Talented And Gifted is an elementary school in Dallas, TX, in the Dallas ISD school district. As of the 2023-2024 school year, it had 241 students. 47.7% of ...

### **Best Magnet Public Schools in Texas (2025)**

View the 2025 top ranked magnet public schools in Texas. Find rankings, test scores, reviews and more. Read about top ranked schools like: Carnegie Vanguard High School, Martha & Josh ...

### **Texas Association for the Gifted & Talented**

Texas Education Code The Texas Education Code, all laws and rules passed by the state legislature, addresses the definition of gifted and talented students, their identification, and ...

### **Gifted & Talented / What is the Gifted and Talented Program?**

The Gifted and Talented Program is designed for G/T students in grades K-12 who excel in general intellectual ability in combination with creative/productive thinking and/or leadership ...

*School For The Talented And Gifted - Texas Public Schools ...*

Texas Public Schools: Use our database to learn more about the state's districts and public schools, including hundreds of charter schools and alternative campuses. You can easily ...

*Texas State Plan for the Education of Gifted Talented Students*

School districts shall ensure that student assessment and services for gifted/talented students comply with accountability standards defined in the Texas State Plan for the Education of the ...

### **Texas Education Agency and Commissioner's Advisory Council Gifted ...**

To meet gifted and talented education accountability standards, all populations in a school district should have access to assessment and, if needed, gifted and talented services. Equitable ...

*Leadership and Faculty - Anderson Private School for the Gifted ...*

His dissertation resulted in a study of programs for the gifted and talented in Texas public schools. Following a report to the State Board of Education on its findings, the study was utilized in ...

*Texas State Plan for The Education of Gifted/Talented Students*

1.2 Gifted/talented education policies and procedures are reviewed and recommendations for improvement are made by an advisory group of community members, parents of ...

Explore the Gwinnett County curriculum map to enhance your educational journey. Discover how it aligns with standards and supports student success. Learn more!

[Back to Home](#)