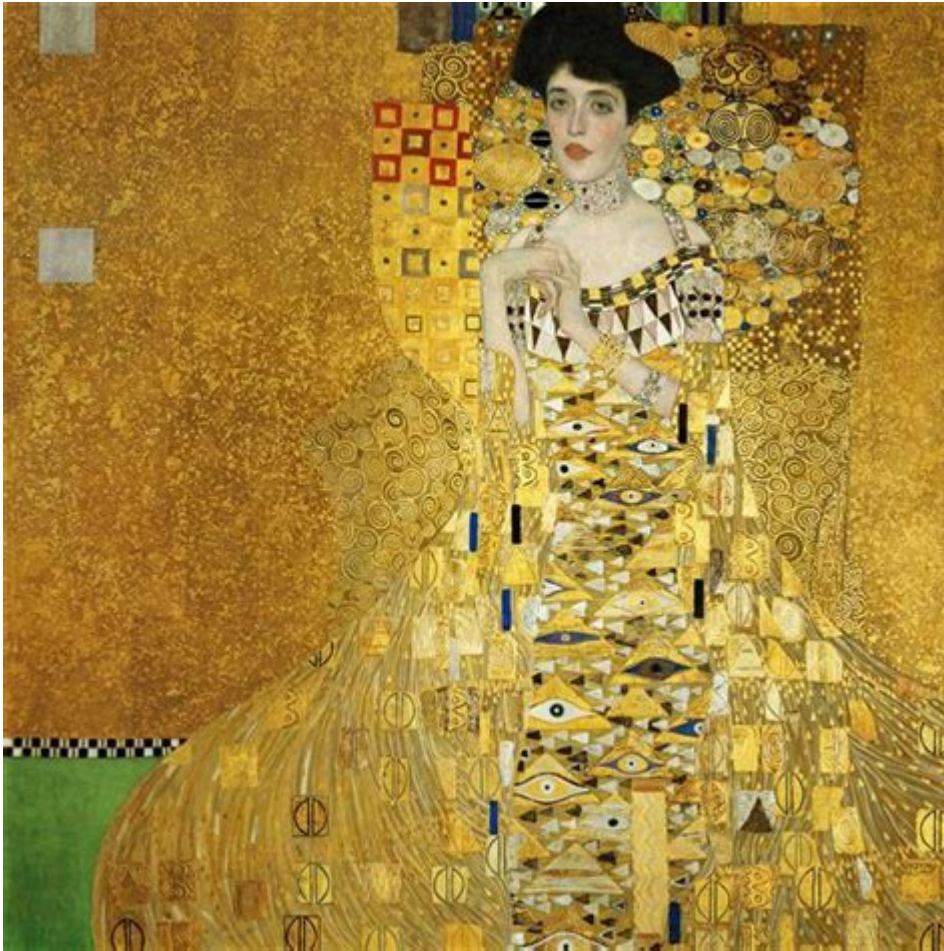


Gustav Klimt Portrait Of Adele Bloch Bauer I



Gustav Klimt's Portrait of Adele Bloch-Bauer I is one of the most iconic works of art from the early 20th century, blending the opulence of the Viennese Art Nouveau movement with a deep emotional intensity. Created between 1903 and 1907, this portrait not only captures the likeness of its subject, Adele Bloch-Bauer, but also serves as a representation of the cultural milieu of early 20th-century Vienna. Klimt's masterful use of gold leaf, intricate patterns, and symbolic elements have made this painting a symbol of beauty and elegance, as well as a subject of controversy and intrigue.

Historical Context

The Viennese Secession Movement

To fully appreciate Klimt's Portrait of Adele Bloch-Bauer I, it is essential to understand the historical and cultural context in which it was created. The late 19th and early 20th centuries saw the rise of the Viennese

Secession, an artistic movement that sought to break away from traditional academic art. Founded in 1897 by Klimt and other artists, the Secession was characterized by its embrace of modernity, experimentation, and a focus on personal expression.

Key aspects of the movement included:

- Rejection of Traditional Styles: Artists sought to challenge conventional forms and subjects, looking toward new techniques and materials.
- Focus on Symbolism: The use of symbolic imagery became prominent, often infused with themes of love, death, and the human condition.
- Integration of Various Art Forms: The Secessionists aimed to create a total work of art, blending painting, architecture, and decorative arts.

Adele Bloch-Bauer: The Muse

Adele Bloch-Bauer, the subject of Klimt's portrait, was a prominent figure in Vienna's cultural and social circles. Born in 1881 to a wealthy Jewish family, she married industrialist Ferdinand Bloch-Bauer, which positioned her within the elite of Viennese society. Adele was not just a patron of the arts; she was also known for her intellectual engagement and her role in the vibrant cultural life of Vienna.

Adele's relationship with Klimt went beyond that of artist and muse. They shared a deep mutual respect and admiration, which is evident in the portrait's intimate yet complex portrayal. Klimt's depiction of her combines both admiration and an exploration of her identity, making the painting a personal as well as a public statement.

The Artistic Techniques and Style

Use of Gold Leaf

One of the most striking features of Klimt's Portrait of Adele Bloch-Bauer I is the extensive use of gold leaf. Klimt was known for incorporating gold into his works, which not only added a sense of luxury but also drew on Byzantine art influences. The gold background creates a sense of timelessness and ethereality, effectively elevating the subject's status to that of an icon.

- Symbolism of Gold: Gold can be interpreted as a symbol of both wealth and spirituality. In this portrait, it creates a halo effect around Adele, suggesting her elevated social and cultural status.
- Textural Variety: The gold leaf contrasts with the intricate patterns and textures found in Adele's dress, emphasizing her elegance and individuality.

Patterns and Decoration

Klimt was renowned for his elaborate decorative style, and this portrait is no exception. The background is adorned with intricate swirls and motifs that add depth and complexity to the composition. The patterns serve several purposes:

1. Visual Interest: They draw the viewer's eye and create a dynamic visual experience.
2. Symbolic Layers: The motifs can be seen as representing different aspects of Adele's personality and life.
3. Integration with the Subject: The patterns blend with Adele's attire, creating harmony between the figure and the background.

Color Palette and Composition

Klimt's color palette in this portrait is rich yet restrained, dominated by warm golds, soft whites, and hints of deep orange and green. The use of color serves to highlight Adele's figure while also creating a sense of depth. The composition itself is masterfully balanced, with Adele positioned centrally and confidently, her gaze directed outward, inviting engagement from the viewer.

- Contrast: The warm colors of Adele's dress contrast with the cooler gold tones in the background, enhancing her presence.
- Pose: Adele's posture and expression project strength and poise, reflecting her social standing and the artist's admiration.

The Legacy of the Portrait

Art and Cultural Impact

Klimt's Portrait of Adele Bloch-Bauer I gained significant recognition not only for its artistic merit but also for its cultural implications. The painting represents the intersection of art, identity, and the complexities of early 20th-century Vienna. It has become emblematic of the Secessionist movement and is often studied for its innovative techniques and emotional depth.

- Influence on Modern Art: Klimt's work paved the way for future artists to explore symbolism, abstraction, and the use of non-traditional materials.
- Feminist Interpretations: The painting has also been re-evaluated through feminist lenses, examining the representation of women in art and the dynamics of the artist-muse relationship.

Controversies and Legal Battles

The portrait is not just a masterpiece; it is also steeped in controversy. After the annexation of Austria by Nazi Germany, the Bloch-Bauer family fled the country, leaving behind their art collection, including Klimt's portrait. The painting was eventually seized by the Nazis and transferred to the Austrian state.

In the late 20th century, the portrait became the center of a high-profile legal battle involving the Bloch-Bauer heirs, who sought restitution for the painting. The case culminated in a landmark decision in 2006, which led to the return of the painting to the family.

Current Status and Exhibition

Today, Portrait of Adele Bloch-Bauer I is housed in the Neue Galerie in New York City, where it is part of a permanent collection dedicated to early 20th-century Austrian art. The painting continues to draw crowds and remains a focal point for discussions around Klimt's work, the impact of the Viennese Secession, and the broader themes of art and identity.

- Public Engagement: The portrait's allure ensures that it remains a subject of fascination for both art lovers and scholars alike.
- Cultural Significance: It serves as a reminder of the historical complexities surrounding art ownership and cultural heritage.

Conclusion

Gustav Klimt's Portrait of Adele Bloch-Bauer I stands as a testament to the artistic innovation of the early 20th century, the cultural vibrancy of Vienna, and the intricate relationship between artist and muse. Its combination of opulent materials, intricate patterns, and emotional depth not only defines Klimt's style but also captures the spirit of an era. The portrait's legacy, marked by its artistic significance and the controversies surrounding its history, ensures that it remains a poignant symbol of beauty, identity, and the complexities of cultural heritage. As it continues to inspire and provoke discussion, Klimt's masterpiece endures as a timeless icon in the world of art.

Frequently Asked Questions

Who is the subject of Gustav Klimt's 'Portrait of Adele Bloch-Bauer I'?

The subject of the painting is Adele Bloch-Bauer, a prominent Viennese socialite and patron of the arts.

What year was 'Portrait of Adele Bloch-Bauer I' completed?

'Portrait of Adele Bloch-Bauer I' was completed in 1907.

What artistic movement is Gustav Klimt associated with?

Gustav Klimt is associated with the Symbolism and Art Nouveau movements.

What materials did Klimt use in 'Portrait of Adele Bloch-Bauer I'?

Klimt used oil on canvas, along with gold leaf, which is a signature element of his work.

What are the main themes depicted in 'Portrait of Adele Bloch-Bauer I'?

The painting explores themes of femininity, beauty, and the interplay of ornamentation and identity.

How did 'Portrait of Adele Bloch-Bauer I' become a significant art piece in recent history?

The painting gained significant attention after a lengthy legal battle over its ownership, culminating in its return to the Bloch-Bauer heirs in 2006.

Where is 'Portrait of Adele Bloch-Bauer I' currently housed?

Currently, 'Portrait of Adele Bloch-Bauer I' is housed in the Neue Galerie in New York City.

What is the significance of the gold leaf in 'Portrait of Adele Bloch-Bauer I'?

The gold leaf in the painting enhances its opulence and reflects Klimt's fascination with Byzantine art and decorative patterns.

Find other PDF article:

Gustav Klimt Portrait Of Adele Bloch Bauer I

GustavDev error : r/BaldursGate3 - Reddit

Sep 2, 2023 · I was having the same problem, I even uninstalled all mods, used vortex to purge any mod files, disconnected vortex from bg3, disconnected steam cloud saving, deleted all my ...

GustavDev mod file mismatch when trying to play multiplayer : r ...

Aug 3, 2023 · A community all about Baldur's Gate III, the role-playing video game by Larian Studios. BG3 is the third main game in the Baldur's Gate series. Baldur's Gate III is based on ...

GustavDev different mod version error : r/BaldursGate3 - Reddit

Jan 10, 2024 · A community all about Baldur's Gate III, the role-playing video game by Larian Studios. BG3 is the third main game in the Baldur's Gate series. Baldur's Gate III is based on ...

What are these GustavDev files : r/BaldursGate3 - Reddit

Apr 8, 2024 · Do not remove GustavDev. I can't claim to know how all the files make up the game, but my general understanding is that Gustav acts like the base game for the early access ...

Looking for all instances where Gustav Holst: the Planets - Reddit

Hello, very odd post, but I am trying to make a list of all the times The Planets, Op. 32: 4. Jupiter, the Bringer of Jollity - Gustav Holst, was used in other medias. This includes shows, movies, ...

Fix for GustavDev Error when playing Multiplayer with Mods - Reddit

Aug 30, 2023 · A community all about Baldur's Gate III, the role-playing video game by Larian Studios. BG3 is the third main game in the Baldur's Gate series. Baldur's Gate III is based on ...

GustavDev version doesn't match server's : r/BaldursGate3 - Reddit

A friend of mine tried to connect to my game (modded). Couldn't connect so we looked at the network log and it said that the version of GustavDev doesn't match the server's. This attempt ...

Did John Williams use Gustav Holst's 1918 "The Planets" to

Mar 16, 2021 · I don't know. I do know he was influenced by Erich Wolfgang Korngold, an Austrian-American composer active in the Golden Age of Hollywood. In addition to Erroll Flynn ...

Gustav dependency error fix, online vanilla after mods. - Reddit

Apr 26, 2024 · Earlier this week I wanted to play vanilla with a few friends and could not join their server because of Gustav dependency mismatch. After scouring the internet for hours and re ...

Carl Gustav Fulton - Peace Walker : r/metalgearsolid - Reddit

Feb 2, 2013 · Complete Extra Ops 098 according to the wiki. Oh and also what isn't mention is that you might have to go through the long winded process of unlocking other missions prior to ...

GustavDev error : r/BaldursGate3 - Reddit

Sep 2, 2023 · I was having the same problem, I even uninstalled all mods, used vortex to purge any

mod files, ...

GustavDev mod file mismatch when trying to play multiplayer ...

Aug 3, 2023 · A community all about Baldur's Gate III, the role-playing video game by Larian Studios. BG3 is the ...

GustavDev different mod version error : r/BaldursGate3 - Reddit

Jan 10, 2024 · A community all about Baldur's Gate III, the role-playing video game by Larian Studios. BG3 is the ...

What are these GustavDev files : r/BaldursGate3 - Reddit

Apr 8, 2024 · Do not remove GustavDev. I can't claim to know how all the files make up the game, but my general ...

Looking for all instances where Gustav Holst: the Planets - Reddit

Hello, very odd post, but I am trying to make a list of all the times The Planets, Op. 32: 4. Jupiter, the Bringer of Jollity - ...

Explore the beauty of Gustav Klimt's "Portrait of Adele Bloch-Bauer I." Discover its history

[Back to Home](#)