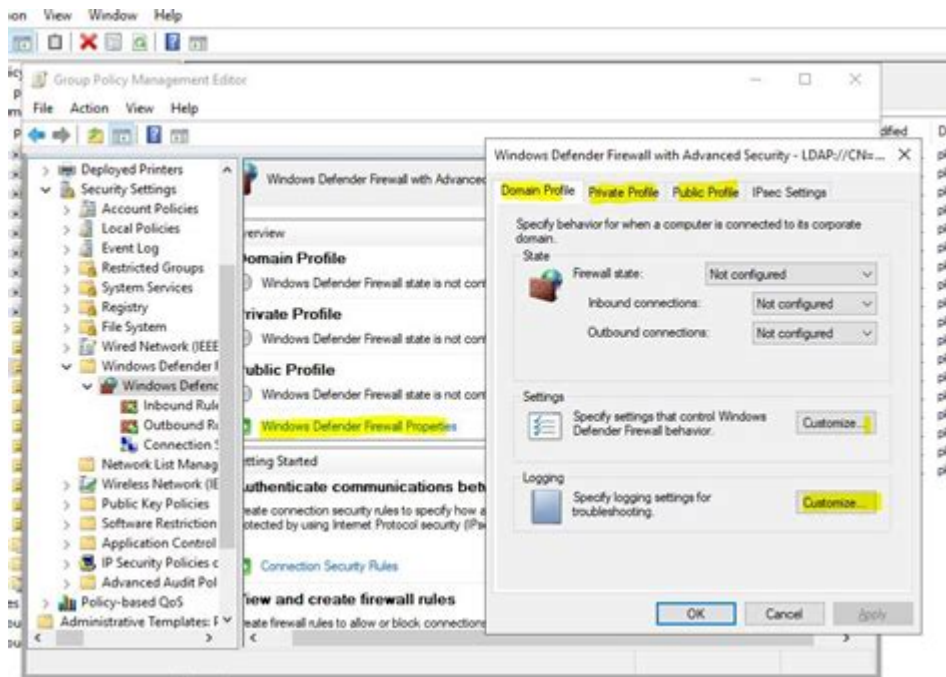


Group Policy Management Console



Group Policy Management Console (GPMC) is a powerful tool within the Windows Server environment that enables administrators to manage Group Policy Objects (GPOs) effectively. By providing a centralized interface for creating, editing, and linking GPOs, GPMC simplifies the management of user and computer configurations across an organization. This article will delve into the functionality of GPMC, its components, best practices for use, and its role in enhancing security and compliance within an enterprise.

Understanding Group Policy

Group Policy is a feature of Microsoft Windows that allows for centralized management and configuration of operating systems, applications, and user settings. It plays a crucial role in IT environments by automating administrative tasks and enforcing security policies. Group Policy operates through a structured hierarchy of objects that can be linked to sites, domains, or organizational units (OUs).

Components of Group Policy

1. **Group Policy Objects (GPOs):** These are collections of settings that control the working environment of user and computer accounts. GPOs can be created, edited, and linked to specific OUs or domains.
2. **Active Directory (AD):** Group Policy works in conjunction with Active

Directory to apply policies to users and computers. AD stores information about network resources and provides the necessary framework for policy application.

3. Group Policy Containers (GPCs): Each GPO has a corresponding GPC that is stored in AD. This contains metadata about the GPO, such as its version and status.

4. Group Policy Template (GPT): This is a file system-based component of a GPO that contains the actual policy settings. The GPT is stored in the SYSVOL directory on domain controllers.

Features of the Group Policy Management Console

The Group Policy Management Console is designed to provide a user-friendly interface for managing GPOs. Some of its key features include:

- Tree View Structure: GPMC displays a hierarchical view of the forest, domains, and OUs, allowing administrators to navigate and manage GPOs efficiently.
- GPO Creation and Editing: Administrators can create new GPOs or edit existing ones directly within the console, providing a seamless experience for policy management.
- Linking GPOs: GPMC allows for the linking of GPOs to specific OUs or domains, thereby controlling where and how policies are applied.
- Reporting Capabilities: GPMC includes built-in reporting tools that allow administrators to generate reports on GPO settings, inheritance, and conflicts, aiding in troubleshooting and documentation.
- Delegation of Control: Administrators can delegate permissions to other users or groups for managing GPOs, ensuring that policy management can be distributed within the organization.

How to Access the Group Policy Management Console

To access GPMC, follow these steps:

1. Install GPMC: If you are using a Windows Server version that does not have GPMC installed by default, you may need to install it via the Server Manager.
2. Open GPMC: You can start GPMC by typing "gpmc.msc" in the Run dialog (Win + R) or by navigating through the Administrative Tools in the Control Panel.
3. Explore the Interface: Familiarize yourself with the console's layout,

including the navigation pane, details pane, and action pane.

Creating and Managing Group Policy Objects

Creating and managing GPOs within GPMC involves several key steps:

Creating a New GPO

1. In the GPMC console, right-click on the desired domain or OU where you want the GPO to be applied.
2. Select "Create a GPO in this domain, and Link it here."
3. Provide a name for the GPO and click "OK."

Editing a GPO

1. Right-click the GPO you wish to edit and select "Edit."
2. This will launch the Group Policy Management Editor, where you can configure settings under "Computer Configuration" and "User Configuration."

Linking a GPO

To link a GPO to an OU or domain:

1. Right-click the desired OU or domain in the GPMC console.
2. Select "Link an Existing GPO."
3. Choose the GPO from the list and click "OK."

Enforcing and Blocking Inheritance

GPMC allows administrators to enforce certain GPOs, ensuring they take precedence over conflicting policies. Additionally, inheritance can be blocked at the OU level, which can be useful in specific scenarios where unique configurations are required.

Best Practices for Group Policy Management

Effective management of Group Policies is critical for maintaining a secure and efficient IT environment. Here are some best practices to consider:

- **Limit the Number of GPOs:** While it may seem beneficial to create multiple GPOs for various settings, having too many can lead to complexity and management difficulties. Aim for a streamlined approach with fewer GPOs that cover broader policies.
- **Use Descriptive Names:** When creating GPOs, use clear and descriptive names to make it easier for administrators to understand their purpose at a glance.
- **Regularly Review GPOs:** Conduct periodic reviews of existing GPOs to identify any that are outdated or no longer necessary. This helps maintain an organized and efficient environment.
- **Document Changes:** Keep thorough documentation of GPO changes, including who made them and why. This can aid in troubleshooting and compliance audits.
- **Test Changes in a Lab Environment:** Before applying significant changes to production GPOs, test them in a controlled environment to avoid unexpected issues.

Security and Compliance with GPOs

The Group Policy Management Console plays a crucial role in enhancing security within an organization. By applying consistent security policies across all user and computer accounts, administrators can mitigate security risks effectively. Some key areas where GPOs contribute to security include:

- **Password Policies:** GPOs can enforce strong password requirements, such as complexity and expiration, to enhance account security.
- **Software Restriction Policies:** Administrators can use GPOs to limit or restrict the execution of unauthorized applications, helping to prevent malware infections.
- **User Rights Assignment:** GPOs can manage user permissions, ensuring that only authorized users have access to sensitive information and system configurations.

Compliance and Auditing

In addition to security, GPOs can help organizations meet compliance requirements for various regulations and standards. By implementing policies that enforce data protection, access controls, and auditing mechanisms, organizations can demonstrate adherence to industry regulations.

Conclusion

The Group Policy Management Console is an essential tool for Windows Server administrators, providing a structured approach to managing Group Policy Objects and enforcing organizational policies. By understanding its features, best practices, and implications for security and compliance, IT professionals can leverage GPMC to create a secure and efficient computing environment. Through effective use of GPOs, organizations can reduce administrative overhead, enhance security, and ensure compliance with regulatory standards, ultimately contributing to a more robust IT infrastructure.

Frequently Asked Questions

What is the Group Policy Management Console (GPMC)?

The Group Policy Management Console (GPMC) is a Microsoft Management Console (MMC) application that allows administrators to manage Group Policy Objects (GPOs) in Active Directory. It provides a unified interface for creating, editing, and linking GPOs to Active Directory containers.

How do you access the Group Policy Management Console?

You can access the GPMC by typing 'gpmc.msc' in the Run dialog (Win + R) or by navigating through Administrative Tools in the Control Panel on a Windows Server or a Windows client with the Remote Server Administration Tools (RSAT) installed.

What are the main features of the GPMC?

The main features of GPMC include the ability to create and manage GPOs, link GPOs to Active Directory containers, perform Group Policy Modeling and Results, and backup and restore GPOs.

What is Group Policy Modeling in GPMC?

Group Policy Modeling is a feature in GPMC that allows administrators to simulate the effect of GPOs on a user or computer in a specific organizational unit (OU). It helps predict how policies will be applied and troubleshoot potential issues.

Can GPMC be used to manage Group Policy in a mixed environment?

Yes, GPMC can manage Group Policy in a mixed environment, including domains running different versions of Windows Server, as long as the domain

functional level supports the features being used.

What is the purpose of the Group Policy Results Wizard in GPMC?

The Group Policy Results Wizard in GPMC provides a way to generate reports on the applied GPOs for a specific user or computer. It helps troubleshoot and verify which policies are in effect and which are not.

How can you back up and restore GPOs using GPMC?

In GPMC, you can back up GPOs by right-clicking on a GPO and selecting the 'Back Up' option. To restore a GPO, you can right-click on the 'Group Policy Objects' node and select 'Manage Backups' to choose a backup to restore.

Find other PDF article:

<https://soc.up.edu.ph/62-type/pdf?ID=LZH79-7610&title=think-up-math-level-5-answer-key.pdf>

Group Policy Management Console

Gpresult /H and GPMC settings view do not match RSOP.

Nov 7, 2024 · The GPMC (Group Policy Management Console) Settings tab may not show certain settings due to: Legacy templates or custom ADMX settings: Settings that don't follow standard ...

Group Policy to allow specific users to install specific software ...

Oct 23, 2023 · Group Policy to allow specific users to install specific software without admin privileges I am a newly system administrator for an organization and I am trying to create a Group ...

How to change Regional Settings for all users on a computer

Mar 16, 2019 · 1. Launch Group Policy Management Console (gmpc.msc) 2. Right click Default Domain Policy and select Edit to open Group Policy Management Editor 3. In Group Policy ...

Open Local Group Policy Editor in Windows 10 | Tutorials

Oct 11, 2022 · How to Open the Local Group Policy Editor in Windows 10 The Local Group Policy Editor (gpedit.msc) is a Microsoft Management Console (MMC) snap-in that provides a single ...

Installing GPMC on Windows Server 2008 and Windows Vista ...

Apr 4, 2019 · The Group Policy Management Console is included in Windows Server 2008; however, you must install it before you can use it. The domain controller promotion process installs GPMC ...

Windows Server 2012 - The New and Improved Group Policy ...

Sep 19, 2018 · In this post, I'll show you some things in the updated "Group Policy Management Console" (GPMC). Before I show off some of the coolness of the new GPMC, hop on the 'way ...

Is it possible to set up Group Policy Management Console in Win 10?

Jun 24, 2023 · Is it possible to set up Group Policy Management Console in Win 10? Just as the title says. I'm creating an organizational unit for a set of computers at work, controlled by Group ...

Intune vs Group Policy Management Console | Microsoft ...

Aug 25, 2022 · Intune vs Group Policy Management Console Hi, can someone explain me the differences between Intune and Group Policy Management Console (Gpmc.msc) on a simply ...

A Treatise on Group Policy Troubleshooting-now with GPSVC Log ...

Apr 22, 2025 · First published on TechNet on Apr 17, 2015 Hi all, David Ani here from Romania. This guide outlines basic steps used to troubleshoot Group Policy application errors using the Group ...

GPMC cant view RSoP if no User Policy settings is selected

May 23, 2023 · Hi all,we are facing a problem in the Group Policy Management Console (gpmc). When we run the Group Policy Result Wizard for a server without user policy...

Gpresult /H and GPMC settings view do not match RSOP.

Nov 7, 2024 · The GPMC (Group Policy Management Console) Settings tab may not show certain settings due to: Legacy templates or custom ADMX settings: Settings that don't follow standard reporting formats might not appear in GPMC. Replication delays or issues within the Active Directory domain that may cause discrepancies in what is shown in the GPMC. 4.

Group Policy to allow specific users to install specific software ...

Oct 23, 2023 · Group Policy to allow specific users to install specific software without admin privileges I am a newly system administrator for an organization and I am trying to create a Group Policy that will allow specific users to download and use certain software like LogMeIn123 without having to use admin privileges.

How to change Regional Settings for all users on a computer

Mar 16, 2019 · 1. Launch Group Policy Management Console (gpmc.msc) 2. Right click Default Domain Policy and select Edit to open Group Policy Management Editor 3. In Group Policy Management Editor, navigate to Computer Configuration > Preferences > Windows Settings > Registry: 4. Right Click on Registry > New > Collection Item 5. Give your collection a name 6.

Open Local Group Policy Editor in Windows 10 | Tutorials

Oct 11, 2022 · How to Open the Local Group Policy Editor in Windows 10 The Local Group Policy Editor (gpedit.msc) is a Microsoft Management Console (MMC) snap-in that provides a single user interface through which all the the Computer Configuration and User Configuration settings of Local Group Policy objects can be managed.

Installing GPMC on Windows Server 2008 and Windows Vista ...

Apr 4, 2019 · The Group Policy Management Console is included in Windows Server 2008; however, you must install it before you can use it. The domain controller promotion process installs GPMC on the server, in addition to adding the domain controller to the domain. Additionally, you can install GPMC on a member server as long as it's a member of the domain.

Windows Server 2012 - The New and Improved Group Policy ...

Sep 19, 2018 · In this post, I'll show you some things in the updated "Group Policy Management Console" (GPMC). Before I show off some of the coolness of the new GPMC, hop on the 'way-back' machine and recall the joys of GPO editing circa ...

Is it possible to set up Group Policy Management Console in Win ...

Jun 24, 2023 · Is it possible to set up Group Policy Management Console in Win 10? Just as the title says. I'm creating an organizational unit for a set of computers at work, controlled by Group Policy. Basically, I'm using a Windows 11 PC which is a dumb terminal to communicate with our server to make Group Policy modifications.

Intune vs Group Policy Management Console | Microsoft ...

Aug 25, 2022 · Intune vs Group Policy Management Console Hi, can someone explain me the differences between Intune and Group Policy Management Console (Gpmc.msc) on a simply level? I read that both can be used to manage update delivery....

A Treatise on Group Policy Troubleshooting-now with GPSVC ...

Apr 22, 2025 · First published on TechNet on Apr 17, 2015 Hi all, David Ani here from Romania. This guide outlines basic steps used to troubleshoot Group Policy application errors using the Group Policy Service Debug logs (gpsvc.log). A basic understanding of the logging discussed here will save time and may prevent you from having to open a support ticket with Microsoft. ...

GPMC cant view RSoP if no User Policy settings is selected

May 23, 2023 · Hi all,we are facing a problem in the Group Policy Management Console (gpmc). When we run the Group Policy Result Wizard for a server without user policy...

Master the Group Policy Management Console to streamline your network management. Discover how to optimize settings and enhance security today!

[Back to Home](#)